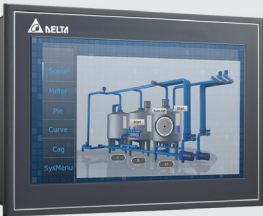


DOP-103WQ



DOP-107EG



DOP-110WS



DOP-W127B



DELTA-SW

DOP-100 series - HMI (Human Machine Interface) touch screens

Delta DOP-100 series HMI's provide various touch screens in multiple dimensions and colours providing fast, convenient control functions for industrial automation machines. DOP-100 series HMI's designed for Delta specific industrial automation products, can be combined with over 30 other brands and models of PLCs or controllers for effortless communication and versatile operation.

- Full 65,536-colour, enhanced resolution for more realistic images and colourful, vivid display
- RS-232/485/422, USB disk, Ethernet, SD card are supported for various applications
- High Flash and SDRAM memory 256 MB Flash ROM 256MB
- Multitone buzzer - frequency (2K - 4K Hz) / 80dB RAM 256MB (512MB hi performance)
- Supports SD memory card - Ethernet (certain models)
- Supports VNC for remote access



DOP-B - DOP-100 Transition document

type	display size	version	Ethernet	host ports SD/USB	description
DOP-103 (H) 103 x (W) 137 x (D) 31 mm panel cutout: 92.8 x 118.8 mm					
• Resolution: 480 x 272 pixels					
DOP-103BQ	4.3" (95 x 54)	standard	-	USB	2x COM ports
DOP-103WQ	4.3" (95 x 54)	hi performance	Yes	USB	2x COM ports
DOP-107 (H) 161 x (W) 215 x (D) 51.2 mm panel cutout: 142.9 x 196.9 mm					
• Resolution: 800 x 480 pixels					
DOP-107BV	7" (154 x 86)	basic	-	USB	2x COM ports
DOP-107EV	7" (154 x 86)	standard	Yes	SD/USB	3x COM ports
Squared version (H) 144 x (W) 184 x (D) 51.1 mm panel cutout: 132.4 x 172.4 mm					
DOP-107EG*	7" (141 x 106)	standard	Yes	SD/USB	3x COM ports
Narrow border (H) 136 x (W) 196 x (D) 32 mm panel cutout: 126.8 x 186.8 mm					
DOP-107WW	7" (154 x 86)	hi performance	Yes	SD/USB	3x COM ports
DOP-110 (H) 200 x (W) 272 x (D) 51.9 mm panel cutout: 189.3 x 261.3 mm					
• Resolution: 1024 x 600 pixels					
DOP-110CS	10" (226 x 128)	standard	-	-	3x COM ports
DOP-110IS*	10" (226 x 128)	standard	Yes	SD/USB	3x COM ports
Narrow border (H) 180 x (W) 270 x (D) 47.75 mm panel cutout: 170.5 x 255.5 mm					
DOP-110WS	10" (225 x 128)	hi performance	Yes	SD/USB	3x COM ports

DOP100-MX Multi-media type

DOP100-MX series adopts a "narrow frame", wide screen design with advanced communication capabilities (multilingual inputs) and enhanced multi-media functions to meet different applications.

- 1024 x 768 pixel 8GB ROM
- 1G RAM DDR3 1000Mhz
- Colour- 24bit
- Dual core 1GHz speed processor for higher computing performance
- Multi-media functions: Camera (analog / IP), video playback, VGA input, event trigger
- Multiple Interfaces: 4 COM ports, 2 Ethernet ports, 1 Mini USB Mini Slave 2.0, 1 USB Host 2.0

12-inch (H) 317.4 x (W) 246.4 x (D) 52.7 mm panel cutout: 302.7 x 228.7 mm					
DOP-112MX	12"(245 x 184)	advanced	Yes	SD/USB	4 x COM ports
15-inch (H) 387.7 x (W) 295.7 x (D) 63.5 mm panel cutout: 372.4 x 283.7 mm					
DOP-115MX	15" (304 x 228)	advanced	Yes	SD/USB	4 x COM ports

DOP-W Large size HMI's

The DOP-W series offers large-size HMI's with high resolution and high brightness touch screens the ultimate in industrial versatility.

- Multiple Interfaces: 2 COM ports, 2 Ethernet ports, 3 USB Host 2.0 ports, SD card

12-inch (H) 313 x (W) 239.5 x (D) 67.5 mm panel cutout: 302.7 x 228.7mm					
DOP-W127B*	12"(245 x 184)	advanced	Yes	SD/USB	2 x COM ports
15-inch (H) 384.4 x (W) 295.8 x (D) 67.8 mm panel cutout: 372.4 x 283.7 mm					
DOP-W157B*	15" (304 x 228)	advanced	Yes	SD/USB	2 x COM ports

* Incorporates audio stereo output

Accessories for above HMI's

DELTA-SW editing/design software for DOP/TP series HMI's

New upgraded configuration software provides complete functions in a very user-friendly operator interface

Note: For HMI's cables, see C-14