



LPC S120



LPC S230



LPC S320



LPC R1196



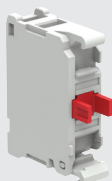
LPC ZS...



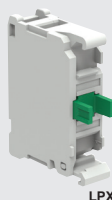
LPC D01



LPX AU120



LPX C01



LPX C10

Platinum series Ø22 mm pushbuttons and selector switches

- IP66 - IP67 - IP69K degree of protection for use in even in extreme temperatures -25° to +70°C
- Actuators supplied without **LPX AU120** contact block and support (*to be ordered separately*)

type	colour	positions		description	spring return
------	--------	-----------	--	-------------	---------------

Selector switch actuators

LPC S120	black	2 position	O - I	selector switch actuator	-
LPC S121	black	2 position	O - I	selector switch actuator	from Right
LPC S130	black	3 position	I - O - II	selector switch actuator	I - O - II
LPC S131	black	3 position	I - O - II	selector switch actuator	from L+R
LPC S132	black	3 position	I - O - II	selector switch actuator	from Left
LPC S133	black	3 position	I - O - II	selector switch actuator	from Right

Lever selector switch actuators

LPC S220	black	2 position	O - I	lever selector actuator	O - I
LPC S221	black	2 position	O - I	lever selector actuator	from Right
LPC S230	black	3 position	I - O - II	lever selector actuator	I - O - II
LPC S231	black	3 position	I - O - II	lever selector actuator	from L+R
LPC S232	black	3 position	I - O - II	lever selector actuator	from Left
LPC S233	black	3 position	I - O - II	lever selector actuator	from Right

Key selector switch actuators

type	colour	positions	key remove	description	spring return
------	--------	-----------	------------	-------------	---------------

LPC S320	black	2 pos (O-I)	Left	key switch actuator	-
LPC S321	black	2 pos (O-I)	L+R	key switch actuator	-
LPC S340	black	2 pos (O-I)	Left	key switch actuator	from Right
LPC S330	black	3 pos (I-O-II)	Centre	key switch actuator	-
LPC S331	black	3 pos (I-O-II)	L+C+R	key switch actuator	-
LPC S332	black	3 pos (I-O-II)	Left	key switch actuator	-
LPC S333	black	3 pos (I-O-II)	Right	key switch actuator	-
LPC S360	black	3 pos (I-O-II)	Centre	key switch actuator	from Right
LPC S370	black	3 pos (I-O-II)	Centre	key switch actuator	from L+R

Mechanical reset pushbuttons (*fine depth adjustment from face of button*)

LPC R1002	black	-		mechanical reset button (<i>adj. length</i>)	0-150 mm
LPC R1004	red	-		mechanical reset button (<i>adj. length</i>)	0-150 mm
LPC R1006	blue	-		mechanical reset button (<i>adj. length</i>)	0-150 mm
LPC R1196	blue	(RESET)		mechanical reset button (<i>adj. length</i>)	0-150 mm

Pulse-tone monoblock buzzer Ø22 mm *continuous or pulse tone (10 cm)*

LPC ZSB	black	18 - 30 VAC/DC	(IP40)	panel mount acoustic buzzer	90dB
LPC ZSM	black	185 - 265 VAC	(IP40)	panel mount acoustic buzzer	90dB
LPC ZSMIP	black	185 - 265 VAC	(IP65)	panel mount acoustic buzzer	80dB

USB and RJ45 communication interfaces Ø22 mm *IP65 (with cap closed)*

LPC D01	black	USB		panel mnt communication interface	A-A
LPC D03	black	USB		panel mnt communication interface	A-B
LPC D06	black	RJ45		panel mnt communication interface	Ethernet

Contact blocks and support for control devices

Contact block support max. of 9 contact blocks (3 rows of 3) - *actuator dependant*

LPX AU120 support contact block support / mounting adaptor for 3 contact blocks

Contact blocks *requires LPX AU120 (above) to mount onto actuators*

- Self cleaning, dual scrape/oscillating action contacts
- IEC rated insulation voltage: 690V - thermal current Ith: 10A
- Can be clipped onto the back of another contact block

LPX C10	1 x NO	standard	green	screw term. contact block for control devices
LPX C01	1 x NC	standard	red	screw term. contact block for control devices
LPX C10A	1 x NO	early make	green	screw term. contact block for control devices
LPX C01D	1 x NC	late break	red	screw term. contact block for control devices

- Push-in technology for rigid cables or with ferrules (*no screw driver required for insertion*) guaranteed retaining force over time even in presence of vibration and/or impact

LPX CS10	1 x NO	standard		push-in term. contact block for control devices
LPX CS01	1 x NC	standard		push-in term. contact block for control devices