



WSK 40



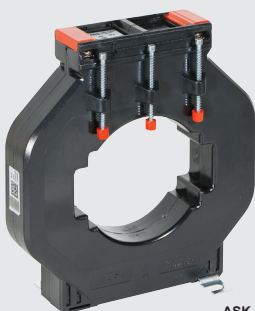
SUSK 4



ASK 41.4



ASK 61.4



ASK 103.3

type	ratio	class	Burden (VA)	description	dimensions (mm)					
					(H)	(W)	(D)			
<b>Primary wound current transformers 5A secondary - class 1</b>										
<b>WSK 30 primary wound current transformers</b>										
30022	5/5A	1	5	wound current transformer	79	61	35			
30024	10/5A	1	5	wound current transformer	79	61	35			
30026	15/5A	1	5	wound current transformer	79	61	35			
30028	20/5A	1	5	wound current transformer	79	61	35			
<b>WSK 40 primary wound current transformers</b>										
31070	25/5A	1	10	wound current transformer	89	71	45			
31074	30/5A	1	10	wound current transformer	89	71	45			
<b>Summation current transformers 5A secondary - class 1</b>										
<b>KSU 2/3 summation current transformers</b>										
41015	5+5/5A	1	10	summation transformer	94	127	57			
41031	5+5+5/5A	1	10	summation transformer	94	127	57			
<b>SUSK 4 summation current transformers</b>										
40027	5+5+5+5/5A	1	10	summation transformer	137	156	65			
<b>1A secondary - class 1 Busbar mounted current transformers</b>										
type	ratio	class	Burden (VA)	description	max. hole diameter (mm)					
					round	B/bar 1	B/bar 2			
<b>ASK 41.4 current transformers (H) 85.5 x (W) 71 x (D) 58 mm</b>										
13239	75/1A	1	1.5	std current transformer	Ø32	40x10	30x15			
13244	100/1A	1	2.5	std current transformer						
13248	150/1A	1	5	std current transformer						
13250	200/1A	1	5	std current transformer						
13254	250/1A	1	10	std current transformer						
13257	300/1A	1	10	std current transformer						
13262	400/1A	1	15	std current transformer						
13266	500/1A	1	15	std current transformer						
13270	600/1A	1	15	std current transformer						
13273	750/1A	1	15	std current transformer						
13277	800/1A	1	15	std current transformer						
<b>ASK 51.4 current transformers (H) 85.5 x (W) 71 x (D) 58 mm</b>										
16260	500/1A	1	15	std current transformer				Ø44	50x10	40x30
16264	600/1A	1	15	std current transformer						
16268	750/1A	1	15	std current transformer						
16271	800/1A	1	15	std current transformer						
16275	1000/1A	1	15	std current transformer						
<b>ASK 61.4 current transformers (H) 105.5 x (W) 96 x (D) 58 mm</b>										
19265	600/1A	1	15	std current transformer	Ø44	60x10	50x30			
19269	750/1A	1	15	std current transformer						
19273	800/1A	1	15	std current transformer						
19285	1250/1A	1	30	std current transformer						
<b>ASK 81.4 current transformers (H) 123.5 x (W) 120 x (D) 58 mm</b>										
21253	800/1A	1	15	std current transformer	Ø55	80x10	60x30			
21256	1000/1A	1	15	std current transformer						
21264	1250/1A	1	15	std current transformer						
21272	1600/1A	1	30	std current transformer						
<b>ASK 103.3 current transformers (H) 185 x (W) 172 x (D) 52 mm</b>										
23251	1250/1A	1	30	std current transformer	Ø85	100x30	80x50			
23258	1600/1A	1	30	std current transformer						
23262	2000/1A	1	30	std current transformer						
23266	2500/1A	1	30	std current transformer						
23270	3000/1A	1	30	std current transformer						