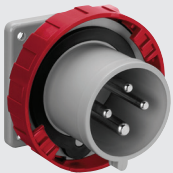




243.639...



248.329...



240.639...T



570.90164

type	rated current	(h) pos.	pin configuration	IP protection 44/54 66/7/9	description	flange size
continued... Connectors/couplers (female in-line socket)						
318.12543	125A	6h	2P+E (3pin)	●	female connector	straight
318.12546	125A	6h	3P+E (4pin)	●	female connector	straight
318.125466	125A	7h	3P+E (4pin)	●	female connector	straight
318.12547	125A	6h	3P+N+E (5pin)	●	female connector	straight
318.125476	125A	7h	3P+N+E (5pin)	●	female connector	straight
Optima series - Appliance inlets (male pins - accept female connector)						
Flush mount appliance inlet (straight inlet)						
243.1693	16A	6h	2P+E (3pin)	●	flush mnt appliance inlet	75 x 75
243.1696	16A	6h	3P+E (4pin)	●	flush mnt appliance inlet	75 x 75
243.1697	16A	6h	3P+N+E (5pin)	●	flush mnt appliance inlet	75 x 75
243.3293	32A	6h	2P+E (3pin)	●	flush mnt appliance inlet	75 x 75
243.3296	32A	6h	3P+E (4pin)	●	flush mnt appliance inlet	75 x 75
243.3297	32A	6h	3P+N+E (5pin)	●	flush mnt appliance inlet	75 x 75
243.6393	63A	6h	2P+E (3pin)	●	flush mnt appliance inlet	100 x 110
243.6396	63A	6h	3P+E (4pin)	●	flush mnt appliance inlet	100 x 110
243.6397	63A	6h	3P+N+E (5pin)	●	flush mnt appliance inlet	100 x 110
248.1693	16A	6h	2P+E (3pin)	●	flush mnt appliance inlet	75 x 75
248.1696	16A	6h	3P+E (4pin)	●	flush mnt appliance inlet	75 x 75
248.16966	16A	7h	3P+E (4pin)	●	flush mnt appliance inlet	75 x 75
248.1697	16A	6h	3P+N+E (5pin)	●	flush mnt appliance inlet	75 x 75
248.16976	16A	7h	3P+N+E (5pin)	●	flush mnt appliance inlet	75 x 75
248.3293	32A	6h	2P+E (3pin)	●	flush mnt appliance inlet	75 x 75
248.3296	32A	6h	3P+E (4pin)	●	flush mnt appliance inlet	75 x 75
248.32966	32A	7h	3P+E (4pin)	●	flush mnt appliance inlet	75 x 75
248.3297	32A	6h	3P+N+E (5pin)	●	flush mnt appliance inlet	75 x 75
248.32976	32A	7h	3P+N+E (5pin)	●	flush mnt appliance inlet	75 x 75
248.6393	63A	6h	2P+E (3pin)	●	flush mnt appliance inlet	100 x 110
248.6396	63A	6h	3P+E (4pin)	●	flush mnt appliance inlet	100 x 110
248.63966	63A	7h	3P+E (4pin)	●	flush mnt appliance inlet	100 x 110
248.6397	63A	6h	3P+N+E (5pin)	●	flush mnt appliance inlet	100 x 110
248.63976	63A	7h	3P+N+E (5pin)	●	flush mnt appliance inlet	100 x 110
248.12593	125A	6h	2P+E (3pin)	●	flush mnt appliance inlet	114 x 114
248.12596	125A	6h	3P+E (4pin)	●	flush mnt appliance inlet	114 x 114
248.125966	125A	7h	3P+E (4pin)	●	flush mnt appliance inlet	114 x 114
248.12597	125A	6h	3P+N+E (5pin)	●	flush mnt appliance inlet	114 x 114
248.125976	125A	7h	3P+N+E (5pin)	●	flush mnt appliance inlet	114 x 114
Surface mount appliance inlet (angled inlet) cable entry						
240.1693	16A	6h	2P+E (3pin)	●	surf mnt appliance inlet	M25
240.1696	16A	6h	3P+E (4pin)	●	surf mnt appliance inlet	M25
240.1697	16A	6h	3P+N+E (5pin)	●	surf mnt appliance inlet	M25
240.3293	32A	6h	2P+E (3pin)	●	surf mnt appliance inlet	M32
240.3296	32A	6h	3P+E (4pin)	●	surf mnt appliance inlet	M32
240.3297	32A	6h	3P+N+E (5pin)	●	surf mnt appliance inlet	M32
240.6393T	63A	6h	2P+E (3pin)	●	surf mnt appliance inlet	M40
240.6396T	63A	6h	3P+E (4pin)	●	surf mnt appliance inlet	M40
240.6397T	63A	6h	3P+N+E (5pin)	●	surf mnt appliance inlet	M40
245.1693	16A	6h	2P+E (3pin)	●	surf mnt appliance inlet	M25
245.1696	16A	6h	3P+E (4pin)	●	surf mnt appliance inlet	M25
245.1697	16A	6h	3P+N+E (5pin)	●	surf mnt appliance inlet	M25
245.3293	32A	6h	2P+E (3pin)	●	surf mnt appliance inlet	M32
245.3296	32A	6h	3P+E (4pin)	●	surf mnt appliance inlet	M32
245.3297	32A	6h	3P+N+E (5pin)	●	surf mnt appliance inlet	M32
245.6393T	63A	6h	2P+E (3pin)	●	surf mnt appliance inlet	M40
245.6396T	63A	6h	3P+E (4pin)	●	surf mnt appliance inlet	M40
245.6397T	63A	6h	3P+N+E (5pin)	●	surf mnt appliance inlet	M40
245.12597T	125A	6h	3P+N+E (5pin)	●	surf mnt appliance inlet	M63
Protection caps for plugs and appliance inlets IP66/IP67/IP69						
570.90163	16A	-	2P+E	●	covers for plugs and inlets	
570.90164	16A	-	3P+E	●	covers for plugs and inlets	
570.90165	16A	-	3P+N+E	●	covers for plugs and inlets	
570.90324	32A	-	2/3P+E	●	covers for plugs and inlets	
570.90325	32A	-	3P+N+E	●	covers for plugs and inlets	
570.9063	63A	-	all configurations	●	covers for plugs and inlets	
570.9125	125A	-	all configurations	●	covers for plugs and inlets	