



electrahertz
electrical suppliers (Pty) Ltd



KuMax (1000 V / 1500 V)

SUPER HIGH EFFICIENCY POLY^{GEN4} MODULE

CS3U-345|350|355|360P

Introducing Solar Panels with industry leading black silicon cell technology and the innovative LIC (Low Internal Current) module technology. The poly modules supply up to 360 W.

The KuMax poly modules with a dimension of 2000 × 992 mm, close to our 72 cell MaxPower modules, have the following unique features:

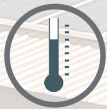
- Higher power classes for equivalent module sizes
- High module efficiency up to 18.15 %
- LOW hot spot temperature risk
- LOW temperature coefficient (Pmax): -0.38 % / °C
- LOW NMOT (Nominal Module Operating Temperature): 43 ± 2 °C



More power output thanks to
low NMOT: 43 ± 2 °C



Low power loss in cell
connection



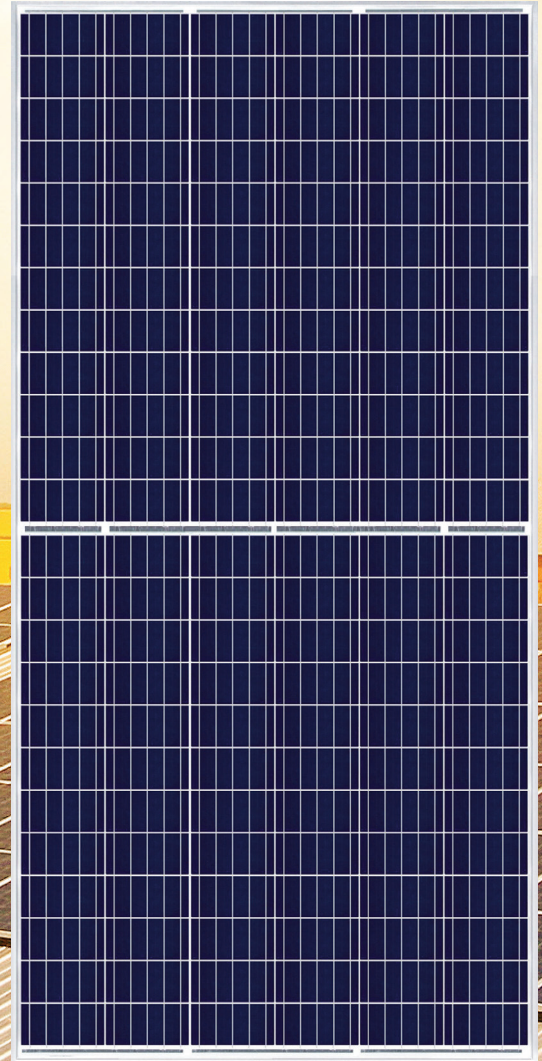
Safer: lower hot spot
temperature



Heavy snow load up to 5400 Pa,
wind load up to 2400 Pa



Low BoS cost with 1500
V_{DC} system voltage



linear power output warranty



product warranty on materials
and workmanship

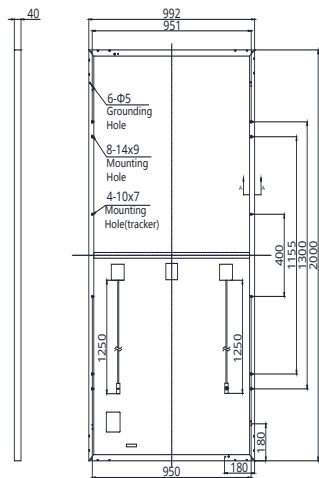
PRODUCT CERTIFICATES*

IEC 61215 / IEC 61730: 2005 & 2016: VDE / CE / UL 1703: CSA

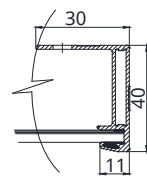


ENGINEERING DRAWING (mm)

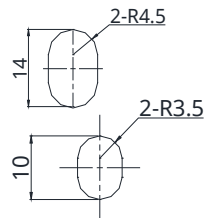
Rear View



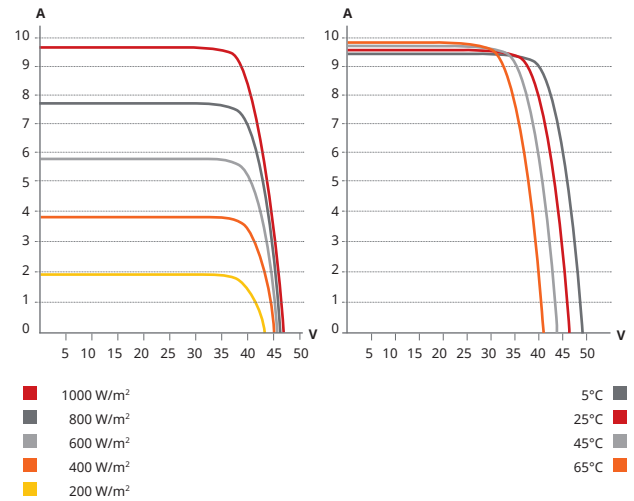
Frame Cross Section A-A



Mounting Hole



CS3U-355P / I-V CURVES



ELECTRICAL DATA | STC*

CS3U	345P	350P	355P	360P
Nominal Max. Power (P _{max})	345 W	350 W	355 W	360 W
Opt. Operating Voltage (V _{mp})	39.0 V	39.2 V	39.4 V	39.6 V
Opt. Operating Current (I _{mp})	8.86 A	8.94 A	9.02 A	9.10 A
Open Circuit Voltage (V _{oc})	46.4 V	46.6 V	46.8 V	47.0 V
Short Circuit Current (I _{sc})	9.43 A	9.51 A	9.59 A	9.67 A
Module Efficiency	17.39%	17.64%	17.89%	18.15%
Operating Temperature	-40°C ~ +85°C			
Max. System Voltage	1000 V (IEC / UL) or 1500 V (IEC / UL)			
Module Fire Performance	TYPE 1 (UL 1703) or CLASS C (IEC 61730)			
Max. Series Fuse Rating	30 A			
Application Classification	Class A			
Power Tolerance	0 ~ + 5 W			

* Under Standard Test Conditions (STC) of irradiance of 1000 W/m², spectrum AM 1.5 and cell temperature of 25°C.

MECHANICAL DATA

Specification	Data
Cell Type	Poly-crystalline, 156.75 × 78.38 mm
Cell Arrangement	144 [2 × (12 × 6)]
Dimensions	2000 × 992 × 40 mm (78.7 × 39.1 × 1.57 in)
Weight	22.6 kg (49.8 lbs)
Front Cover	3.2 mm tempered glass
Frame	Anodized aluminium alloy, crossbar enhanced
J-Box	IP68, 3 diodes
Cable	4.0 mm ² & 12 AWG
Cable Length	1670 mm (65.7 in)
Connector	T4 (IEC / UL)
Per Pallet	27 pieces
Per Container (40' HQ)	594 pieces

ELECTRICAL DATA | NMOT*

CS3U	345P	350P	355P	360P
Nominal Max. Power (P _{max})	255 W	259 W	263 W	266 W
Opt. Operating Voltage (V _{mp})	35.6 V	35.8 V	36.0 V	36.1 V
Opt. Operating Current (I _{mp})	7.17 A	7.24 A	7.29 A	7.37 A
Open Circuit Voltage (V _{oc})	43.3 V	43.5 V	43.7 V	43.9 V
Short Circuit Current (I _{sc})	7.61 A	7.68 A	7.74 A	7.80 A

*Under Nominal Module Operating Temperature (NMOT), irradiance of 800 W/m², spectrum AM 1.5, ambient temperature 20°C, wind speed 1 m/s.

TEMPERATURE CHARACTERISTICS

Specification	Data
Temperature Coefficient (P _{max})	-0.38 % / °C
Temperature Coefficient (V _{oc})	-0.29 % / °C
Temperature Coefficient (I _{sc})	0.05 % / °C
Nominal Module Operating Temperature	43 ± 2 °C

The aforesaid datasheet only provides the general information on Canadian Solar products and, due to the on-going innovation and improvement, please always contact your local Canadian Solar sales representative for the updated information on specifications, key features and certification requirements of Canadian Solar products in your region.

Please be kindly advised that PV modules should be handled and installed by qualified people who have professional skills and please carefully read the safety and installation instructions before using our PV modules.

