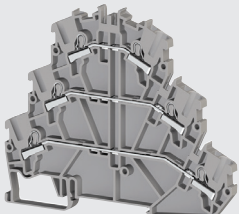


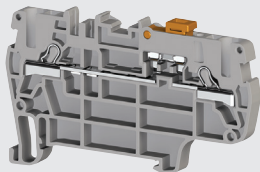
307139



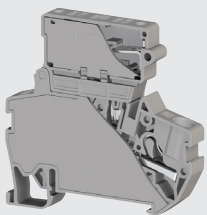
336500



307199



307169



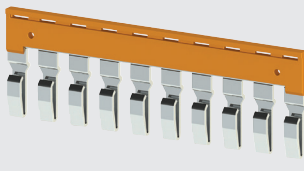
307249



476602



476604



476249

PYK series - "Push-in" spring clamp terminals

Cable connection is made by simply "pushing" the cable into the terminal without the need for tools. Secure connection is guaranteed in all conditions saving time in terminating. If required, cable can easily be removed with the use of a screwdriver. The easy "push-in" termination together with "plug-in" bridging combs combine to speed up connection of terminals, providing a rapid, secure, safe connection over time.

type	wire size (mm ²)	amperage EN60947-7-1	terminal width	description	
Feed through terminals (PYK)					
307019	1.5 mm	17.5A	4.2 mm	rail mount spring clamp terminal	
307109	2.5 mm	24A	5 mm	rail mount spring clamp terminal	
307119	4 mm	32A	6 mm	rail mount spring clamp terminal	
307129	6 mm	41A	8 mm	rail mount spring clamp terminal	
307139	10 mm	57A	10 mm	rail mount spring clamp terminal	
446639	end plate	–	1.2 mm	for 1.5 mm terminal	307019
446449	end plate	–	1.2 mm	for 2.5 mm terminal	307109
446459	end plate	–	1.2 mm	for 4.0 mm terminal	307119
446469	end plate	–	1.2 mm	for 6.0 mm terminal	307129
446479	end plate	–	1.2 mm	for 10.0 mm terminal	307139
Earth terminals - yellow/green screw-less, clip-on earth terminals					
336500	2.5 mm	24A	5 mm	rail mount spring clamp earth terminal	
336510	4 mm	32A	6 mm	rail mount spring clamp earth terminal	
336520	6 mm	41A	8 mm	rail mount spring clamp earth terminal	
336530	10 mm	57A	10 mm	rail mount spring clamp earth terminal	
446442	end plate	–	1.2 mm	for 2.5 mm earth terminal	336500
446452	end plate	–	1.2 mm	for 4.0 mm earth terminal	336510
446462	end plate	–	1.2 mm	for 6.0 mm earth terminal	336520
446472	end plate	–	1.2 mm	for 10.0 mm earth terminal	336530
Multi-tier terminals					
307179	2.5mm	24A	5 mm	two tier	spring clamp terminal
307199	2.5mm	24A	5 mm	three tier	spring clamp terminal
446519	end plate	–	1.2 mm	for 2.5 mm 2 tier terminal	307179
446529	end plate	–	1.2 mm	for 2.5 mm 3 tier terminal	307199
Disconnect terminals					
307169	2.5 mm	20A	5 mm	rail mount disconnect terminal	
446509	end plate	–	1.2 mm	for disconnect terminal	307169
Fuse terminals - for 5 x 20 mm fuses fully insulated - no end plate required					
307249	2.5 mm	10A	8 mm	rail mount fused terminal	
307259	2.5 mm	10A	8 mm	fused term. LED indication	24 VDC
307269	2.5 mm	10A	8 mm	fused term. LED indication	220 VAC
PYK test terminal (plug-in) plugs into standard PYK range terminals					
498559	1.5 mm	plug-in test terminal		(provides an additional terminal outlet)	
Cross connectors (plug-in bridging bars)					
476602	UK1.5/2	2 pole	4.2 mm	plug-in bridge piece for terminals	
476603	UK1.5/3	3 pole	4.2 mm	plug-in bridge piece for terminals	
476604	UK1.5/4	4 pole	4.2 mm	plug-in bridge piece for terminals	
476609	UK1.5/10	10 pole	4.2 mm	plug-in bridge piece for terminals	
476222	UK2.5/2	2 pole	5 mm	plug-in bridge piece for terminals	
476223	UK2.5/3	3 pole	5 mm	plug-in bridge piece for terminals	
476224	UK2.5/4	4 pole	5 mm	plug-in bridge piece for terminals	
476229	UK2.5/10	10 pole	5 mm	plug-in bridge piece for terminals	
476232	UK4/2	2 pole	6 mm	plug-in bridge piece for terminals	
476233	UK4/3	3 pole	6 mm	plug-in bridge piece for terminals	
476234	UK4/4	4 pole	6 mm	plug-in bridge piece for terminals	
476239	UK4/10	10 pole	6 mm	plug-in bridge piece for terminals	
476242	UK6/2	2 pole	8 mm	plug-in bridge piece for terminals	
476243	UK6/3	3 pole	8 mm	plug-in bridge piece for terminals	
476244	UK6/4	4 pole	8 mm	plug-in bridge piece for terminals	
476249	UK6/10	10 pole	8 mm	plug-in bridge piece for terminals	
476252	UK10/2	2 pole	10 mm	plug-in bridge piece for terminals	
476253	UK10/3	3 pole	10 mm	plug-in bridge piece for terminals	
476254	UK10/4	4 pole	10 mm	plug-in bridge piece for terminals	
476259	UK10/10	10 pole	10 mm	plug-in bridge piece for terminals	

DIN mounting rail, see page L-13