



PF34...

Juliet joysticks are control devices for all industrial machinery. They operate as auxiliary controllers for electric motors through power interface such as contactor. Available with up to 5 speeds in each direction with cross or 360° movement.

- Utilisation category: AC 15
- Rated operational current: 2A
- Rated operational voltage: 48 V
- Connections: screw type terminal

| type | no. steps ↑ ↓ | no. steps ← → | lever guide | description |
|--|---------------------|---------------------|----------------|-------------------------|
| Juliet series joystick control switches | | | | |
| PF34021000004 | 1 | 0 | 9872 | joystick control switch |
| PF340211000001 | 1 | 1 | 9871 | joystick control switch |
| PF340212000001 | 1 | 2 | 9873 | joystick control switch |
| PF340213000001 | 1 | 3 | 9838 | joystick control switch |
| PF340220000004 | 2 | 0 | 9880 | joystick control switch |
| PF340222000001 | 2 | 2 | 9876 | joystick control switch |
| PF340223000001 | 2 | 3 | 9841 | joystick control switch |
| PF340230000004 | 3 | 0 | 9824 | joystick control switch |
| PF340233000001 | 3 | 3 | 9826 | joystick control switch |
| PF340235000001 | 3 | 5 | 9842 | joystick control switch |
| PF340255000001 | 5 | 5 | 9830 | joystick control switch |

Romeo series joystick control switches

Romeo joysticks are designed to control complex machine tools used in heavy duty and aggressive environments.

- Simple, convenient wiring and termination facility
- Conformity to standards: IEC/EN 60204-1, 60947-1, 60947-5-1, 61000-6-2/3

- Utilisation category: AC 15
- Rated operational current:

| | |
|-----|-------|
| 2 A | 0.5 A |
|-----|-------|
- Rated operational voltage:

| | |
|------|-------|
| 48 V | 230 V |
|------|-------|

With NO contact in the handle grip

| | | | | |
|--------------|---|---|------|-------------------------|
| PF580L011003 | 1 | 1 | 7747 | joystick control switch |
| PF580C020003 | 2 | 0 | 9833 | joystick control switch |
| PF580L022003 | 2 | 2 | 7746 | joystick control switch |
| PF580C030003 | 3 | 0 | 7749 | joystick control switch |
| PF580L031003 | 3 | 1 | 7745 | joystick control switch |
| PF580L032003 | 3 | 2 | 7750 | joystick control switch |
| PF580L033003 | 3 | 3 | 7751 | joystick control switch |
| PF580L041003 | 4 | 1 | 7830 | joystick control switch |
| PF580L042003 | 4 | 2 | 7831 | joystick control switch |
| PF580L044003 | 4 | 4 | 7833 | joystick control switch |
| PF580C050003 | 5 | 0 | 7749 | joystick control switch |
| PF580L053003 | 5 | 3 | 7750 | joystick control switch |
| PF580L055003 | 5 | 5 | 7751 | joystick control switch |

Accessories for joysticks

Kit for mounting potentiometer onto joystick (ea)

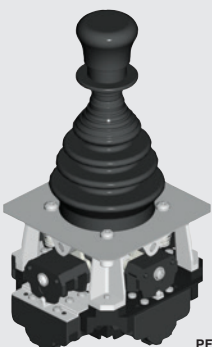
| | | |
|------------|---------|--------------------------------------|
| PRVV9020PE | 4.7 KΩ | Megatron potentiometer for joysticks |
| PRVV9025PE | 10.0 KΩ | Megatron potentiometer for joysticks |
| PRVV9035PE | 2.2 KΩ | Megatron potentiometer for joysticks |
| PRTA0150PE | | blank label for joysticks |
| PRTA0151PE | | lifting-traverse label for joysticks |
| PRTA0152PE | | trolley-rotation label for joysticks |

Romeo-CK series joystick control switches

Old CK series joystick controllers feature separate replaceable contact blocks rated for switching higher currents and voltages.

- Utilisation category: AC 15
- Rated operational current: 1.9 A
- Rated operational voltage: 380 V
- Insulation voltage: 500 V

| | | | |
|--------------|---|---|-------------------------|
| PF582L011002 | 1 | 1 | joystick control switch |
| PF582L022002 | 2 | 2 | joystick control switch |
| PF582L033002 | 3 | 3 | joystick control switch |



PF582...