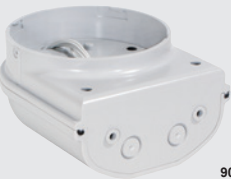




90367



90368



90370



90512

MLINE - Multivoltage - Multifunction - Modular - Multichannel

BASES - for MLINE beacons or sounders or combinations of both

MLINE bases provide a number of mounting options, the unique modular concept accepts different audio and/or signalling devices to be mounted in the most practical way.

Different **DOMES** (*audio, visual or both*) can be mounted on any of six different BASES which determine the supply voltage of the unit **12 - 24 VAC/DC or 90 - 240 VAC**

type	lens colour		supply voltage	description	dimensions (mm)	
					Ø	height
SHALLOW compact low profile surface mount bottom cable entry						
90367	grey	LT	12 - 24 VAC/DC	shallow base for MLine domes	92	21
90343	red	LT	12 - 24 VAC/DC	shallow base for MLine domes	92	21
DEEP surface mount base with 2 x M20 side knockouts and compression gland						
90368	grey	LT	12 - 24 VAC/DC	deep base for MLine domes	92	46
90345	red	LT	12 - 24 VAC/DC	deep base for MLine domes	92	46
90369	grey	HT	120 - 240 VAC/DC	deep base for MLine domes	92	46
90827*	grey	HT	120 - 240 VAC/DC	deep base for MLine domes	92	46
WALL lateral wall mount base with 2 x M20 knockouts						
90370	grey	LT	12 - 24VAC/DC	wall base for MLine domes	115	61
90371	grey	HT	120 - 240 VAC/DC	wall base for MLine domes	115	61
90828*	grey	HT	120 - 240 VAC/DC	wall base for MLine domes	115	61
POLE pole mount base for 1" or 1/2" NPT threaded pole						
90610	grey	LT	12 - 24 VAC/DC	pole mnt base for MLine domes	92	66
90612	grey	HT	120 - 240 VAC/DC	pole mnt base for MLine domes	92	66
90623*	grey	HT	120 - 240 VAC/DC	pole mnt base for MLine domes	92	66
FLUSH flush mount base for applications requiring low visual, discrete aesthetics						
90375	white	LT	12 - 24 VAC/DC	flush base for MLine domes	146	71
90376	white	HT	120 - 240 VAC/DC	flush base for MLine domes	146	71
DOUBLE wall mount base accommodates 2 x warning and/or signalling devices						
90372	grey	LT	12 - 24 VAC/DC	double base for MLine domes	120	97
90512	grey	HT	120 - 240 VAC/DC	double base for MLine domes	120	97

* Junior economical base only permits one function to be selected

Accessories for MLINE beacons and sounders

Stainless steel protection grids (heavy duty)

type	size	SHALLOW base		DEEP base	
		12 - 24 VAC/DC		12 - 24 VAC/DC	120 - 240 VAC/DC
90557	size 0 for	XLF S/RGA		-	
90551	size 1 for	SIR-E / SIR-E LED		XLF S/RGA	
90552	size 2 for	SIR-E MAX/ SIR-E LED MAX		SIR-E / SIR-E LED	
90553	size 3 for	FLR / SLR		SIR-E MAX/ SIR-E LED MAX	
90554	size 4 for	-		FLR S / SLR S	