



LPC S120



LPC S230



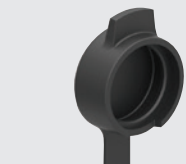
LPC S320



LPC R1006



LPC ZS...



LPC D01



LPX AU120



LPX C01



LPX CS01



Platinum series Ø22 mm pushbuttons and selector switches

- IP66 - IP67 - IP69K degree of protection for use in even in extreme temperatures -25° to +70°C
- Actuators supplied without **LPX AU120** contact block support (*to be ordered separately*)

type	colour	positions	description	spring return
Selector switch actuators				
LPC S120	black	2 pos.	selector switch actuator	O - I
LPC S121	black	2 pos.	selector switch actuator	from R
LPC S130	black	3 pos.	selector switch actuator	I - O - II
LPC S131	black	3 pos.	selector switch actuator	from L+R
LPC S132	black	3 pos.	selector switch actuator	from L
LPC S133	black	3 pos.	selector switch actuator	from R

Lever selector switch actuators				
LPC S220	black	2 pos.	lever selector switch actuator	O - I
LPC S221	black	2 pos.	lever selector switch actuator	from R
LPC S230	black	3 pos.	lever selector switch actuator	I - O - II
LPC S231	black	3 pos.	lever selector switch actuator	from L+R
LPC S232	black	3 pos.	lever selector switch actuator	from L
LPC S233	black	3 pos.	lever selector switch actuator	from R

Key selector switch actuators						
type	colour	positions	description	key remove	spring return	
LPC S320	black	2 pos.	selector switch actuator	L	O - I	
LPC S321	black	2 pos.	selector switch actuator	L+R	O - I	
LPC S340	black	3 pos.	selector switch actuator	L	from R	
LPC S330	black	3 pos.	selector switch actuator	centre	I - O - II	
LPC S331	black	3 pos.	selector switch actuator	L+C+R	I - O - II	
LPC S332	black	3 pos.	selector switch actuator	L	I - O - II	
LPC S333	black	3 pos.	selector switch actuator	R	I - O - II	
LPC S360	black	3 pos.	selector switch actuator	centre	from R	
LPC S370	black	3 pos.	selector switch actuator	centre	from L+R	

Versions with different key codes available on request (see page D-5)

Mechanical reset pushbuttons				
LPC R1002	black	-	mechanical reset button (<i>adj. length</i>)	0 -150 mm
LPC R1004	red	-	mechanical reset button (<i>adj. length</i>)	0 -150 mm
LPC R1006	blue	(RESET)	mechanical reset button (<i>adj. length</i>)	0 -150 mm

Pulse-tone monoblock buzzer Ø22 mm					<i>continuous or pulse tone</i>
LPC ZSB	black	IP40	18 - 30 VAC/DC panel mount buzzer	90dB (10 cm)	
LPC ZSM	black	IP40	185 - 265 VAC panel mount buzzer	90dB (10 cm)	
LPC ZSMIP	black	IP65	185 - 265 VAC panel mount buzzer	80dB (10 cm)	

USB and RJ45 communication interfaces Ø22 mm					<i>IP65 (with cap closed)</i>
LPC D01	black	USB	panel mount communication interface	A-A	
LPC D03	black	USB	panel mount communication interface	A-B	
LPC D06	black	RJ45	panel mount communication interface	Ethernet	

Contact blocks and support for control devices				
Contact block support		can support up to 9 contact blocks (<i>3 rows of 3 contact blocks</i>)		
LPX AU120		contact block support / mounting adaptor for 3 contact blocks		
Contact blocks		<i>requires LPX AU120 (above) to mount onto actuators</i>		
<ul style="list-style-type: none"> • Self cleaning, dual scrape/oscillating action contacts • IEC rated insulation voltage: 690V - thermal current Ith: 10A • Can be clipped onto the back of another contact block 				
LPX C10	1 X NO	-	screw terminal contact block	standard
LPX C01	1 X NC	-	screw terminal contact block	standard
LPX C10A	1 X NO	-	screw terminal contact block	early make
LPX C01D	1 X NC	-	screw terminal contact block	late break
LPX CS10	1 X NO	-	push-in terminal contact block	standard
LPX CS01	1 X NC	-	push-in terminal contact block	standard