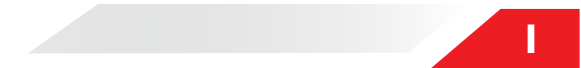






PLUGS & SOCKETS



	Industrial plugs and sockets	I-1...5	Scame
	Industrial switched sockets	I-6...7	Scame
	Distribution boards	I-8...9	Scame
	Industrial plug adaptors	I-9	Scame
	Weatherproof switches and sockets	I-10	Scame
	Weatherproof plugs and sockets	I-11	Wieland
	Installation connectors	I-12	Wieland
	Multi pole connectors	I-13...15	Wieland
	Photovoltaic (PV) solar connectors	I-16	EM
	Flat blade connectors	I-17...18	Rema



213.163...



213.633...



218.163...



218.1636...



313.324...



318.324...

Optima series 16A - 32A - 63A - 125A

- Insulation voltage: 690 VAC
- Standards: IEC 60309-2
- Material: Thermoplastic (*halogen free*)
- Impact resistance: IK08 (*1.7kg with a striking energy of 2J*)
- Operating temperature: -25...+40°C (*max operating temperature +60°C*)
- Cable inlet: External cable stay with tulip clamping IP67 gland

Voltage Coding	
■ 100 to 130V*	
■ 200 to 250V	
■ 380 to 480V	
■ 480 to 525V	
* On request	

type	rated current	(h) pos.	pin configuration	IP protection 44/54 66/7/9	description	cable outlet	price
Male plugs (straight cable exit) 16 - 125A							
213.1633	16A	6h ■	2P+E (3pin)	●	male ind. plug	straight	79.36
213.1636	16A	6h ■	3P+E (4pin)	●	male ind. plug	straight	98.91
213.1637	16A	6h ■	3P+N+E (5pin)	●	male ind. plug	straight	123.06
213.3233	32A	6h ■	2P+E (3pin)	●	male ind. plug	straight	141.46
213.3236	32A	6h ■	3P+E (4pin)	●	male ind. plug	straight	166.76
213.3237	32A	6h ■	3P+N+E (5pin)	●	male ind. plug	straight	186.31
213.6333	63A	6h ■	2P+E (3pin)	●	male ind. plug	straight	748.68
213.6336	63A	6h ■	3P+E (4pin)	●	male ind. plug	straight	633.67
213.6337	63A	6h ■	3P+N+E (5pin)	●	male ind. plug	straight	667.03
218.1633	16A	6h ■	2P+E (3pin)	●	male ind. plug	straight	164.46
218.1636	16A	6h ■	3P+E (4pin)	●	male ind. plug	straight	192.06
218.16366	16A	7h ■	3P+E (4pin)	●	male ind. plug	straight	259.91
218.1637	16A	6h ■	3P+N+E (5pin)	●	male ind. plug	straight	217.36
218.16376	16A	7h ■	3P+N+E (5pin)	●	male ind. plug	straight	310.51
218.3233	32A	6h ■	2P+E (3pin)	●	male ind. plug	straight	265.66
218.3236	32A	6h ■	3P+E (4pin)	●	male ind. plug	straight	270.26
218.32364*	32A	3h ■	3P+E (4pin)	●	male ind. plug	straight	270.26
218.32366	32A	7h ■	3P+E (4pin)	●	male ind. plug	straight	338.12
218.3237	32A	6h ■	3P+N+E (5pin)	●	male ind. plug	straight	301.31
218.32376	32A	7h ■	3P+N+E (5pin)	●	male ind. plug	straight	377.22
218.6333	63A	6h ■	2P+E (3pin)	●	male ind. plug	straight	832.63
218.6336	63A	6h ■	3P+E (4pin)	●	male ind. plug	straight	695.78
218.63366	63A	7h ■	3P+E (4pin)	●	male ind. plug	straight	1 074.14
218.6337	63A	6h ■	3P+N+E (5pin)	●	male ind. plug	straight	727.98
218.63376	63A	7h ■	3P+N+E (5pin)	●	male ind. plug	straight	1 144.29
218.12533	125A	6h ■	2P+E (3pin)	●	male ind. plug	straight	1 981.52
218.12536	125A	6h ■	3P+E (4pin)	●	male ind. plug	straight	1 726.21
218.125366	125A	7h ■	3P+E (4pin)	●	male ind. plug	straight	2 573.79
218.12537	125A	6h ■	3P+N+E (5pin)	●	male ind. plug	straight	1 834.31
218.125376	125A	7h ■	3P+N+E (5pin)	●	male ind. plug	straight	2 743.99
Connectors/couplers (female in-line socket)							
313.1643	16A	6h ■	2P+E (3pin)	●	female connector	straight	131.11
313.1646	16A	6h ■	3P+E (4pin)	●	female connector	straight	138.01
313.1647	16A	6h ■	3P+N+E (5pin)	●	female connector	straight	167.91
313.3243	32A	6h ■	2P+E (3pin)	●	female connector	straight	159.86
313.3246	32A	6h ■	3P+E (4pin)	●	female connector	straight	194.36
313.3247	32A	6h ■	3P+N+E (5pin)	●	female connector	straight	215.06
313.6343	63A	6h ■	2P+E (3pin)	●	female connector	straight	860.23
313.6346	63A	6h ■	3P+E (4pin)	●	female connector	straight	767.08
313.6347	63A	6h ■	3P+N+E (5pin)	●	female connector	straight	785.48
318.1643	16A	6h ■	2P+E (3pin)	●	female connector	straight	230.01
318.1646	16A	6h ■	3P+E (4pin)	●	female connector	straight	254.16
318.16466	16A	7h ■	3P+E (4pin)	●	female connector	straight	332.37
318.1647	16A	6h ■	3P+N+E (5pin)	●	female connector	straight	279.46
318.16476	16A	7h ■	3P+N+E (5pin)	●	female connector	straight	382.97
318.3243	32A	6h ■	2P+E (3pin)	●	female connector	straight	319.72
318.3246	32A	6h ■	3P+E (4pin)	●	female connector	straight	315.11
318.32464*	32A	3h ■	3P+E (4pin)	●	female connector	straight	332.37
318.32466	32A	7h ■	3P+E (4pin)	●	female connector	straight	415.17
318.3247	32A	6h ■	3P+N+E (5pin)	●	female connector	straight	343.87
318.32476	32A	7h ■	3P+N+E (5pin)	●	female connector	straight	473.82
318.6343	63A	6h ■	2P+E (3pin)	●	female connector	straight	954.53
318.6346	63A	6h ■	3P+E (4pin)	●	female connector	straight	841.83
318.63466	63A	7h ■	3P+E (4pin)	●	female connector	straight	1 209.84
318.6347	63A	6h ■	3P+N+E (5pin)	●	female connector	straight	860.23
318.63476	63A	7h ■	3P+N+E (5pin)	●	female connector	straight	1 291.50

Continued overleaf....

* Refrigerated container (Reefer plugs)



243.639...



248.329...



240.639...T



570.90164

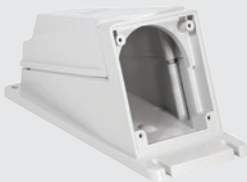
type	rated current	(h) pos.	pin configuration	IP protection 44/54 66/7/9	description	flange size	price
continued... Connectors/couplers (female in-line socket)							
318.12543	125A	6h	2P+E (3pin)	●	female connector	straight	2 375.98
318.12546	125A	6h	3P+E (4pin)	●	female connector	straight	2 382.88
318.125466	125A	7h	3P+E (4pin)	●	female connector	straight	3 401.81
318.12547	125A	6h	3P+N+E (5pin)	●	female connector	straight	2 548.48
318.125476	125A	7h	3P+N+E (5pin)	●	female connector	straight	3 696.22
Optima series - Appliance inlets (male pins - accept female connector)							
Flush mount appliance inlet (straight inlet)							
243.1693	16A	6h	2P+E (3pin)	●	flush mnt appliance inlet	75 x 75	172.51
243.1696	16A	6h	3P+E (4pin)	●	flush mnt appliance inlet	75 x 75	194.36
243.1697	16A	6h	3P+N+E (5pin)	●	flush mnt appliance inlet	75 x 75	251.86
243.3293	32A	6h	2P+E (3pin)	●	flush mnt appliance inlet	75 x 75	280.61
243.3296	32A	6h	3P+E (4pin)	●	flush mnt appliance inlet	75 x 75	299.01
243.3297	32A	6h	3P+N+E (5pin)	●	flush mnt appliance inlet	75 x 75	307.06
243.6393	63A	6h	2P+E (3pin)	●	flush mnt appliance inlet	100 x 110	838.38
243.6396	63A	6h	3P+E (4pin)	●	flush mnt appliance inlet	100 x 110	895.88
243.6397	63A	6h	3P+N+E (5pin)	●	flush mnt appliance inlet	100 x 110	951.08
248.1693	16A	6h	2P+E (3pin)	●	flush mnt appliance inlet	75 x 75	244.96
248.1696	16A	6h	3P+E (4pin)	●	flush mnt appliance inlet	75 x 75	258.76
248.16966	16A	7h	3P+E (4pin)	●	flush mnt appliance inlet	75 x 75	326.62
248.1697	16A	6h	3P+N+E (5pin)	●	flush mnt appliance inlet	75 x 75	326.62
248.16976	16A	7h	3P+N+E (5pin)	●	flush mnt appliance inlet	75 x 75	407.12
248.3293	32A	6h	2P+E (3pin)	●	flush mnt appliance inlet	75 x 75	343.87
248.3296	32A	6h	3P+E (4pin)	●	flush mnt appliance inlet	75 x 75	365.72
248.32966	32A	7h	3P+E (4pin)	●	flush mnt appliance inlet	75 x 75	456.57
248.3297	32A	6h	3P+N+E (5pin)	●	flush mnt appliance inlet	75 x 75	401.37
248.32976	32A	7h	3P+N+E (5pin)	●	flush mnt appliance inlet	75 x 75	503.72
248.6393	63A	6h	2P+E (3pin)	●	flush mnt appliance inlet	100 x 110	549.72
248.6396	63A	6h	3P+E (4pin)	●	flush mnt appliance inlet	100 x 110	588.82
248.63966	63A	7h	3P+E (4pin)	●	flush mnt appliance inlet	100 x 110	1 208.69
248.6397	63A	6h	3P+N+E (5pin)	●	flush mnt appliance inlet	100 x 110	616.42
248.63976	63A	7h	3P+N+E (5pin)	●	flush mnt appliance inlet	100 x 110	1 282.30
248.12593	125A	6h	2P+E (3pin)	●	flush mnt appliance inlet	114 x 114	1 068.39
248.12596	125A	6h	3P+E (4pin)	●	flush mnt appliance inlet	114 x 114	1 152.34
248.125966	125A	7h	3P+E (4pin)	●	flush mnt appliance inlet	114 x 114	2 066.62
248.12597	125A	6h	3P+N+E (5pin)	●	flush mnt appliance inlet	114 x 114	1 271.94
248.125976	125A	7h	3P+N+E (5pin)	●	flush mnt appliance inlet	114 x 114	2 372.53
Surface mount appliance inlet (angled inlet) cable entry							
240.1693	16A	6h	2P+E (3pin)	●	surf mnt appliance inlet	M25	256.46
240.1696	16A	6h	3P+E (4pin)	●	surf mnt appliance inlet	M25	281.76
240.1697	16A	6h	3P+N+E (5pin)	●	surf mnt appliance inlet	M25	348.47
240.3293	32A	6h	2P+E (3pin)	●	surf mnt appliance inlet	M32	380.67
240.3296	32A	6h	3P+E (4pin)	●	surf mnt appliance inlet	M32	401.37
240.3297	32A	6h	3P+N+E (5pin)	●	surf mnt appliance inlet	M32	410.57
240.6393T	63A	6h	2P+E (3pin)	●	surf mnt appliance inlet	M40	1 114.39
240.6396T	63A	6h	3P+E (4pin)	●	surf mnt appliance inlet	M40	1 223.64
240.6397T	63A	6h	3P+N+E (5pin)	●	surf mnt appliance inlet	M40	1 314.50
245.1693	16A	6h	2P+E (3pin)	●	surf mnt appliance inlet	M25	313.96
245.1696	16A	6h	3P+E (4pin)	●	surf mnt appliance inlet	M25	328.92
245.1697	16A	6h	3P+N+E (5pin)	●	surf mnt appliance inlet	M25	400.22
245.3293	32A	6h	2P+E (3pin)	●	surf mnt appliance inlet	M32	418.62
245.3296	32A	6h	3P+E (4pin)	●	surf mnt appliance inlet	M32	441.62
245.3297	32A	6h	3P+N+E (5pin)	●	surf mnt appliance inlet	M32	478.42
245.6393T	63A	6h	2P+E (3pin)	●	surf mnt appliance inlet	M40	1 081.04
245.6396T	63A	6h	3P+E (4pin)	●	surf mnt appliance inlet	M40	1 187.99
245.6397T	63A	6h	3P+N+E (5pin)	●	surf mnt appliance inlet	M40	1 276.54
245.12597T	125A	6h	3P+N+E (5pin)	●	surf mnt appliance inlet	M63	3 018.85
Protection caps for plugs and appliance inlets IP66/IP67/IP69							
570.90163	16A	-	2P+E	●	covers for plugs and inlets		51.76
570.90164	16A	-	3P+E	●	covers for plugs and inlets		55.21
570.90165	16A	-	3P+N+E	●	covers for plugs and inlets		60.96
570.90324	32A	-	2/3P+E	●	covers for plugs and inlets		69.01
570.90325	32A	-	3P+N+E	●	covers for plugs and inlets		73.61
570.9063	63A	-	all configurations	●	covers for plugs and inlets		44.86
570.9125	125A	-	all configurations	●	covers for plugs and inlets		52.91



413.166...



418.636...



570.M0125



423.166...



428.166...

Optima series - Panel mount sockets 16A - 32A - 63A - 125A

- Insulation voltage: 690 VAC
- Operating temperature: -25...+40°C (max operating temperature +60°C)
- Material: Thermoplastic (halogen free) / Impact resistance IK08

type	rated current	(h) pos.	pin configuration	IP protection 44/54	67/8/9	description	flange size	price
Flush mount angled socket outlet (18°) 16A - 125A Standards: IEC 60309-2								
413.1663	16A	6h	2P+E (3pin)	●		angled socket	70 x 87	123.06
413.1666	16A	6h	3P+E (4pin)	●		angled socket	70 x 87	139.16
413.1667	16A	6h	3P+N+E (5pin)	●		angled socket	70 x 87	143.76
413.3263	32A	6h	2P+E (3pin)	●		angled socket	84 x 106	164.46
413.3266	32A	6h	3P+E (4pin)	●		angled socket	84 x 106	172.51
413.3267	32A	6h	3P+N+E (5pin)	●		angled socket	84 x 106	180.56
413.6363	63A	6h	2P+E (3pin)	●		angled socket	100 x 110	791.23
413.6366	63A	6h	3P+E (4pin)	●		angled socket	100 x 110	815.38
413.6367	63A	6h	3P+N+E (5pin)	●		angled socket	100 x 110	883.23
418.1663	16A	6h	2P+E (3pin)		●	angled socket	70 x 87	188.61
418.1666	16A	6h	3P+E (4pin)		●	angled socket	70 x 87	204.71
418.16666	16A	7h	3P+E (4pin)		●	angled socket	70 x 87	348.47
418.1667	16A	6h	3P+N+E (5pin)		●	angled socket	70 x 87	233.46
418.16676	16A	7h	3P+N+E (5pin)		●	angled socket	70 x 87	424.37
418.3263	32A	6h	2P+E (3pin)		●	angled socket	84 x 106	294.41
418.3266	32A	6h	3P+E (4pin)		●	angled socket	84 x 106	299.01
418.32664*	32A	3h	3P+E (4pin)		●	angled socket	84 x 106	391.02
418.32666	32A	7h	3P+E (4pin)		●	angled socket	84 x 106	488.77
418.3267	32A	6h	3P+N+E (5pin)		●	angled socket	84 x 106	343.87
418.32676	32A	7h	3P+N+E (5pin)		●	angled socket	84 x 106	534.77
418.6363	63A	6h	2P+E (3pin)		●	angled socket	100 x 110	853.33
418.6366	63A	6h	3P+E (4pin)		●	angled socket	100 x 110	879.78
418.63666	63A	7h	3P+E (4pin)		●	angled socket	100 x 110	1 099.44
418.6367	63A	6h	3P+N+E (5pin)		●	angled socket	100 x 110	939.58
418.63676	63A	7h	3P+N+E (5pin)		●	angled socket	100 x 110	1 190.29
418.12563	125A	6h	2P+E (3pin)		●	angled socket	114 x 114	2 400.13
418.12566	125A	6h	3P+E (4pin)		●	angled socket	114 x 114	2 035.57
418.125666	125A	7h	3P+E (4pin)		●	angled socket	114 x 114	3 007.35
418.12567	125A	6h	3P+N+E (5pin)		●	angled socket	114 x 114	2 085.02
418.125676	125A	7h	3P+N+E (5pin)		●	angled socket	114 x 114	3 348.91
Micro-switch - for plug inserted indication of above angled outlet sockets only								
654.0391	16/32A		1x NO			micro-switch for above angled sockets	-	149.51
654.0392	16/32A		1x NC			micro-switch for above angled sockets	-	149.51
654.0393	63/125A		1x NO			micro-switch for above angled sockets	-	216.21
654.0394	63/125A		1x NC			micro-switch for above angled sockets	-	216.21
Housings to surface mount (above) angled sockets								
570.0116	16A		angled housing		●	for p/mnt sockets	70 x 87	103.51
570.0016	16A		straight housing		●	for p/mnt sockets	70 x 87	103.51
570.0132	32A		angled housing		●	for p/mnt sockets	84 x 106	142.61
570.0032	32A		straight housing		●	for p/mnt sockets	84 x 106	139.16
570.M0163	63A		angled housing		●	for p/mnt sockets	100 x 110	669.33
570.M0125	125A		angled housing		●	for p/mnt sockets	114 x 114	1 026.99
Flush mount straight socket outlet 16A - 125A Standards: IEC 60309-2								
423.1663	16A	6h	2P+E (3pin)	●		straight socket	75 x 75	118.46
423.1663/R	16A	6h	2P+E (3pin)	●		straight socket	62 x 62	159.86
423.1666	16A	6h	3P+E (4pin)	●		straight socket	75 x 75	134.56
423.1666/R	16A	6h	3P+E (4pin)	●		straight socket	62 x 62	172.51
423.1667	16A	6h	3P+N+E (5pin)	●		straight socket	75 x 75	138.01
423.3263	32A	6h	2P+E (3pin)	●		straight socket	75 x 75	280.61
423.3266	32A	6h	3P+E (4pin)	●		straight socket	75 x 75	287.51
423.3267	32A	6h	3P+N+E (5pin)	●		straight socket	75 x 75	333.52
423.6363	63A	6h	2P+E (3pin)	●		straight socket	100 x 110	791.23
423.6366	63A	6h	3P+E (4pin)	●		straight socket	100 x 110	815.38
423.6367	63A	6h	3P+N+E (5pin)	●		straight socket	100 x 110	883.23
428.1663	16A	6h	2P+E (3pin)		●	straight socket	75 x 75	250.71
428.1666	16A	6h	3P+E (4pin)		●	straight socket	75 x 75	277.16
428.1667	16A	6h	3P+N+E (5pin)		●	straight socket	75 x 75	339.27
428.3263	32A	6h	2P+E (3pin)		●	straight socket	75 x 75	389.87
428.3266	32A	6h	3P+E (4pin)		●	straight socket	75 x 75	391.02
428.32664*	32A	3h	3P+E (4pin)		●	straight socket	75 x 75	391.02
428.3267	32A	6h	3P+N+E (5pin)		●	straight socket	75 x 75	426.67

Continued overleaf....

* Refrigerated container (Reefer plugs)



428.636...



513.325...



518.635...T



518.325...TS

type	rated current	(h) pos.	pin configuration	IP protection 44/54 67/8/9	description	flange size	price
continued... Flush mount socket outlet - straight							
428.6363	63A	6h	2P+E (3pin)	●	straight socket	100 x 110	853.33
428.6366	63A	6h	3P+E (4pin)	●	straight socket	100 x 110	879.78
428.6367	63A	6h	3P+N+E (5pin)	●	straight socket	100 x 110	952.23
428.12563	125A	6h	2P+E (3pin)	●	straight socket	114 x 114	2 400.13
428.12566	125A	6h	3P+E (4pin)	●	straight socket	114 x 114	2 405.88
428.12567	125A	6h	3P+N+E (5pin)	●	straight socket	114 x 114	2 676.14
OPTIMA series - Surface-mount socket outlets							
• Insulation voltage:		690 VAC					
• Operating temperature:		-25...+40°C (max operating temperature +60°C)					
• Material:		Thermoplastic (halogen free)					
• Impact resistance:		IK08 (1.7kg with a striking energy of 2J)					
type	rated current	(h) pos.	pin configuration	IP protection 44/54 67/8/9	description	cable entry	price
BASE version - IP44 compact, economical, slimline socket outlets (angled)							
513.1653	16A	6h	2P+E (3pin)	●	surface mnt socket	M20/25	181.71
513.1656	16A	6h	3P+E (4pin)	●	surface mnt socket	M20/25	213.91
513.1657	16A	6h	3P+N+E (5pin)	●	surface mnt socket	M20/25	218.51
513.3253	32A	6h	2P+E (3pin)	●	surface mnt socket	M32	276.01
513.3256	32A	6h	3P+E (4pin)	●	surface mnt socket	M32	281.76
513.3257	32A	6h	3P+N+E (5pin)	●	surface mnt socket	M32	343.87
TOP version - IP44 and IP67 (angled)							
• Compact, flexible, safe - removable socket section for ease of wiring							
• Reversible base (1 or 2 cable outlets top or bottom entry)							
513.1653T	16A	6h	2P+E (3pin)	●	surface mnt socket	M20/25	234.61
513.1656T	16A	6h	3P+E (4pin)	●	surface mnt socket	M20/25	276.01
513.1657T	16A	6h	3P+N+E (5pin)	●	surface mnt socket	M20/25	282.91
513.3253T	32A	6h	2P+E (3pin)	●	surface mnt socket	M32	357.67
513.3256T	32A	6h	3P+E (4pin)	●	surface mnt socket	M32	364.57
513.3257T	32A	6h	3P+N+E (5pin)	●	surface mnt socket	M32	443.92
513.6353T	63A	6h	2P+E (3pin)	●	surface mnt socket	M40	1 278.85
513.6356T	63A	6h	3P+E (4pin)	●	surface mnt socket	M40	1 298.40
513.6357T	63A	6h	3P+E (4pin)	●	surface mnt socket	M40	1 355.90
518.1653T	16A	6h	2P+E (3pin)	●	surface mnt socket	M20/25	414.02
518.1656T	16A	6h	3P+E (4pin)	●	surface mnt socket	M20/25	445.07
518.1657T	16A	6h	3P+N+E (5pin)	●	surface mnt socket	M20/25	518.67
518.3253T	32A	6h	2P+E (3pin)	●	surface mnt socket	M32	627.92
518.3256T	32A	6h	3P+E (4pin)	●	surface mnt socket	M32	617.57
518.32564T*	32A	3h	3P+E (4pin)	●	surface mnt socket	M32	617.57
518.3257T	32A	6h	3P+N+E (5pin)	●	surface mnt socket	M32	665.88
518.6353T	63A	6h	2P+E (3pin)	●	surface mnt socket	M40	1 378.90
518.6356T	63A	6h	3P+E (4pin)	●	surface mnt socket	M40	1 400.75
518.6357T	63A	6h	3P+N+E (5pin)	●	surface mnt socket	M40	1 462.85
518.12553T	125A	6h	2P+E (3pin)	●	surface mnt socket	M63	2 841.74
518.12556T	125A	6h	3P+E (4pin)	●	surface mnt socket	M63	3 074.05
518.12557T	125A	6h	3P+N+E (5pin)	●	surface mnt socket	M63	3 227.01
Surface mount switch sockets (no mechanical interlocked)							
513.1653TS	16A	6h	2P+E (3pin)	●	surface mnt socket	M25	611.82
513.1656TS	16A	6h	3P+E (4pin)	●	surface mnt socket	M25	645.18
513.1657TS	16A	6h	3P+N+E (5pin)	●	surface mnt socket	M25	664.73
513.3253TS	32A	6h	2P+E (3pin)	●	surface mnt socket	M32	694.63
513.3256TS	32A	6h	3P+E (4pin)	●	surface mnt socket	M32	725.68
513.3257TS	32A	6h	3P+N+E (5pin)	●	surface mnt socket	M32	757.88
518.1653TS	16A	6h	2P+E (3pin)	●	surface mnt socket	M25	694.63
518.1656TS	16A	6h	3P+E (4pin)	●	surface mnt socket	M25	725.68
518.1657TS	16A	6h	3P+N+E (5pin)	●	surface mnt socket	M25	757.88
518.3253TS	32A	6h	2P+E (3pin)	●	surface mnt socket	M32	778.58
518.3256TS	32A	6h	3P+E (4pin)	●	surface mnt socket	M32	809.63
518.3257TS	32A	6h	3P+N+E (5pin)	●	surface mnt socket	M32	841.83

* Refrigerated container (Reefer plugs)



221.163...



247.169...



452.166...



218.32364

Eureka series 16A/32A - 90° inlets

- Insulation voltage: 690 VAC
- Protection degree: IP44 and IP67
- Operating temperature: -25...+40°C (max operating temperature +60°C)
- Material: Thermoplastic
- Impact resistance: IK07 (0.5kg with a striking energy of 2J)
- Standards: IEC 6039-1 / EN 60309-3

type	rated current	(h) pos.	pin configuration	IP protection 44/54 66/7/9	description	flange size	price
Male plugs (90° cable inlet) 16A - 32A							
221.1633	16A	6h	2P+E (3pin)	●	90° ind male plug sleeve		174.81
221.1636	16A	6h	3P+E (4pin)	●	90° ind male plug sleeve		195.51
221.1637	16A	6h	3P+N+E (5pin)	●	90° ind male plug sleeve		226.56
221.3233	32A	6h	2P+E (3pin)	●	90° ind male plug sleeve		274.86
221.3236	32A	6h	3P+E (4pin)	●	90° ind male plug sleeve		293.26
221.3237	32A	6h	3P+N+E (5pin)	●	90° ind male plug sleeve		356.52
226.1633	16A	6h	2P+E (3pin)	●	90° ind male plug gland		224.26
226.1636	16A	6h	3P+E (4pin)	●	90° ind male plug gland		241.51
226.1637	16A	6h	3P+N+E (5pin)	●	90° ind male plug gland		276.01
226.3233	32A	6h	2P+E (3pin)	●	90° ind male plug gland		310.51
226.3236	32A	6h	P+E (4pin)	●	90° ind male plug gland		325.47
226.3237	32A	6h	3P+N+E (5pin)	●	90° ind male plug gland		397.92
Appliance inlets (90° inlet) 16A - 32A							
242.1693	16A	6h	2P+E (3pin)	●	90° appliance inlet 70 x 87		181.71
242.1696	16A	6h	3P+E (4pin)	●	90° appliance inlet 70 x 87		204.71
242.1697	16A	6h	3P+N+E (5pin)	●	90° appliance inlet 70 x 87		273.71
242.3293	32A	6h	2P+E (3pin)	●	90° appliance inlet 70 x 87		309.36
242.3296	32A	6h	3P+E (4pin)	●	90° appliance inlet 70 x 87		328.92
242.3297	32A	6h	3P+N+E (5pin)	●	90° appliance inlet 70 x 87		339.27
247.1693	16A	6h	2P+E (3pin)	●	90° appliance inlet 70 x 87		280.61
247.1696	16A	6h	3P+E (4pin)	●	90° appliance inlet 70 x 87		293.26
247.1697	16A	6h	3P+N+E (5pin)	●	90° appliance inlet 70 x 87		368.02
247.3293	32A	6h	2P+E (3pin)	●	90° appliance inlet 70 x 87		389.87
247.3296	32A	6h	3P+E (4pin)	●	90° appliance inlet 70 x 87		415.17
247.3297	32A	6h	3P+N+E (5pin)	●	90° appliance inlet 70 x 87		458.87
Sockets (90° outlet) 16A - 32A							
452.1663	16A	6h	2P+E (3pin)	●	90° female socket 70 x 87		225.41
452.1666	16A	6h	3P+E (4pin)	●	90° female socket 70 x 87		244.96
452.1667	16A	6h	3P+N+E (5pin)	●	90° female socket 70 x 87		339.27
452.3263	32A	6h	2P+E (3pin)	●	90° female socket 70 x 87		402.52
452.3266	32A	6h	3P+E (4pin)	●	90° female socket 70 x 87		412.87
452.3267	32A	6h	3P+N+E (5pin)	●	90° female socket 70 x 87		568.12
457.1663	16A	6h	2P+E (3pin)	●	90° female socket 70 x 87		373.77
457.1666	16A	6h	3P+E (4pin)	●	90° female socket 70 x 87		411.72
457.1667	16A	6h	3P+N+E (5pin)	●	90° female socket 70 x 87		508.32
457.3263	32A	6h	2P+E (3pin)	●	90° female socket 70 x 87		578.47
457.3266	32A	6h	3P+E (4pin)	●	90° female socket 70 x 87		580.77
457.3267	32A	6h	3P+N+E (5pin)	●	90° female socket 70 x 87		716.48
Container plugs and sockets 32A							

Resistance is a fundamental requirement in a harsh and exhausting environment like a terminal container where sun, humidity, saltiness and temperature changes put a strain on any product.

Scame offers a full range of plugs and socket outlets in 3h configuration for the supply of refrigerated containers: OPTIMA series plugs and sockets, flush or surface mounting interlocked socket in OMNIA series, ADVANCE2 series of interlocked socket outlets in thermoplastic material to offer maximum resistance to shocks and atmospheric and chemical agents.

- Refrigeration container (Reefer plugs and sockets)
- Earth pin (3h) position
- IP rating: IP67

218.32364	32A	3h	3P+E (4pin)	●	container straight male plug		270.26
318.32464	32A	3h	3P+E (4pin)	●	container straight connector		332.37
428.32664	32A	3h	3P+E (4pin)	●	p/mnt straight socket 75 x 75		391.02
418.32664	32A	3h	3P+E (4pin)	●	p/mnt angled socket 84 x 106		391.02
518.32564T	32A	3h	3P+E (4pin)	●	TOP surface mnt socket outlet		617.57
505.32864	32A	3h	3P+E (4pin)	●	Omnia surf switch/socket outlet		1 507.70
561.32864	32A	3h	3P+E (4pin)	●	Advance surf switch/socket outlet		1 684.81



500.168...



505.328...



561.328...



548.12587...

Industrial switched sockets (interlocked)

IEC 60309-1/-2

- Protection degree: IP44 and IP67 (non ageing elastomer seals)
- Operating temp: -25...+40°C (max operating temperature +60°C)
- Material: Thermoplastic (RAL 7035)
- Mechanical interlock: Only operates with plug inserted - cannot be removed with switch "ON"

type	rated current	(h) pos.	pin configuration	IP protection		description	price
				44/54	67/8/9		

OMNIA series - Switched sockets

(I-O)

(interlocked)

- Surface mounting: (flush mountable with surface box removed)
- Impact resistance: IK08 (1.7kg with a striking energy of 2J)

OMNIA Series 16A - 32A

(H)125 x (W)136 x (D)85 mm

500.1683	16A	6h	2P+E (3pin)	●	●	surface switch socket outlet	855.63
500.1686	16A	6h	3P+E (4pin)	●	●	surface switch socket outlet	929.23
500.1687	16A	6h	3P+N+E (5pin)	●	●	surface switch socket outlet	1 013.19
500.3283	32A	6h	2P+E (3pin)	●	●	surface switch socket outlet	1 021.24
500.3286	32A	6h	3P+E (4pin)	●	●	surface switch socket outlet	1 113.24
500.3287	32A	6h	3P+N+E (5pin)	●	●	surface switch socket outlet	1 246.64
505.1683	16A	6h	2P+E (3pin)	●	●	surface switch socket outlet	1 081.04
505.1686	16A	6h	3P+E (4pin)	●	●	surface switch socket outlet	1 181.09
505.1687	16A	6h	3P+N+E (5pin)	●	●	surface switch socket outlet	1 270.79
505.3283	32A	6h	2P+E (3pin)	●	●	surface switch socket outlet	1 409.95
505.3286	32A	6h	3P+E (4pin)	●	●	surface switch socket outlet	1 507.70
505.32864*	32A	3h	3P+E (4pin)	●	●	surface switch socket outlet	1 507.70
505.3287	32A	6h	3P+N+E (5pin)	●	●	surface switch socket outlet	1 651.46

OMNIA Series 63A (rectangular shape)

(H)275 x (W)136 x (D)186 mm

505.6383	63A	6h	2P+E (3pin)	●	●	surface switch socket outlet	2 563.44
505.6386	63A	6h	3P+E (4pin)	●	●	surface switch socket outlet	2 772.74
505.6387	63A	6h	3P+N+E (5pin)	●	●	surface switch socket outlet	3 064.85

Accessories for above Omnia series switched sockets

572.0310	base	surface base housing for 125 x 136 mm 16/32A switch sockets	110.41
654.0120	blank	plain blank cover for above surface box 5720310	152.96
572.0120	6 way	6 module consumer insert and cover for box 5720310	532.47
409.0428	cover	IP56 Omnia cover accepts Evolution domestic sockets	1 271.94
572.0200	wall box	flush mounting wall box for Omnia 16/32A switch socket outlets	194.36
572.0220	frame	flush frame (IP55) for above flush mounting box 5720200	87.41

Advance 2 series - Industrial switch sockets

(I-O)

(interlocked)

- Impact resistance: IK07 (500g with a striking energy of 2J)

16A/32A - compact version

(H)240 x (W)106 x (D)129 mm

560.1683	16A	6h	2P+E (3pin)	●	●	surface switch socket outlet	730.28
560.1686	16A	6h	3P+E (4pin)	●	●	surface switch socket outlet	803.88
560.1687	16A	6h	3P+N+E (5pin)	●	●	surface switch socket outlet	791.23
560.3283	32A	6h	2P+E (3pin)	●	●	surface switch socket outlet	855.63
560.3286	32A	6h	3P+E (4pin)	●	●	surface switch socket outlet	933.83
560.3287	32A	6h	3P+N+E (5pin)	●	●	surface switch socket outlet	871.73
561.1683	16A	6h	2P+E (3pin)	●	●	surface switch socket outlet	1 186.84
561.1686	16A	6h	3P+E (4pin)	●	●	surface switch socket outlet	1 299.55
561.16866	16A	7h	3P+E (4pin)	●	●	surface switch socket outlet	1 628.46
561.1687	16A	6h	3P+N+E (5pin)	●	●	surface switch socket outlet	1 504.25
561.16876	16A	7h	3P+N+E (5pin)	●	●	surface switch socket outlet	1 879.16
561.3283	32A	6h	2P+E (3pin)	●	●	surface switch socket outlet	1 511.15
561.3286	32A	6h	3P+E (4pin)	●	●	surface switch socket outlet	1 684.81
561.32864*	32A	3h	3P+E (4pin)	●	●	surface switch socket outlet	1 684.81
561.32866	32A	7h	3P+E (4pin)	●	●	surface switch socket outlet	2 104.57
561.3287	32A	6h	3P+N+E (5pin)	●	●	surface switch socket outlet	1 843.51
561.32876	32A	7h	3P+N+E (5pin)	●	●	surface switch socket outlet	2 304.68

63A - large version

(H)390 x (W)136 x (D)166-207 mm

561.6383	63A	6h	2P+E (3pin)	●	●	surface switch socket outlet	3 436.31
561.6386	63A	6h	3P+E (4pin)	●	●	surface switch socket outlet	3 706.57
561.63866	63A	7h	3P+E (4pin)	●	●	surface switch socket outlet	4 635.80
561.6387	63A	6h	3P+N+E (5pin)	●	●	surface switch socket outlet	4 096.43
561.63876	63A	7h	3P+N+E (5pin)	●	●	surface switch socket outlet	5 123.42

125A - large version

(H)460 x (W)212 x (D)217 mm

548.12586	125A	6h	3P+E (4pin)	●	●	surface switch socket outlet	14 202.95
548.12587	125A	6h	3P+N+E (5pin)	●	●	surface switch socket outlet	15 675.00

* Refrigerated container (Reefer plugs)



568.168...



LED indication



503.638...



590.FEM6303

type	rated current	(h) pos.	pin configuration	IP protection 44/54 67/8/9	description	price
Advance2 switch socket outlet						
ADVANCE2 is a complete range of industrial interlocked sockets available from 16 up to 125A making it ideal for applications in purely industrial environments.						
<ul style="list-style-type: none"> DIN rail facility for 6 x modular devices - MCB's, earth leakage, contactors With interlocked switch and 6 way distribution board 						
16/32A - switched socket						(H)410 x (W)136 x (D)163 mm
568.1683	16A	6h	2P+E (3pin)		● surface switch socket outlet	1 920.57
568.1686	16A	6h	3P+E (4pin)		● surface switch socket outlet	2 052.82
568.1687	16A	6h	3P+N+E (5pin)		● surface switch socket outlet	2 163.22
						(H)420 x (W)136 x (D)176 mm
568.3283	32A	6h	2P+E (3pin)		● surface switch socket outlet	2 359.88
568.3286	32A	6h	3P+E (4pin)		● surface switch socket outlet	2 499.03
568.3287	32A	6h	3P+N+E (5pin)		● surface switch socket outlet	2 714.09
63A - switched socket						(H)438 x (W)136 (D)182 mm
568.6383	63A	6h	2P+E (3pin)		● surface switch socket outlet	4 704.80
568.6386	63A	6h	3P+E (4pin)		● surface switch socket outlet	5 060.16
568.6387	63A	6h	3P+N+E (5pin)		● surface switch socket outlet	5 210.82
Advance-GRP "extra heavy duty" interlocked switch socket outlet 16 - 125A (O-II)						
Advance-GRP(Ex) series surface mounting interlocked socket outlets are designed to guarantee excellent mechanical resistance to impacts and chemical agents, even under extreme atmospheric and temperature conditions.						
<ul style="list-style-type: none"> Material: Thermosetting (halogen free) RAL 7037 Self-extinguishing: GW test: 960°C - UL94 V0 Impact resistance: IK10 (5kg with a striking energy of 20J) Ex classification: Atex code Ex II 2D LED indication: Correct supply and all phases present 						
16A/32A - extra heavy-duty						(H)260 x (W)130 x (D)170-185 mm
503.1683	16A	6h	2P+E (3pin)		● heavy duty switch socket outlet	4 250.54
503.1686	16A	6h	3P+E (4pin)		● heavy duty switch socket outlet	4 617.40
503.1687	16A	6h	3P+N+E (5pin)		● heavy duty switch socket outlet	5 016.46
503.3283	32A	6h	2P+E (3pin)		● heavy duty switch socket outlet	6 687.46
503.3286	32A	6h	3P+E (4pin)		● heavy duty switch socket outlet	7 255.58
503.3287	32A	6h	3P+N+E (5pin)		● heavy duty switch socket outlet	7 992.76
63A - extra heavy-duty						(H)380 x (W)170 x (D)225 mm
503.6386	63A	6h	3P+E (4pin)		● heavy duty switch socket outlet	10 331.93
503.6387	63A	6h	3P+N+E (5pin)		● heavy duty switch socket outlet	11 580.87
125A - extra heavy-duty						(H)575 x (W)280 x (D)253 mm
503.12586-01	125A	6h	3P+E (4pin)		● heavy duty switch socket outlet	23 541.24
503.12587-01	125A	6h	3P+N+E (5pin)		● heavy duty switch socket outlet	26 289.83
FR series - Enclosed switch disconnectors "Fire rated"						IP65
FR series is a range of fire rated switch disconnectors able to resist at a temperature of 400°C for a period of 120 minutes ensuring the operation of the smoke extraction systems as required by the EN 12101-3 Standard (2015).						
<ul style="list-style-type: none"> Protection degree: IP65 Operating ambient temp: -25...+ 60°C Colour: RAL 3020 Impact resistance: IK08 (20A...160A) Material: Continuous-Casting- Aluminium Alloy Locking mechanism: Padlockable handle in two positions (ON/OFF) Conformity of standards: <ul style="list-style-type: none"> BS EN 12101-3 (smoke and heat control system) EN 60947-3 (Low voltage switchgear and controlgear) EN 60529 (Degrees of protection provided by enclosure) 						
type	AC-21A ≤ 690V	AC-23A ≤ 415V	poles	description	dimensions (mm) (H) (W) (D)	price
590.FEM2003	20A	9kW	3	enclosed isolator switch	192 168 80	4 398.89
590.FEM3203	32A	15kW	3	enclosed isolator switch	192 168 80	5 750.18
590.FEM6303	63A	35kW	3	enclosed isolator switch	253 217 93	9 585.56
Note: Larger sizes (up to 630A) available on request.						



672.2012.1102



672.4032.1102



672.4316



672.1200



654.0420



654.0410

Domino series - Distribution boards (IP66)

- Protection degree: IP66
- Max. operating temperature: 60°C
- Material: Thermoplastic (RAL 7035)
- Standards: EN 62208 / EN 60670-24 / EN 61439-3
- Impact resistance: IK07 (500g with a striking energy of 2J)

type	no. DIN modules	description	dimensions (mm)			price
			(H)	(W)	(D)	

Domino series - Distribution boards

- Reversible hinged door (*hinged from left or right side*)
- Adjustable DIN rail depth (*can accept rail mounted MCCB's*)
- Knock-outs on all sides (*can be coupled to other enclosures using coupler glands*)
- Facility to accept earth and neutral terminals

672.2002	2	IP66 consumer unit / distribution board	135	76	102	332.37
672.2004	4	IP66 consumer unit / distribution board	190	112	106	443.92
672.2008	8	IP66 consumer unit / distribution board	190	184	106	603.77
672.2012.1102	12 (1 x 12)	IP66 consumer unit / distribution board	250	256	140	769.38
672.4024.1102	24 (2 x 12)	IP66 consumer unit / distribution board	400	256	140	1 359.35
672.2016.1102	16 (1 x 16)	IP66 consumer unit / distribution board	250	328	140	1 068.39
672.4032.1102	32 (2 x 16)	IP66 consumer unit / distribution board	400	328	140	1 721.61
672.5048.1102	48 (3 x 16)	IP66 consumer unit / distribution board	550	328	140	2 173.57

.1102 (supplied with mounted earth and neutral terminals)

Boards with additional blank component section (for mounting non modular devices)

672.3100	12 (1 x 12)	with blank section (H) 150 x (D) 115 mm	400	256	140	1 037.34
672.4116	16 (1 x 16)	with blank section (H) 150 x (D) 115 mm	400	328	140	1 122.44
672.5116	16 (1 x 16)	with blank section (H) 300 x (D) 115 mm	550	328	140	1 460.55

Boards with section to accommodate industrial sockets

type	no. DIN modules	sockets No.	flange size (mm)	dimensions (mm)			price
				(H)	(W)	(D)	
672.2300	8 (1 x 8)	board + 2 x 16A sockets	70 x 87	340	184	106	1 158.09
672.3300*	12 (1 x 12)	board + 2 x 16A sockets	70 x 87	400	256	140	1 510.00
672.3302	12 (1 x 12)	board + 1 x 63A sockets	100 x 110	400	256	140	1 510.00
672.4316*	16 (1 x 16)	board + 3 x 16A sockets	70 x 87	400	328	140	1 995.32
672.5616*	16 (1 x 16)	board + 6 x 16A sockets	70 x 87	550	328	140	2 660.04

To accommodate Omnia interlocked switch sockets

672.3200	12 (1 x 12)	board + 1 x 16/32A sw/socket	136 x 125	400	256	140	1 510.00
672.4216	16 (1 x 16)	board + 2 x 16/32A sw/socket	136 x 125	400	328	140	2 055.12
672.5316	16 (1 x 16)	2 x 16/32A + 1 x 63A sw/socket	136 x 125	550	328	140	2 731.34
672.5416	16 (1 x 16)	board + 4 x 16/32A sw/socket	136 x 125	550	328	140	2 756.64

Empty enclosures for Domino series boards

type	for boards	description	flange	dimensions (mm)			price
				(H)	(W)	(D)	
• Enclosures can be attached to boards (<i>or one another</i>) using coupler glands (<i>below</i>)							
672.1101	12 way	enclosure with blank cover	-	150	256	115	403.67
672.1301*	12 way	enclosure 2 x 16A sockets	70 x 87	150	256	115	430.12
<i>* With suitable adaption, can accommodate 32A socket (84 x 106 mm flange)</i>							
672.1100	16 way	enclosure with blank cover	-	150	328	115	529.02
672.1300*	16 way	enclosure 3 x 16A sockets	70 x 87	150	328	115	532.47
672.1200	16 way	enclosure 2 x 16/32A sw/socket	136 x 125	150	328	115	561.22

Accessories for Domino boards

654.0365	4 way	5 way insulated terminal block for boards				(IP20)	92.01
654.0363	8 way	10 way insulated terminal block for boards				(IP20)	98.91
654.0362	16 - 32	10 way insulated terminal block for boards				(IP20)	104.66
654.0360	12 - 48 way	additional 10 way insulated terminal block				(IP20)	83.96
654.0358	DIN rail mountable	insulated terminal block	vertical	5 x 10 + 5 x 16	mm ²		170.21
654.0359	DIN rail mountable	insulated terminal block	horizontal	5 x 10 + 5 x 16	mm ²		170.21
654.0400	4 module	blanking strip for boards				(sectionable ½ and 1 module)	16.57
654.0410	1 module	rail mount dummy module				(assists heat dissipation)	49.46
654.0420	½ module	rail mount dummy module				(assists heat dissipation)	51.76
654.0751	12 module	DIN rail kit				-	85.11

Coupler glands IP66 (to join two enclosures together)

805.3335	coupler gland PG21 for joining 12/24 way enclosures together	(ea)	22.20
805.3337	coupler gland PG36 for joining 16/32 way enclosures together	(ea)	55.21



(Excluding sockets & MCBs) MBOX2



(Excluding sockets & MCBs) MBOX3



(Excluding sockets & MCBs) MBOX5



610.3760



610.3700



606.3005-062

MBOX series - Distribution assemblies IP66 (EN 60670-1 / EN 61439-3 / EN 61439-4)

MBOX panels are made of engineering resin with high mechanical sturdiness suitable for outdoor installations with high impact resistance and excellent dimensional stability at high temperatures.

Numerous combinations of sockets ensure reliability to meet common installation requirements for construction sites, equipped areas, camping sites, harbours and outdoor areas in general.

- Incorporated fold-out carrying handle
- Wall, trestle, turret or pole mountable (*with additional accessories*)
- Incorporated emergency disconnect pushbutton RAL 7035
- Incorporated distribution board to accommodate modular devices MCBs, earth leakages

type	no. DIN modules	mountable accessories to be ordered separately		dimensions (mm)			price
		(H)	(W)	(D)			

MBOX series - Distribution assemblies

MBOX2 distribution assemblies (no front door)

- Supplied with 16 mm² 5 pole terminal box

656.0924-000	16 (2 x 8)	4 x16/32A	Omnia industrial switch sockets	365	332	290	10 161.72
656.0926-000	16 (2 x 8)	6 x16/32A	Optima industrial socket outlets	365	332	290	10 161.72

MBOX3 distribution assemblies (supplied with door for socket compartment)

- Supplied with door for socket compartment
- Incorporates extremely low consumption LED light connected to a daylight sensor (*for improved visibility at night or in areas with poor light*)

657.0936-000	39 (3 x 13)	6 x16/32A	Omnia industrial switch sockets	520	465	380	15 237.98
657.0938-000	39 (3 x 13)	9 x16/32A	Optima industrial socket outlets	520	465	380	15 237.98

MBOX5 distribution assemblies (supplied with door for socket compartment)

- Supplied with door for socket compartment
- Internal frame to accept 4 x Omnia switch sockets with facilities to mount an additional 8 surface
- Supplied with incoming terminal blocks (5 x 16 mm² + 5 x 35 mm²)
- Incorporates extremely low consumption LED light connected to a daylight sensor (*for improved visibility at night or in areas with poor light*)

658.0950-000	52 (4 x 13)	12 x16/32A	Omnia industrial switch sockets	670	775	400	21 632.18
--------------	-------------	------------	---------------------------------	-----	-----	-----	-----------

Accessories for MBOX distribution assemblies

			for enclosure		
654.0051	cable support kit (<i>to wind feeder cable on rear of enclosure</i>)		MBOX2		158.71
654.0024	wall mounting bracket for enclosures		MBOX2/3/5		185.16
655.46090	pole mounting bracket for enclosures		MBOX2		2 343.78
655.32090	pole mounting bracket for enclosures		MBOX3/5		2 171.27
657.0121	trestle metal support trestle for enclosures		MBOX3/5		8 502.22

Adapto series adaptors (from industrial IEC309 to multi and domestic sockets)

type	from ind. socket		to sockets	description	price
610.3700	16A	2P+E	2 x 16A	Italian socket	404.82
610.3720	16A	2P+E	1 x 16A	German (Schuko)	338.12
610.3760	16A	2P+E	1 x 16A	South African socket	426.67
600.1623	16A	2P+E	2 x 16A 2P+E	multi-way adaptor	805.03
600.1626	16A	3P+E	2 x 16A 3P+E	multi-way adaptor	905.08
600.1629	16A	3P+N+E	1 x 2P+E/1x 3P+E	multi-way adaptor	994.79
606.3005-062	16A	2P+E	3 x 16A 2P+E	appliance inlets	905.08
606.3005-063	16A	2P+E	3 x 16A 3P+E	appliance inlets	1 040.79

Covers to accommodate domestic sockets

- Replaces standard industrial sockets and Omnia switch sockets with domestic sockets

type	IP rating	description	ind socket flange	price
570.6428	IP66	cover with South African 16A domestic socket	70 x 87	529.02
409.0428	IP56	Omnia cover with S A 16A domestic socket	125 x 136	1 271.94
570.5052	IP66	cover accepts Evolution domestic sockets	70 x 87	162.16
654.0122	IP66	Omnia cover accepts Evolution domestic sockets	125 x 136	604.92

See page I-6 for available clip-in domestic socket modules for above covers



136.5121-303



136.5122-303



136.5123-303



136.5123-414



101.6303.G



101.6414.G



137.5012



137.5022



137.6111

Unibox series - Surface mounting

IP55

- Housing: Thermoplastic (RAL 7035) (grey)
- Impact resistance: IK06 (500g with a striking energy of 1J)
- Max. temperature: +60°C
- Standards: EN 60670-1

type	amps	poles	description	dimensions (mm)			price
				(H)	(W)	(D)	

Unibox series - Surface mounting

IP55

1 gang surface mount switches

136.5121-303	16A	1P	1-way surface mount switch	82	68	66	179.41
136.5121-302	20A	2P	1-way surface mount switch	82	68	66	273.71
136.5121-323	16A	1P	2-way surface mount switch	82	68	66	200.11
136.5121-333	16A	1P	bell-push (momentary action)	82	68	66	200.11

2 gang surface mount switches

136.5122-303	16A	2P	2 x 1-pole surface mount switch	82	68	66	273.71
136.5122-414	15A	2P+E	2-pole + earth socket only	82	68	66	339.27

3 gang surface mount switches

136.5123-303	16A	3P	3 x 1-pole surface mount switch	82	98	66	373.77
--------------	-----	----	---------------------------------	----	----	----	--------

Surface mount switch socket

136.5123-414	15A	2P+E	switch socket outlet	82	98	66	387.57
--------------	-----	------	----------------------	----	----	----	--------

Accessories for Unibox series

136.5121	1 gang	surface mount empty housing only (IP55)	82	68	66	118.46
136.5122	2 gang	surface mount empty housing only (IP55)	82	68	66	118.46
136.5123	3 gang	surface mount empty housing only (IP55)	82	98	66	178.26
136.001	-	external mount brackets for surface boxes			(10 pcs)	26.68
570.5052*	2 gang	panel mount housing for switches or sockets	82	68	-	162.16
570.6001*	2 gang	panel mnt housing (IP66 with plug inserted)	107	84	-	254.16
136.5023	3 gang	flush mnt housing for switches or sockets	82	98	-	194.36
875.4303	3 gang	wall box for flush mount empty housing	82	98	-	14.61

* Fits into housing for industrial sockets with 70 x 87 mm flange

Evolution series - Switches and sockets for above boxes

101.6303.G	16 A	1-pole	on/off switch for housings	(1 module)	65.56
101.6311.G	16 A	2-pole	changeover switch (I-O-II)	(1 module)	117.31
101.6403.G	16A	2P+E	Italian socket for housings	(1 module)	67.86
101.6414.G	15A	2P+E	SA socket for housings	(2 module)	178.26
101.6407.G	16A	2P+E	German socket for housings	(2 module)	134.56

DIN rail mount support for Evolution switches and sockets

654.0091	support	rail mnt support for above switches/sockets	(1 module)	21.63
654.0092	support	rail mnt support for above switches/sockets	(2 module)	25.42

Protecta series - Switches and sockets

IP66

- Housing: Thermoplastic (halogen free) RAL 7035 (grey)
- Mounting: Surface mount (can be flush mounted)
- Max temperature: +60°C
- Glow wire test: 850°C / IK07

1 gang surface mount switches

137.5012	20A	1P	surface mount switch	95	95	-	387.57
137.5462	20A	2P	surface mount switch	95	95	-	449.67
137.5212	20A	1P	2 way surface mnt switch	95	95	-	438.17
137.5311P	10A	1P	bell-push(momentary action)	95	95	-	317.41

2 gang surface mount switches

137.5022	20A	2P	surface mount switch	95	95	-	495.67
----------	-----	----	----------------------	----	----	---	--------

Switch socket outlet

137.6111	15A	2P+E	2 p + earth switch socket outlet	115	115	-	779.73
----------	-----	------	----------------------------------	-----	-----	---	--------

Accessories for above Protecta switches

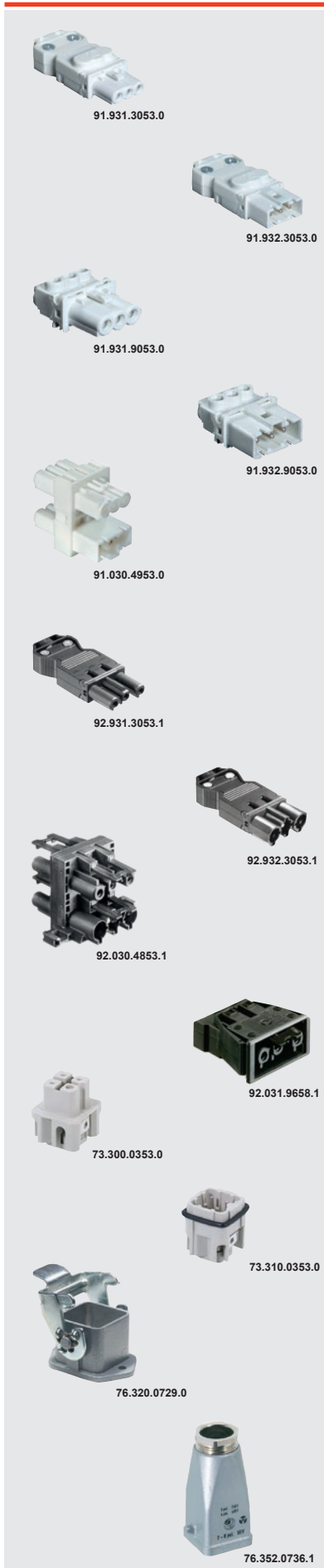
137.101	surface	surface mount back box for above switches	95	95	-	66.71
137.141	pole	pole mount back box for above switches	95	95	-	167.91
137.002	cover	IP66 cover accepts 2 x evolution (modules)	-	-	-	258.76
137.121	flush	flush mount frame kit for above switches	95	95	-	85.11
137.123	flush	flush mount frame kit for above sockets	115	115	-	104.66



RST connectors are an ideal solution to providing pluggable connections to products able to withstand severe conditions, the connectors easily replace conventional cable glands providing a flexible, pluggable solution.

- Rapid mounting through ease of handling
- UV-resistant (*Polymide - Halogen free*)
- Cross-sections up to 6 mm²
- Protection degree: IP65, IP66, IP67, IP68, IP69K
- Colour: Black

type	current (A)	No. poles	for cable (Ø mm)	wire (mm ²)	description	panel hole Ø	price
RST MINI Twistlock technology 250V							
RST 16i3 16A 3 pole							
46.031.4553.1	16A	3 pole	5 - 9.5	.25 - 2.5	in-line female connector	–	177.11
46.032.4553.1	16A	3 pole	5 - 9.5	.25 - 2.5	in-line male connector	–	177.11
46.031.5053.1	16A	3 pole	–	.25 - 2.5	panel mnt female connector	M16	146.06
46.032.5053.1	16A	3 pole	–	.25 - 2.5	panel mount male connector	M16	146.06
46.030.1253.1	16A	3 pole	–	–	1in / 2out distribution block	–	377.22
06.563.8953.1	16A	3 pole	protection cover for above 3 pole male connectors		–	–	43.71
06.563.8753.1	16A	3 pole	protection cover for above 3 pole female connectors		–	–	43.71
RST 16i5 16A 5 pole							
46.051.4553.1	16A	5 pole	5 - 9.5	.25 - 2.5	in-line female connector	–	286.36
46.052.4553.1	16A	5 pole	5 - 9.5	.25 - 2.5	in-line male connector	–	286.36
46.051.5053.1	16A	5 pole	–	.25 - 2.5	panel mnt female connector	M20	240.36
46.052.5053.1	16A	5 pole	–	.25 - 2.5	panel mount male connector	M20	240.36
46.050.1253.1	16A	5 pole	–	–	1in / 2out distribution block	–	492.22
06.562.5853.1	16A	3/5 pole	mounting base for above 3/5 pole distribution blocks		–	–	51.76
06.563.9353.1	16A	5 pole	protection cover for above 5 pole male connectors		–	–	47.16
06.563.9153.1	16A	5 pole	protection cover for above 5 pole female connectors		–	–	47.16
RST 20i3 20A 3 pole 250V							
96.031.4053.1	20A	3 pole	6 - 10	.75 - 6.0	in-line female connector	–	179.41
96.031.4153.1	20A	3 pole	10 - 14	.75 - 6.0	in-line female connector	–	179.41
96.032.4053.1	20A	3 pole	6 - 10	.75 - 6.0	in-line male connector	–	179.41
96.032.4153.1	20A	3 pole	10 - 14	.75 - 6.0	in-line male connector	–	179.41
96.031.5053.1	20A	3 pole	–	.75 - 6.0	panel mnt female connector	M25	150.66
96.032.5053.1	20A	3 pole	–	.75 - 6.0	panel mount male connector	M25	170.21
RST 20i5 20A 5 pole							
96.051.4153.1	20A	5 pole	10 - 14	.75 - 4.0	in-line female connector	–	296.71
96.052.4153.1	20A	5 pole	10 - 14	.75 - 4.0	in-line male connector	–	296.71
96.051.4353.1	20A	5 pole	10 - 14	.75 - 1.5	female splitter connector	–	653.23
96.051.5053.1	20A	5 pole	–	.75 - 4.0	panel mnt female connector	M25	251.86
96.052.5053.1	20A	5 pole	–	.75 - 4.0	panel mount male connector	M25	251.86
96.031.4253.1	20A	3/5 pole	6 - 10	.75 - 2.5	female splitter connector	–	450.82
96.031.4353.1	20A	3/5 pole	10 - 14	.75 - 2.5	female splitter connector	–	425.52
01.006.1553.1	20A	3/5 pole	mounting plate for 20A 3/5 pole splitter connectors		–	–	100.06
RST 25i3 32A (using 6 mm² cable) PV applications							
96.031.4554.3	32A	3 pole	10 - 14	.75 - 6.0	in-line female connector	–	221.96
96.032.4554.3	32A	3 pole	10 - 14	.75 - 6.0	in-line male connector	–	221.96
96.031.5054.3	32A	3 pole	–	.75 - 6.0	panel mnt female connector	M25	167.91
96.032.5054.3	32A	3 pole	–	.75 - 6.0	panel mount male connector	M25	167.91
RST 50i5 50A 5 pole power series							
97.051.4053.1	50A	5 pole	15 - 25	4.0 - 16.0	in-line female connector	M32	1 079.89
97.052.4053.1	50A	5 pole	15 - 25	4.0 - 16.0	in-line male connector	M32	1 079.89
97.051.5553.1	50A	5 pole	–	4.0 - 16.0	panel mnt female connector	M32	867.13
97.052.5553.1	50A	5 pole	–	4.0 - 16.0	panel mount male connector	M32	867.13
Accessories for RST20/25/50 connectors							
05.564.8653.1	20/32A	–	manual disconnect tool (<i>easy release button</i>)		–	–	15.42
05.568.8853.1	20/32A	–	spacer ring (<i>manually actuated</i>) for M25 connectors		M25	–	21.00
99.416.6205.2	20/32A	3 pole	protection cover for 20/32A 3 pole female connector		–	–	109.26
99.414.6205.2	20/32A	3 pole	protection cover for 20/32A 3 pole male connector		–	–	109.26
99.532.0000.7	20/32A	5 pole	protection cover for 20/32A 5 pole female connector		–	–	135.71
99.530.0000.7	20/32A	5 pole	protection cover for 20/32A 5 pole male connector		–	–	135.71
Z5.567.5653.0	50A	cover	protection cover for 50A male or female connectors		–	–	278.31



GST multipole connectors

Rated voltage: 250V Rated current: 16A
 Protection degree: IP20 Colour: White (black available on request)

- Quick, easy and reliable connection technology with Integrated locking device

type	current (A)	No. poles	for cable (Ø mm)	wire (mm ²)	description	panel hole Ø	price
------	-------------	-----------	------------------	-------------------------	-------------	--------------	-------

GST 15i3 (Gesis mini) connectors 16A/250V

In-line connectors (with strain relief)

screw connection

91.921.3053.0	16A	2 pole	5.5 - 8.5	0.5 - 1.5	female in-line connector		79.36
91.922.3053.0	16A	2 pole	5.5 - 8.5	0.5 - 1.5	male in-line connector		73.61
91.931.3053.0	16A	3 pole	5.5 - 8.5	0.5 - 1.5	female in-line connector		111.56
91.932.3053.0	16A	3 pole	5.5 - 8.5	0.5 - 1.5	male in-line connector		103.51
91.931.9053.0	16A	3 pole	–	0.5 - 1.5	flush female p/mnt connector		71.31
91.931.9153.0	16A	3 pole	–	0.5 - 1.6	protruding female p/mnt conn.		71.31
91.932.9053.0	16A	3 pole	–	0.5 - 1.5	flush male p/mnt connector		62.11
91.932.9153.0	16A	3 pole	–	0.5 - 1.6	protruding male p/mnt conn.		58.66

GST 18i3 (Gesis) connectors 16A/250V

In-line connectors (with strain relief)

screw connection

92.931.3053.0	16A	3 pole	6.5 - 10.5	0.75 - 2.5	female in-line connector		97.76
92.932.3053.0	16A	3 pole	6.5 - 10.5	0.75 - 2.5	male in-line connector		83.96

Panel mounting (snap-in) spring-loaded screwless connection

92.031.9658.0	16A	3 pole	–	0.75 - 2.5	female panel mount connector		64.41
92.032.9658.0	16A	3 pole	–	0.75 - 2.5	male panel mount connector		59.81

Accessories for GST connectors

91.030.6053.0	16A	3 pole			1 in / 2 out distribution unit for GST15i connectors		203.56
91.030.4953.0	16A	3 pole			1 in / 3 out distribution unit for GST15i connectors		232.31
91.030.5853.0	16A	3 pole			U-type intermediate coupling for GST 15i connectors		198.96
91.030.5953.0	16A	3 pole			in-line intermediate coupling for GST 15i connectors		103.51
92.030.4853.0	16A	3 pole			1 in / 3 out distribution unit for GST18i connectors		180.56
92.030.5958.0	16A	3 pole			in-line intermediate coupling for GST 18i connectors		50.61
05.587.3156.0	lock	–			locking device for in-line connectors		15.76
05.561.3653.0	cover	–			protection cover for GST18i female connectors		22.08

Revos MINI - industrial multipole connectors

Protection degree: IP 65 (when used with appropriate cable gland)

type	current (A)	No. poles	rated voltage	connect type	cable inlet	description	price
------	-------------	-----------	---------------	--------------	-------------	-------------	-------

- Set is made up with - contact inserts (male and female) - base - hood

Revos MINI 10A/400V

Contact inserts Screw connection - (cables 0.5 - 2.5 mm²)

73.310.0353.0	10A	3p + ⊥	400 V	screw	–	male insert - screw terminal	172.51
73.310.0453.0	10A	4p + ⊥	400 V	screw	–	male insert - screw terminal	227.71
73.300.0353.0	10A	3p + ⊥	400 V	screw	–	female insert - screw terminal	175.96
73.300.0453.0	10A	4p + ⊥	400 V	screw	–	female insert - screw terminal	248.41

Crimp connection - (crimp contacts to be ordered separately)

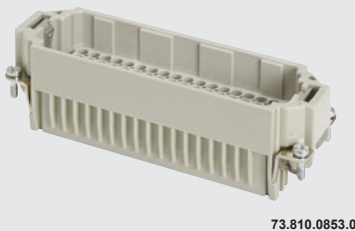
73.710.0753.0	10A	7p + ⊥	250 V	crimp	–	male insert - for crimp pins	72.46
73.710.0853.0	10A	8 pole	50 V	crimp	–	male insert - for crimp pins	73.61
05.544.1029.0	10A	–	250 V	crimp	.75 - 1.5 mm ²	male crimp contact pins	11.62
73.700.0753.0	10A	7p + ⊥	250 V	crimp	–	female insert - for crimp pins	69.01
73.700.0853.0	10A	8 pole	50 V	crimp	–	female insert - for crimp pins	70.16
02.124.1029.0	10A	–	250 V	crimp	.75 - 1.5 mm ²	female crimp contact pins	11.97

Bases with locking lever for hood connection

76.320.0729.0	metal	3/4/7/8		open	straight	base for contact inserts	152.96
76.321.0729.0	metal	3/4/7/8		open	90°	angled base for cont. inserts	240.36
76.320.0753.0	plastic	3/4/7/8		open	straight	base for contact inserts	105.81
76.321.0753.0	plastic	3/4/7/8		open	90°	angled base for cont. inserts	210.46

Hoods with threaded collar to accept M20 cable glands

76.352.0736.1	metal	3/4/7/8		M20	straight	hood for contact inserts	152.96
76.350.0736.1	metal	3/4/7/8		M20	90°	angled hood for cont. inserts	239.21
76.352.0760.1	plastic	3/4/7/8		M20	straight	hood for contact inserts	106.96
76.350.0760.1	plastic	3/4/7/8		M20	90°	angled hood for cont. inserts	121.91



Revos BASIC - Industrial multipole connectors

Heavy duty connectors for use in tough environment conditions. Used in the automotive industry, packaging, instrumentation, control and automation equipment.

They permit simple, time-saving installation of machinery and equipment, providing effective protection against mechanical impact, water and dust entry.

- Rated voltage: 690V
- Rated current: 10/16A
- Protection degree: *Supplied without gland (IP65 when used with appropriate cable gland)*

type	current (A)	No. poles	rated voltage	connect type	cable inlet	size	description	price
------	-------------	-----------	---------------	--------------	-------------	------	-------------	-------

Contact inserts Fit into all revos bases and hoods to make up a complete connector.

Revos BASIC Standard contact inserts with screw termination - 6/10/16/24/32/48 pole + earth

- Connector set is made up with - contact inserts (*male and female*) - base - hood

Screw terminal (*with wire protection*) (for cables 0.5 - 2.5 mm²)

70.310.0640.0	16A	6p+ $\frac{1}{2}$	690V	screw	-	6	male insert - screw term.	169.06
70.310.1040.0	16A	10p+ $\frac{1}{2}$	690V	screw	-	10	male insert - screw term.	201.26
70.310.1640.0	16A	16p+ $\frac{1}{2}$	690V	screw	-	16	male insert - screw term.	262.21
70.310.2440.0	16A	24p+ $\frac{1}{2}$	690V	screw	-	24	male insert - screw term.	338.12
70.310.3253.0	16A	32p+ $\frac{1}{2}$	690V	screw	-	32	male insert - screw term.	586.52
70.310.4840.0	16A	48p+ $\frac{1}{2}$	690V	screw	-	48	male insert - screw term.	670.48
70.300.0640.0	16A	6p+ $\frac{1}{2}$	690V	screw	-	6	female insert - screw term.	172.51
70.300.1040.0	16A	10p+ $\frac{1}{2}$	690V	screw	-	10	female insert - screw term.	204.71
70.300.1640.0	16A	16p+ $\frac{1}{2}$	690V	screw	-	16	female insert - screw term.	265.66
70.300.2440.0	16A	24p+ $\frac{1}{2}$	690V	screw	-	24	female insert - screw term.	343.87
70.300.3253.0	16A	32p+ $\frac{1}{2}$	690V	screw	-	32	female insert - screw term.	593.42
70.300.4840.0	16A	48p+ $\frac{1}{2}$	690V	screw	-	48	female insert - screw term.	676.23

Push-in termination contact inserts

New push-in technology allows flexible conductors with ferrules to be simply and quickly connected without the use of tools. Simply push-in the wire conductor for a high contact quality, reliable, gas-tight, vibration proof connection.

- Extremely quick connection time - (*cables are simply withdrawn by pressing a release button*)

70.415.0653.0	16A	6p+ $\frac{1}{2}$	690V	push-in	-	6	male insert - push-in term.	194.36
70.415.1053.0	16A	10p+ $\frac{1}{2}$	690V	push-in	-	10	male insert - push-in term.	249.56
70.415.1653.0	16A	16p+ $\frac{1}{2}$	690V	push-in	-	16	male insert - push-in term.	303.61
70.415.2453.0	16A	24p+ $\frac{1}{2}$	690V	push-in	-	24	male insert - push-in term.	439.32
70.405.0653.0	16A	6p+ $\frac{1}{2}$	690V	push-in	-	6	female insert - push-in term.	201.26
70.405.1053.0	16A	10p+ $\frac{1}{2}$	690V	push-in	-	10	female insert - push-in term.	255.31
70.405.1653.0	16A	16p+ $\frac{1}{2}$	690V	push-in	-	16	female insert - push-in term.	318.56
70.405.2453.0	16A	24p+ $\frac{1}{2}$	690V	push-in	-	24	female insert - push-in term.	465.77

Revos DD High density contact inserts for crimp contacts - 24/42/72/108 poles

High contact density in the most compact housing. Connection is made with proven turned crimp contacts.

- Crimp connection - (*crimp contact pins to be ordered separately - see below*)
- Connector set is made up with - contact inserts and crimp contact pins (*male and female*) - base - hood

73.810.2453.0	10A	24p+ $\frac{1}{2}$	250V	crimp	-	6	male insert - for crimp pins	318.56
73.810.4253.0	10A	42p+ $\frac{1}{2}$	250V	crimp	-	10	male insert - for crimp pins	371.47
73.810.7253.0	10A	72p+ $\frac{1}{2}$	250V	crimp	-	16	male insert - for crimp pins	380.67
73.810.0853.0	10A	108p+ $\frac{1}{2}$	250V	crimp	-	24	male insert - for crimp pins	400.22
73.800.2453.0	10A	24p+ $\frac{1}{2}$	250V	crimp	-	6	female insert - for crimp pins	319.72
73.800.4253.0	10A	42p+ $\frac{1}{2}$	250V	crimp	-	10	female insert - for crimp pins	373.77
73.800.7253.0	10A	72p+ $\frac{1}{2}$	250V	crimp	-	16	female insert - for crimp pins	381.82
73.800.0853.0	10A	108p+ $\frac{1}{2}$	250V	crimp	-	24	female insert - for crimp pins	403.67

Crimp contacts for Revos DD contact inserts (cables 0.75 - 1 mm²)

05.544.4329.8	10A	-	250 V	0.75 - 1 mm ²	male crimp contact pins	12.09
02.125.4329.8	10A	-	250 V	0.75 - 1 mm ²	female crimp contact pins	13.34
05.544.4429.8	10A	-	250 V	1.5 mm ²	male crimp contact pins	12.09
02.125.4429.8	10A	-	250 V	1.5 mm ²	female crimp contact pins	13.34

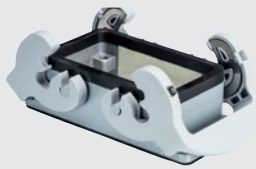
Accessories for contact inserts

95.101.0800.0	tool	-	-	crimp	-	crimping tool for crimp contact pins	5 758.24
05.502.2100.0	die	-	-	crimp	-	die set for crimping contact pins	9 807.51
05.502.3100.0	pos.	-	-	crimp	-	contact pin positioner for crimping tool	5 944.54
05.502.0710.0	tool	-	-	-	-	extraction tool for removing crimp contact pins from contact inserts	2 218.42

continued... Revos - Industrial multipole connectors

• Set is made up with - contact inserts (*male and female*) - base - hood

type	locking lever	gland entry	cable inlet	size	description	price
Bases (housings)						<i>(diecast aluminium)</i>
Panel mount (open bottom base - no cover)						
Single locking lever						
70.320.0628.0	single	open	straight	6	bulkhead mounting base	295.56
71.320.1028.0	single	open	straight	10	bulkhead mounting base	387.57
71.320.1628.0	single	open	straight	16	bulkhead mounting base	405.97
71.320.2428.0	single	open	straight	24	bulkhead mounting base	454.27
70.320.4828.0	single	open	straight	48	bulkhead mounting base	1 535.30
Double locking lever						
70.320.1028.0	double	open	straight	10	bulkhead mounting base	423.22
70.320.1628.0	double	open	straight	16	bulkhead mounting base	438.17
70.320.2428.0	double	open	straight	24	bulkhead mounting base	484.17
70.320.3228.0	double	open	straight	32	bulkhead mounting base	883.23
Surface mount (closed bottom base) metric threaded side cable gland entry						
Single locking lever						
70.331.0635.1	single	M20	side	6	side entry surface mount base	427.82
71.331.1035.1	single	M20	side	10	side entry surface mount base	530.17
71.331.1635.1	single	M25	side	16	side entry surface mount base	541.67
71.331.2435.1	single	M25	side	24	side entry surface mount base	610.67
70.344.4835.1	single	M40	side	48	side entry surface mount base	4 117.13
Double locking lever						
70.331.1035.1	double	M20	side	10	side entry surface mount base	563.52
70.331.1635.1	double	M25	side	16	side entry surface mount base	572.72
70.331.2435.1	double	M25	side	24	side entry surface mount base	638.27
Hoods (with studs to receive locking lever on bases)						<i>(diecast aluminium)</i>
Lateral cable entry (side entry) metric threaded cable gland entry						
Single locking lever						
70.350.0635.1	single	M20	side	6	lateral cable gland entry hood	235.76
71.350.1035.1	single	M20	side	10	lateral cable gland entry hood	323.17
71.350.1635.1	single	M25	side	16	lateral cable gland entry hood	324.32
71.350.2435.1	single	M25	side	24	lateral cable gland entry hood	377.22
70.350.4835.1	single	M32	side	48	lateral cable gland entry hood	1 697.46
Double locking lever						
70.350.1035.1	double	M20	side	10	lateral cable gland entry hood	323.17
70.350.1635.1	double	M25	side	16	lateral cable gland entry hood	324.32
70.350.2435.1	double	M25	side	24	lateral cable gland entry hood	377.22
70.350.3235.1	double	M32	side	32	lateral cable gland entry hood	1 161.54
Top cable entry metric threaded cable gland entry						
Single locking lever						
70.352.0635.1	single	M20	top	6	top cable gland entry hood	235.76
71.352.1035.1	single	M20	top	10	top cable gland entry hood	323.17
71.352.1635.1	single	M25	top	16	top cable gland entry hood	324.32
71.352.2435.1	single	M25	top	24	top cable gland entry hood	377.22
70.352.4835.1	single	M32	top	48	top cable gland entry hood	1 697.46
Double locking lever						
70.352.1035.1	double	M20	top	10	top cable gland entry hood	323.17
70.352.1635.1	double	M25	top	16	top cable gland entry hood	324.32
70.352.2435.1	double	M25	top	24	top cable gland entry hood	377.22
70.352.3235.1	double	M32	top	32	top cable gland entry hood	1 161.54
With locking levers (for in-line cable-to-cable connection)						
70.372.0635.1	single	M20	top	6	locking levers for cable to cable	336.97
71.372.1035.1	single	M20	top	10	locking levers for cable to cable	457.72
71.372.1635.1	single	M25	top	16	locking levers for cable to cable	494.52
71.372.2435.1	single	M25	top	24	locking levers for cable to cable	654.38



70.320.1028.0



70.331.1035.1



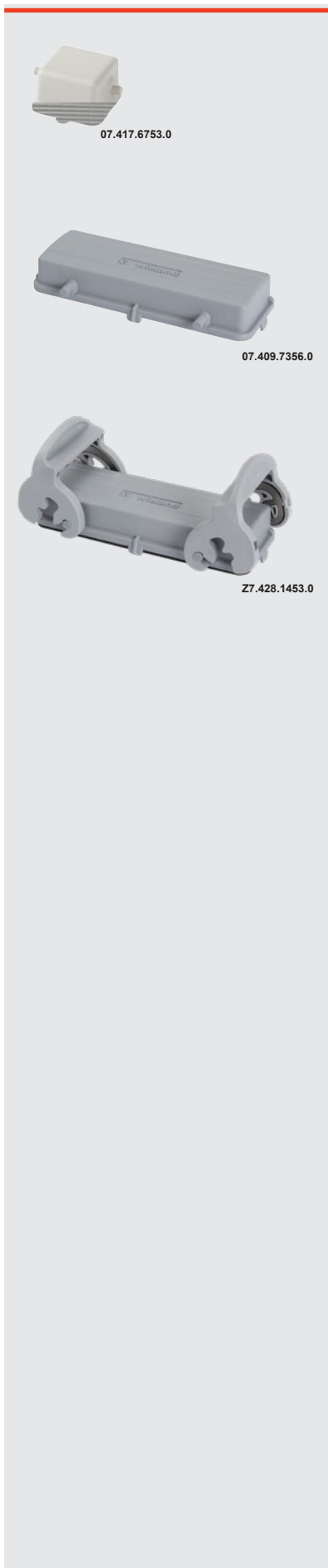
70.350.1035.1
(excluding gland)



70.352.1035.1
(excluding gland)



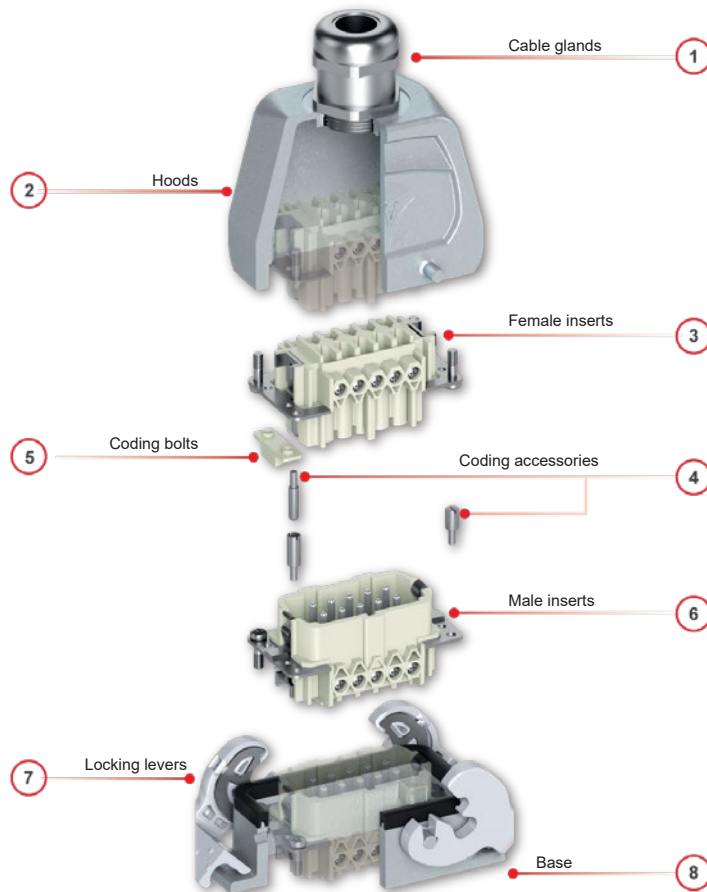
70.372.0635.1



Protective covers for Revos housings

type	size	locking lever	for	gasket	description	price
Covers without locking levers for bases						
07.417.6753.0	mini	single	male	no	protection cover for bases	36.81
07.409.7056.0	6	single	base	no	protection cover for bases	70.16
07.428.5553.0	10	single	base	no	protection cover for bases	123.06
07.428.5653.0	16	single	base	no	protection cover for bases	138.01
07.428.5753.0	24	single	base	no	protection cover for bases	158.71
07.409.7156.0	10	double	base	no	protection cover for bases	80.51
07.409.7256.0	16	double	base	no	protection cover for bases	89.71
07.409.7356.0	24	double	base	no	protection cover for bases	103.51
Z7.419.6228.0	32	double	base	no	protection cover for bases	451.97
Covers with locking levers for hoods						
07.417.6853.0	mini	single	female	yes	protection cover for hoods	47.16
Z7.428.1153.0	6	single	hood	yes	protection cover for hoods	308.21
Z7.428.5553.0	10	single	hood	yes	protection cover for hoods	369.17
Z7.428.5653.0	16	single	hood	yes	protection cover for hoods	371.47
Z7.428.5753.0	24	single	hood	yes	protection cover for hoods	427.82
Z7.428.1253.0	10	double	hood	yes	protection cover for hoods	369.17
Z7.428.1353.0	16	double	hood	yes	protection cover for hoods	371.47
Z7.428.1453.0	24	double	hood	yes	protection cover for hoods	427.82
Z7.419.6128.0	32	double	hood	yes	protection cover for hoods	693.48

General configuration of a **Revos** industrial multipole connector





PVBN101A-F2-M



PVBN101A-F2-F



SY-CP4A-M



SY-CP4A-F



MTT2AB



MTHP46-M



MTHP46-F



YS-C005



TB006

Photovoltaic connectors

Solar PV connectors are manufactured in high quality materials offering extremely high impact strength and chemical resistance with excellent UV and weather properties guaranteeing long-term stability and reliability, lower contact resistance and higher current transfer capability ensuring high product efficiency.

- TUV approved and quick and easy to install
- Stable connection and Reducing maintenance cost
- Protection class IP67/IP68 suitable for harsh outdoor environments

type	for cable mm ²	DC Volts IEC 62852	Amps	cable outer dia (mm)	male	female	description	price
------	---------------------------	--------------------	------	----------------------	------	--------	-------------	-------

PVBN series - In-line connectors 1500V IP68

Rated voltage: IEC1500V / UL 2000V
 Ambient temperature: -40°C...+90°C
 Protection degree: IP68 (IEC 60529)
 Rated Impulse Voltage: 16 kV
 Contact/Insulation material: Tin plated Copper/PC
 Locking system: NEC locking type (requires a tool to open connector)
 Fire protection: UL94-V 0
 Certification: IEC 62852; UL 6703

- Supplied individually - complete with insulated housing and open crimp contacts

PVBN101A-F2-M	4.0/6.0	1500 V	35A	5.6...6.9	•		male solar coupler	18.06
PVBN101A-F2-F	4.0/6.0	1500 V	35A	5.6...6.9		•	female solar coupler	18.06

SY-CP series - Panel mount connectors 1000V (mounts through M12 panel hole)

Rated voltage: IEC 1000V / UL 600V
 Ambient temperature: -40°C...+90°C
 Protection degree: IP68 (IEC 60529)
 Contact material: Tin plated copper
 Fire protection: UL94-V0
 Certification: IEC 62852; UL 6703

- Supplied individually - complete with insulated housing and open crimp contacts

SY-CP4A-M	4.0/6.0	1000 V	30A	5.6...6.9	•		male p/mount connector	19.56
SY-CP4A-F	4.0/6.0	1000 V	30A	5.6...6.9		•	female p/mnt connector	19.56

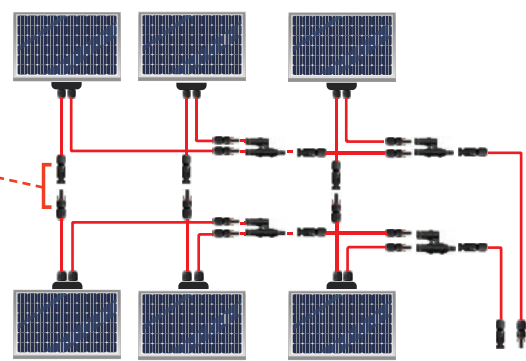
MTT series - T-branch connectors 1500V

MTT series branch connectors are suitable for solar cable 2.5 mm², 4 mm² and 6 mm² in solar connection project. Connecting solar panels in series or parallel, quickly and reliable connection of the solar cables to the photovoltaic system (solar panels, converters).

MTT2AB	branch	1500 V	30A	socket	2	1	socket branch connector	180.56
	branch	1500 V	30A	plug	1	2		

Tools and accessories for above connectors

MTHP46-M	4.0/6.0	1500 V	open end male crimping contact pins only	(ea)	6.79
MTHP46-F	4.0/6.0	1500 V	open end female crimping contact pins only	(ea)	6.79
YS-C005	sealing caps for PV connectors			(male + female pair)	21.29
THB510	open end universal spanner and unlocking tool			(male + female pair)	77.06
TB006	PV connector set in carrying case comprising:				2 168.97
	- PV crimping tool for 2.5/4/6 mm ² cables				
	- Wire cutter, wire stripper for 2.5/4/6 mm ² cables				
	- Pair open end universal spanners with unlocking too				





78176-01



78220-01



78299-00



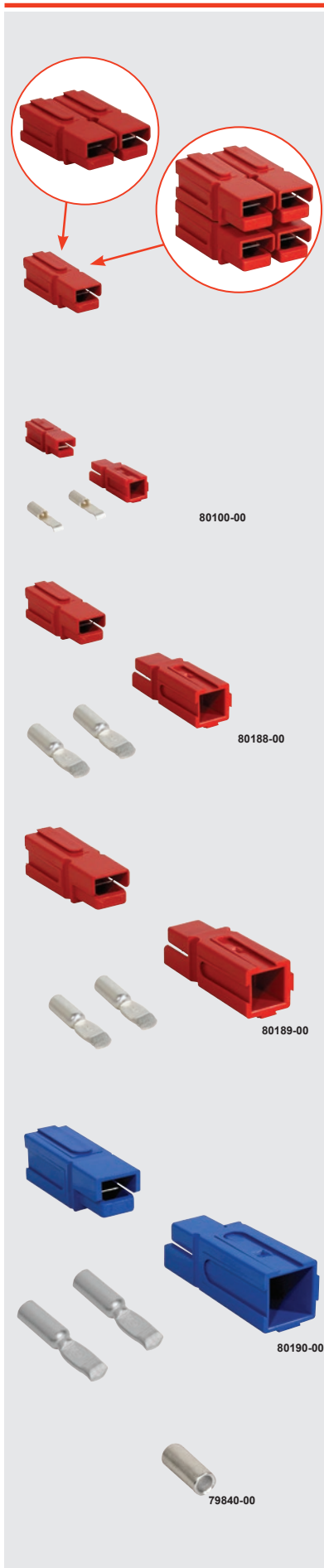
Flat blade connectors

REMA® flat blade connector offer a cost effective, quick-disconnect DC power connector solution. Available in different colours used to differentiate the voltage types, ensuring compatibility of properly configured mating connectors according to their respective voltage.

General features:

- Housing constructed of glass fibre reinforced material for extreme durability and resistance to battery acid
- Genderless housing design (*same unit reversed plugs into opposite*)
- REMA® engineered contacts made of high grade electrolyte copper, silver plated for corrosion protection
- Different contacts with sizes epitomised for metric and AWG cable dimensions
- CE and UL 1977 certified component meets or exceeds EN 1175-1 industry standards
- In compliance with machinery directive 2006/42 EG and therefore with "CE" marking
- Accepts REMA® strain relief clamps and handles for easy intuitive assembly

type	current (A)	colour		cable connection AWG	eq. mm ²	description	price
SR 50 50A connector (H) 48 x (W) 36.5 x (D) 15.9 mm							
78176-01	50A	■ red	red	AWG 8	10 mm ²	heavy duty 2 pole connector	124.21
78184-00	50A	■ red	red	AWG 6	16 mm ²	heavy duty 2 pole connector	121.91
78180-02	50A	■ grey	grey	AWG 8	10 mm ²	heavy duty 2 pole connector	124.21
78180-00	50A	■ grey	grey	AWG 6	16 mm ²	heavy duty 2 pole connector	121.91
78181-05	50A	■ black	black	AWG 8	10 mm ²	heavy duty 2 pole connector	124.21
78181-00	50A	■ black	black	AWG 6	16 mm ²	heavy duty 2 pole connector	121.91
SR 175 175A connector (H) 79.4 x (W) 55.6 x (D) 25.4 mm							
78234-00	175A	■ red	red	AWG 4	25 mm ²	heavy duty 2 pole connector	303.61
78235-00	175A	■ red	red	AWG 2	35 mm ²	heavy duty 2 pole connector	297.86
78236-00	175A	■ red	red	AWG 0	50 mm ²	heavy duty 2 pole connector	284.06
78220-01	175A	■ grey	grey	AWG 4	25 mm ²	heavy duty 2 pole connector	303.61
78220-02	175A	■ grey	grey	AWG 2	35 mm ²	heavy duty 2 pole connector	297.86
78220-00	175A	■ grey	grey	AWG 0	50 mm ²	heavy duty 2 pole connector	284.06
78224-01	175A	■ blue	blue	AWG 4	25 mm ²	heavy duty 2 pole connector	303.61
78224-02	175A	■ blue	blue	AWG 2	35 mm ²	heavy duty 2 pole connector	297.86
78224-00	175A	■ blue	blue	AWG 0	50 mm ²	heavy duty 2 pole connector	284.06
Accessories for SR 175 (above)							
78290-00	-	■ grey	grey	-	-	handle for SR 175 connectors	136.86
78291-00	-	■ red	red	-	-	handle for SR 175 connectors	136.86
78010-00	-	■ grey	grey	-	-	cable clamp for SR 175	213.91
SR 350 350A Connector (H) 108 x (W) 69.8 x (D) 33.3 mm							
78307-00	350A	■ red	red	AWG 0	50 mm ²	heavy duty 2 pole connector	543.97
78308-00	350A	■ red	red	AWG 00	70 mm ²	heavy duty 2 pole connector	535.92
78309-00	350A	■ red	red	AWG 000	95 mm ²	heavy duty 2 pole connector	552.02
78299-00	350A	■ grey	grey	AWG 0	50 mm ²	heavy duty 2 pole connector	543.97
78300-00	350A	■ grey	grey	AWG 00	70 mm ²	heavy duty 2 pole connector	535.92
78301-00	350A	■ grey	grey	AWG 000	95 mm ²	heavy duty 2 pole connector	552.02
78303-00	350A	■ blue	blue	AWG 0	50 mm ²	heavy duty 2 pole connector	543.97
78304-00	350A	■ blue	blue	AWG 00	70 mm ²	heavy duty 2 pole connector	535.92
78304-01	350A	■ blue	blue	AWG 000	95 mm ²	heavy duty 2 pole connector	552.02
Accessories for SR350 (above)							
78297-00	-	■ grey	grey	-	-	handle for SR 350 connectors	193.21
78298-00	-	■ red	red	-	-	handle for SR 350 connectors	193.21
78011-00	-	■ grey	grey	-	-	cable clamp for SR 350	650.93
Reduction bushings							
				from	to		
79840-00	reduction bushing			AWG 6	6 mm ²	cable reducing bushing	18.63
79844-00	reduction bushing			AWG 2	16 mm ²	cable reducing bushing	42.56
79846-00	reduction bushing			AWG 0	25 mm ²	cable reducing bushing	37.96
79847-00	reduction bushing			AWG 0	35 mm ²	cable reducing bushing	37.96
<i>Recommended colour voltage coding: Yellow: 12V - red: 24V - grey: 36V - blue: 48V</i>							



Flat blade connectors (single pole)

REMA® flat blade contact connectors offer a cost effective, quick-disconnect power connector solution. Available in different colours used to differentiate the voltage types, ensuring compatibility of properly configured mating connectors according to their respective voltage.

General Features

- Interlocking facility permitting multi-pole connections (2P, 3P, 4P..) in a flat horizontal or square format
- Constructed of glass fibre reinforced material for extreme durability and resistance to battery acid
- Genderless housing design (*same unit reversed plugs into opposite*)
- REMA® engineered contacts made of high grade electrolyte copper, silver plated for corrosion protection
- Different contacts with sizes optimised for metric and AWG cable dimensions
- CE and UL 1977 certified component meets or exceeds EN 1175-1 industry standards
- In compliance with machinery directive 2006/42 EG and therefore with "CE" marking

type	current (A)	colour	cable connection		description	pack qty	price (ea)
			AWG	eq. mm ²			
MC30		30A connector			<i>(H) 41.3 x (W) 7.9 x (D) 7.9 mm</i>		
80100-00	30A	■ red	AWG 12	2.5/4 mm ²	single pole connector	100	26.80
80100-02	30A	■ black	AWG 12	2.5/4 mm ²	single pole connector	100	26.80
80100-01	30A	□ white	AWG 12	2.5/4 mm ²	single pole connector	100	22.32
80100-04	30A	■ blue	AWG 12	2.5/4 mm ²	single pole connector	100	22.32
MC75		75A connector			<i>(H) 81.4 x (W) 15.9 x (D) 15.9 mm</i>		
80188-00	75A	■ red	AWG 6	16 mm ²	single pole connector	50	72.46
80188-02	75A	■ black	AWG 6	16 mm ²	single pole connector	50	72.46
80188-04	75A	□ white	AWG 6	16 mm ²	single pole connector	50	58.66
80188-06	75A	■ green	AWG 6	16 mm ²	single pole connector	50	72.46
80188-08	75A	■ blue	AWG 6	16 mm ²	single pole connector	50	72.46
MC120		120A connector			<i>(H) 117.5 x (W) 22.2 x (D) 22.2 mm</i>		
80189-00	120A	■ red	AWG 2	35 mm ²	single pole connector	25	182.86
80189-01	120A	■ black	AWG 2	35 mm ²	single pole connector	25	182.86
80189-02	120A	□ white	AWG 2	35 mm ²	single pole connector	25	148.36
80189-03	120A	■ green	AWG 2	35 mm ²	single pole connector	25	182.86
80191-00	120A	■ blue	AWG 2	35 mm ²	single pole connector	25	182.86
MC180		180A connector			<i>(H) 139.7 x (W) 28.6 x (D) 28.6 mm</i>		
80190-01	180A	■ red	AWG 0	50 mm ²	single pole connector	25	211.61
80190-02	180A	■ black	AWG 0	50 mm ²	single pole connector	25	211.61
80190-03	180A	□ white	AWG 0	50 mm ²	single pole connector	25	171.36
80190-04	180A	■ green	AWG 0	50 mm ²	single pole connector	25	211.61
80190-00	180A	■ blue	AWG 0	50 mm ²	single pole connector	25	211.61

Reduction bushings

		from	to			
79840-00	reduction bushing	AWG 6	6 mm ²	cable reducing bushing	ea	18.63
79844-00	reduction bushing	AWG 2	16 mm ²	cable reducing bushing	ea	42.56
79846-00	reduction bushing	AWG 0	25 mm ²	cable reducing bushing	ea	37.96
79847-00	reduction bushing	AWG 0	35 mm ²	cable reducing bushing	ea	37.96

Recommended colour voltage coding:
 Red: 24V - blue: 48V - green: 72V



RELETEK

Klemsan®

