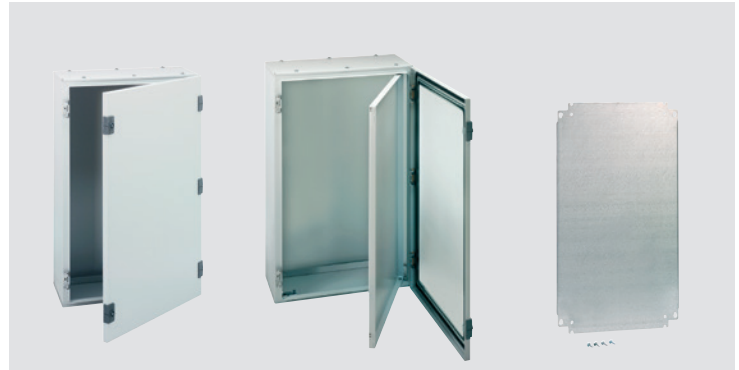


IP65  
 Colour: RAL 7035 (light grey)  
 Surface mounting  
 Sheet steel 15/10 thick

Chassis supplied separately

CEI EN 60439-1



Dimensions (mm)			Modular		Enclosures		Chassis Plate
H	W	D	Height (mm)	Rows 150 mm (H)	Sheet metal	Polyester	
300	250	160	–	–	FL102A	–	FL402A
350	300	160	300	2	FL104A	FL204B	FL404A
500	300	200	450	3	FL110A	FL209B	FL407A
500	400	200	450	3	FL112A	FL213B	FL408A
650	400	200	600	4	FL117A	FL216B	FL412A
650	500	250	600	4	FL120A	FL221B	FL413A
800	600	300	750	5	FL124A	FL229B	FL415A
950	800	300	900	6	FL128A	–	FL417A
1250	800	300	1200	8	FL130A	–	FL419A



**Sheet metal enclosures (surface mounting) (IP65), colour: RAL 7035 (light grey)**

- IP65 protection, insulation class I (*powder-coated epoxy polyester*)
- Front door with foamed gasket opening 140°, hinged left or right
- Interior kits for conversion to distribution facility (*for mounting MCBs and modular products*)
- Full-sized top and bottom gland plates (*enclosures can be mounted on top of each other*)

type	protection	description	dimensions (mm)		
			(H)	(W)	(D)
<b>FL102A</b>	IP65	surface mount sheet metal enclosure	300	250	160
<b>FL104A</b>	IP65	surface mount sheet metal enclosure	350	300	160
<b>FL110A</b>	IP65	surface mount sheet metal enclosure	500	300	200
<b>FL112A</b>	IP65	surface mount sheet metal enclosure	500	400	200
<b>FL117A</b>	IP65	surface mount sheet metal enclosure	650	400	200
<b>FL120A</b>	IP65	surface mount sheet metal enclosure	650	500	250
<b>FL124A</b>	IP65	surface mount sheet metal enclosure	800	600	300
<b>FL128AEM</b>	IP65	surface mount sheet metal enclosure	950	800	300
<b>FL130AEM</b>	IP65	surface mount sheet metal enclosure	1250	800	300

\* Above enclosures with transparent door (add suffix T to part no.)

**Polyester enclosures (surface mounting) (IP65), colour: RAL 7035 (light grey)**

- IP65 protection, insulation class II
- Waterproof hood, top and bottom (*incorporated*)
- Front door with foamed gasket opening 180°, hinged left or right

<b>FL204B</b>	IP65	surface mount polyester enclosure	350	300	160
<b>FL209B</b>	IP65	surface mount polyester enclosure	500	300	200
<b>FL213B</b>	IP65	surface mount polyester enclosure	500	400	200
<b>FL216B</b>	IP65	surface mount polyester enclosure	650	400	200
<b>FL221B</b>	IP65	surface mount polyester enclosure	650	500	250
<b>FL229B</b>	IP65	surface mount polyester enclosure	800	600	300

**Chassis plates**

<b>FL402A</b>	internal sheetmetal chassis plate for enclosure	FL102
<b>FL404A</b>	internal sheetmetal chassis plate for enclosure	FL104/204
<b>FL407A</b>	internal sheetmetal chassis plate for enclosure	FL110/209
<b>FL408A</b>	internal sheetmetal chassis plate for enclosure	FL112/213
<b>FL412A</b>	internal sheetmetal chassis plate for enclosure	FL117/216
<b>FL413A</b>	internal sheetmetal chassis plate for enclosure	FL120/216
<b>FL415A</b>	internal sheetmetal chassis plate for enclosure	FL124/229
<b>FL417AEM</b>	internal sheetmetal chassis plate for enclosure	FL128
<b>FL419AEM</b>	internal sheetmetal chassis plate for enclosure	FL130