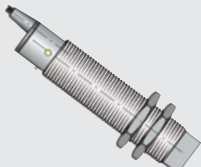
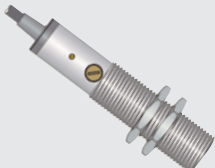


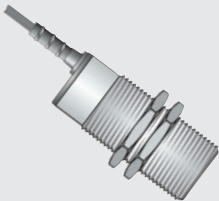
SC18SM-CE10 NPN



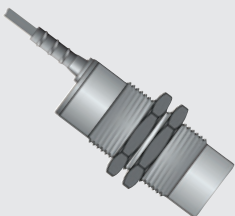
SC18SM-CE10 PNP



SC30SP-C20 NPN



SC30SP-A20



SC30SM-C20 NPN

Capacitive sensors are used to sense all types of materials including liquids, powders, granules and can be used for sensing or counting metallic or non metallic objects.

- Adjustable sensitivity
- Protection degree: IP67
- Ambient limits: -20 - +70°C
- LED indication: Incorporated
- Short circuit and polarity reversal protection

type	supply voltage	flush	non flush	sensing distance mm	PNP	NPN	NO	NC	connector	body length
------	----------------	-------	-----------	---------------------	-----	-----	----	----	-----------	-------------

**M18 standard body**

**DC 10-40V** 4 wire **cable connection**

**Nickelled brass body**

SC18SM-C5 NPN NO+NC	10 - 40 VDC	•		0 - 5	•	•	•	•	cable	90 mm
SC18SM-C5 PNP NO+NC	10 - 40 VDC		•	0 - 5	•		•	•	cable	90 mm
SC18SM-CE10 NPN NO+NC	10 - 40 VDC	•		0 - 10	•	•	•	•	cable	96 mm
SC18SM-CE10 PNP NO+NC	10 - 40 VDC		•	0 - 10	•		•	•	cable	96 mm

**AC 20-250V** 2 wire **cable connection**

SC18SM-A5 NO/NC	20 - 250 VAC	•		0 - 5			•	•	cable	92 mm
SC18SM-AE10 NO/NC	20 - 250 VAC		•	0 - 10			•	•	cable	95 mm

**M30 standard body**

**Plastic body**

**DC 10-60V** 4 wire **cable connection**

SC30SP-C20 NPN NO+NC	10 - 60 VDC	•		0 - 20	•	•	•	•	cable	101 mm
SC30SP-C20 PNP NO+NC	10 - 60 VDC		•	0 - 20	•		•	•	cable	101 mm
SC30SP-CE25 NPN NO+NC	10 - 60 VDC	•		0 - 25	•	•	•	•	cable	101 mm
SC30SP-CE25 PNP NO+NC	10 - 60 VDC		•	0 - 25	•		•	•	cable	101 mm

**AC 20-250V** 2 wire **cable connection**

SC30SP-A20 NO/NC	20 - 250 VAC	•		0 - 20			•	•	cable	101 mm
SC30SP-AE25 NO/NC	20 - 250 VAC		•	0 - 25			•	•	cable	101 mm

**Nickelled brass body**

SC30SM-C20 NPN NO+NC	10 - 60 VDC	•		0 - 20	•	•	•	•	cable	101 mm
SC30SM-C20 PNP NO+NC	10 - 60 VDC		•	0 - 20	•		•	•	cable	101 mm
SC30SM-CE25 NPN NO+NC	10 - 60 VDC	•		0 - 25	•	•	•	•	cable	101 mm
SC30SM-CE25 PNP NO+NC	10 - 60 VDC		•	0 - 25	•		•	•	cable	101 mm

**AC 20-250V** 2 wire **cable connection**

SC30SM-A20 NO/NC	20 - 250 VAC	•		0 - 20			•	•	cable	101 mm
SC30SM-AE25 NO/NC	20 - 250 VAC		•	0 - 25			•	•	cable	101 mm