

**Flow sensors**

Huba Control flow sensors utilise the Vortex trail principle and are available in various options. No moving parts, the flow sensor is not sensitive to debris with marginal pressure loss combined with high accuracy.

- Measuring principle: Vortex - Piezoelectric sensor element
- Output: 4 ... 20 mA (others available on request 0 ... 10V)
- Drinking water approval: KTW, W270, WRAS
- Accuracy: at < 50% fs (water) < 1 % fs
- Flow media: Heating water with standard additives, potable water (hot/cold)



210.906441K



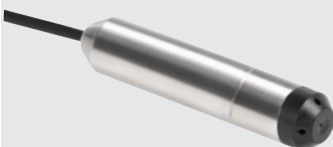
200.908101K



200.920101K



230.910441L



712.913001210

type	nominal diameter	measuring range (l/min)	power supply	output DC	description	connection
------	------------------	-------------------------	--------------	-----------	-------------	------------

**Type 210/200 fibreglass-reinforced plastic PA6T/6I (40% GF)**

- Response time: < 500 ms
- Flow pipe connection: External threaded connection G½ ... G1¼"
- Medium temperature: -40... +125 °C

**Type 210** Fibreglass-reinforced plastic

Analog output 4 ... 20 mA (0 ... 10 V, Frequency square or pulse signal available on request)

- Electrical connection: M12x1 (3 pin) (supplied separately) (IP65)

210.906441K	DN 6	0.5 ... 10	8 - 33 VDC	4 - 20 mA	flow sensor	G ½"
210.908441K	DN 8	0.9 ... 15	8 - 33 VDC	4 - 20 mA	flow sensor	G ½"
210.910441K	DN 10	1.8 ... 32	8 - 33 VDC	4 - 20 mA	flow sensor	G ½"
210.915441K	DN 15	3.5 ... 50	8 - 33 VDC	4 - 20 mA	flow sensor	G ¾"
210.920441K	DN 20	5.0 ... 85	8 - 33 VDC	4 - 20 mA	flow sensor	G 1"
210.925441K	DN 25	9.0 ... 150	8 - 33 VDC	4 - 20 mA	flow sensor	G 1¼"

Note: Other outputs available on request 0 - 5V, 0 - 10V, Radiom. 10 ... 90%

Above flow switches can be provided with additional internal PT1000 temperature sensor

**Type 200** OEM flow sensor

Frequency Square pulse signal - < 0.1 ... > 4.75 V

- Electrical connection: RAST 2.5 / 2.54 connector (supplied separately)
- Protection class: IP65

200.908101K	DN 8	0.9 ... 15	5 VDC	0.1 - 4.75 V	flow sensor	G ½"
200.910101K	DN 10	1.8 ... 32	5 VDC	0.1 - 4.75 V	flow sensor	G ½"
200.915101K	DN 15	3.5 ... 50	5 VDC	0.1 - 4.75 V	flow sensor	G ¾"
200.920101K	DN 20	5.0 ... 85	5 VDC	0.1 - 4.75 V	flow sensor	G 1"
200.925101K	DN 25	9.0 ... 150	5 VDC	0.1 - 4.75 V	flow sensor	G 1¼"

**Connectors for type 200 flow switch**

111668 RAST 2.5 3-pole electrical connector with cable 30 cm

**Type 230 brass bodied flow sensors Red brass / PA6T/6I**

- Response time: < 500 ms
- Electrical connection: M12x1 (3 pin) (supplied separately)
- Protection class: IP65
- Flow pipe connection: External threaded connection G¾ ... G1½"
- Medium temperature: -40... +125 °C

**Type 230** brass bodied flow sensors

Analog output 4 ... 20 mA (0 ... 10 V available on request)

230.910441L	DN 10	1.8 ... 32	8 - 33 VDC	4 - 20 mA	flow sensor	G ¾"
230.915441A	DN 15	3.5 ... 50	8 - 33 VDC	4 - 20 mA	flow sensor	G ¾"
230.920441A	DN 20	5 ... 85	8 - 33 VDC	4 - 20 mA	flow sensor	G 1"
230.925441A	DN 25	9 ... 150	8 - 33 VDC	4 - 20 mA	flow sensor	G 1¼"

Above flow switches can be provided with additional internal PT1000 temperature sensor

**Type 712 level sensing pressure transmitters Ø 23.4 x 116 mm**

Type 712 level sensing pressure transmitters are manufactured using an absolute pressure measuring cell with an adjusted and amplified sensor signal.

- Medium: Liquids (suitable for drinking water)
- Accuracy: ± 0.8 % fs
- Medium temperature range: -25 ... +80 °C
- Protection class: IP68 Cable PE-HD

712.913001210	0.0 ... 0.3	10 - 30 VDC	4 - 20 mA	cable (5m)	transmitter	-
712.911003210	0.0 ... 1.0	10 - 30 VDC	4 - 20 mA	cable (15m)	transmitter	-
712.912004210	0.0 ... 1.6	10 - 30 VDC	4 - 20 mA	cable (20m)	transmitter	-

For M12 connectors and cables see page K-21