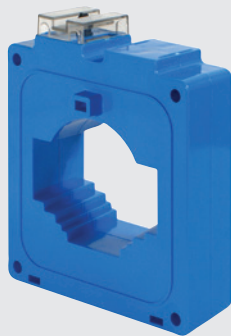




IMN1...



IRB1...



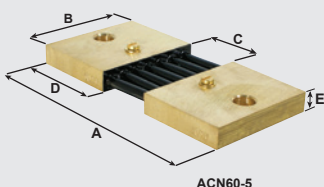
IRB3...



ACN10-5



ACN30-5



ACN60-5

type	ratio	description	class	VA	dimensions (mm)		
					(H)	(W)	(D)
IMN1 ring type transformers			<i>∅ round conductor: 32 mm</i>				
IMN1/05	50/5A	ring current transformer	3	1.3	87	64	42
IMN1/06	60/5A	ring current transformer	3	1.3	87	64	42
IMN1/07	75/5A	ring current transformer	3	1.3	87	64	42
IMN1/10	100/5A	ring current transformer	1	2.5	87	64	42
IMN1/12	125/5A	ring current transformer	1	2.5	87	64	42
IMN1/15	150/5A	ring current transformer	1	3.8	87	64	42
IMN1/16	160/5A	ring current transformer	1	3.8	87	64	42
IMN1/20	200/5A	ring current transformer	1	5	87	64	42
IMN1/25	250/5A	ring current transformer	1	7.5	87	64	42
IMN2 current transformers			<i>∅ round conductor: 38 mm</i>				
Primary bar conductor: 40 x 12.5 mm							
IMN2/16	160/5A	ring current transformer	1	10	99	75	42
IMN2/20	200/5A	ring current transformer	1	10	99	75	42
IMN2/25	250/5A	ring current transformer	1	10	99	75	42
IMN2/30	300/5A	ring current transformer	1	15	99	75	42
IMN2/40	400/5A	ring current transformer	1	25	99	75	42
IMN2/50	500/5A	ring current transformer	1	30	99	75	42
IMN2/60	600/5A	ring current transformer	1	30	99	75	42
IBR1 current transformers			<i>∅ round conductor: 60 mm</i>				
Primary bar conductor: 60 x 20 mm							
IBR1/06	600/5A	ring current transformer	0.5	7.5	115	104	45
IBR1/08	800/5A	ring current transformer	0.5	15	115	104	45
IBR1/10	1000/5A	ring current transformer	0.5	30	115	104	45
IBR1/12	1250/5A	ring current transformer	0.5	30	115	104	45
IBR3 current transformers			<i>∅ round conductor: 110 mm</i>				
Primary bar conductor: 100 x 30 mm							
IBR3/12	1250/5A	ring current transformer	0.5	15	170	152	45
IBR3/16	1600/5A	ring current transformer	0.5	30	170	152	45
IBR3/20	2000/5A	ring current transformer	0.5	30	170	152	45
IBR3/25	2500/5A	ring current transformer	0.5	30	170	152	45
IBR3/30	3000/5A	ring current transformer	0.5	30	170	152	45
IBNP primary wound current transformers							
IBNP/05	5/5A	primary wound CT	0.5	5	111	68	43
IBNP/10	10/5A	primary wound CT	0.5	5	111	68	43
IBNP/15	15/5A	primary wound CT	0.5	5	111	68	43
IBNP/20	20/5A	primary wound CT	0.5	5	111	68	43
IBNP/25	25/5A	primary wound CT	0.5	5	111	68	43
IBNP/30	30/5A	primary wound CT	0.5	5	111	68	43
IBNP/40	40/5A	primary wound CT	0.5	5	111	68	43
DC shunts			50mV output				
– Accuracy:			0.5%				
– Overload:			120% continuously, 1000% for 5 seconds				
			dimensions (mm)				
			A	B	C	D	E
ACN01-5	10A	50mV	105	25	35	14.3	5.5
ACN02-5	20A	50mV	105	25	35	14.3	5.5
ACN03-5	30A	50mV	105	25	35	14.3	5.5
ACN04-5	40A	50mV	105	25	35	14.3	5.5
ACN05-5	50A	50mV	105	25	35	19	9.5
ACN06-5	60A	50mV	105	25	35	19	9.5
ACN08-5	80A	50mV	105	25	35	19	9.5
ACN10-5	100A	50mV	105	25	35	19	9.5
ACN15-5	150A	50mV	105	25	35	19	14.3
ACN20-5	200A	50mV	105	25	35	24.5	16
ACN25-5	250A	50mV	135	40	50	50.8	12.7
ACN30-5	300A	50mV	135	40	50	50.8	12.7
ACN40-5	400A	50mV	135	50	50	38	31.5
ACN50-5	500A	50mV	135	50	50	38	31.5
ACN60-5	600A	50mV	135	65	50	38	31.5
ACN75-5	750A	50mV	135	65	50	38	31.5
ACN80-5	800A	50mV	135	75	50	38	31.5
ACN100-5	1000A	50mV	135	105	50	38	31.5

Intermediate and larger sizes up to 10.000A available on request