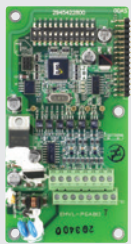


new



VFD185ED43S



EMED-PGABD-1



VFD004DD21A



ECMD-B91608MS

ED series elevator drives

ED series motor drives specifically designed for elevator applications, feature latest innovative control technology providing extended features with outstanding performance. UL/CE certified ensuring the best operational reliability Excellent solution for elevator operation in critical environments providing versatile and flexible control functions and an especially smooth start and stop, critical for passenger safety and comfort.

- Auto-tuning with load attached
- Dual-output protection for reliable rides
- Built-in MODBUS/CANbus communication interface
- Supports both asynchronous and synchronous motors
- Precise time sequence for elevator motion (*start/stop*)
- Auto-correct start torque, load compensation with manual adjustment
- DC braking level and slip compensation enhancing the leveling accuracy providing ride comfort
- Built-in STO (*Safe Torque Off*) function (complies with EN61800-5-2 and EN61508 (SIL2) standards)
- Supports 1-phase 230 VAC UPS (*light-load direction search function triggered automatically on power failure*)

type	motor rating (kW)	description	frame size	dimensions (mm)		
				(H)	(W)	(D)

Single phase 200 - 240 VAC 50/60Hz

VFD037ED21S	3.7kW	1 phase elevator drive	B	247	194	134
-------------	-------	------------------------	---	-----	-----	-----

Three phase 380 - 460 VAC 50/60Hz

VFD055ED43S	5.5kW	3 phase elevator drive	C	350	235	146
VFD075ED43S	7.5kW	3 phase elevator drive	C	350	235	146
VFD110ED43S	11.0kW	3 phase elevator drive	C	350	235	146
VFD150ED43S	15.0kW	3 phase elevator drive	C	350	235	146
VFD185ED43S	18.5kW	3 phase elevator drive	C	350	235	146
VFD220ED43S	22.0kW	3 phase elevator drive	D	404	255	178
VFD300ED43S	30.0kW	3 phase elevator drive	D	404	255	178
VFD370ED43S	37.0kW	3 phase elevator drive	E	550	330	274
VFD450ED43S	45.0kW	3 phase elevator drive	E	550	330	274

Larger sizes available on request

PG feedback cards

EMED-PGAB	supports open-collector or line-driver and UVW encoder signal, 5/12 VDC supply
EMED-PGABD-1	open-collector, differential, UVW encoder signal and frequency divider output
EMED-PGHSD-1	supports Heidenhain ERN1387/ECN1313, SICK HIPERFACE 5/8V supply

DD series elevator door drive

DD series AC motor drives (*specifically designed for elevator door applications*) feature door width auto-tuning with precise open and close control and smooth door open curve and blocking detection.

- User friendly design
- Door width auto-tuning
- Smooth door re-open curve
- Safety protection and blockage detection (*four steps*)
- Induction motor (*asynchronous*) and permanent magnet motor (*synchronous*)
- Multiple door control solutions: distance control / speed control / multi-step speed control modes

Single-phase 230 VAC 50/60Hz

VFD004DD21A	0.4 kW	1-phase elevator door drive	170	215	55
VFD004DD21AB*	0.4 kW	1-phase elevator door drive	170	215	55

* With built-in braking chop and resistor

Slimline sliding door motor DC brushless motor

- Ultra-slim design (55 mm)
- Instant torque up to 3 Nm
- Flexible installation (*front or back side installation*)

ECMD-B91608MS	80W	3.0Nm/250 rpm sliding door motor	160	160	55
---------------	-----	----------------------------------	-----	-----	----

Note: Braking units and resistors for all drives (See next page)