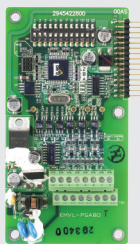




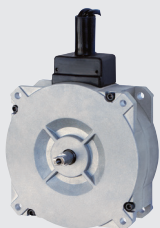
VFD185ED43S



EMED-PGABD-1



VFD004DD21S



ECMD-B91608MS

ED series - Elevator drives

ED series motor drives specifically designed for elevator applications, feature latest innovative control technology providing extended features with outstanding performance. UL/CE certified ensuring the best operational reliability. Excellent solution for elevator operation in critical environments providing versatile and flexible control functions and an especially smooth start and stop, critical for passenger safety and comfort.

- Auto-tuning with load attached
- Dual-output protection for reliable rides
- Built-in MODBUS/CANbus communication interface
- Supports both asynchronous and synchronous motors
- Precise time sequence for elevator motion (*start/stop*)
- Built-in USB-B port for parameter uploads and downloads
- Auto-correct start torque, load compensation with manual adjustment
- DC braking level and slip compensation enhancing the leveling accuracy providing ride comfort
- Built-in STO (*Safe Torque Off*) function (complies with EN61800-5-2 and EN61508 (SIL2) standards)
- Supports 1-phase 230 VAC UPS (*light-load direction search function triggered automatically on power failure*)

type	motor rating (kW)	description	frame size	dimensions (mm)		
				(H)	(W)	(D)
Single - phase input 200 - 240 VAC 50/60Hz						
VFD037ED21S	3.7kW	single-phase elevator drive	B	247	194	134
Three - phase input 380 - 460 VAC 50/60Hz						
VFD055ED43S	5.5kW	three phase elevator drive	C	350	235	146
VFD075ED43S	7.5kW	three phase elevator drive	C	350	235	146
VFD110ED43S	11.0kW	three phase elevator drive	C	350	235	146
VFD150ED43S	15.0kW	three phase elevator drive	C	350	235	146
VFD185ED43S	18.5kW	three phase elevator drive	C	350	235	146
VFD220ED43S	22.0kW	three phase elevator drive	D	404	255	178
VFD300ED43S	30.0kW	three phase elevator drive	D	404	255	178
VFD370ED43S	37.0kW	three phase elevator drive	E	550	330	274
VFD450ED43S	45.0kW	three phase elevator drive	E	550	330	274

Larger sizes available on request.

Note: All sizes up to 30kW have built in brake chopper.

Note: Braking units and resistors for all drives (See A-26)

PG feedback cards

- EMED-PGAB** supports open-collector or line-driver and UVW encoder signal, 5/12 VDC supply
- EMED-PGABD-1** open-collector, differential, UVW encoder signal and frequency divider output
- EMED-PGHSD-1** supports Heidenhain ERN1387/ECN1313, SICK HIPERFACE 5/8V supply

DD series - Elevator door drive

DD series AC motor drives (*specifically designed for elevator door applications*) feature door width auto-tuning with precise open and close control and smooth door open curve and blocking detection.

- User friendly design
- Door width auto-tuning
- Smooth door re-open curve
- Safety protection and blockage detection (*four steps*)
- Induction motor (*asynchronous*) and permanent magnet motor (*synchronous*)
- Multiple door control solutions: distance control / speed control / multi-step speed control modes

Single - phase input 230 VAC 50/60Hz

VFD004DD21S	0.4 kW	single-phase elevator door drive	170	215	55
-------------	--------	----------------------------------	-----	-----	----

Accessories for DD series

- MEC-SG1026S** 1 meter encoder cable (*without D-SUB connector*) for DD series
- MEC-SG3026S** 3 meter encoder cable (*without D-SUB connector*) for DD series

Slimline sliding door motor DC brushless motor

- Ultra-slim design (55 mm)
- Instant torque up to 3 Nm
- Flexible installation (*front or back side installation*)

ECMD-B91608MS	80W	3.0Nm/250 RPM sliding door motor	160	160	55
DPB-N7779	dust cap	dust cover for protection of door motor terminals			