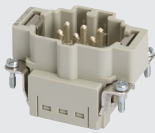




70.310.1040.0



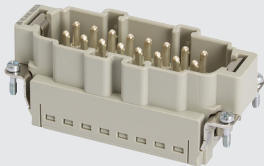
70.300.1040.0



70.415.0653.0



70.405.0653.0



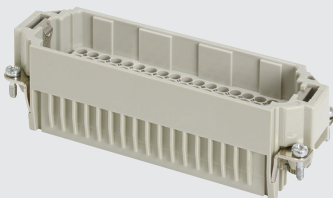
70.415.1653.0



70.405.1653.0



73.810.2453.0



73.810.0853.0

Revos BASIC - Industrial multipole connectors

Heavy duty connectors for use in tough environment conditions. Used in the automotive industry, packaging, instrumentation, control and automation equipment. They permit simple, time-saving installation of machinery and equipment, providing effective protection against mechanical impact, water and dust entry.

- Rated voltage: 690V
- Rated current: 10/16A
- Protection degree: Supplied without gland (IP65 when used with appropriate cable gland)

type	current (A)	No. poles	rated voltage	connect type	cable inlet	size	description
------	-------------	-----------	---------------	--------------	-------------	------	-------------

Contact inserts Fit into all revos bases and hoods to make up a complete connector.

Revos BASIC Standard contact inserts with screw termination - 6/10/16/24/32/48 pole + earth

- Connector set is made up with - contact inserts (male and female) - base - hood

Screw terminal (with wire protection)	(for cables 0.5 - 2.5 mm ²)						
70.310.0640.0	16A	6p+ $\frac{1}{2}$	690V	screw	-	6	male insert - screw term.
70.310.1040.0	16A	10p+ $\frac{1}{2}$	690V	screw	-	10	male insert - screw term.
70.310.1640.0	16A	16p+ $\frac{1}{2}$	690V	screw	-	16	male insert - screw term.
70.310.2440.0	16A	24p+ $\frac{1}{2}$	690V	screw	-	24	male insert - screw term.
70.310.3253.0	16A	32p+ $\frac{1}{2}$	690V	screw	-	32	male insert - screw term.
70.310.4840.0	16A	48p+ $\frac{1}{2}$	690V	screw	-	48	male insert - screw term.
70.300.0640.0	16A	6p+ $\frac{1}{2}$	690V	screw	-	6	female insert - screw term.
70.300.1040.0	16A	10p+ $\frac{1}{2}$	690V	screw	-	10	female insert - screw term.
70.300.1640.0	16A	16p+ $\frac{1}{2}$	690V	screw	-	16	female insert - screw term.
70.300.2440.0	16A	24p+ $\frac{1}{2}$	690V	screw	-	24	female insert - screw term.
70.300.3253.0	16A	32p+ $\frac{1}{2}$	690V	screw	-	32	female insert - screw term.
70.300.4840.0	16A	48p+ $\frac{1}{2}$	690V	screw	-	48	female insert - screw term.

Push-in termination contact inserts

New push-in technology allows flexible conductors with ferrules to be simply and quickly connected without the use of tools. Simply push-in the wire conductor for a high contact quality, reliable, gas-tight, vibration proof connection.

- Extremely quick connection time - (cables are simply withdrawn by pressing a release button)

70.415.0653.0	16A	6p+ $\frac{1}{2}$	690V	push-in	-	6	male insert - push-in term.
70.415.1053.0	16A	10p+ $\frac{1}{2}$	690V	push-in	-	10	male insert - push-in term.
70.415.1653.0	16A	16p+ $\frac{1}{2}$	690V	push-in	-	16	male insert - push-in term.
70.415.2453.0	16A	24p+ $\frac{1}{2}$	690V	push-in	-	24	male insert - push-in term.
70.405.0653.0	16A	6p+ $\frac{1}{2}$	690V	push-in	-	6	female insert - push-in term.
70.405.1053.0	16A	10p+ $\frac{1}{2}$	690V	push-in	-	10	female insert - push-in term.
70.405.1653.0	16A	16p+ $\frac{1}{2}$	690V	push-in	-	16	female insert - push-in term.
70.405.2453.0	16A	24p+ $\frac{1}{2}$	690V	push-in	-	24	female insert - push-in term.

Revos DD High density contact inserts for crimp contacts - 24/42/72/108 poles

High contact density in the most compact housing. Connection is made with proven turned crimp contacts.

- Crimp connection - (crimp contact pins to be ordered separately - see below)
- Connector set is made up with - contact inserts and crimp contact pins (male and female) - base - hood

73.810.2453.0	10A	24p+ $\frac{1}{2}$	250V	crimp	-	6	male insert - for crimp pins
73.810.4253.0	10A	42p+ $\frac{1}{2}$	250V	crimp	-	10	male insert - for crimp pins
73.810.7253.0	10A	72p+ $\frac{1}{2}$	250V	crimp	-	16	male insert - for crimp pins
73.810.0853.0	10A	108p+ $\frac{1}{2}$	250V	crimp	-	24	male insert - for crimp pins
73.800.2453.0	10A	24p+ $\frac{1}{2}$	250V	crimp	-	6	female insert - for crimp pins
73.800.4253.0	10A	42p+ $\frac{1}{2}$	250V	crimp	-	10	female insert - for crimp pins
73.800.7253.0	10A	72p+ $\frac{1}{2}$	250V	crimp	-	16	female insert - for crimp pins
73.800.0853.0	10A	108p+ $\frac{1}{2}$	250V	crimp	-	24	female insert - for crimp pins

Crimp contacts for Revos DD contact inserts (cables 0.75 - 1 mm²)

05.544.4329.8	10A	-	250 V	0.75 - 1 mm ²	male crimp contact pins
02.125.4329.8	10A	-	250 V	0.75 - 1 mm ²	female crimp contact pins
05.544.4429.8	10A	-	250 V	1.5 mm ²	male crimp contact pins
02.125.4429.8	10A	-	250 V	1.5 mm ²	female crimp contact pins

Accessories for contact inserts

95.101.0800.0	tool	-	-	crimp	-	crimping tool for crimp contact pins
05.502.2100.0	die	-	-	crimp	-	die set for crimping contact pins
05.502.3100.0	pos.	-	-	crimp	-	contact pin positioner for crimping tool
05.502.0710.0	tool	-	-	-	-	extraction tool for removing crimp contact pins from contact inserts