

70.320.1028.0



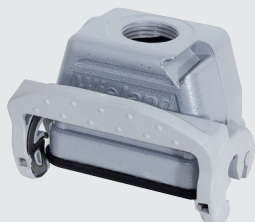
70.331.1035.1



70.350.1035.1
(excluding gland)



70.352.1035.1
(excluding gland)



70.372.0635.1

continued... Revos BASIC

- Set is made up with - contact inserts (*male and female*) - base - hood

type	locking lever	gland entry	cable inlet	size	description
Bases (housings)					<i>(diecast aluminium)</i>
Panel mount (open bottom base - no cover)					
Single locking lever					
70.320.0628.0	single	open	straight	6	bulkhead mounting base
71.320.1028.0	single	open	straight	10	bulkhead mounting base
71.320.1628.0	single	open	straight	16	bulkhead mounting base
71.320.2428.0	single	open	straight	24	bulkhead mounting base
70.320.4828.0	single	open	straight	48	bulkhead mounting base
Double locking lever					
70.320.1028.0	double	open	straight	10	bulkhead mounting base
70.320.1628.0	double	open	straight	16	bulkhead mounting base
70.320.2428.0	double	open	straight	24	bulkhead mounting base
70.320.3228.0	double	open	straight	32	bulkhead mounting base
Surface mount (closed bottom base)			metric threaded side cable gland entry		
Single locking lever					
70.331.0635.1	single	M20	side	6	side entry surface mount base
71.331.1035.1	single	M20	side	10	side entry surface mount base
71.331.1635.1	single	M25	side	16	side entry surface mount base
71.331.2435.1	single	M25	side	24	side entry surface mount base
70.344.4835.1	single	M40	side	48	side entry surface mount base
Double locking lever					
70.331.1035.1	double	M20	side	10	side entry surface mount base
70.331.1635.1	double	M25	side	16	side entry surface mount base
70.331.2435.1	double	M25	side	24	side entry surface mount base
Hoods (with studs to receive locking lever on bases)					<i>(diecast aluminium)</i>
Lateral cable entry (side entry)			metric threaded cable gland entry		
Single locking lever					
70.350.0635.1	single	M20	side	6	lateral cable gland entry hood
71.350.1035.1	single	M20	side	10	lateral cable gland entry hood
71.350.1635.1	single	M25	side	16	lateral cable gland entry hood
71.350.2435.1	single	M25	side	24	lateral cable gland entry hood
70.350.4835.1	single	M32	side	48	lateral cable gland entry hood
Double locking lever					
70.350.1035.1	double	M20	side	10	lateral cable gland entry hood
70.350.1635.1	double	M25	side	16	lateral cable gland entry hood
70.350.2435.1	double	M25	side	24	lateral cable gland entry hood
70.350.3235.1	double	M32	side	32	lateral cable gland entry hood
Top cable entry			metric threaded cable gland entry		
Single locking lever					
70.352.0635.1	single	M20	top	6	top cable gland entry hood
71.352.1035.1	single	M20	top	10	top cable gland entry hood
71.352.1635.1	single	M25	top	16	top cable gland entry hood
71.352.2435.1	single	M25	top	24	top cable gland entry hood
70.352.4835.1	single	M32	top	48	top cable gland entry hood
Double locking lever					
70.352.1035.1	double	M20	top	10	top cable gland entry hood
70.352.1635.1	double	M25	top	16	top cable gland entry hood
70.352.2435.1	double	M25	top	24	top cable gland entry hood
70.352.3235.1	double	M32	top	32	top cable gland entry hood
With locking levers (for in-line cable-to-cable connection)					
70.372.0635.1	single	M20	top	6	locking levers for cable to cable
71.372.1035.1	single	M20	top	10	locking levers for cable to cable
71.372.1635.1	single	M25	top	16	locking levers for cable to cable
71.372.2435.1	single	M25	top	24	locking levers for cable to cable