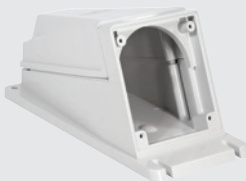




413.1663



418.6367



507.M0125



513.3256

type	amps	pin configuration	protection		description	flange size
			IP44	IP67		
Socket outlets - panel mount female socket						
Angled panel mount sockets (18°)			16A - 32A - 63A - 125A			
413.1663	16A	2P+E (3pin)	●		angled socket	70 x 87
413.1666	16A	3P+E (4pin)	●		angled socket	70 x 87
413.1667	16A	3P+N+E (5pin)	●		angled socket	70 x 87
413.3263	32A	2P+E (3pin)	●		angled socket	84 x 106
413.3266	32A	3P+E (4pin)	●		angled socket	84 x 106
413.3267	32A	3P+N+E (5pin)	●		angled socket	84 x 106
413.6363	63A	2P+E (3pin)		●	angled socket	100 x 110
413.6366	63A	3P+E (4pin)		●	angled socket	100 x 110
413.6367	63A	3P+N+E (5pin)		●	angled socket	100 x 110
418.1663	16A	2P+E (3pin)		●	angled socket	70 x 87
418.1666	16A	3P+E (4pin)		●	angled socket	70 x 87
418.1667	16A	3P+N+E (5pin)		●	angled socket	70 x 87
418.3263	32A	2P+E (3pin)		●	angled socket	84 x 106
418.3266	32A	3P+E (4pin)		●	angled socket	84 x 106
418.3267	32A	3P+N+E (5pin)		●	angled socket	84 x 106
418.6363	63A	2P+E (3pin)		●	angled socket	100 x 110
418.6366	63A	3P+E (4pin)		●	angled socket	100 x 110
418.6367	63A	3P+N+E (5pin)		●	angled socket	100 x 110
418.12563	125A	2P+E (3pin)		●	angled socket	114 x 114
418.12566	125A	3P+E (4pin)		●	angled socket	114 x 114
418.12567	125A	3P+N+E (5pin)		●	angled socket	114 x 114
Accessories for above angled sockets						
Micro-switch		<i>for inserted plug detection (only on above angled outlet versions)</i>				
654.0391	16/32A	1x NO	micro-switch for above angled sockets			
654.0392	16/32A	1x NC	micro-switch for above angled sockets			
654.0393	63/125A	1x NO	micro-switch for above angled sockets			
654.0394	63/125A	1x NC	micro-switch for above angled sockets			
Housings to surface mount angled (above) sockets						
570.0116	16A	angled housing		●	for p/mnt sockets	70 x 87
570.0016	16A	straight housing		●	for p/mnt sockets	70 x 87
570.0132	32A	angled housing		●	for p/mnt sockets	84 x 106
570.0032	32A	straight housing		●	for p/mnt sockets	84 x 106
570.M0163	63A	angled housing		●	for p/mnt sockets	100 x 110
570.M0125	125A	angled housing		●	for p/mnt sockets	114 x 114
Straight sockets - panel mount female socket						
			63A - 125A			
423.6363	63A	2P+E (3pin)	●		straight socket	100 x 110
423.6366	63A	3P+E (4pin)	●		straight socket	100 x 110
423.6367	63A	3P+N+E (5pin)	●		straight socket	100 x 110
428.6363	63A	2P+E (3pin)		●	straight socket	100 x 110
428.6366	63A	3P+E (4pin)		●	straight socket	100 x 110
428.6367	63A	3P+N+E (5pin)		●	straight socket	100 x 110
428.12563	125A	2P+E (3pin)		●	straight socket	114 x 114
428.12566	125A	3P+E (4pin)		●	straight socket	114 x 114
428.12567	125A	3P+N+E (5pin)		●	straight socket	114 x 114
<i>For 16/32A straight socket outlets (75 x 75 mm flange) see Eureka series on page I-5</i>						
OPTIMA series surface-mount socket outlets			16A - 32A			
• Insulation voltage:		690 VAC				
• Operating temperature:		-25 - +40°C (max operating temperature +60°C)				
• Glow wire test:		650/850°C				
• Material:		Engineering plastic (halogen free)				
• Impact resistance		IK08 (1.7kg with a striking energy of 2J)				
type	amps	pin configuration	protection		description	cable outlet
			IP44	IP67		
BASE version - IP44			compact, economical, slimline socket outlets			
513.1653	16A	2P+E (3pin)	●		surface mnt socket	M20 x 1.5
513.1656	16A	3P+E (4pin)	●		surface mnt socket	M25 x 1.5
513.1657	16A	3P+N+E (5pin)	●		surface mnt socket	M25 x 1.5
513.3253	32A	2P+E (3pin)	●		surface mnt socket	M32 x 1.5
513.3256	32A	3P+E (4pin)	●		surface mnt socket	M32 x 1.5
513.3257	32A	3P+N+E (5pin)	●		surface mnt socket	M32 x 1.5