



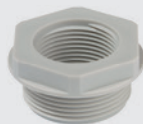
10060768



10101862



10063573



10063581



10063665

SPRINT cable glands can be further enhanced to be applied for diverse applications by the introduction of various special inserts for blind, reduced cable diameters, multiple cable sealing, irregular shaped cables.

type	model	for gland	compress area (mm)	description	
------	-------	-----------	--------------------	-------------	--

**Reduction sealing inserts** (for reduced cable diameters with existing gland)

10062183	RDE 12	M12	1 - 3	gland reduction sealing inserts	
10062184	RDE 16	M16	2 - 6	gland reduction sealing inserts	
10062185	RDE 20	M20	4 - 8	gland reduction sealing inserts	
10060768	RDE 25	M25	7 - 12	gland reduction sealing inserts	
10062186	RDE 32	M32	9 - 14	gland reduction sealing inserts	
10062187	RDE 40	M40	12 - 20	gland reduction sealing inserts	

**Blind plugs for glands**

For seal tight of unused cable inlets or multiple sealing inserts TL (mm)

10064000	BS 2	2 mm	gland blind plugs		12
10064002	BS 4	4 mm	gland blind plugs		12
10064004	BS 6	6 mm	gland blind plugs		16
10064005	BS 7	7 mm	gland blind plugs		16
10064008	BS 10	10 mm	gland blind plugs		16
10064010	BS 13	13 mm	gland blind plugs		22
10064012	BS 17	17 mm	gland blind plugs		22
10064014	BS 21	21 mm	gland blind plugs		22

**CLIXX membrane cable entry with strain relief**

- Reliable sealing: IP66 and IP67 to EN 60 529 weather proof, UV resistant
- Space-saving: Flat design, minimal space requirement
- Easiest assembly: External mounting from one side only - no thread, no tools, no locknuts
- Incorporated: Strain relief to EN 50 262 Type A
- Time-saving: Simple one-hand-only assembly reduces installation time by 80%
- For wall thickness: 0.8 - 3.5 mm
- Economically priced: Can also be used as a sealing plug
- Material: Polypropylene / Thermoplastic elastomere -40°C to 65°C

10101861	CLIXX 16	M16	4 - 10	membrane cable entry with strain relief	
10101359	CLIXX 20	M20	6 - 13	membrane cable entry with strain relief	
10101862	CLIXX 25	M25	9 - 17	membrane cable entry with strain relief	

**Adaptors**

- Temperature range: -40°C to 100°C
- Material: Polyamide, reinforced glass fibre

type	model	from male	to female	description	TL (mm)
------	-------	-----------	-----------	-------------	---------

**Enlargement adaptors metric - metric**

10063570	KEM 12/16	M12	M16	enlarge adaptor	27
10063571	KEM 16/20	M16	M20	enlarge adaptor	27
10063572	KEM 20/25	M20	M25	enlarge adaptor	27
10063573	KEM 25/32	M25	M32	enlarge adaptor	28
10063574	KEM 32/40	M32	M40	enlarge adaptor	30
10063575	KEM 40/50	M40	M50	enlarge adaptor	30

**Reduction adaptors metric - metric**

10063577	KRM 16/12	M16	M12	reduction adaptor	16
10063579	KRM 20/16	M20	M16	reduction adaptor	17
10063582	KRM 25/20	M25	M20	reduction adaptor	17
10063584	KRM 32/20	M32	M20	reduction adaptor	19
10063585	KRM 32/25	M32	M25	reduction adaptor	19
10063588	KRM 40/32	M40	M32	reduction adaptor	19
10063591	KRM 50/40	M50	M40	reduction adaptor	21

**PG - metric adaptors**

10063650	APM 7/12	PG 7	M12	metric - PG adaptor	27
10063653	APM 9/16	PG 9	M16	metric - PG adaptor	27
10063655	APM 11/16	PG 11	M16	metric - PG adaptor	27
10063659	APM 13.5/20	PG 13.5	M20	metric - PG adaptor	28
10063661	APM 16/20	PG 16	M20	metric - PG adaptor	28
10063662	APM 16/25	PG 16	M25	metric - PG adaptor	28
10063664	APM 21/25	PG 21	M25	metric - PG adaptor	30
10063667	APM 29/32	PG 29	M32	metric - PG adaptor	19
10063670	APM 36/40	PG 36	M40	metric - PG adaptor	21
10063673	APM 42/40	PG 42	M40	metric - PG adaptor	21