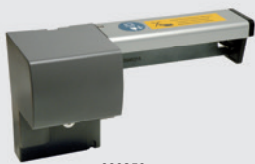


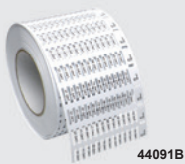
new



Rolly2000



990856



44091B



44192



84...WPYG

Thermal transfer printer for customised marking of tags on rolls

ROLLY2000 is designed for volume printing of all Cembre flat material on rolls, eg. Cable tags for holders, tie-on, wraparound cable markers, legend strips and labels.

Carriage loading and unloading operations are rapid and support templates are easily interchangeable. As pigment deposited from the ribbon dries instantaneously, printed sheets are immediately ready for use.

ROLLY2000 package comprises: (H) 274 x (W) 242 x (D) 446 mm

- ROLLY2000 printer
- Mains and USB cable, Black printer ribbon, installation/operating documentation, GENIUSPRO - software

type	description
ROLLY2000 printer	Thermal transfer printer for marking of tags and legends

- **Speed** Prints 1000 TPM-ROLL 4 x 10 cable tags in less than 2 minutes
- **Convenience** Software provides quick and easy upload of data to be printed
- **Economy** Prints up to 140.000 TPM-ROLL 4 x 10 cable tags with a single ribbon
- **Quality** Printer resolution 300 dpi

ROLLY2000 Thermal transfer printer for marking tags and legends on rolls

Accessories for ROLLY2000 printer

type	width (mm)	length (met.)	colour	description	Pantone ref.
842112	105	200	black	TPS-060 thermal t/fer printer ribbon	Black C
990856	ROLLY2000-CUTTER to automatically cut continuous flexible material				

TPM-ROLL push-in 4 mm marking tags on a roll for **PMF, PMT-AC** tag holders

- Presented on a roll for ROLLY2000 printers
- Tags are simply inserted into appropriate holders and snapped off their branches

Material: Rigid PVC, self extinguishing to class VO: UL 94
 Operating temperature: -30°C - +60°C

type	size (mm)	SW code	colour	description	tags per roll
44091B	4 x 12	4022	white	push-in tags for PMF 4 mm holders	12552
44092B	4 x 15	4023	white	push-in tags for PMF 4 mm holders	12552
44093	4 x 20	4005	white	push-in tags for PMF 4 mm holders	10200
44096B	4 x 30	4026	white	push-in tags for PMF 4 mm holders	6270
44097	4 x 40	4007	white	push-in tags for PMF 4 mm holders	5005
44041B	4 x 12	4022	yellow	push-in tags for PMF 4 mm holders	12552
44042B	4 x 15	4023	yellow	push-in tags for PMF 4 mm holders	12552
44043	4 x 20	4005	yellow	push-in tags for PMF 4 mm holders	10200
44046B	4 x 30	4026	yellow	push-in tags for PMF 4 mm holders	6270
44047	4 x 40	4007	yellow	push-in tags for PMF 4 mm holders	5005

TAR-ROLL push-in 9 mm marking tags for **PMT** and **RT-TAPW** tag holders

75098	9 x 20	4301	white	push-in tags for PMT 9 mm holders	5800
75099	9 x 70	4300	white	push-in tags for PMT 9 mm holders	1450
75049	9 x 70	4300	yellow	push-in tags for PMT 9 mm holders	1450

ETF-ROLL tie-on, precut one piece 13 mm markers (max cable tie width 4.8 mm)

44192	13 x 57	4400	white	tie-on cable and conduit tags	1775
44142	13 x 57	4400	yellow	tie-on cable and conduit tags	1775

STRIP-ROLL-R modular component legend strips on a roll

- For use with RTA-TAP rail legend holder (page L-42)
- **SW code - 5002** - 430 mm / **SW 5102** - 630 mm / **SW5 202** - 1000 mm

13160	15 mm	-	white	modular component legend strip	25 met
--------------	-------	---	-------	--------------------------------	--------

TTL self-adhesive thermal transfer labels on a roll (Polyester film)

8400008WPYG	7 x 15	4102	white	self adhesive labels on a roll	32000
8401010WPYG	7 x 20	4101	white	self adhesive labels on a roll	24000
8400092WPYG	9 x 15	4107	white	self adhesive labels on a roll	26660
8400017WPYG	9 x 20	4106	white	self adhesive labels on a roll	19995
8400094WPYG	9 x 38	4108	white	self adhesive labels on a roll	13300
8401008WPYG	15 x 27	4120	white	self adhesive labels on a roll	13320
8400038WPYG	22 x 40	4164	white	self adhesive labels on a roll	4800
8400073WPYG	25 x 45	4168	white	self adhesive labels on a roll	5710
8400042WPYG	30 x 50	4175	white	self adhesive labels on a roll	2420
8400072WPYG	30 x 80	4176	white	self adhesive labels on a roll	2420
8400051WPYG	40 x 80	4188	white	self adhesive labels on a roll	2800
8400083WPYG	40 x 90	4121	white	self adhesive labels on a roll	1860