

new



PSRM16-P-10B



WLCM20S-7B



PLNM16B



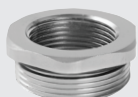
PVM8



MVM12



EAM16/M20H



RAM32/M25H

Wiring accessories

type	AG (mm)	thread length	compress area (mm)	colour	description
------	---------	---------------	--------------------	--------	-------------

Strain relief cable glands (supplied with locknut) (IP68-10)

Material: Nylon PA66 UL approved (Flammability UL94V-2)

PSRM12-P-7B	M12	8.5mm	4-7	black	nylon strain relief gland
PSRM16-P-10B	M16	10mm	6-10	black	nylon strain relief gland
PSRM20S-P-12B	M20	10mm	6-12.5	black	nylon strain relief gland

Waterproof in-line connector (IP68-10)

Material: Nylon PA66 UL approved (Flammability UL94V-2) seal: EPDM
Ambient temperature: -40°C...+100°C (instantaneous heat resistance up to 120°C)

WLCM20S-7B	M20	3 pole	4-7	black	waterproof connector
WLCM20S-11B	M20	3 pole	6-11	black	waterproof connector
WLCM25-16B	M25	4 pole	10-16	black	waterproof connector
WLCM25-18B	M25	4 pole	13-19	black	waterproof connector

Plastic locknuts (metric)

PLNM12B	M12	locknut		black	nylon metric locknut (only)
PLNM16B	M16	locknut		black	nylon metric locknut (only)
PLNM20B	M20	locknut		black	nylon metric locknut (only)
PLNM22B	M22	locknut		black	nylon metric locknut (only)
PLNM25B	M25	locknut		black	nylon metric locknut (only)
PLNM32B	M32	locknut		black	nylon metric locknut (only)
PLNM40B	M40	locknut		black	nylon metric locknut (only)
PLNM50B	M50	locknut		black	nylon metric locknut (only)
PLNM63B	M63	locknut		black	nylon metric locknut (only)

Vent plugs (pressure equalisation for sealed enclosures) (IP68-10)

Incorporates an internal PTFE-membrane, designed to balance internal enclosure temperature with external ambient, avoiding internal condensation without compromising the IP rating of the enclosure.

Influent pressure: >5 Bar
Temperature: -50°C...+120°C

type	AG (mm)	influent pressure	compress area (mm)	colour	description
------	---------	-------------------	--------------------	--------	-------------

Nylon PA66 UL approved (Flammability UL94V-2)

PVM8	M8	>5 bar	Ap 150-350	light grey	screw-in vent plugs
PVM12	M12	>5 bar	Ap 150-350	light grey	screw-in vent plugs
PVM16	M16	>5 bar	Ap 150-350	light grey	screw-in vent plugs
PVM8B	M8	>5 bar	Ap 150-350	black	screw-in vent plugs
PVM12B	M12	>5 bar	Ap 150-350	black	screw-in vent plugs
PVM16B	M16	>5 bar	Ap 150-350	black	screw-in vent plugs

Nickel plated brass

MVM8	M8	>5 bar	Ap 150-350	nickel	screw-in vent plugs
MVM12	M12	>5 bar	Ap 150-350	nickel	screw-in vent plugs
MVM16	M16	>5 bar	Ap 150-351	nickel	screw-in vent plugs

Adaptors (metallic) enlargers / reducers

type	from male	to female	thread length	colour	description
------	-----------	-----------	---------------	--------	-------------

• Nickel plated brass

Enlargement adaptors

EAM12/M16H	M12	M16	6 mm	nickel	M enlargement adaptors
EAM16/M20H	M16	M20	6 mm	nickel	M enlargement adaptors
EAM20/M25H	M20	M25	6.5 mm	nickel	M enlargement adaptors
EAM25/M32H	M25	M32	7.5 mm	nickel	M enlargement adaptors
EAM32/M40H	M32	M40	8 mm	nickel	M enlargement adaptors
EAM40/M50H	M40	M50	9 mm	nickel	M enlargement adaptors

RAM16/M12H	M16	M12	6 mm	nickel	M reduction adaptors
RAM20/M16H	M20	M16	6 mm	nickel	M reduction adaptors
RAM25/M20H	M25	M20	6.5 mm	nickel	M reduction adaptors
RAM32/M25H	M32	M25	7.5 mm	nickel	M reduction adaptors
RAM40/M32H	M40	M32	8 mm	nickel	M reduction adaptors
RAM50/M40H	M50	M40	9 mm	nickel	M reduction adaptors