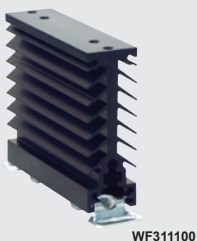


All Celduc SSR's (*solid state relays*) are fitted with back-to-back thyristors and employ 4th generation TMS² technology with a very long life expectancy.

Celpac® SU series power relays

(H) 42 x (W) 91 x (D) 22.5 mm

- Cost-effective, reliable and compact solution (*22.5mm pitch SSR solution*)
- Mounting configuration compatible with all standard hockey puck style relays
- Pluggable control terminals
- Over-voltage protection on input (*transil*)
- IP20 terminal protection cover (*removable*)
- Control status LED indication



type	switching current	switching voltage	peak voltage	control voltage	description
------	-------------------	-------------------	--------------	-----------------	-------------

SU9 range for resistive loads (AC-51) - heating (H) 91 x (W) 42 x (D) 22.5 mm

- Zero-cross switching specifically designed for resistive loads

SU942460	25A	12 - 280 VAC	600V	3 - 32 VDC	zero-cross for resistive loads
SU963460	35A	24 - 600 VAC	1200V	3.5 - 32 VDC	zero-cross for resistive loads
SU965460	50A	24 - 600 VAC	1200V	3.5 - 32 VDC	zero-cross for resistive loads
SU967460	75A	24 - 600 VAC	1200V	3.5 - 32 VDC	zero-cross for resistive loads

SU8 range for most load types - lamps and infrared (H) 91 x (W) 42 x (D) 22.5 mm

- Zero-cross switching with low zero-crossing level (<12V)

DC control

SU842070	25A	12- 275 VAC	600V	3 - 32 VDC	zero-cross for most loads
SU865070	50A	24 - 510 VAC	1200V	3.5 - 32 VDC	zero-cross for most loads
SU867070	75A	24 - 510 VAC	1200V	3.5 - 32 VDC	zero-cross for most loads

AC control

SU842970	25A	12 - 275 VAC	600V	180 - 240 VAC	zero-cross for most loads
SU865970	50A	24 - 510 VAC	1200V	180 - 240 VAC	zero-cross for most loads

SU7 range for motor loads (AC-53) inductive loads and phase angle control applications

- Random or instant switching (<50µs)

SU765070	50A	24 - 510 VAC	1200V	3.5 - 32 VDC	random for motor loads
-----------------	-----	--------------	-------	--------------	------------------------

ECOM temperature controller to combine with SU power solid state relay

Temperature controller, current monitor and communication interface in one unit, to be combined with a Solid State Relay (SSR) for space reduction and wiring simplification.

- Temp control with thermocouple input, loop and heater break alarms and cooling PID auto tuning
- Current monitoring and alarms up to 50A with integrated current transformer (CT)
- RS-485 communication with MODBUS RTU (*others on request*)
- Plugs directly onto SU 22.5mm pitch SSR's
- J,K,T,E thermocouples
- Auxiliary output for cooling, alarm or 3 Phase application control
- ON-OFF with hysteresis / P / PI / PID / PD time proportioned, control algorithms

ECOM0010	24 VDC	combined temperature controller, current monitoring, comm. module		
-----------------	--------	---	--	--

ESUC current monitoring module for SU range

Mounted directly onto SU or SUL devices, this module provides diagnostic information for up to 5 heating elements in parallel.

- Permanent load current monitoring
- Current teaching function by push button or external logic input
- One alarm threshold 0.84 I_{teach} (-16%)
- Detection of: - partial load break - open mains - open load - short-circuited SSR

ESUC0450	2 - 40A	8 - 30 VDC	current monitoring module	
-----------------	---------	------------	---------------------------	--

Accessories SU series SSR's

type	thermal characteristics	description	dimensions (mm)		
			(H)	(W)	(D)

Heatsinks SSR current ratings are based on sufficient cooling by the use of heatsinks

WF311100	3K/W	DIN rail mountable heatsink	80	22.5	73
WF151200	2.2K/W	DIN rail mountable heatsink	80	45	73

5TH24000	thermal transfer pads	for mounting SU relays onto heatsinks			
-----------------	-----------------------	---------------------------------------	--	--	--