



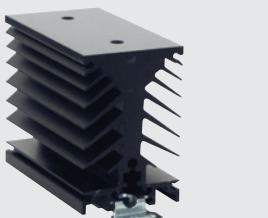
SO942460



SO867070



SO765090



WF151200

All Celduc SSR's (*solid state relays*) are fitted with back-to-back thyristors and employ 4th generation TMS² technology with a very long lifetime expectancy.

Okpac® SO series power relays (H) 59.4 x (W) 45 x (D) 30mm

- Very high immunity according to IEC/EN 61000-4-4 (bursts) and IEC/EN 61000-4-5 (spikes)
- EMC compatible for industrial environment
- Control status LED
- Regulated input current
- IP20 protection cover (*removable*)

type	switching current	switching voltage	peak voltage	control voltage	description
------	-------------------	-------------------	--------------	-----------------	-------------

SO9 range for resistive loads (AC-51) - heating (H) 59.4 x (W) 45 x (D) 30mm

- Zero-cross switching specifically designed for resistive loads
- Input overvoltage protection

SO941460	12A	12 - 280 VAC	600V	3 - 32 VDC	zero-cross for resistive loads
SO942460	25A	12 - 280 VAC	600V	3 - 32 VDC	zero-cross for resistive loads
SO943460	35A	12 - 280 VAC	600V	3 - 32 VDC	zero-cross for resistive loads
SO965460	50A	24 - 600 VAC	1200V	3 - 32 VDC	zero-cross for resistive loads
SO967460	75A	24 - 600 VAC	1200V	3 - 32 VDC	zero-cross for resistive loads

SO8 range for most load types - lamps and infrared (H) 59.4 x (W) 45 x (D) 30mm

- Zero-cross switching with low zero-crossing level (<12V)
- Voltage protection on input (*transil*) and output (VDR)

DC control

SO842074	25A	12 - 275 VAC	600V	3 - 32 VDC	zero-cross for most loads
SO845070	50A	12 - 275 VAC	600V	3 - 32 VDC	zero-cross for most loads
SO865070	50A	24 - 510 VAC	1200V	3.5 - 32 VDC	zero-cross for most loads
SO867070	75A	24 - 510 VAC	1200V	3.5 - 32 VDC	zero-cross for most loads
SO868070	95A	24 - 510 VAC	1200V	3.5 - 32 VDC	zero-cross for most loads
SO869070	125A	24 - 510 VAC	1200V	3.5 - 32 VDC	zero-cross for most loads

AC control

SO842974	25A	12 - 275 VAC	600V	20 - 265 VAC/DC	zero-cross for most loads
SO865970	50A	24 - 510 VAC	1200V	20 - 265 VAC/DC	zero-cross for most loads
SO867970	75A	24 - 510 VAC	1200V	20 - 265 VAC/DC	zero-cross for most loads
SO868970	95A	24 - 510 VAC	1200V	20 - 265 VAC/DC	zero-cross for most loads
SO869970	125A	24 - 510 VAC	1200V	20 - 265 VAC/DC	zero-cross for most loads

SO7 range for motor loads (AC-53) inductive loads and phase angle control applications

- Random switching Solid State Relay designed for high inductive loads, motors (AC-53)
- Over-Voltage protection on input (*transil*) and output (RC and VDR)

DC control

SO765090	50A	24 - 510 VAC	1200V	3.5 - 32 VDC	random for motor loads
SO767090	75A	24 - 510 VAC	1200V	3.5 - 32 VDC	random for motor loads
SO768090	95A	24 - 510 VAC	1200V	3.5 - 32 VDC	random for motor loads

SOB series two phase SSR's (H) 58.5 x (W) 45 x (D) 30 mm

- Dual zero cross Solid State Relay with LED indication for each input
- Plug-in control terminals (*connector to be ordered separately*)

SOB9 designed for resistive loads

SOB965660	2 x 50A	24 - 600 VAC	1200V	8 - 30 VDC	zero-cross for resistive loads
------------------	---------	--------------	-------	------------	--------------------------------

SOB8 designed for most loads

SOB865660	2 x 50A	24 - 600 VAC	1200V	8 - 30 VDC	zero-cross for most loads
------------------	---------	--------------	-------	------------	---------------------------

1Y042715 plug-in input screw terminal for **SOB 9** (above) dual phase relay

Accessories for above SO series relays

type	thermal characteristics	description	dimensions (mm)		
			(H)	(W)	(D)

Heatsinks SSR current ratings are based on sufficient cooling by the use of heatsinks

WF151200	2.2K/W	DIN rail mountable heatsink	80	45	72
WF108110	1.1K/W	DIN rail mountable heatsink	90	98	81
WF115100	0.9K/W	DIN rail mountable heatsink	110	90	100
5TH23000	thermal transfer pads		for mounting SO relays onto heatsinks		
1LD12020	DIN rail adaptor		for direct DIN rail mounting of SO relays		