

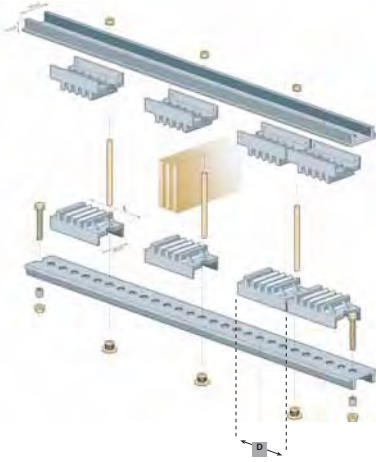


Vertical bars



Busbar systems and accessories

TOP compact adjustable busbar support - up to 4500A (IEC 60439-1)



- universal fixing support
- adjustable distance between phases
- high short-circuit strength (see page 221 for ratings)
- non magnetic aluminium prepunched profile (AL EN AW-6060 Alloy)
- easy to install - cost effective
- for bars 30-120mm wide / 5 or 10mm thick
- type tested according to IEC 60439-1 certification: ACAE LOVAG (65/75/100kA eff 1 sec)

type	for busbar thickness	no. bars		description	price
------	----------------------	----------	--	-------------	-------

Three pole (supplied with insulated supports and all screws, nuts, washers)

TOP1005	5mm	1-2	TOP2/5T	busbar support kit	
TOP1025	10mm	1	TOP1/10T	busbar support kit	
TOP1035	10mm	1-2	TOP2/10T	busbar support kit	
TOP1045	10mm	1-3	TOP3/10T	busbar support kit	

Four pole (3Ph+N) supplied with insulated supports and all screws, nuts, washers)

TOP1010	5mm	1-2	TOP2/5TN	busbar support kit	
TOP1040	10mm	1-2	TOP2/10TN	busbar support kit	
TOP1050	10mm	1-3	TOP3/10TN	busbar support kit	

TOP1000 perforated aluminium profile(12.5mm pitch) (2 metre length)

Accessories

TOP1100	horizontal busbar supports mounting brackets	
TOP1105	vertical busbar supports mounting brackets	
TOP1055	rislan tube (for insulating threaded rods) only req for minimum distance	

Busbar clamps (zinc, passivated steel 5mm thick)

- permits tap-off of flexible and solid bars, from main bar (without drilling)

type	max. bar width	flexi bar width	description	price
------	----------------	-----------------	-------------	-------

Rectangular

SBR1000	50mm	20/24mm	busbar tap-off clamps	
SBR1005	50mm	32mm	busbar tap-off clamps	
SBR1010	50mm	40mm	busbar tap-off clamps	
SBR1020	80mm	32mm	busbar tap-off clamps	
SBR1025	80mm	50mm	busbar tap-off clamps	

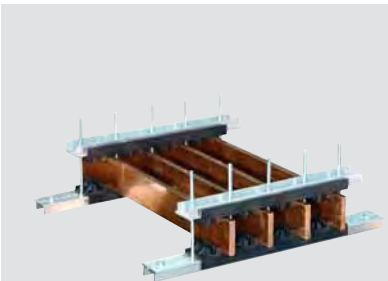
Square

SBQ1000	30mm	30mm	busbar tap-off clamps	
SBQ1005	40mm	40mm	busbar tap-off clamps	
SBQ1015	63mm	63mm	busbar tap-off clamps	
SBQ1020	80mm	80mm	busbar tap-off clamps	
SBQ1025	100mm	100mm	busbar tap-off clamps	

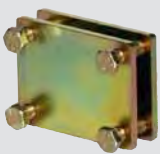
Insulated busbar supports 250 - 400A (multi-pole)

- glass fibre reinforced, self extinguishing to UL94VO
- working temperature: -40°C ~ 130°C, glow wire test: 960°C
- M6 screws included to fasten bars
- for threaded busbars (see page below)

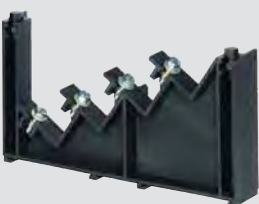
PSP250	250A	4 pole	insulated support (for 15/20x5 threaded bar) ea	
PSP400	400A	4 pole	insulated support (for 20/30x5 threaded bar) pair	



TOP...



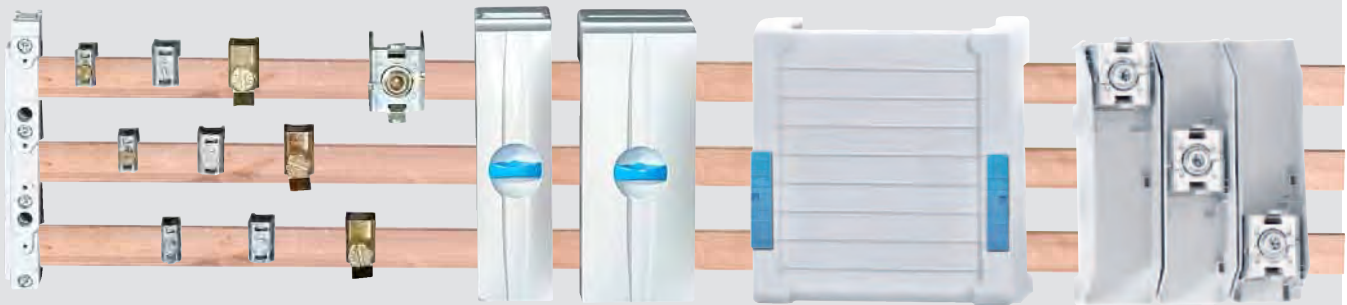
SBR...



PSP400



Busbar systems and accessories



Busbar Supports (for horizontal mounting of bars 15/20/25/30mm wide)

type	for busbar size (mm)		no. poles	description	amps	price
	wide	thick				
01601	15-30mm	5/10mm	1	universal busbar support	630A	
01356	15-30mm	5/10mm	2	universal busbar support	630A	
01495	15-30mm	5/10mm	3	universal busbar support	630A	
01485	15-30mm	5/10mm	4	universal busbar support	630A	

"H" profile busbar supports

01116*	30mm	"H" profile	1	"H" profile busbar support	1600A	
01231	30mm	"H" profile	3	"H" profile busbar support	1600A	

* attaches to 01231 or can be mounted individually

End covers for busbar supports

01573	end cover for		3	busbar support	01495	(ea)
01131	end cover for		4	set right and left	01485	(pr)
01234	end cover for		3	"H" profile busbar support	01231	(ea)

Busbar termination (for direct clamping onto busbars - no drilling) 1 Phase

- clip-on terminals for cable conductors

type	for busbar size (mm)		cable size mm ²		description	amps
	wide	thick	min	max		
01284	15-30mm	5mm	1.5 -	16mm ²	1P cable conductor terminal	180A
01285	15-30mm	5mm	4 -	35mm ²	1P cable conductor terminal	270A
01287	15-30mm	5mm	16 -	70mm ²	1P cable conductor terminal	400A
01289	15-30mm	10mm	1.5 -	16mm ²	1P cable conductor terminal	180A
01290	15-30mm	10mm	4 -	35mm ²	1P cable conductor terminal	270A
01292	15-30mm	10mm	16 -	70mm ²	1P cable conductor terminal	400A
01203	15-30mm	10mm	16 -	120mm ²	1P cable conductor terminal	440A

CRITO proficlip, brace terminals (for 5mm, 10mm and "H" profile bars)

01318	20-30mm	5/10/"H"	95 -	185mm ²	1P cable conductor terminals	500A
01760	20-30mm	5/10/"H"	120 -	300mm ²	1P cable conductor terminals	600A

3 Phase clamp-on terminals (fully insulated, internally partitioned)

For bars 12/15/20/25/30mm x 5/10mm or "H" profile

01563	12-30mm	5/10mm	1.5 -	16mm ²	3P cable conductor terminal	80A
01240	12-30mm	5/10/"H"	6 -	50mm ²	3P cable conductor terminal	300A
01243	12-30mm	5/10/"H"	35 -	120mm ²	3P cable conductor terminal	440A
01199	20-30mm	5/10/"H"	95 -	185mm ²	3P cable conductor terminal	460A
01537*	20-30mm	5/10/"H"	120 -	300mm ²	3P cable conductor terminal	560A

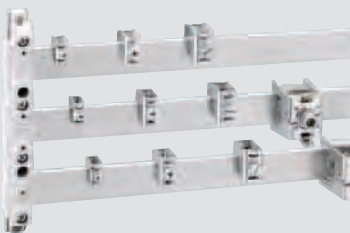
* adjustable phase separation distance - supplied without cover

Conductor terminals for connecting solid or flexible bars directly to Busbar System 1 Phase

type	for busbar size		terminal space		description	amps
	wide	thick	wide	high		
01319	20-30mm	5/10/"H"	30 -	20mm	1P conductor terminal	750A
01069	20-30mm	5/10/"H"	55 -	28mm	1P conductor terminal	1600A
01070	20-30mm	5/10/"H"	68 -	28mm	1P conductor terminal	1600A
01071	20-30mm	5/10/"H"	105 -	28mm	1P conductor terminal	1600A

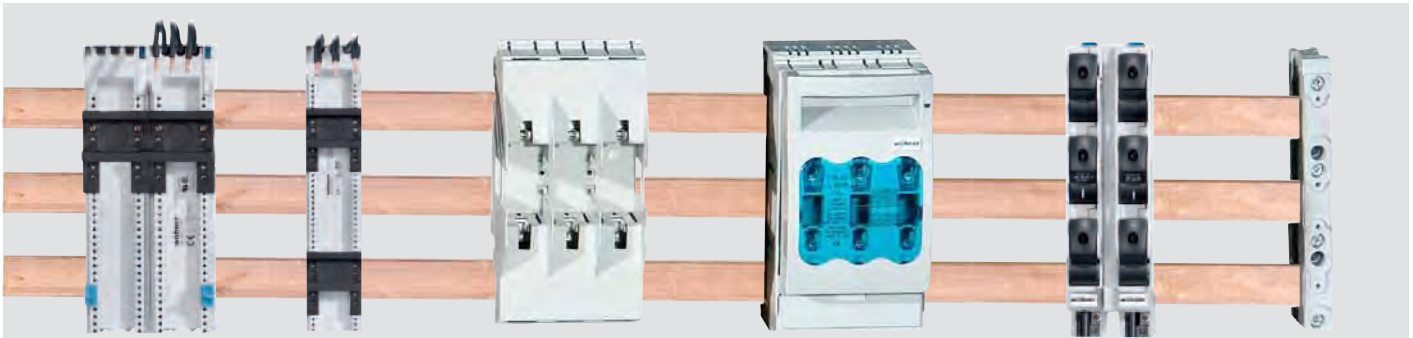
3 Phase Conductor terminals

01538	20-30mm	5/10/"H"	32 -	20mm	3P conductor terminal	800A
--------------	---------	----------	------	------	-----------------------	------





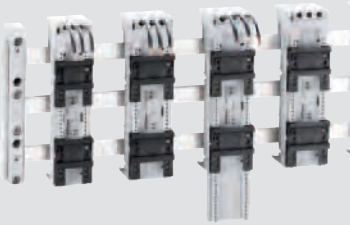
Busbar systems and accessories



Eques easy connector (clamps and terminates directly onto busbar - no drilling)

Includes: DIN rail supports for circuit breakers, contactors, fuse holders conductors from base are directly connected to busbars, for busbars 15/20/25/30mm wide

type	for busbar size wide	thick	terminal mm ²	dimensions H x W	amperage	price
32431	15-30mm	5/10"/"H"	4mm ²	45 x 200	2 rails 25A	
32442	15-30mm	5/10"/"H"	6mm ²	54 x 200	2 rails 32A	
32455	15-30mm	5/10"/"H"	10mm ²	54 x 200	2 rails 63A	
32459	15-30mm	5/10"/"H"	10mm ²	81 x 200	2 rails 63A	



Universal Busbar adaptor (to accomodate MCCB's and switcgear)

• for commercially available switchgear M4 fixing screws

32214	20-30mm	5/10"/"H"	clamp term.	222 x 108	200A
32168	20-30mm	5/10"/"H"	clamp term.	320 x 110	250A
32004	20-30mm	5/10"/"H"	clamp term.	320 x 238	630A

Busbar Mounted Fuse bases (clamp-on terminates on busbar)

10 x 38 Cylindrical Fuse Bases

31954	20-30mm	5/10"/"H"	spring term.	3pole	fuse holder	32A
-------	---------	-----------	--------------	-------	-------------	-----

NH DIN (blade type fuse bases)

03656	20-30mm	5/10"/"H"	M8 screw	size "00"	fuse holder	160A
03704	20-30mm	5/10"/"H"	M10 screw	size "1"	fuse holder	250A
03693	20-30mm	5/10"/"H"	M10 screw	size "2"	fuse holder	400A



Accessories

79448	grip-lug protection cover for size "00" fuses (1 per fuse)					(ea)
79449	grip-lug protection cover for size "1-3" fuses (2 per fuse)					(per pair)

Busbar Mounted 3 Pole Fuse Switch Disconnectors

10 x 38 Cylindrical Fuse Switch

31232	20-30mm	5/10"/"H"	clamp term.	3pole	fuse switch	32A
-------	---------	-----------	-------------	-------	-------------	-----

Busbar covers (for finger touch protection of bubars)

Single cover (clips directly onto busbar) 1meter length

01245	single busbar cover (1 meter) clips directly onto busbar 10x30
01252	single busbar cover (1 meter) clips directly onto busbar "H" profile

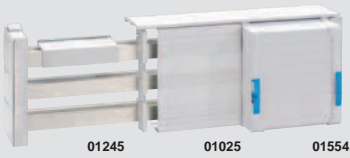
Reserve section cover (used to cover 3 pole busbars-requires 2 x supports 01026)

01025	reserve section cover (1100mm)	requires 01026 supports
01026	support for reserve section cover (01025) 15/20/25/30 x 5/10"/"H"	

System cover (can be used to make-up any sized cover for bars, terminals etc.)

• mounts directly onto busbars 15/20/25/30 x 5/10"/"H" (88mm deep cover)

01554	front cover section (1100mm)	requires 01136 supports
01555	upper/lower section (1100mm)	requires 01136 supports
01136	holder set (left + right) for cover 15/20/25/30 x 5/10"/"H"	





Busbar systems and accessories



100/185mm system technology 1250/1600A

- silicone-free, chlorine-free
- self extinguishing to UL94VO
- creepage resistance CTI 200
- temperature stability 120°C
- up to 80kA fault level

type	for busbar size (mm) wide	thick	no. poles	description	amperage	price
------	------------------------------	-------	--------------	-------------	----------	-------

100mm System (100mm distance between busbar centres)

01479	30/40/50/60	10	3	universal busbar support	1250A	
01245	end cover for busbar support 3p			01749		

185mm System (185mm distance between busbar centres)

01230	30 - 120	10"/"H" profile	3	universal busbar support	1600A	
33341	end cover for busbar support 3p			01230		

Surface/rail mount fuse holders and fuse switch disconnectors

AMBUS easy switch cylindrical fuse holder
Holder for cylindrical fuses with box terminals

- modular rail mounting, shock protection to DIN VDE 0660/IEC/EN 60947-3
- silicone-free, chlorine-free
- self extinguishing to UL94
- Creepage resistance CTI 200

type	rated current	poles	fuse size	description	width in 17.5mm	price
------	---------------	-------	-----------	-------------	-----------------	-------

31110	32A	1	10x38	cylindrical fuseholder	1	
31113	32A	3	10x38	cylindrical fuseholder	3	
31115	50A	1	14x51	cylindrical fuseholder	1.5	
31118	50A	3	14x51	cylindrical fuseholder	4.5	
31120	125A	1	22x58	cylindrical fuseholder	2	
31123	125A	3	22x58	cylindrical fuseholder	6	

Quadron Volbreaker

NH fuseswitch disconnectors
3 pole switching DIN VDE 0660-IEC/EN 60947-3

- shock protection with intergrated positive action closure and arc chambers
- fuses with mechanical retention in disconnector lid
- degree of protection IP30 (front)
- silicone-free, chlorine-free
- temperature stability (size 000,00) 120°C (size 1,2,3) 150°C
- self extinguishing to UL94

33217	125A	3	C00(000)	DIN(blade)fuseswitch disconnector		
33222	160A	3	C00	DIN(blade)fuseswitch disconnector		
33201	250A	3	1	DIN(blade)fuseswitch disconnector		
33202	400A	3	2	DIN(blade)fuseswitch disconnector		
33203	630A	3	3	DIN(blade)fuseswitch disconnector		
33204	1600A	3	4	DIN(blade)fuseswitch disconnector		

Quadron Volbreak NH bus-mounting, fuse switch disconnector

33216	20-30mm	5/10"/"H"	50mm ²	size "000" fuse switch	125A	
33198	20-30mm	5/10"/"H"	70mm ²	size "00" fuse switch	160A	
33601	20-30mm	5/10"/"H"	120mm ²	size "1" fuse switch	250A	
33602	20-30mm	5/10"/"H"	240mm ²	size "2" fuse switch	400A	
33603	20-30mm	5/10"/"H"	2x185mm ²	size "3" fuse switch	630A	



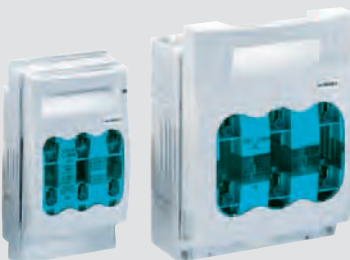
31110



31115



31118



33201

33203