



Current transformers

The MES range of current transformers incorporate hinged terminal covers are recognised by the distinct blue colour and can be mounted directly onto panel or DIN rail mounted (with provided accessories)

Primary Current : 5A-4000A
 Secondary Current : 5A
 Maximum voltage : 0.72/3 kV
 Frequency : 50 - 60 Hz
 Class : 0.5,1.0
 Short-time thermal current : $I_{th} = 60 \times I_n$

new

Supplied with DIN rail mounting bracket for horizontal or vertical mounting.



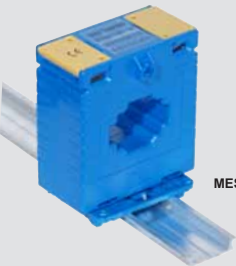
MES-80/40



MES-62/30



MES-62/40



MES-62/20B



MES-145

Busbar type Current transformers

• MES-62/20B supplied with incorporated busbar primary connection (H) 80 x (W) 62 x (D) 47mm

type	rated current / 5A	hole size (class1)	VA	description	price
MES-62/20B05	5A	busbar	5VA	bar type CT	
MES-62/20B10	10A	busbar	5VA	bar type CT	
MES-62/20B15	15A	busbar	5VA	bar type CT	
MES-62/20B20	20A	busbar	5VA	bar type CT	
MES-62/20B25	25A	busbar	5VA	bar type CT	
MES-62/20B30	30A	busbar	5VA	bar type CT	
MES-62/20B40	40A	busbar	5VA	bar type CT	

MES Ring-type Current transformers

• MES-62/30 (H) 80 x (W) 62 x (D) 47mm; busbar : 30x10 / 25x20mm

MES-62/30030	30A	30mmØ	1VA	ring type CT	
MES-62/30040	40A	30mmØ	1VA	ring type CT	
MES-62/30050	50A	30mmØ	1VA	ring type CT	
MES-62/30060	60A	30mmØ	1.5VA	ring type CT	
MES-62/30075	75A	30mmØ	1.5VA	ring type CT	
MES-62/30100	100A	30mmØ	2.5VA	ring type CT	

• MES-62/40 (H) 80 x (W) 62 x (D) 47mm; busbar : 40x10 / 30x20mm

MES-62/40150	150A	30mmØ	2.5VA	ring type CT	
MES-62/40200	200A	30mmØ	5VA	ring type CT	
MES-62/40250	250A	30mmØ	5VA	ring type CT	
MES-62/40300	300A	30mmØ	7.5VA	ring type CT	

• MES-80/40 (H) 88 x (W) 80 x (D) 52mm; busbar : 40x10 / 30x20mm

MES-80/40400	400A	30mmØ	15VA	ring type CT	
MES-80/40500	500A	30mmØ	15VA	ring type CT	

• MES-100/60 (H) 117 x (W) 101 x (D) 57mm; busbar : 60x10 / 50x30mm

MES-100/60400	400A	50mmØ	20VA	ring type CT	
MES-100/60500	500A	50mmØ	20VA	ring type CT	
MES-100/60600	600A	50mmØ	20VA	ring type CT	
MES-100/60800	800A	50mmØ	20VA	ring type CT	

• MES-145/100 (H) 155 x (W) 145 x (D) 54mm; busbar : 100x30 / 80x50mm

MES-145/10800	800A	88mmØ	30VA	ring type CT	
MES-145/11000	1000A	88mmØ	30VA	ring type CT	
MES-145/11250	1250A	88mmØ	30VA	ring type CT	
MES-145/11600	1600A	88mmØ	30VA	ring type CT	
MES-145/12000	2000A	88mmØ	30VA	ring type CT	
MES-145/12500	2500A	88mmØ	30VA	ring type CT	
MES-145/13000	3000A	88mmØ	30VA	ring type CT	
MES-145/14000	4000A	88mmØ	30VA	ring type CT	

Current transformers

BE series current transformers

Operating frequency	: 40-60Hz
Overload withstand	: 1.2 In
Rated dynamic current	: 2.5 Ith (for 1sec)
Degree of protection	: IP30
Ambient limits	: -25...+50°C

type	range	description	hole size	(VA) class (5A out)	price	
					__/1A	__/5A

MCT Mini ring type (compact dimensions)

Termination	: fast-on (insulated terminals included)
Mounting	: screw or 35mm DIN rail (mounting kit included)

MCT20 Mini ring type (H) 66 x (W) 53 x (D) 28mm

DX-20/05/*	50A	ring type CT	21mm Ø	1.5	1		
DX-20/06/*	60A	ring type CT	21mm Ø	2	1		
DX-20/07/*	75A	ring type CT	21mm Ø	2.5	1		
DX-20/10/*	100A	ring type CT	21mm Ø	2.5	1		

MCT30 Mini ring type (H) 66 x (W) 53 x (D) 28mm (30 x 10/25 x 12.5/20 x 15mm bars)

DX-30/10/*	100A	ring type CT	23mm Ø	1.5	1		
DX-30/15/*	150A	ring type CT	23mm Ø	1.5	1		
DX-30/20/*	200A	ring type CT	23mm Ø	2.5	1		
DX-30/25/*	250A	ring type CT	23mm Ø	2.5	1		
DX-30/30/*	300A	ring type CT	23mm Ø	3	1		

MCT40 Mini ring type (H) 81 x (W) 71 x (D) 45mm (40 x 10/30 x 20/25 x 25mm bars)

DX-40/25/*	250A	ring type CT	30mm Ø	5	1		
DX-40/40/*	400A	ring type CT	30mm Ø	5	1		
DX-40/50/*	500A	ring type CT	30mm Ø	5	1		
DX-40/60/*	600A	ring type CT	30mm Ø	5	1		
DX-40/80/*	800A	ring type CT	30mm Ø	10	1		

* replace with secondary current (1 or 5)

DP88 range split core current transformers

The DP range of Split-core current transformers are designed to facilitate installation in new or already existing networks. They permit simple installation into systems without having to disconnect cables or busbars, saving time and costs.

DP23/100	100A	split-core CT	20 x 30mm	-	0.5		
DP23/200	200A	split-core CT	20 x 30mm	-	0.5		
DP58/250	250A	split-core CT	50 x 80mm	1.5	0.5		
DP58/300	300A	split-core CT	50 x 80mm	1.5	0.5		
DP58/400	400A	split-core CT	50 x 80mm	1.5	0.5		
DP88/500	500A	split-core CT	80 x 80mm	2.5	0.5		
DP88/600	600A	split-core CT	80 x 80mm	2.5	0.5		
DP88/800	800A	split-core CT	80 x 80mm	2.5	0.5		
DP88/1000	1000A	split-core CT	80 x 80mm	5.0	0.5		
DP812/1250	1250A	split-core CT	80 x 120mm	7.5	0.5		
DP812/1500	1500A	split-core CT	80 x 120mm	7.5	0.5		
DP816/2000	2000A	split-core CT	80 x 160mm	15	0.5		
DP816/2500	2500A	split-core CT	80 x 160mm	15	0.5		
DP816/3000	3000A	split-core CT	80 x 160mm	20	0.5		
DP816/4000	4000A	split-core CT	80 x 160mm	20	0.5		



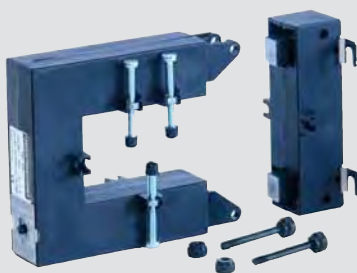
MCT20



MCT30








MCT40



DP88/600



Current transformers

	type	range	description	hole size	(VA)	class	price _/_/5A
	Mini ring type (H) 87 x (W) 64 x (D) 41 (terminal cover / DIN rail-screw mount)						
 IMR1	IMR1/05	50A	ring type CT	32mm Ø	1.5	3	
	IMR1/07	75A	ring type CT	32mm Ø	2.5	3	
	IMR1/10	100A	ring type CT	32mm Ø	1.5	1	
	IMR1/15	150A	ring type CT	32mm Ø	5	1	
	IMR1/20	200A	ring type CT	32mm Ø	7.5	1	
	IMR1/25	250A	ring type CT	32mm Ø	10	1	
	IMR1/30	300A	ring type CT	32mm Ø	15	1	
	Ring type (H) 98 x (W) 73 x (D) 41 (terminal cover/DIN rail-screw mount)						
 IMR2	IMR2/25	250A	ring type CT	40 x 12.5mm	10	1	
	IMR2/30	300A	ring type CT	40 x 12.5mm	15	1	
	IMR2/40	400A	ring type CT	40 x 12.5mm	15	1	
	IMR2/50	500A	ring type CT	40 x 12.5mm	15	1	
	IMR2/60	600A	ring type CT	40 x 12.5mm	15	1	
	Large ring type (H) 128 x (W) 104 x (D) 44						
 IBR1	IBR1/05	500A	ring type CT	65 x 20mm	15	1	
	IBR1/06	600A	ring type CT	65 x 20mm	15	1	
	IBR1/07	750A	ring type CT	65 x 20mm	15	1	
	IBR1/08	800A	ring type CT	65 x 20mm	15	1	
	IBR1/10	1000A	ring type CT	65 x 20mm	20	1	
	IBR1/12	1250A	ring type CT	65 x 20mm	25	1	
	IBR1/15	1500A	ring type CT	65 x 20mm	30	1	
	IBR1/20	2000A	ring type CT	65 x 20mm	30	1	
	Large ring type (H) 154 x (W) 154 x (D) 44						
 IBR3	IBR3/10	1000A	ring type CT	100mm Ø	15	0.2	
	IBR3/12	1250A	ring type CT	100mm Ø	15	0.2	
	IBR3/15	1500A	ring type CT	100mm Ø	15	0.2	
	IBR3/20	2000A	ring type CT	100mm Ø	30	0.2	
	IBR3/25	2500A	ring type CT	100mm Ø	30	0.2	
	IBR3/30	3000A	ring type CT	100mm Ø	30	0.2	
	Primary wound CTs (H) 105 x (W) 48 x (D) 32						
 ISWP	ISWP/05	5A	primary wound CT		2.5	1	
	ISWP/10	10A	primary wound CT		2.5	1	
	ISWP/15	15A	primary wound CT		2.5	1	
	ISWP/20	20A	primary wound CT		2.5	1	
	ISWP/25	25A	primary wound CT		2.5	1	
	ISWP/30	30A	primary wound CT		2.5	1	
	ISWP/40	40A	primary wound CT		2.5	1	
	ISWP/50	50A	primary wound CT		2.5	1	