



## Industrial plugs and sockets

### New Optima series 16A-32A-63A-125A

- insulation voltage : 690V AC
- protection degree : IP44 and IP67
- operating temperature : -25°C to 40°C (max operating temperature 60°C)
- glow wire test : 650°C / 850°C
- material : engineering plastic (halogen free)
- impact resistance : IK08 (1.7kg with a striking energy of 2J)
- cable inlet : external cable stay with tulip clamping IP67 gland (optima series)



213.1633



213.3236



221.1633



226.1636



313.1643



318.3246

type	amperage	pin configuration	protection		description	cable out	price
			IP44	IP66			
<b>Male plugs (straight cable exit)</b>							
213.1633	16A	2P+E (3 Pin)	●		male plug	straight	
213.1636	16A	3P+E (4 Pin)	●		male plug	straight	
213.1637	16A	3P+N+E (5 Pin)	●		male plug	straight	
213.3233	32A	2P+E (3 Pin)	●		male plug	straight	
213.3236	32A	3P+E (4 Pin)	●		male plug	straight	
213.3237	32A	3P+N+E (5 Pin)	●		male plug	straight	
218.1633	16A	2P+E (3 Pin)		●	male plug	straight	
218.1636	16A	3P+E (4 Pin)		●	male plug	straight	
218.1637	16A	3P+N+E (5 Pin)		●	male plug	straight	
218.3233	32A	2P+E (3 Pin)		●	male plug	straight	
218.3236	32A	3P+E (4 Pin)		●	male plug	straight	
218.3237	32A	3P+N+E (5 Pin)		●	male plug	straight	
218.6333	63A	2P+E (3 Pin)		●	male plug	straight	
218.6336	63A	3P+E (4 Pin)		●	male plug	straight	
218.6337	63A	3P+N+E (5 Pin)		●	male plug	straight	
218.12533	125A	2P+E (3 Pin)		●	male plug	straight	
218.12536	125A	3P+E (4 Pin)		●	male plug	straight	
218.12537	125A	3P+N+E (5 Pin)		●	male plug	straight	

### Male plugs (90° cable exit) Eureka series - cable sleeve 16A-32A

221.1633	16A	2P+E (3 Pin)	●		male plug	90° angled	
221.1636	16A	3P+E (4 Pin)	●		male plug	90° angled	
221.1637	16A	3P+N+E (5 Pin)	●		male plug	90° angled	
221.3233	32A	2P+E (3 Pin)	●		male plug	90° angled	
221.3236	32A	3P+E (4 Pin)	●		male plug	90° angled	
221.3237	32A	3P+N+E (5 Pin)	●		male plug	90° angled	
226.1633	16A	2P+E (3 Pin)		●	male plug	90° angled	
226.1636	16A	3P+E (4 Pin)		●	male plug	90° angled	
226.1637	16A	3P+N+E (5 Pin)		●	male plug	90° angled	
226.3233	32A	2P+E (3 Pin)		●	male plug	90° angled	
226.3236	32A	3P+E (4 Pin)		●	male plug	90° angled	
226.3237	32A	3P+N+E (5 Pin)		●	male plug	90° angled	

### Connectors/couplers (female inline socket) new Optima series 16A-32A-63A-125A

313.1643	16A	2P+E (3 Pin)	●		connector	straight	
313.1646	16A	3P+E (4 Pin)	●		connector	straight	
313.1647	16A	3P+N+E (5 Pin)	●		connector	straight	
313.3243	32A	2P+E (3 Pin)	●		connector	straight	
313.3246	32A	3P+E (4 Pin)	●		connector	straight	
313.3247	32A	3P+N+E (5 Pin)	●		connector	straight	
318.1643	16A	2P+E (3 Pin)		●	connector	straight	
318.1646	16A	3P+E (4 Pin)		●	connector	straight	
318.1647	16A	3P+N+E (5 Pin)		●	connector	straight	
318.3243	32A	2P+E (3 Pin)		●	connector	straight	
318.3246	32A	3P+E (4 Pin)		●	connector	straight	
318.3247	32A	3P+N+E (5 Pin)		●	connector	straight	
318.6343	63A	2P+E (3 Pin)		●	connector	straight	
318.6346	63A	3P+E (4 Pin)		●	connector	straight	
318.6347	63A	3P+N+E (5 Pin)		●	connector	straight	
318.12543	125A	2P+E (3 Pin)		●	connector	straight	
318.12546	125A	3P+E (4 Pin)		●	connector	straight	
318.12547	125A	3P+N+E (5 Pin)		●	connector	straight	



## Industrial plugs and sockets



243.3296

**new**



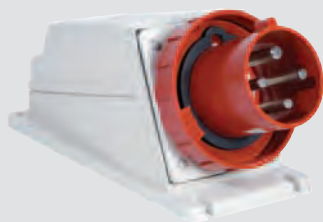
243.3297



248.3296



242.1696



245.6396



412.1663



415.6367

type	amperage	pin configuration		protection		flange	price
				IP44	IP67		
<b>Appliance inlets (panel-mount male inlets)</b>							
<b>Optima straight male inlets 16A-32A</b>							
243.1693	16A	2P+E	(3 Pin)	●		appliance inlet (75x75)	
243.1696	16A	3P+E	(4 Pin)	●		appliance inlet (75x75)	
243.1697	16A	3P+N+E	(5 Pin)	●		appliance inlet (75x75)	
243.3293	32A	2P+E	(3 Pin)	●		appliance inlet (75x75)	
243.3296	32A	3P+E	(4 Pin)	●		appliance inlet (75x75)	
243.3297	32A	3P+N+E	(5 Pin)	●		appliance inlet (75x75)	
248.1693	16A	2P+E	(3 Pin)	●	●	appliance inlet (75x75)	
248.1696	16A	3P+E	(4 Pin)	●	●	appliance inlet (75x75)	
248.1697	16A	3P+N+E	(5 Pin)	●	●	appliance inlet (75x75)	
248.3293	32A	2P+E	(3 Pin)	●	●	appliance inlet (75x75)	
248.3296	32A	3P+E	(4 Pin)	●	●	appliance inlet (75x75)	
248.3297	32A	3P+N+E	(5 Pin)	●	●	appliance inlet (75x75)	
246.6393	63A	2P+E	(3 Pin)	●	●	appliance inlet (100x100)	
246.6396	63A	3P+E	(4 Pin)	●	●	appliance inlet (100x100)	
246.6397	63A	3P+N+E	(5 Pin)	●	●	appliance inlet (100x100)	
246.12593	125A	2P+E	(3 Pin)	●	●	appliance inlet (100x100)	
246.12596	125A	3P+E	(4 Pin)	●	●	appliance inlet (100x100)	
246.12597	125A	3P+N+E	(5 Pin)	●	●	appliance inlet (100x100)	
<b>Eureka series 90° angled male inlets 16A-32A</b>							
242.1693	16A	2P+E	(3 Pin)	●		appliance inlet 90° (70x87)	
242.1696	16A	3P+E	(4 Pin)	●		appliance inlet 90° (70x87)	
242.1697	16A	3P+N+E	(5 Pin)	●		appliance inlet 90° (70x87)	
242.3293	32A	2P+E	(3 Pin)	●		appliance inlet 90° (70x87)	
242.3296	32A	3P+E	(4 Pin)	●		appliance inlet 90° (70x87)	
242.3297	32A	3P+N+E	(5 Pin)	●		appliance inlet 90° (70x87)	
247.1693	16A	2P+E	(3 Pin)	●	●	appliance inlet 90° (70x87)	
247.1696	16A	3P+E	(4 Pin)	●	●	appliance inlet 90° (70x87)	
247.1697	16A	3P+N+E	(5 Pin)	●	●	appliance inlet 90° (70x87)	
247.3293	32A	2P+E	(3 Pin)	●	●	appliance inlet 90° (70x87)	
247.3296	32A	3P+E	(4 Pin)	●	●	appliance inlet 90° (70x87)	
247.3297	32A	3P+N+E	(5 Pin)	●	●	appliance inlet 90° (70x87)	
<b>Surface-mount angled male appliance inlets 63A-125A</b>							
245.6393	63A	2P+E	(3 Pin)	●	●	appliance inlet surface	
245.6396	63A	3P+E	(4 Pin)	●	●	appliance inlet surface	
245.6398	63A	3P+N+E	(5 Pin)	●	●	appliance inlet surface	
245.12593	125A	2P+E	(3 Pin)	●	●	appliance inlet surface	
245.12596	125A	3P+E	(4 Pin)	●	●	appliance inlet surface	
245.12597	125A	3P+N+E	(5 Pin)	●	●	appliance inlet surface	
<b>Socket outlets (panel mount female) 16A-32A-63A-125A 18° angled</b>							
412.1663	16A	2P+E	(3 Pin)	●		angled socket (70x87)	
412.1666	16A	3P+E	(4 Pin)	●		angled socket (70x87)	
412.1667	16A	3P+N+E	(5 Pin)	●		angled socket (70x87)	
412.3263	32A	2P+E	(3 Pin)	●		angled socket (84x106)	
412.3266	32A	3P+E	(4 Pin)	●		angled socket (84x106)	
412.3267	32A	3P+N+E	(5 Pin)	●		angled socket (84x106)	
417.1663	16A	2P+E	(3 Pin)	●	●	angled socket (70x87)	
417.1666	16A	3P+E	(4 Pin)	●	●	angled socket (70x87)	
417.1667	16A	3P+N+E	(5 Pin)	●	●	angled socket (70x87)	
417.3263	32A	2P+E	(3 Pin)	●	●	angled socket (84x106)	
417.3266	32A	3P+E	(4 Pin)	●	●	angled socket (84x106)	
417.3267	32A	3P+N+E	(5 Pin)	●	●	angled socket (84x106)	
415.6363	63A	2P+E	(3 Pin)	●	●	angled socket (100x100)	
415.6366	63A	3P+E	(4 Pin)	●	●	angled socket (100x100)	
415.6367	63A	3P+N+E	(5 Pin)	●	●	angled socket (100x100)	
415.12563	125A	2P+E	(3 Pin)	●	●	angled socket (114x114)	
415.12566	125A	3P+E	(4 Pin)	●	●	angled socket (114x114)	
415.12567	125A	3P+N+E	(5 Pin)	●	●	angled socket (114x114)	

Surface-mountable using boxes on pg 122



## Industrial plugs and sockets



422.1667



422.3266



452.1663



452.3266



513.3256



513.1653TH

new

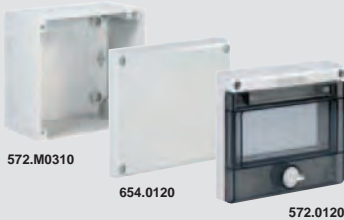
new

type	amperage	pin configuration		protection		description	flange	price
				IP44	IP66			
<b>Straight sockets panel mount 16A-32A reduced flange (75x75mm)</b>								
422.1663	16A	2P+E	(3 Pin)	●		straight socket	(75x75)	
422.1666	16A	3P+E	(4 Pin)	●		straight socket	(75x75)	
422.1667	16A	3P+N+E	(5 Pin)	●		straight socket	(75x75)	
422.3263	32A	2P+E	(3 Pin)	●		straight socket	(75x75)	
422.3266	32A	3P+E	(4 Pin)	●		straight socket	(75x75)	
422.3267	32A	3P+N+E	(5 Pin)	●		straight socket	(75x75)	
427.1663	16A	2P+E	(3 Pin)		●	straight socket	(75x75)	
427.1666	16A	3P+E	(4 Pin)		●	straight socket	(75x75)	
427.1667	16A	3P+N+E	(5 Pin)		●	straight socket	(75x75)	
427.3263	32A	2P+E	(3 Pin)		●	straight socket	(75x75)	
427.3266	32A	3P+E	(4 Pin)		●	straight socket	(75x75)	
427.3267	32A	3P+N+E	(5 Pin)		●	straight socket	(75x75)	
<b>90° angled socket outlets 16A-32A</b>								
452.1663	16A	2P+E	(3 Pin)	●		90° angled socket	(70x87)	
452.1666	16A	3P+E	(4 Pin)	●		90° angled socket	(70x87)	
452.1667	16A	3P+N+E	(5 Pin)	●		90° angled socket	(70x87)	
452.3263	32A	2P+E	(3 Pin)	●		90° angled socket	(70x87)	
452.3266	32A	3P+E	(4 Pin)	●		90° angled socket	(70x87)	
452.3267	32A	3P+N+E	(5 Pin)	●		90° angled socket	(70x87)	
457.1663	16A	2P+E	(3 Pin)		●	90° angled socket	(70x87)	
457.1666	16A	3P+E	(4 Pin)		●	90° angled socket	(70x87)	
457.1667	16A	3P+N+E	(5 Pin)		●	90° angled socket	(70x87)	
457.3263	32A	2P+E	(3 Pin)		●	90° angled socket	(70x87)	
457.3266	32A	3P+E	(4 Pin)		●	90° angled socket	(70x87)	
457.3267	32A	3P+N+E	(5 Pin)		●	90° angled socket	(70x87)	
<b>Surface-mount socket outlets</b>								
<b>Base version - IP44</b>								
<ul style="list-style-type: none"> <li>compact, economical, slimline surface-mount socket outlet 16A-32A</li> </ul>								
513.1653	16A	2P+E	(3 Pin)	●		surface mnt socket	M20	
513.1656	16A	3P+E	(4 Pin)	●		surface mnt socket	M25	
513.1657	16A	3P+N+E	(5 Pin)	●		surface mnt socket	M25	
513.3253	32A	2P+E	(3 Pin)	●		surface mnt socket	M32	
513.3256	32A	3P+E	(4 Pin)	●		surface mnt socket	M32	
513.3257	32A	3P+N+E	(5 Pin)	●		surface mnt socket	M32	
<b>Top version IP44 and IP67</b>								
<ul style="list-style-type: none"> <li>compact, flexible, safe socket outlets</li> <li>reversible base (1 or 2 cable outlets top or bottom entry)</li> <li>removeable socket for ease wiring</li> </ul>								
513.1653TH*	16A	2P+E	(3 Pin)	●		surface mnt socket	M20	
513.1656TH*	16A	3P+E	(4 Pin)	●		surface mnt socket	M25	
513.1657TH*	16A	3P+N+E	(5 Pin)	●		surface mnt socket	M25	
513.3253T	32A	2P+E	(3 Pin)	●		surface mnt socket	M32	
513.3256T	32A	3P+E	(4 Pin)	●		surface mnt socket	M32	
513.3257T	32A	3P+N+E	(5 Pin)	●		surface mnt socket	M32	
518.1653TH*	16A	2P+E	(3 Pin)		●	surface mnt socket	M20	
518.1656TH*	16A	3P+E	(4 Pin)		●	surface mnt socket	M25	
518.1657TH*	16A	3P+N+E	(5 Pin)		●	surface mnt socket	M25	
518.3253T	32A	2P+E	(3 Pin)		●	surface mnt socket	M32	
518.3256T	32A	3P+E	(4 Pin)		●	surface mnt socket	M32	
518.3257T	32A	3P+N+E	(5 Pin)		●	surface mnt socket	M32	

\* new with "safe-in" device (safety shutters preventing unsafe direct contact)



## Industrial plugs and sockets



**new**

type	amperage		description	flange	price
<b>Surface housings for panel-mount sockets IP67 (page 120)</b>					
<b>570.M0116</b>	16A	angled box	IP67 for surface sockets	M20	(70 x 87)
<b>570.M0016</b>	16A	straight box	IP67 for surface sockets	M20	(70 x 87)
<b>570.M0132</b>	32A	angled box	IP67 for surface sockets	M25	(84 x 106)
<b>570.M0032</b>	32A	straight box	IP67 for surface sockets	M25	(84 x 106)
<b>570.M0163</b>	63A	angled box	IP67 for surface sockets	M32	(100 x 110)
<b>570.M0125</b>	125A	angled box	IP67 for surface sockets	M63	(114 x 114)

### Switched sockets (interlocked) 16A-32A

- surface mounting (flush mount with rear box removed) IEC 60670
- protection degree : IP44 and IP67 (non ageing elastomer seals)
- max operating temperature : +60°C, (glow wire test - 650°C)
- material : engineers plastic (halogen free) RAL 7035
- impact resistance : IK07 (500g with a striking energy of 2J)
- mechanically interlocked : switch only operates with plug inserted  
: plug cannot be removed with switch "on"

### Omnia series (H) 125 X (W) 136 X (D) 85mm 16A-32A

type	amperage	pin configuration	protection		description	price
			IP44	IP67		
<b>500.M1683</b>	16A	2P+E (3 Pin)	●		switch socket outlet	
<b>500.M1686</b>	16A	3P+E (4 Pin)	●		switch socket outlet	
<b>500.M1687</b>	16A	3P+N+E (5 Pin)	●		switch socket outlet	
<b>500.M3283</b>	32A	2P+E (3 Pin)	●		switch socket outlet	
<b>500.M3286</b>	32A	3P+E (4 Pin)	●		switch socket outlet	
<b>500.M3287</b>	32A	3P+N+E (5 Pin)	●		switch socket outlet	
<b>505.M1683</b>	16A	2P+E (3 Pin)		●	switch socket outlet	
<b>505.M1686</b>	16A	3P+E (4 Pin)		●	switch socket outlet	
<b>505.M1687</b>	16A	3P+N+E (5 Pin)		●	switch socket outlet	
<b>505.M3283</b>	32A	2P+E (3 Pin)		●	switch socket outlet	
<b>505.M3286</b>	32A	3P+E (4 Pin)		●	switch socket outlet	
<b>505.M3287</b>	32A	3P+N+E (5 Pin)		●	switch socket outlet	

### Rectangular shape (H) 275 X (W) 136mm 63A

<b>505.M6383</b>	63A	2P+E (3 Pin)		●	switch socket outlet	
<b>505.M6386</b>	63A	3P+E (4 Pin)		●	switch socket outlet	
<b>505.M6387</b>	63A	3P+N+E (5 Pin)		●	switch socket outlet	

### Omnia accessories

- 572.M0310** surface base box for Omnia 16/32A switch socket
- 654.0120** plain cover for surface box 572.M0310
- 572.0200** flush wall mounting box for Omnia 16/32A switch sockets
- 572.0220** frame (IP55) for flush mounting box 572.0200
- 572.0120** 6 module consumer unit cover for 572.M0310 box

### Container plugs and sockets IP67 63A

- refrigeration container (reefer plugs and sockets)
  - larth terminal 3 H position
  - 32A 3P+E IP67
- |                   |     |              |  |  |                                |            |
|-------------------|-----|--------------|--|--|--------------------------------|------------|
| <b>218.32364</b>  | 32A | 3P+E (4 Pin) |  |  | container straight male plug   |            |
| <b>318.32464</b>  | 32A | 3P+E (4 Pin) |  |  | container straight connector   | (coupler)  |
| <b>417.32664</b>  | 32A | 3P+E (4 Pin) |  |  | panel-mount angled socket      | (84 x 106) |
| <b>427.32664</b>  | 32A | 3P+E (4 Pin) |  |  | panel-mount straight socket    | (75 x 75)  |
| <b>518.32564T</b> | 32A | 3P+E (4 Pin) |  |  | surface-mount socket outlet    |            |
| <b>505.M32864</b> | 32A | 3P+E (4 Pin) |  |  | surface omnia switch socket    |            |
| <b>561.32864</b>  | 32A | 3P+E (4 Pin) |  |  | surface Advance2 switch socket |            |