



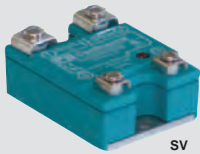
## Solid state relays

SV solid state relays incorporate Superior Surge Survival technology combined with a higher level of factory hardened toughness, generating significantly less heat. These relays lead the industry with new triple layer survivability.

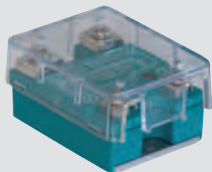
### SV Series

- LED status indicator
- transparent safety cover (included)
- optically isolated
- built-in snubber
- 4000V isolation
- high surge capability
- peak blocking voltage 800V (3V) 1200V (6V)
- zero voltage turn-on
- direct copper bonded SCRs
- EN60947 / UL / CSA

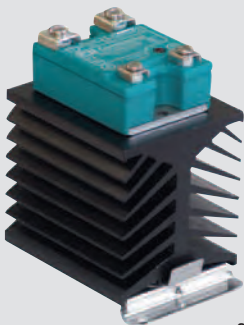
\*adequate heatsinking including consideration of air temperature and flow is essential (see heatsinks below)



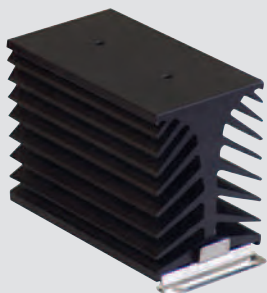
SV



SV



SV+HEATSK1.6



HEATSK1.0

type	control voltage	load current	operational voltage	description	price
------	-----------------	--------------	---------------------	-------------	-------

### DC control

<b>SVDA/3V10</b>	4-32 VDC	10A	24-330 VAC	solid state relay	
<b>SVDA/3V25</b>	4-32 VDC	25A	24-330 VAC	solid state relay	
<b>SVDA/3V50</b>	4-32 VDC	50A	24-330 VAC	solid state relay	
<b>SVDA/3V75</b>	4-32 VDC	75A	24-330 VAC	solid state relay	
<b>SVDA/6V50</b>	4-32 VDC	50A	24-660 VAC	solid state relay	
<b>SVDA/6V75</b>	4-32 VDC	75A	24-660 VAC	solid state relay	

### AC control

<b>SVAA/3V10</b>	100-280 VAC	10A	24-330 VAC	solid state relay	
<b>SVAA/3V25</b>	100-280 VAC	25A	24-330 VAC	solid state relay	
<b>SVAA/3V50</b>	100-280 VAC	50A	24-330 VAC	solid state relay	
<b>SVAA/3V75</b>	100-280 VAC	75A	24-330 VAC	solid state relay	
<b>SVAA/6V50</b>	100-280 VAC	50A	24-660 VAC	solid state relay	
<b>SVAA/6V75</b>	100-280 VAC	75A	24-660 VAC	solid state relay	

### DC-in, DC-out relays

<b>SVDD/1V12</b>	4-28 VDC	12A	0-100 VDC	solid state relay	
<b>SVDD/1V20</b>	4-28 VDC	20A	0-100 VDC	solid state relay	
<b>SVDD/1V40</b>	4-28 VDC	40A	0-100 VDC	solid state relay	

### Heat sinks

The above current ratings are based on sufficient cooling provided for the relays

- DIN rail mountable / space saving design
- performance designed for maximum thermal efficiency

type	°C / watt	for relay	description
<b>HEATSK-DIN-1.6</b>	1.6°	10-40A	DIN rail mountable heatsink
<b>HEATSK-DIN-1.0</b>	1.0°	35-75A	DIN rail mountable heatsink

### Thermal transfer pads ( excellent replacement for thermal greases )

**THERMAL-PAD-005** thermal transfer pads to mount between relay & heatsink (5 pcs)