

H

ENCLOSURES AND CLIMATE CONTROL

			H
	Plastic enclosures	H-1	Scame
	Insulated enclosures	H-2	Lovato
	Distribution boards	H-3...5	Hager
	Floor standing distribution boards	H-6...11	Hager
	Busbar system and accessories	H-11...12	Hager
	Sheet metal and polyester enclosures	H-13...14 H-15...16	Hager EM
	Stainless steel enclosures	H-17	EM
	Panel thermostats and heaters	H-18 H-21	Finder Fandis
	Panel ventilation fans and filters	H-18 H-19...20 H-21...22	Finder EM Fandis
	Cabinet air conditioners	H-23...24	Siefert
	Panel lamp (LED)	H-22 H-24	Fandis Siefert



686.204



686.206



686.409



686.230



COMBI 308

Junction boxes for electrical installations (halogen free)

The SCABOX series plastic boxes/enclosures are ideal for housing electrical accessories and terminals for household and fixed electrical installations and offer IP56 degree of protection.

- Max. operating temperature: 60°C
- Colour: RAL 7035 grey (stabilised)
- Material: Self extinguishing thermoplastic
- Reference standards: EN 60439-1, EN 60670-1, EN60670-22

type	IP rating	description	carton qty.	ext. dimension (mm)			price (ea)
				(H)	(W)	(D)	

Plastic housings IP56

Shallow lid

686.204	IP56	PVC housing - opaque lid	40	100	100	50	64.41
686.205	IP56	PVC housing - opaque lid	42	120	80	50	65.56
686.206	IP56	PVC housing - opaque lid	48	150	110	70	98.91
686.207	IP56	PVC housing - opaque lid	30	190	140	70	190.91
686.208*	IP56	PVC housing - opaque lid	16	240	190	90	311.66
686.209*	IP56	PVC housing - opaque lid	8	300	220	120	566.97
686.210*	IP56	PVC housing - opaque lid	4	380	300	120	734.88
686.211*	IP56	PVC housing - opaque lid	1	450	370	130	1 284.60

Deep lid

686.404	IP56	PVC housing - opaque (high) lid	24	100	100	80	100.06
686.408*	IP56	PVC housing - opaque (high) lid	6	240	190	125	411.72
686.409*	IP56	PVC housing - opaque (high) lid	6	300	220	170	702.68
686.410*	IP56	PVC housing - opaque (high) lid	3	380	300	170	1 074.14
686.411*	IP56	PVC housing - opaque (high) lid	1	450	370	180	1 467.45

Transparent cover/ lid

Shallow lid

686.226	IP56	PVC housing - transparent lid	48	150	110	70	223.11
686.227	IP56	PVC housing - transparent lid	30	190	140	70	386.42
686.228*	IP56	PVC housing - transparent lid	16	240	190	90	599.17
686.229*	IP56	PVC housing - transparent lid	8	300	220	120	875.18
686.230*	IP56	PVC housing - transparent lid	4	380	300	120	1 409.95
686.231*	IP56	PVC housing - transparent lid	1	450	370	130	2 022.92

Deep lid

686.428*	IP56	PVC housing - transparent (high) lid	6	240	190	125	722.23
686.429*	IP56	PVC housing - transparent (high) lid	6	300	220	170	1 017.79
686.430*	IP56	PVC housing - transparent (high) lid	3	380	300	170	1 731.96
686.431*	IP56	PVC housing - transparent (high) lid	1	450	370	180	2 389.78

Accessories for above enclosures

Chassis plates (steel)

for enclosures

654.0787	-	chassis plate for enc.	686.207/227	190	140	-	101.21
654.0788	-	chassis plate for enc.	686.208/408/228/428	240	190	-	152.96
654.0789	-	chassis plate for enc.	686.209/409/229/429	300	220	-	221.96
654.0790	-	chassis plate for enc.	686.210/410/230/430	380	300	-	607.22
654.0791	-	chassis plate for enc.	686.211/411/231/431	460	380	-	727.98
654.0080	-	sealing caps for internal mounting holes				(12 pcs)	43.71
654.0085	-	kit to hinge the lid on enclosures				(1 pair)	109.26
654.0021	-	plastic wall mounting brackets				set (4 pcs)	58.66

* Enclosures which accept 654.0085 hinge kit.

COMBI Junction boxes IP66/67 (see page L-31 for all sizes)

Wiska COMBI junction boxes provide ultimate protection from environmental conditions in a compact, very attractive format, suitable for extreme outdoor installations.

- Weather proof, ultraviolet resistant, shatterproof, impact resistant, flame retardant and halogen free
- Integrated thread for cable gland entry without locknuts (308/407/607/1210)

type	cable entry sides	thread rear	thread Ø	description	colour	dimensions (mm)			price
						(H)	(W)	(D)	

COMBI 308 IP66/67 (captive - quick release lid screws)

10060400	8	-	M20	weatherproof junction box	grey	85	85	51	see page L-31 for pricing
10060581	8	-	M20	weatherproof junction box	black	85	85	51	

A - Motor control & drives

Plastic enclosures (IP65)

Lovato M series enclosures are high quality, extremely robust housings ideally suited to indoor or outdoor installations, offering IP65 protection to internally mounted components.

- Protection degree: IP 65
- Operating temperature: -25...+60°C
- Material: Made of UV protected Polycarbonate
- Colour: Black base and RAL7035 (light grey) cover

type	IP rating	cable entry	description	dimensions (mm)			price
				(H)	(W)	(D)	

M1 and M2 series - Housings IP65 (light grey)

Slim, deep housings designed for compact but tall components such as contactors, timers, voltage, liquid level and phase failure relays etc. required to be housed in a protective enclosure without occupying much space.

- External mounting holes
- Incorporated earth terminal
- DIN rail incorporated into internal base of enclosure for mounting electrical components
- Two M20 knock-outs on top and bottom of enclosure (to accommodate gland for cable entry)

M1N	IP65	M20	slim polycarbonate housing	202	88	135	
M2N	IP65	M20	slim polycarbonate housing	234	110	149	

M24 and M25 series - Housings IP65 (light grey)

Robust, heavy duty enclosures for mounting a variety of electrical components.

- Incorporated earth terminal
- Mounting holes within the enclosure (outside the sealing gasket)
- Supplied complete with internal metal chassis plate (156 x 148 mm)
- Moulded (alpha and numeric) grid on internal door for ease of mounting control devices
- Two M25/M32 knock-outs on top and bottom of enclosure (to accommodate gland for cable entry)

M24N	IP65	M25/32	shallow polycarbonate housing	210	175	99	
M25N	IP65	M25/32	deep polycarbonate housing	210	175	165	

Accessories (spare chassis)

MX31	chassis	metal chassis/mounting plate	for M25N enclosures				
-------------	---------	------------------------------	---------------------	--	--	--	--

M3 series - Housings IP65 (light grey)

Robust, heavy duty enclosure with high impact resistance and incorporated hinge facility for mounting a variety of electrical components.

- Material: ABS plastic material
- Incorporated hinge facility (180° full opening) lid can be removed if required
- Mounting holes within the enclosure (outside the sealing gasket)
- Moulded (alpha - numeric) grid on internal door for easy alignment of control devices
- Internal ribbing in base for mounting components - DIN rail etc.
- Plain base (no knockouts) for easy configuration of cable entry/exits

M3N	IP65	–	ABS housing without chassis plate	280	220	170	
MX30	chassis	metal chassis/mounting plate	for M3N enclosures				

Empty metallic housings IP66, IP67 (without any holes)

type	cover	description	dimensions (mm)			price
			(H)	(W)	(D)	

- Material: Aluminium alloy
- Colour: Light grey (base and cover)
- Protection: IEC/EN: IP66 and IP67
UL: Nema 4X
- Earth connection: On base and cover
- Ambient conditions: -25...+70°C
- Compliant: IEC/EN/BS 60947-5-1, cULus

LPZ M1E8	grey	empty aluminium alloy housing only	80	80	73	581.92
LPZ M2E8	grey	empty aluminium alloy housing only	130	80	73	725.68
LPZ M3E8	grey	empty aluminium alloy housing only	170	80	73	865.98
LPZ M5E8	grey	empty aluminium alloy housing only	160	160	90	1 573.25
LPZ M6E8	grey	empty aluminium alloy housing only	170	190	90	1 717.01
LPZ M7E8	grey	empty aluminium alloy housing only	190	250	90	2 050.52



M1N



M24N



M3N



LPZ M6E8

see page
A-8 for
pricing.



Enclosures / Distribution boards

type	no. of ways	IP rating	description	dimensions (mm)			price
				(H)	(W)	(D)	
Mini gamma series (surface shrouds)			IP30				
<ul style="list-style-type: none"> Incorporated DIN profile and labelling facility Hinged transparent doors available (<i>IP40 with door</i>) Lead sealable housing 							
GD102B	2 way	IP30	surface mounting MCB shroud	160	55	82	79.36
GD104B	4 way	IP30	surface mounting MCB shroud	180	110	82	106.96
GD106B	6 way	IP30	surface mounting MCB shroud	180	146	82	126.51
GD110B	10 way	IP30	surface mounting MCB shroud	180	218	82	261.06
Accessories for above GD series boards							
GP102T	door	–	transparent (<i>horizontally</i>) hinged door	for	GD102B		141.46
GP104T	door	–	transparent (<i>horizontally</i>) hinged door	for	GD104B		159.86
GP106T	door	–	transparent (<i>horizontally</i>) hinged door	for	GD106B		169.06
GP110T	door	–	transparent (<i>horizontally</i>) hinged door	for	GD110B		187.46
GZ104S	support	–	clip-in support for terminals GZ04E/N	for	GD104B		28.76
GZ106S	support	–	clip-in support for terminals GZ04E/N	for	GD106B		28.76
GZ110S	support	–	clip-in support for terminals GZ04E/N	for	GD110B		37.96
GZ04E	4 way	terminal	insulated "earth" terminal	<i>(clips onto above supports)</i>			51.76
GZ04N	4 way	terminal	insulated "neutral" terminal	<i>(clips onto above supports)</i>			51.76
JP002	24 way	blanking	blanking strip	<i>(breakable sections) (ea)</i>			71.31

Golf series - Surface and flush-mount distribution boards

- Transparent door 180° opening (*hinged left or right*) / key-lock facility
- Internal cable tie fixing points / cable can be run behind breakers / optional cable retainer clips
- Supplied with earth / neutral terminals
- Colour: RAL9010 (*light grey*) / glow wire test to 650°C to UNE 60595-2-1

Golf VS series - Surface mounting enclosures - IP40 (with door)

- Pre-cut profiles for cable, conduit, trunking entry
- Enclosures can be joined together (*horizontally or vertically*)

VS104TJ	4 (1 x 4)	IP40	surface mounting distribution board	184	138	99	361.12
VS108TJ	8 (1 x 8)	IP40	surface mounting distribution board	184	210	99	434.72
VS112TJ	12 (1 x 12)	IP40	surface mounting distribution board	252	282	99	547.42
VS212TJ	24 (2 x 12)	IP40	surface mounting distribution board	377	282	99	765.93
VS118TJ	18 (1 x 18)	IP40	surface mounting distribution board	252	390	99	677.38
VS218TJ	36 (2 x 18)	IP40	surface mounting distribution board	377	390	99	997.09
VS318TJ	54 (3 x 18)	IP40	surface mounting distribution board	500	390	99	1 128.19

Golf VF series - Flush mounting enclosures - IP40 (with door)

- 72 mm installation depth, can be mounted into "hollow wall" with optional brackets

VF108TJ	8 (1 x 8)	IP40	flush mounting distribution board	225	275	98	462.32
VF112TJ	12 (1 x 12)	IP40	flush mounting distribution board	293	352	98	546.27
VF212TJ	24 (2 x 12)	IP40	flush mounting distribution board	418	352	98	732.58
VF118TJ	18 (1 x 18)	IP40	flush mounting distribution board	293	460	98	632.52
VF218TJ	36 (2 x 18)	IP40	flush mounting distribution board	418	460	98	954.53
VF318TJ	54 (3 x 18)	IP40	flush mounting distribution board	543	460	98	1 117.84

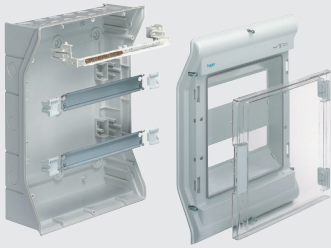
Accessories for Golf series (VS/VF) enclosures

VZ696N	bracket	hollow wall mounting brackets for flush enclosures		<i>(4pcs)</i>		261.06
VZ699N	retainer	cable retaining guides for all enclosures		<i>(4pcs)</i>		248.41
VZ786N	bracket	brick wall fixing brackets for flush enclosures		<i>(4pcs)</i>		96.61
VZ787N	label	spare transparent label holder for all enclosures		<i>(5pcs)</i>		261.06
VZ794N	key	key lock facility for all enclosures		<i>(2pcs)</i>		450.82

Volta series - "Exclusive" flush mounting boards IP41 (class II)

- Metallic front door and frame (*reversible - opening from left or right*)
- Integrated mini spirit level (*installation aid for alignment*)
- 30% more wiring space available
- Supplied with earth / neutral terminals
- Colour: RAL 9010 (*white*)
- IEC 60439-3

VU12NE	12 (1 x 12)	flush mount "exclusive" distribution board	356	348	96	1 120.14
VU24NE	24 (2 x 12)	flush mount "exclusive" distribution board	505	348	96	1 305.30
VU36NE	36 (3 x 12)	flush mount "exclusive" distribution board	630	348	96	1 585.90
VU48NE	48 (4 x 12)	flush mount "exclusive" distribution board	755	348	96	1 772.21



VE212L



VE212SN



VP72G



VP54M



VP54M

Vector series - Surface mount enclosures class II

- Compliant: IEC 61439-3
- Colour: RAL 7035 (light grey)
- Adjustable DIN rail depth (to fit products of different depth)
- Transparent hinged cover (2 - 10 way) or door (12 - 54 way)
- Rear adjustment screws for mounting on uneven/irregular wall surfaces (up to 3 mm)
- Premarked knock-outs for cable glands **M20, M25, M32, M40, M50** (size dependant)

type	number of ways	dimensions (mm)			price
		(H)	(W)	(D)	

Vector VE-L - Surface-mount distribution boards IP55

- Supplied with Earth/Neutral terminals
- IP rating: IP55
- 2 lateral knockouts for cable entry or coupling pieces
- Glow wire test to IEC 60695-2-10 and IEC 60 695-2-11: 750°C

VE103L	3 (1 x 3)	surface mounting distribution board	175	111	93	474.97
VE106L	6 (1 x 6)	surface mounting distribution board	190	165	113	548.57
VE110L	10 (1 x 10)	surface mounting distribution board	210	237	114	618.72
VE112L	12 (1 x12)	surface mounting distribution board	302	310	151	871.73
VE212L	24 (2 x 12)	surface mounting distribution board	427	310	151	1 426.05
VE118L	18 (1 x 18)	surface mounting distribution board	302	418	151	1 265.04
VE218L	36 (2 x 18)	surface mounting distribution board	452	418	151	1 959.67
VE318L	54 (3 x 18)	surface mounting distribution board	602	418	151	2 423.13

Vector VE-SN - Surface-mount boards for outdoor use IP65

UV stabilised and IP65 surface mounting enclosure range designed specifically for outdoor use and photovoltaic applications.

- Protection: IP65
- Material: Polycarbonate
- Dimensional stability up to 100°C, resistant to frost down to -25°C
- Plain base (no knockouts) for easy configuration of cable entry/exits
- Earth and neutral terminals to be ordered separately (see below)
- Glow wire test to IEC 60695-2-10 and IEC 60 695-2-11: 750°C
- Resistant to ultraviolet radiation, immersion in water in accordance with UL746C

VE112SN	12 (1 x 12)	surface mounting distribution board	302	310	151	890.13
VE212SN	24 (2 x 12)	surface mounting distribution board	427	310	151	1 415.70
VE312SN	36 (3 x 12)	surface mounting distribution board	552	318	151	2 198.87

Earth/Neutral terminal set for above VE...SN boards

VZ522	E/Neutral	terminals each with: (1x25 mm ² + 5x16 mm ² + 7x10 mm ²)				239.21
--------------	-----------	--	--	--	--	---------------

VP series - Polycarbonate enclosures IP65

- Protection: IP65
- Material: Polycarbonate
- Plain door 130° opening
- Supplied complete with chassis plate and mounting brackets
- Colour: RAL7035 (light grey)
- Insulation class II

VP20G	empty	polycarbonate surface mount enclosure	350	250	160	2 264.43
VP36G	empty	polycarbonate surface mount enclosure	500	300	160	3 010.80
VP54G	empty	polycarbonate surface mount enclosure	550	400	210	3 965.33
VP72G	empty	polycarbonate surface mount enclosure	650	400	210	4 539.20

Distribution boards (industrial) IP65 as above, including following accessories

- Fitted with DIN rail and modular covers (accepts modular devices and MCBs)
- With smoked transparent hinged door with 130° opening
- Included earth and neutral terminals

VP36M	36 (3 x 12)	polycarbonate surface mount enclosure	500	300	160	3 669.77
VP54M	54 (3 x 18)	polycarbonate surface mount enclosure	550	400	210	4 581.75
VP72M	72 (4 x 18)	polycarbonate surface mount enclosure	650	400	210	5 211.97

Accessories for polycarbonate enclosures

FL711E	blank front modular cover	for VP36M	150	300	–	255.31
FL712E	blank front modular cover	for VP54/72M	150	400	–	302.46



Vega D series - Surface and flush mounting distribution boards IP41 (with optional door fitted)

Vega D enclosures are suitable for installations in residential and commercial buildings for supplies up to 160A. Delivered in a ready-to-mount configuration. All enclosures have 24 module rows.

- Material: Metallic enclosure
- Colour: RAL 9010 (light grey)
- Integrated quick connect earth terminals
- Removable front frame for optimal access to internal installed devices
- Doors sheet metal plain or with transparent window (to be ordered separately)
- Protection class: IP30/IK07 (without door) - IP41/IK08 (with door) - class II totally insulated



type	number of modular ways		description	dimensions (mm)			price
				(H)	(W)	(D)	
Surface-mounting boards 48 way to 168 way							
• Removable top and bottom plates for easier cable entry							
FD22DN	48	(2 x 24)	surface mounting distribution board	450	550	193	5 536.28
FD32DN	72	(3 x 24)	surface mounting distribution board	600	550	193	6 167.65
FD42DN	96	(4 x 24)	surface mounting distribution board	750	550	193	7 147.48
FD52DN	120	(5 x 24)	surface mounting distribution board	900	550	193	7 601.74
FD62DN	144	(6 x 24)	surface mounting distribution board	1050	550	193	9 008.24
FD72DN	168	(7 x 24)	surface mounting distribution board	1200	550	193	9 653.41
Partially equipped surface enclosures							
FD42AN*	48	(2 x 24)	surface mounting distribution board	750	550	193	6 167.65
FD52AN*	72	(3 x 24)	surface mounting distribution board	900	550	193	7 007.17
FD62AN*	96	(4 x 24)	surface mounting distribution board	1050	550	193	7 426.94
FD72AN*	120	(5 x 24)	surface mounting distribution board	1200	550	193	7 847.85
Flush-mounting boards 48 way to 168 way							
• Metallic flush mounting tray (depth 110 mm with insulated cable entries top and bottom)							
• Removable chassis with uprights accommodating modular devices							
• Metallic (easily removable) finishing frame DN=40 / AN=72 mm depth							
FU22DN	48	(2 x 24)	flush mounting distribution board	537	550	150	6 365.45
FU32DN	72	(3 x 24)	flush mounting distribution board	687	550	150	7 776.55
FU42DN	96	(4 x 24)	flush mounting distribution board	837	550	150	8 395.27
FU52DN	120	(5 x 24)	flush mounting distribution board	987	550	150	9 082.99
FU62DN	144	(6 x 24)	flush mounting distribution board	1137	550	150	9 534.95
FU72DN	168	(7 x 24)	flush mounting distribution board	1287	550	150	10 994.35
Partially equipped flush enclosures							
FU42AN*	48	(2 x 24)	flush mounting distribution board	837	550	182	7 776.55
FU52AN*	72	(3 x 24)	flush mounting distribution board	987	550	182	8 802.38
FU62AN*	96	(4 x 24)	flush mounting distribution board	1137	550	182	9 294.60
FU72AN*	120	(5 x 24)	flush mounting distribution board	1287	550	182	9 718.96
* Supplied without top two rows. To be completed with internal modules of choice (below) to accept main switch MCCB (up to 250A) or two rows modular devices or chassis plate.							
Doors for Vega D enclosures (sheet metal)							
Plain doors (left or right hinged 135° opening)							
FD22PN	plain	sheet metal door for enclosures	FD/FU22	350	500	-	1 104.04
FD32PN	plain	sheet metal door for enclosures	FD/FU32	500	500	-	1 286.90
FD42PN	plain	sheet metal door for enclosures	FD/FU42	650	500	-	1 473.20
FD52PN	plain	sheet metal door for enclosures	FD/FU52	800	500	-	1 564.05
FD62PN	plain	sheet metal door for enclosures	FD/FU62	950	500	-	1 656.06
FD72PN	plain	sheet metal door for enclosures	FD/FU72	1100	500	-	1 840.06
Transparent doors (left or right hinged 135° opening)							
FD22TN	transparent	sheet metal door for enclosures	FD/FU22	350	500	-	1 656.06
FD32TN	transparent	sheet metal door for enclosures	FD/FU32	500	500	-	1 746.91
FD42TN	transparent	sheet metal door for enclosures	FD/FU42	650	500	-	2 024.07
FD52TN	transparent	sheet metal door for enclosures	FD/FU52	800	500	-	2 206.92
FD62TN	transparent	sheet metal door for enclosures	FD/FU62	950	500	-	2 390.93
FD72TN	transparent	sheet metal door for enclosures	FD/FU72	1100	500	-	2 666.94
Internal modules (to fill upper 2 spaces on FD/FU42,62,72AN enclosures)							
FD01A1	1 row 24 way	standard chassis with modular DIN cover		150	-	-	668.18
FD01A2	1 row adj.	DIN rail kit for terminals with plain front cover		150	-	-	898.18
FD01K1	1 row	for 1x horizontally mounted 160A MCCB		150	-	-	1 569.80

See page H-6 for Vega D internal modules and accessories



Quadro 5 series - Floor standing distribution board system (IP55)

- Nominal insulation voltage: U_i = 690 V
- Type tested nominal current: 630A, 35 kA
- Colour: RAL9010, (plinth RAL7042)
- Class of protection: IP55, IK10 (with door) to EN 60530

type	description	for enclosure	dimensions (mm)			price
			(H)	(W)	(D)	

Enclosures - Height: 1260 mm - Surface wall mount or (floor mount with optional plinth)

- Main frame with back plate, removable top and bottom plates and 4 lugs for wall mounting
- 1200 mm Internal height - accepts: - 8 rows (150 mm high) or 6 rows (200 mm high) 24 way

FM205	upright basic frame without plinth	(standard)	1260	700	260	8 954.19
FM405	pair of side plates (L and R) for enclosure	FM205	1260	-	260	1 772.21
FM450	plinth (optional) for floor mounting enclosure	FM205	150	700	260	2 985.50
FM535	plain sheet metal hinged door for	FM205	1260	685	-	3 452.41
FM545	transparent sheet metal hinged door for	FM205	1260	685	-	4 570.25

Enclosures - Height: 2010 mm (floor standing with back plate, removable top plate and plinth)

- Main frame with back plate, removable top plate and plinth with 2 wall securing lugs
- 1800 mm Internal height - accepts: - 12 rows (150 mm high) or 9 rows (200 mm high) 24 way

FM109	upright basic frame with back plate and plinth	(narrow)	2010	450	260	13 616.43
FM209	upright basic frame with back plate and plinth	(standard)	2010	700	260	14 800.97
FM409	pair of side plates (L and R) for enclosure	FM1/209	2010	-	260	2 572.64
FM519	plain sheet metal hinged door (narrow)	FM109	2010	435	-	4 383.94
FM539	plain sheet metal hinged door (standard)	FM209	2010	685	-	5 597.23
FM549	transparent sheet metal hinged door (standard)	FM209	2010	685	-	7 443.04

Equipment mounting kits - For Quadro 5 system

- Comprises: mounting rail + accessories and front covers for modular MCBs and MCCBs

For 700 mm wide (standard) panels

UC201	mounting kit for MCBs (150 mm)	24 modules	FM205/9	150	600	-	917.73
UC205	mounting kit for MCBs (200 mm)	24 modules	FM205/9	200	600	-	1 000.54
UC011H	mounting kit for MCCBs	x160	FM205/9	300	600	-	1 374.30
UC021H	mounting kit for MCCBs	x250	FM205/9	300	600	-	2 331.13
UC464P	kit for mounting 2 x MCCBs	P630	FM205/9	300	600	-	1 909.06
UC464X	kit for mounting 2 x MCCBs	x630	FM205/9	300	600	-	2 264.43
UC233EM	kit with knock-outs for 3 x 96 mm instruments		FM205/9	200	600	-	875.18

For 450 mm wide (narrow) panels

UC200	mounting kit for MCBs	10 modules	FM109	150	350	-	619.87
UC010H	mounting kit for MCCBs	x160	FM109	300	350	-	1 143.14
UC020H	mounting kit for MCCBs	x250	FM109	300	350	-	1 935.52
UC434P	kit for mounting 1 x MCCB	P630	250A	300	350	-	1 557.15
UC434X	kit for mounting 1 x MCCB	x630	250A	300	350	-	1 723.91

Accessories for Quadro 5 enclosures - (other common accessories see page H-11)

FM484	chassis plates for standard enclosures		FM205/9	300	500	-	607.22
FM486	chassis plates for standard enclosures		FM205/9	600	500	-	1 058.04
FM635	horizontal joining kit (side by side mounting of frames)						840.68
FM653	screw-in lifting ring set for Quadro 5 enclosures					(2pcs)	234.61
UC915	clip-in cable trunking support (60 mm vertical / 40 mm horizontal)						66.71
JP024	blanking strip (24 modules wide) with breakable sections						71.31
FZ517	replacement square 6 x 6 mm key lock insert						79.36

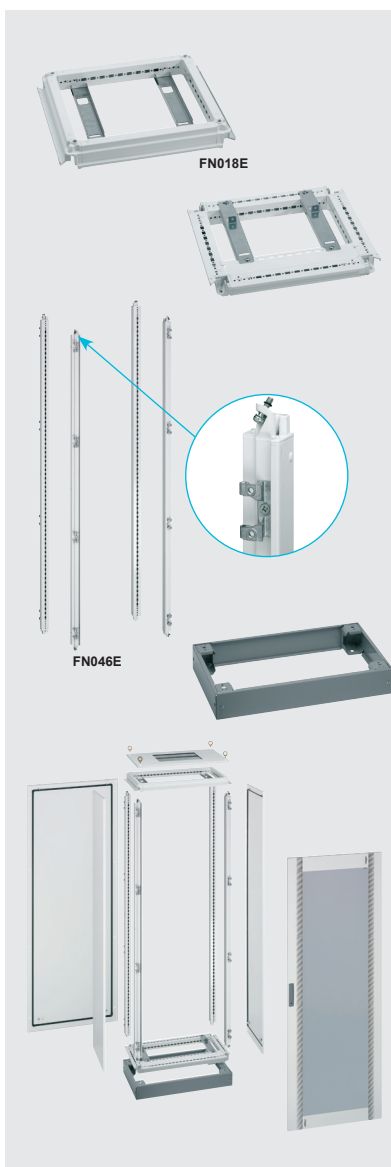
(continued...) Vega D Internal modules

type	number of modular ways	description	dimensions (mm)			price
			(H)	(W)	(D)	
FD02A1	2 rows (24 way)	standard chassis with modular DIN cover	300	-	-	1 213.29
FD02K1	2 row	for 1 x vertically mounted 250A MCCB	300	-	-	1 294.95
FD02C2	2 row	perforated chassis plate + plain front cover	300	-	-	1 864.21
FD00C2	2 row	plain flat surface front cover for enclosures	300	-	-	589.97
FD00M2	2 row	chassis plate direct fixing on vert. supports	300	-	-	282.91

Accessories for Vega D enclosures

JP002	blanking strip	24 way blanking strip (breakable sections)				(ea)	71.31
FD00A1	label holder	24 way holder and paper strip for marking				(10 per pack)	471.52
FD00F1	bracket	for horizontal side by side mounting				(ea)	555.47
FD00F2	brackets	external wall mount for surface enclosures				(ea)	466.92
FZ794	pocket plan	self adhesive flexible A4 format pocket plan				(10 per pack)	441.62
FD00S1	key lock	key lock to replace original door latch				(ea)	380.67

<ul style="list-style-type: none"> • Quick and easy to assemble • IP55 (with door) • Access from all sides • Sheet metal class I 	1		2		3	4	5
Dimension (mm)			Top and bottom frame (set)	4 uprights	plinth (H=100 mm)	back panel	side panel
width	depth	height					
450	400	1900	FN018E	FN046E	FN438E	FN216E	FN356E
450	600	1900	FN020E	FN046E	FN440E	FN216E	FN366E
450	800	1900	FN022E	FN046E	FN442E	FN216E	FN376E
700	400	1900	FN021E	FN046E	FN441E	FN276E	FN356E
700	600	1900	FN029E	FN046E	FN451E	FN276E	FN366E
700	800	1900	FN013E	FN046E	FN433E	FN276E	FN376E
900	400	1900	FN023E	FN046E	FN443E	FN296E	FN356E
900	600	1900	FN031E	FN046E	FN453E	FN296E	FN366E
900	800	1900	FN017E	FN046E	FN437E	FN296E	FN376E



Quadro+ distribution board system (IP55)

Quadro + enclosure systems are supplied in a “flat-pack” format for ease of transportation and on-site assembly. Cabinets can be joined horizontally to form complete multi-cabinet systems without limitations. Ideal for applications up to 4000A. Basic component requirement to assemble a single floor standing cabinet:

- Top and bottom frames • four uprights • plinth • side panels • back panel • top and bottom plates • door

type	description	dimensions (mm)			price
		(H)	(W)	(D)	
Top and bottom frame set (connects to uprights) 1					
FN018E	top and bottom set frame (connects to uprights)	–	450	400	5 076.26
FN020E	top and bottom set frame (connects to uprights)	–	450	600	5 759.39
FN022E	top and bottom set frame (connects to uprights)	–	450	800	6 065.29
FN021E	top and bottom set frame (connects to uprights)	–	700	400	6 243.55
FN029E	top and bottom set frame (connects to uprights)	–	700	600	6 678.26
FN013E	top and bottom set frame (connects to uprights)	–	700	800	7 340.68
FN023E	top and bottom set frame (connects to uprights)	–	900	400	6 765.67
FN031E	top and bottom set frame (connects to uprights)	–	900	600	7 370.59
FN017E	top and bottom set frame (connects to uprights)	–	900	800	7 844.40
Four uprights (connects to top and bottom frames with single captive screw) 2					
FN046E	set of 4 uprights (connects to top and bottom frame)	1900	–	–	6 647.21
Plinth (100 mm high) 3					
FN438E	plinth with removable front and rear inspection plates	100	450	400	2 221.87
FN440E	plinth with removable front and rear inspection plates	100	450	600	2 346.08
FN442E	plinth with removable front and rear inspection plates	100	450	800	2 485.23
FN441E	plinth with removable front and rear inspection plates	100	700	400	2 385.18
FN451E	plinth with removable front and rear inspection plates	100	700	600	2 461.08
FN433E	plinth with removable front and rear inspection plates	100	700	800	2 651.99
FN443E	plinth with removable front and rear inspection plates	100	900	400	2 507.08
FN453E	plinth with removable front and rear inspection plates	100	900	600	2 588.74
FN437E	plinth with removable front and rear inspection plates	100	900	800	2 775.04
Back panel (removable) 4					
FN216E	back panel for Quadro+ enclosures (removable)	1900	450	–	2 021.77
FN276E	back panel for Quadro+ enclosures (removable)	1900	700	–	2 858.99
FN296E	back panel for Quadro+ enclosures (removable)	1900	900	–	3 715.77
Side panels (removable) supplied individually 5					
FN356E	side panel for Quadro+ enclosures (removable)	1900	–	400	1 841.21
FN366E	side panel for Quadro+ enclosures (removable)	1900	–	600	2 283.98
FN376E	side panel for Quadro+ enclosures (removable)	1900	–	800	3 520.27

6		7		8		9	10
top and bottom cable entry plates		doors				chassis plate full height	functional uprights
plain plate	cable entry	plain	transparent				
FN078E	FN098E	FN546E	–			FN726E	FN696E
FN080E	FN100E	FN546E	–			FN726E	FN696E
FN082E	FN102E	FN546E	–			FN726E	FN696E
FN081E	FN101E	FN506E	FN516E			FN736E	FN696E
FN089E	FN109E	FN506E	FN516E			FN736E	FN696E
FN073E	FN093E	FN506E	FN516E			FN736E	FN696E
FN083E	FN103E	FN526E	FN536E			FN746E	FN696E
FN091E	FN111E	FN526E	FN536E			FN746E	FN696E
FN077E	FN097E	FN526E	FN536E			FN746E	FN696E



type	description	dimensions (mm)			price
		(H)	(W)	(D)	
Top and bottom cable entry plate (plain plate) 6 / (cable entry) 7					
FN078E	top (or) bottom plain plate (plain)	–	450	400	932.68
FN080E	top (or) bottom plain plate (plain)	–	450	600	1 083.34
FN082E	top (or) bottom plain plate (plain)	–	450	800	1 263.89
FN081E	top (or) bottom plain plate (plain)	–	700	400	1 127.04
FN089E	top (or) bottom plain plate (plain)	–	700	600	1 354.75
FN073E	top (or) bottom plain plate (plain)	–	700	800	1 902.16
FN083E	top (or) bottom plain plate (plain)	–	900	400	1 237.44
FN091E	top (or) bottom plain plate (plain)	–	900	600	1 554.85
FN077E	top (or) bottom plain plate (plain)	–	900	800	2 026.37
FN098E	top (or) bottom cable entry plate (knock outs)	–	450	400	1 336.35
FN100E	top (or) bottom cable entry plate (knock outs)	–	450	600	1 781.41
FN102E	top (or) bottom cable entry plate (knock outs)	–	450	800	1 886.06
FN101E	top (or) bottom cable entry plate (knock outs)	–	700	400	1 884.91
FN109E	top (or) bottom cable entry plate (knock outs)	–	700	600	1 959.67
FN093E	top (or) bottom cable entry plate (knock outs)	–	700	800	2 467.98
FN103E	top (or) bottom cable entry plate (knock outs)	–	900	400	1 892.96
FN111E	top (or) bottom cable entry plate (knock outs)	–	900	600	2 281.68
FN097E	top (or) bottom cable entry plate (knock outs)	–	900	800	2 684.19
Doors (with hinges and locks) 8					
FN510E	door for Quadro+ system (reversible) (transparent)	1900	450	–	4 322.99
FN516E	door for Quadro+ system (reversible) (transparent)	1900	700	–	6 263.10
FN536E	door for Quadro+ system (reversible) (transparent)	1900	900	–	7 227.98
FN546E	door for Quadro+ system (reversible) (plain)	1900	450	–	3 782.47
FN506E	door for Quadro+ system (reversible) (plain)	1900	700	–	4 741.60
FN526E	door for Quadro+ system (reversible) (plain)	1900	900	–	5 382.17
Chassis plates (full height) 9					
FN726E	chassis plate, galvanized steel (full height)	1900	450	–	2 135.62
FN736E	chassis plate, galvanized steel (full height)	1900	700	–	2 954.45
FN746E	chassis plate, galvanized steel (full height)	1900	900	–	3 988.33
* Partial chassis plates, see page H-11					
Functional uprights 10					
• Required for fixing mounting rails/chassis plates and front covers to support circuit breaker					
FN696E	functional uprights (to support CB mounting acc.)	1900	–	–	3 621.47
* Functional uprights partial height, see page H-10					



Equipment mounting kits (for Quadro 5 and Quadro+ systems)

• Comprises: mounting accessories and front covers for MCB's, MCCB's and ACB's

type	description		for components	dimensions (mm)		price
				(H)	(W)	
For 450 mm wide panels						
UC200	kit for mounting MCBs		10 modules	150	350	619.87
UC010H	kit for mounting 2 x MCCBs	vertical	x160	300	350	1 143.14
UC020H	kit for mounting 1 x MCCB	vertical	x250	300	350	1 935.52
UC434P	kit for mounting 1 x MCCB	vertical	P630	300	350	1 557.15
UC434X	kit for mounting 1 x MCCB	vertical	x630	300	350	1 723.91
For 700 mm wide panels						
Vertical mounting (terminals top and bottom)						
UC201	kit for mounting MCBs		24 modules	150	600	917.73
UC205	kit for mounting MCBs		24 modules	200	600	1 000.54
UC011H	kit for mounting 5 x MCCBs	vertical	x160	300	600	1 374.30
UC021H	kit for mounting 2 x MCCBs	vertical	x250	300	600	2 331.13
UC464P	kit for mounting 2 x MCCBs	vertical	P630	300	600	1 909.06
UC464X	kit for mounting 2 x MCCBs	vertical	x630	300	600	2 264.43
UC050H	kit for mounting 1 x MCCB	vertical	h1000	600	600	2 349.53
UC060H	kit for mounting 1 x MCCB	vertical	h1600	600	600	5 321.22
UC317S	kit for motorized C/overs	horizontal	125-400A	300	600	2 648.54
UC321S	kit for motorized C/overs	horizontal	125-630A	300	600	4 468.60
UC062HEM	kit for mounting ACBs	frame A	1250/1600A	600	600	5 494.88
UC233EM	kit with knock-outs for up to 3 x 96 mm ² instruments			200	600	875.18
Horizontal mounting (terminals left and right)						
UC127H	kit for mounting 1 x MCCB	horizontal	x250	200	600	1 871.11
UC463XR	kit for mounting 1 x MCCB	horizontal	x630	300	600	1 835.46
UC463PR	kit for mounting 1 x MCCB	horizontal	P630	300	600	1 668.71
UC054H	kit for mounting 1 x MCCB	horizontal	h1000	400	600	1 598.56
For 900 mm wide panels						
Vertical mounting (terminals top and bottom)						
UC203	kit for mounting MCBs		36 modules	150	800	985.59
UC207	kit for mounting MCBs		36 modules	200	800	1 067.24
UC012H	kit for mounting 8 x MCCBs	vertical	x160	300	800	1 430.65
UC022H	kit for mounting 3 x MCCBs	vertical	x250	300	800	2 956.75
UC484XD	kit for mounting 3 x MCCBs	vertical	x630	400	800	2 650.84
UC484PD	kit for mounting 3 x MCCBs	vertical	P630	400	800	2 127.57
UC051H	kit for mounting 1 x MCCB	vertical	h1000	600	800	3 010.80
UC061H	kit for mounting 1 x MCCB	vertical	h1600	600	800	5 627.13
UC082HEM	kit for mounting ACBs	frame B	1000/4000A	600	800	6 280.35
UC328S	kit for motorized C/overs	horizontal	800-1600A	600	800	5 386.77
UC243EM	kit with knock-outs for up to 3 x 96 mm ² instruments			200	800	1 125.89
Horizontal mounting (terminals left and right)						
UC128H	kit for mounting 1 x MCCB	horizontal	x250	200	800	2 035.57
UC483PR	kit for mounting 1 x MCCB	horizontal	P630	200	800	1 860.76
UC483XR	kit for mounting 1 x MCCB	horizontal	x630	200	800	2 027.52
UC055H	kit for mounting 1 x MCCB	horizontal	h1000	400	800	2 009.12
Blanking plates (for Quadro 5 and Quadro+ systems)						
UC221	front blanking cover plate		(plain)	50	350	418.62
UC222	front blanking cover plate		(plain)	150	350	310.51
UC223	front blanking cover plate		(plain)	200	350	393.32
UC224	front blanking cover plate		(plain)	300	350	447.37
UC225	front blanking cover plate		(plain)	400	350	732.58
UC226	front blanking cover plate		(plain)	600	350	700.38
UC231	front blanking cover plate		(plain)	50	600	477.27
UC239	front blanking cover plate		(plain)	100	600	515.22
UC232	front blanking cover plate		(plain)	150	600	568.12
UC233	front blanking cover plate		(plain)	200	600	782.03
UC234	front blanking cover plate		(plain)	300	600	579.62
UC235	front blanking cover plate		(plain)	400	600	813.08
UC236	front blanking cover plate		(plain)	600	600	1 026.99

Continues on the next page... ➡



... Continued... **Blanking plates** (for Quadro 5 and Quadro+ systems)

type	description	for components	dimensions (mm)			price
			(H)	(W)	(D)	
UC241	front blanking cover plate	(plain)	50	800	–	518.67
UC249	front blanking cover plate	(plain)	100	800	–	557.77
UC242	front blanking cover plate	(plain)	150	800	–	592.27
UC243	front blanking cover plate	(plain)	200	800	–	683.13
UC244	front blanking cover plate	(plain)	300	800	–	795.83
UC245	front blanking cover plate	(plain)	400	800	–	1 037.34
UC246	front blanking cover plate	(plain)	600	800	–	1 277.69

Equipment mounting kits (for Quadro 5 and Quadro+ systems)

type	description	dimensions (mm)			price
		(H)	(W)	(D)	
Internal door (sheet metal)					
FN700E	internal hinged door for Quadro+ cabinets	1900	600	–	7 456.84
FN706E	internal hinged door for Quadro+ cabinets	1900	800	–	7 995.06

Accessories for Quadro+

All accessories are designed for adapting enclosures to accommodate a range of components. Perforations in profiles, brackets, rails are in steps 25 mm apart and accommodate cage nuts M6 (UC990).

Perforated crossbars mounts (horizontally) directly onto side uprights of enclosure

FN690E	perforated mounting rail for sides of enclosure	50	–	400	294.41
FN691E	perforated mounting rail for sides of enclosure	50	–	600	380.67
FN692E	perforated mounting rail for sides of enclosure	50	–	800	416.32

Perforated mounting rails mounts (horizontally) directly onto side uprights of enclosure

FN873E	perforated mounting rail for back of enclosure	50	300	–	234.61
FN875E	perforated mounting rail for back of enclosure	50	400	–	285.21
FN877E	perforated mounting rail for back of enclosure	50	700	–	380.67
FN879E	perforated mounting rail for back of enclosure	50	900	–	504.87

Perforated brackets mounts (horizontally) directly onto crossbars FN690/1/2E

FN863E	perforated mounting rail connects onto crossbars	50	450	–	246.11
FN865E	perforated mounting rail connects onto crossbars	50	700	–	295.56
FN867E	perforated mounting rail connects onto crossbars	50	900	–	336.97

Finishing frame required when no door is fitted to enclosure

FN406E	finishing frame when no door is used on enclosures	1900	700	–	2 087.32
FN426E	finishing frame when no door is used on enclosures	1900	900	–	2 194.27

Horizontal joining kit for joining two enclosures side by side

FN950	side connection kits (4 galvanised plates)	–	–	–	376.07
FN951	seal kit 10 x 6 mm for joining two enclosures (10 met)	–	–	–	263.36

Functional uprights (partial height)

To accept mounting kits for circuit breakers / requires 4 x perforated crossbars + front cover fixing profile

FN892E	functional uprights (supports mounting accessories)	200	–	–	1 373.15
FN893E	functional uprights (supports mounting accessories)	300	–	–	1 428.35
FN894E	functional uprights (supports mounting accessories)	400	–	–	1 453.65
FN895E	functional uprights (supports mounting accessories)	600	–	–	1 499.65

Front cover fixing profile for mounting front covers without full functional uprights

FN696EP	profile for fixing front plates to enclosures	1900	–	–	2 052.82
FN696EX01	full vertical upright kit to accommodate rack system	1900	–	–	3 750.27



type	description	dimensions (mm)			price			
		(H)	(W)	(D)				
Partial chassis plate (adjustable depth) mounts onto functional uprights								
UC960	perforated partial chassis plate (depth adjustable)	300	600	–	933.83			
UC962	perforated partial chassis plate (depth adjustable)	450	600	–	1 072.99			
UC964	perforated partial chassis plate (depth adjustable)	600	600	–	1 260.44			
Vertical dividing upright to create cable compartment in 900 wide enclosures								
FN286E	vertical dividing upright with fixing accessories	1900	–	–	2 617.49			
Cable compartment cover to cover compartment section front/back								
FN266E	cover plate for cable compartment	1900	200	–	1 811.31			
Cover plates (covers top joint when joining two enclosures)								
FN942E	plate to cover joint bet. two side by side enclosures	–	–	400	258.76			
FN943E	plate to cover joint bet. two side by side enclosures	–	–	600	278.31			
FN944E	plate to cover joint bet. two side by side enclosures	–	–	800	317.41			
Accessories for Quadro+								
UC268	hinge kit for modular covers (hinge from left or right)	–	–	–	140.31			
UC990	clip-in M6 cage nuts for perforations in profiles	–	–	–	28.76			
UC991	M6 x 12 mm screws for above cage nuts	–	–	–	21.39			
UC915*	clip-in cable trunking support (Vert. 60 mm Hor. 40 mm)	–	80	–	66.71			
UZ25V1	rail mount cable clamp / guide	–	–	–	143.76			
JP024	blanking strip (24-way) with breakable sections	–	–	–	71.31			
JE003	spare transparent self-adhesive marking strips (24-way)	–	–	–	55.21			
FZ516	replacement square 6 x 6 mm key-lock insert	–	–	–	83.96			
FN952	door latch unit (in open position)	–	–	–	741.78			
FZ767	lifting rings for enclosures	Quadro+ (2pcs)	–	–	228.86			
FZ760E	lifting rings for double enclosures	Quadro+ (2pcs)	–	–	371.47			
* For slotted trunking, see page L-11								
Busbar supports for Quadro system								
All accessories are designed for adapting enclosures to accommodate a range of components. Perforations in profiles, brackets, rails are in steps 25 mm apart and accommodate cage nuts M6 (UC900).								
type	current	bar size			description	dimensions		price
		width (mm)	thick (mm)	pole		length (mm)	width (mm)	
Side busbar support								
UC830	250A	20	5	4	side mounting busbar supports kit (2)	–	–	205.86
UC834	–	–	–	–	protective screen for above supports	1000	–	368.02
Multi stage busbars support								
UC815	400A	32	5	4	stepped busbar support (1)	–	–	1 256.99
UC288	–	–	–	–	universal crossbars for mounting UC815	–	185	365.72
UC289	–	–	–	–	universal crossbars for mounting UC816	–	500	420.92
UC988	–	–	–	–	universal crossbars for mounting UC815	–	250	278.31
UC816	–	–	–	–	protective screen for above supports	620	170	2 512.83
Flat busbar support								
UC820	630A	20/30	5/10	4	busbar support for flat bars (1)	–	–	700.38
UC812	–	–	–	–	support kit for rear vertical mounting	–	250	440.47
UC289	–	–	–	–	universal crossbars for mounting	–	500	420.92
UC827	–	–	–	–	protective screen for above support	620	–	1 343.25
Inclined busbar supports								
UC826	630A	20/30	5/10	4	busbar support for inclined bars	–	–	2 099.97
UC828	250A	–	–	–	protective screen for above support	990	212	1 006.29
Universal busbar support (adjustable)								
UC895E	3200A	30 - 120	5	4	support kit for 5 mm bars (up to 4 bars per phase)	–	–	1 099.44
UC896E	3200A	30 - 120	10	4	support kit for 10 mm bars (up to 2 x busbars per phase)	–	–	1 099.44
UC897E	3200A	30 - 120	10	4	support kit for 10 mm bars (up to 3 x busbars per phase)	–	–	1 492.75
UC860E	–	–	–	–	perforated aluminium profile for support kit	2 met.	–	3 297.16
UC861E	–	–	–	–	bracket kits for above UC860E	–	–	2 120.67



type	description		price
------	-------------	--	-------

Rail mountable earth/neutral terminals (clips vertically onto rail)

KM13N	rail mountable neutral terminal (blue)	6 x 16 + 7 x 10 mm ²	73.61
KM13E	rail mountable earth terminal (green)	6 x 16 + 7 x 10 mm ²	73.61

Terminal support (clips into various distribution boards)

KN00A	universal terminal support	Din rail mount (horizontal or vertical) 105 mm	48.31
--------------	----------------------------	--	--------------

Distribution terminals (fully insulated clips onto above support)

Incoming	1.5..25 mm ² screw clamp terminal
Outgoing	1.5..4 mm ² connect cage clamp terminals (push-in)

type	supply	output	description	colour	price
	1.5..25 mm ²	1.5..4 mm ²			
KN10E	63A 2 x 25 mm ²	8 x 4 mm ²	insulated earth terminal	(green)	108.11
KN18E	63A 4 x 25 mm ²	14 x 4 mm ²	insulated earth terminal	(green)	132.26
KN26E	63A 6 x 25 mm ²	20 x 4 mm ²	insulated earth terminal	(green)	159.86
KN99E	earth insulated bridge piece for above terminals (push-in)				233.46
KN10N	63A 2 x 25 mm ²	8 x 4 mm ²	insulated neutral terminal	(blue)	108.11
KN18N	63A 4 x 25 mm ²	14 x 4 mm ²	insulated neutral terminal	(blue)	132.26
KN26N	63A 6 x 25 mm ²	20 x 4 mm ²	insulated neutral terminal	(blue)	159.86
KN99N	neutral insulated bridge piece for above terminals (10pcs)				233.46
KN10P	63A 2 x 25 mm ²	8 x 4 mm ²	insulated phase terminal	(brown)	108.11
KN18P	63A 4 x 25 mm ²	14 x 4 mm ²	insulated phase terminal	(brown)	132.26
KN26P	63A 6 x 25 mm ²	20 x 4 mm ²	insulated phase terminal	(brown)	159.86
KN99P	phase insulated bridge piece for above terminals (10 pcs)				233.46
KN04N	90A 4 x 25 mm ²	screw clamp	insulated neutral terminal	(blue)	66.71
KN07N	90A 7 x 25 mm ²	screw clamp	insulated neutral terminal	(blue)	70.16
KN04P	90A 4 x 25 mm ²	screw clamp	insulated phase terminal	(brown)	66.71
KN07P	90A 7 x 25 mm ²	screw clamp	insulated phase terminal	(brown)	70.16

Single-pole distribution blocks (fully protected) Icc: 36kA

- Space saving
- IP20 protection
- DIN rail or bolt down mounting
- One main cable input - various cable outputs

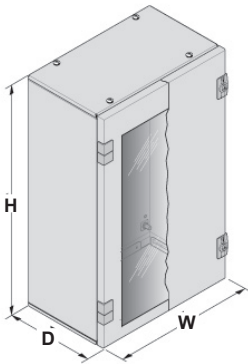
type	amps	incoming terminals	outgoing terminals (per phase) mm ²				lcc kA	poles	price
			1.5...6	2.5...10	2.5...16	2.5...25			
KJ02D	125A	1x35/1x16 mm ²			6		36	1 pole	589.97
KJ02C	160A	70 mm ²			6		36	1 pole	946.48
KJ02A	250A	95 mm ²		4	5	2	36	1 pole	1 220.19
KJ02B	400A	150 mm ²		4	5	2	36	1 pole	1 322.55

Multi-pole distribution blocks

- Modular DIN rail mounting (mounts through modular front cut-out)
- 3Ph+N distribution bars in modular format
- High fault level
- IEC 60947-1

type	amps	incoming terminals	outgoing terminals (per phase) mm ²				lcc kA	poles	price
			1.5...6	2.5...10	2.5...16	2.5...25			
KJ01A	100A	35 mm ²			10	1	29	2 pole	853.33
KJ01B	80A	16 mm ²		8			21	4 pole	853.33
KJ01C	125A	35 mm ²			10	1	29	4 pole	966.04
KJ01D	160A	50 mm ²			8		20	4 pole	2 945.25
KJ02E	125A	25 mm ²	5/4*	2/6*			20	4 pole	915.43

*= Neutral terminals



Orion + Enclosures (IP65) (sheet metal and polyester)

Sheet steel or glass reinforced polyester - the **Orion Plus** enclosures are suited for the harshest conditions and can be applied for wet and mechanical use. Even under chemical use, Orion Plus offers the ideal solution with glass reinforced polyester. Flexibly is provided via mounting plate or DIN rail (*in 2 different versions*) and thus offers the suitable interior equipment system - both for the application in automation and for classical current distribution.

- Colour: RAL 7035 (light grey)
- Mounting: Surface mounting
- Certification: CEI EN 60439-1
- Material: Sheet steel - class I or polyester - class II
- IP Rating: (IP65//K10) protection, insulation class I (powder-coated epoxy polyester)

General features:

- Size and depth adapted according to your need
- Front door with foamed gasket opening 140°, hinged left or right
- Interior kits for conversion to distribution facility (*for mounting MCBs and modular products*)
- Polyester enclosures for indoor and outdoor applications
- Sheet metal enclosures for indoor application

Typical applications:

- Installation of automation products for the control of machines or small processes
- Installation of non modular products such as contactors, transformers, etc
- Cable termination and distribution



FL117A



FL110A+FL547A



FL404A

type	protection	description	dimensions (mm)			price
			(H)	(W)	(D)	

Sheet metal enclosures (surface mounting) colour: RAL 7035 (light grey)

- IP65 protection, insulation class I (powder-coated epoxy polyester)
- Full-sized top and bottom gland plates (*enclosures can be mounted on top of each other*)

FL102A	IP65	surface mount sheet metal enclosure	300	250	160	2 034.42
FL104A	IP65	surface mount sheet metal enclosure	350	300	160	2 298.93
FL110A	IP65	surface mount sheet metal enclosure	500	300	200	2 741.69
FL112A	IP65	surface mount sheet metal enclosure	500	400	200	3 094.75
FL117A	IP65	surface mount sheet metal enclosure	650	400	200	3 447.81
FL120A	IP65	surface mount sheet metal enclosure	650	500	250	4 067.68
FL124A	IP65	surface mount sheet metal enclosure	800	600	300	4 773.80
FL128AEM	IP65	surface mount sheet metal enclosure	950	800	300	8 731.00
FL130AEM	IP65	surface mount sheet metal enclosure	1250	800	300	8 792.03

Note: Above enclosures with transparent door (add suffix T to part no. - e.g **FL102AT**) +15%

Polyester enclosures (surface mounting) colour: RAL 7035 (light grey)

- IP66 protection, insulation class II
- Waterproof hood, top and bottom (*incorporated*)

FL204B	IP66	surface mount polyester enclosure	350	300	160	3 006.20
FL209B	IP66	surface mount polyester enclosure	500	300	200	3 447.81
FL213B	IP66	surface mount polyester enclosure	500	400	200	3 802.02
FL216B	IP66	surface mount polyester enclosure	650	400	200	4 773.80
FL221B	IP66	surface mount polyester enclosure	650	500	250	5 835.29
FL221BT	IP66	as above + transparent door	650	500	250	4 904.91
FL229B	IP66	surface mount polyester enclosure	800	600	300	7 601.74

Note: Above enclosures (excl. FL221BT with transparent door) add suffix T to part no. - e.g **FL204BT** +15%

Chassis plates (supplied separately)

- Plain mounting plate mounted either directly
- Sheet metal thickness 2 mm
- Mounting either directly on the back of enclosure or on the integrated slides with brackets **FL450A** to adjust depth, see page **H-14**

type	description	for enclosures	price
FL402A	internal sheet metal chassis plate	for enclosure FL102	310.51
FL404A	internal sheet metal chassis plate	for enclosure FL104/204	319.72
FL407A	internal sheet metal chassis plate	for enclosure FL110/209	486.47
FL408A	internal sheet metal chassis plate	for enclosure FL112/213	530.17
FL412A	internal sheet metal chassis plate	for enclosure FL117/216	672.78
FL413A	internal sheet metal chassis plate	for enclosure FL120/221/221B	796.98
FL415A	internal sheet metal chassis plate	for enclosure FL124/229	1 150.04
FL417AEM	internal sheet metal chassis plate	for enclosure FL128	1 886.06
FL419AEM	internal sheet metal chassis plate	for enclosure FL130	2 382.88



FL544A



FL981A



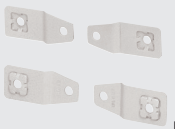
FL713E



FL96Z



FL958A



FL85Z



FL670A

Orion + Enclosures (IP65) (sheet metal and polyester)

type	description		for enclosures	price
Internal door assembly				
<ul style="list-style-type: none"> Internal doors, sheet metal reversible Delivered with fixing accessories mounting on slides with delivered fixing frame 				
FL544A	internal door mounting kit	for enclosure	FL104/204	1 945.87
FL547A	internal door mounting kit	for enclosure	FL110/209	2 121.82
FL548A	internal door mounting kit	for enclosure	FL112/213	2 124.12
FL551A	internal door mounting kit	for enclosure	FL117/216	2 386.33
FL552A	internal door mounting kit	for enclosure	FL120/221	2 476.03
FL555A	internal door mounting kit	for enclosure	FL124/229	3 094.75
FL557A	internal door mounting kit	for enclosure	FL128	3 624.92
FL559A	internal door mounting kit	for enclosure	FL130	4 067.68

Functional chassis (complete) for mounting modular products and MCBs

- To convert a surface mount enclosure into a distribution board
- Pre-assembled made up of: 2 Uprights, DIN guides and modular panels

type	number of modular ways	description		for enclosures	price
FL979A	24 (2x12)	complete modular chassis system		FL104A	1 106.34
FL980A	24 (2x12)	complete modular chassis system		FL204B	1 062.64
FL981A	36 (3x12)	complete modular chassis system		FL110/209	1 190.29
FL982A	54 (3x18)	complete modular chassis system		FL112/213	1 590.50
FL983A	72 (4x18)	complete modular chassis system		FL117/216	2 310.43
FL994A	88 (4x22)	complete modular chassis system		FL120A/221B	2 671.54
FL996A	140 (5x28)	complete modular chassis system		FL124A/229B	3 547.87
FL998A	216 (6x36)	complete modular chassis system		FL128A	4 622.00
FL000A	288 (8x36)	complete modular chassis system		FL130A	5 552.38

Kits for main incomer for enclosures

FL372A	(H) 300 mm	kit to mount 125/160A MCCBs	into	FL120/221	1 072.99
FL373A	(H) 300 mm	kit to mount 125/160A MCCBs	into	FL124/229	1 242.04
FL374A	(H) 300 mm	kit to mount 125/160A MCCBs	into	FL128/130	1 450.20

Above requires **HYA033H** DIN rail adaptor to mount onto rail in kit, see page **B-20**

Blank front covers

- Fixed by screws of 1/4 turn to replace modular covers

FL711E	150 mm	blank front cover for enclosures	FL104/10FL204/9	255.31
FL712E	150 mm	blank front cover for enclosures	FL112/17/FL213/16	302.46
FL713E	150 mm	blank front cover for enclosures	FL120A/221B	323.17
FL714E	150 mm	blank front cover for enclosures	FL124A/229B	399.07
FL715E	150 mm	blank front cover for enclosures	FL128/130A	504.87
FL733E	300 mm	blank front cover for enclosures	FL120A/221B	1 150.04
FL734E	300 mm	blank front cover for enclosures	FL124A/229B	1 238.59
FL735E	300 mm	blank front cover for enclosures	FL128/130A	1 326.00

Plinths for enclosures

FL958A	base mount plinth system	for enclosures	FL120/221	2 651.99
FL960A	base mount plinth system	for enclosures	FL124/229	3 006.20
FL962A	base mount plinth system	for enclosures	FL128/130	3 447.81

Accessories for enclosures

FL670A	seal kit for mounting enclosures one above another			310.51
FL85Z	metallic mounting brackets for sheet metal enclosures			135.71
FL863Z	plastic mounting brackets for polyester enclosures			259.91
FL871Z	blanking strip (grey) 6 x 4 way blanks in a pack			67.86
FL96ZX01	lever handle door lock (without key) for all enclosures			179.41
FL96Z	lever handle door lock (with key) for all enclosures			179.41
FL93Z	set of 2 locks triangular centre 8 mm			126.51
FL450A	4 brackets delivered with fixing screws			198.96



HE204

HE series - Sheet metal electrical enclosures

- Manufactured from high-grade mild steel, powder-coated
- Supplied with internal Aluzinc chassis plate (2 mm thick)
- Supplied with 6 mm square drive locks, key lock and mounting brackets
- Degree of protection: IP65 (continuous foam gasket)

type	IP rating	colour	description	dimensions (mm)			price
				(H)	(W)	(D)	

Sheet metal enclosures

IP65

Orange enclosures - (RAL2000) electric orange

HE200	IP65	orange	wall mount sheet metal enclosure	250	200	170	1 331.75
HE201	IP65	orange	wall mount sheet metal enclosure	350	250	170	1 638.81
HE202	IP65	orange	wall mount sheet metal enclosure	450	300	220	2 010.27
HE203	IP65	orange	wall mount sheet metal enclosure	550	400	220	2 466.83
HE203GP1*	IP65	orange	as above with bottom gland plate	550	400	220	3 059.10
HE204	IP65	orange	wall mount sheet metal enclosure	650	450	270	3 202.86
HE205	IP65	orange	wall mount sheet metal enclosure	750	550	270	3 943.48
HE206	IP65	orange	wall mount sheet metal enclosure	850	600	270	4 772.65
HE206E	IP65	orange	wall mount sheet metal enclosure	850	600	330	5 169.42
HE206EGP1*	IP65	orange	as above with bottom gland plate	850	600	330	5 454.63
HE207	IP65	orange	wall mount sheet metal enclosure	950	700	270	5 719.13
HE207E	IP65	orange	wall mount sheet metal enclosure	950	700	330	6 233.20
HE207EGP1*	IP65	orange	as above with bottom gland plate	950	700	330	8 171.01
HE208	IP65	orange	wall mount sheet metal enclosure	1150	850	270	7 731.70
HE208E	IP65	orange	wall mount sheet metal enclosure	1150	850	330	8 461.97

* GP1-(bottom gland plate)

Enclosures with transparent glass door

HE201T	IP65	orange	enclosure with transparent door	350	250	170	2 208.07
HE202T	IP65	orange	enclosure with transparent door	450	300	220	2 671.54
HE203T	IP65	orange	enclosure with transparent door	550	400	220	3 093.60
HE204T	IP65	orange	enclosure with transparent door	650	450	270	4 178.09
HE205T	IP65	orange	enclosure with transparent door	750	550	270	5 439.68
HE206T	IP65	orange	enclosure with transparent door	850	600	270	6 161.90
HE206ET	IP65	orange	enclosure with transparent door	850	600	330	6 558.66
HE207T	IP65	orange	enclosure with transparent door	950	700	270	7 495.94
HE207ET	IP65	orange	enclosure with transparent door	950	700	330	8 013.46
HE208T	IP65	orange	enclosure with transparent door	1150	850	270	9 907.57
HE208ET	IP65	orange	enclosure with transparent door	1150	850	330	10 637.84

Grey enclosures - (RAL7032) light grey

IP65

HE200-G	IP65	grey	wall mount sheet metal enclosure	250	200	170	1 331.75
HE201-G	IP65	grey	wall mount sheet metal enclosure	350	250	170	1 638.81
HE202-G	IP65	grey	wall mount sheet metal enclosure	450	300	220	2 010.27
HE203-G	IP65	grey	wall mount sheet metal enclosure	550	400	220	2 466.83
HE204-G	IP65	grey	wall mount sheet metal enclosure	650	450	270	3 202.86
HE205-G	IP65	grey	wall mount sheet metal enclosure	750	550	270	4 065.38
HE206-G	IP65	grey	wall mount sheet metal enclosure	850	600	270	4 772.65
HE206E-G	IP65	grey	wall mount sheet metal enclosure	850	600	330	5 169.42
HE207-G	IP65	grey	wall mount sheet metal enclosure	950	700	270	5 719.13
HE207E-G	IP65	grey	wall mount sheet metal enclosure	950	700	330	6 233.20
HE208-G	IP65	grey	wall mount sheet metal enclosure	1150	850	270	7 731.70
HE208E-G	IP65	grey	wall mount sheet metal enclosure	1150	850	330	8 461.97

Enclosures with transparent glass door

HE201T-G	IP65	grey	enclosure with transparent door	350	250	170	2 208.07
HE202T-G	IP65	grey	enclosure with transparent door	450	300	220	2 671.54
HE203T-G	IP65	grey	enclosure with transparent door	550	400	220	3 093.60
HE204T-G	IP65	grey	enclosure with transparent door	650	450	270	4 178.09
HE205T-G	IP65	grey	enclosure with transparent door	750	550	270	5 439.68
HE206T-G	IP65	grey	enclosure with transparent door	850	600	270	6 161.90
HE206ET-G	IP65	grey	enclosure with transparent door	850	600	330	6 558.66
HE207T-G	IP65	grey	enclosure with transparent door	950	700	270	7 495.94
HE207ET-G	IP65	grey	enclosure with transparent door	950	700	330	8 013.46
HE208T-G	IP65	grey	enclosure with transparent door	1150	850	270	9 907.57
HE208ET-G	IP65	grey	enclosure with transparent door	1150	850	330	10 637.84



HE204T-G



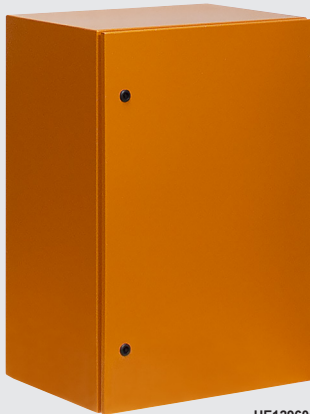
HE204T + ID04 + HC04



HC0...



16.4.431.01



HE12960GP2



GAZS1E

type	IP rating	colour	description	dimensions (mm)			price
				(H)	(W)	(D)	
Internal door kit for HE enclosures							
• Reversible and lockable							
ID02	-	white	internal door kit for enclosures	HE202	-	-	805.03
ID03	-	white	internal door kit for enclosures	HE203	-	-	1 063.79
ID04	-	white	internal door kit for enclosures	HE204	-	-	1 395.00
ID05	-	white	internal door kit for enclosures	HE205	-	-	1 690.56
ID06	-	white	internal door kit for enclosures	HE206	-	-	2 050.52
ID06E	-	white	internal door kit for enclosures	HE206E	-	-	2 131.02
ID07	-	white	internal door kit for enclosures	HE207	-	-	2 547.33
ID07E	-	white	internal door kit for enclosures	HE207E	-	-	2 688.79
ID08	-	white	internal door kit for enclosures	HE208	-	-	3 122.35
ID08E	-	white	internal door kit for enclosures	HE208E	-	-	3 306.36
Canopy for HE enclosures							
Orange - RAL2000 (electric orange)							
HC02	IP65	orange	steel canopy for enclosures	HE202	-	300 220	396.77
HC03	IP65	orange	steel canopy for enclosures	HE203	-	400 220	448.52
HC04	IP65	orange	steel canopy for enclosures	HE204	-	450 270	563.52
HC05	IP65	orange	steel canopy for enclosures	HE205	-	550 270	724.53
HC06	IP65	orange	steel canopy for enclosures	HE206	-	600 270	745.23
HC06E	IP65	orange	steel canopy for enclosures	HE206E	-	600 330	833.78
HC07	IP65	orange	steel canopy for enclosures	HE207	-	700 270	879.78
HC07E	IP65	orange	steel canopy for enclosures	HE207E	-	700 330	994.79
HC08	IP65	orange	steel canopy for enclosures	HE208	-	850 270	1 035.04
HC08E	IP65	orange	steel canopy for enclosures	HE208E	-	850 330	1 230.54
Grey - RAL7032 (light grey)							
HC02-G	IP65	grey	steel canopy for enclosures	HE202	-	300 220	396.77
HC03-G	IP65	grey	steel canopy for enclosures	HE203	-	400 220	448.52
HC04-G	IP65	grey	steel canopy for enclosures	HE204	-	450 270	563.52
HC05-G	IP65	grey	steel canopy for enclosures	HE205	-	550 270	724.53
HC06-G	IP65	grey	steel canopy for enclosures	HE206	-	600 270	745.23
HC06E-G	IP65	grey	steel canopy for enclosures	HE206E	-	600 330	833.78
HC07-G	IP65	grey	steel canopy for enclosures	HE207	-	700 270	879.78
HC07E-G	IP65	grey	steel canopy for enclosures	HE207E	-	700 330	994.79
HC08-G	IP65	grey	steel canopy for enclosures	HE208	-	850 270	1 035.04
HC08E-G	IP65	grey	steel canopy for enclosures	HE208E	-	850 330	1 230.54
Accessories							
16.4.431.01	16 mm	black	padlockable lever handle	for above enclosures			166.76
Special "extra deep" enclosures				IP65			
• Ideal for changeover switch applications							
• Supplied with internal Aluzinc chassis plate (2 mm thick)							
• Degree of protection: IP65 (continuous foam gasket)							
• Colour : RAL2000 (electric orange) - other colours on request							
HE09645	IP65	orange	extra deep sheet metal enclosures	900	600	450	11 187.56
HE12960GP1*	IP65	orange	as above with top/bottom gland plate	1200	900	600	21 091.67
* GP1-(bottom gland plate)							
Special "termination" enclosures				IP65			
• Front cover secured by 4 x screws							
Sheet metal enclosures							
GAZM1E	IP65	grey	sheet metal enclosures	200	150	120	1 357.05
Stainless steel (AISI 304) enclosures							
GAZS1E	IP65	S/Steel	stainless steel enclosures	200	150	120	2 717.54
<i>Note: For stainless steel enclosures see overleaf</i>							



SE....



RGS....



RGS....

3CR12 series - Stainless steel enclosures

- Manufactured from 3CR12 stainless steel and powder-coated
- Supplied with internal Aluzinc chassis plate (2 mm thick)
- Supplied with 6 mm square drive locks, key lock and mounting brackets
- Degree of protection: IP65 (continuous foam gasket)
- Colour: RAL2000 (electric orange) - other colours on request

type	IP rating	colour	description	dimensions (mm)			price
				(H)	(W)	(D)	
3CR12 stainless steel enclosures				IP65			
SE1030	IP65	orange	3CR12 stainless steel enclosure	350	250	170	2 303.53
SE1040	IP65	orange	3CR12 stainless steel enclosure	400	300	220	2 775.04
SE1050	IP65	orange	3CR12 stainless steel enclosure	500	400	220	3 375.36
SE1065	IP65	orange	3CR12 stainless steel enclosure	600	500	220	4 402.34
SE1070	IP65	orange	3CR12 stainless steel enclosure	700	600	270	5 954.89
SE1080	IP65	orange	3CR12 stainless steel enclosure	800	600	270	7 319.98
SE1090	IP65	orange	3CR12 stainless steel enclosure	900	700	330	8 820.78
SE1100	IP65	orange	3CR12 stainless steel enclosure	1000	800	330	10 428.53
SE1201	IP65	orange	3CR12 stainless steel enclosure	1200	800	330	12 374.39

Stainless steel enclosures with transparent glass door

SE1040T	IP65	orange	3CR12 enc. with transparent door	400	300	220	3 582.37
SE1050T	IP65	orange	3CR12 enc. with transparent door	500	400	220	4 390.84
SE1065T	IP65	orange	3CR12 enc. with transparent door	600	500	220	5 778.94
SE1070T	IP65	orange	3CR12 enc. with transparent door	700	600	270	7 601.74
SE1080T	IP65	orange	3CR12 enc. with transparent door	800	600	270	9 502.75
SE1090T	IP65	orange	3CR12 enc. with transparent door	900	700	330	11 017.35
SE1100T	IP65	orange	3CR12 enc. with transparent door	1000	800	330	13 731.43
SE1201T	IP65	orange	3CR12 enc. with transparent door	1200	800	330	15 893.50

Canopy for above enclosures

HC3CR-4	IP65	orange	canopy for stainless steel enclosures			SE1040	885.53
HC3CR-5	IP65	orange	canopy for stainless steel enclosures			SE1050	931.53
HC3CR-6	IP65	orange	canopy for stainless steel enclosures			SE1065	1 038.49
HC3CR-7	IP65	orange	canopy for stainless steel enclosures			SE1070/1080	1 268.49
HC3CR-9	IP65	orange	canopy for stainless steel enclosures			SE1090	1 464.00
HC3CR-10	IP65	orange	canopy for stainless steel enclosures			SE1100/1200	1 671.01

Add "-G" to the end of the above SE.. / HC3CR.. part numbers for grey (RAL 7035) enclosures.

304 stainless steel enclosures

IP65

- Manufactured from high grade SS 304 stainless steel
- Supplied with internal Aluzinc chassis plate (2 mm thick)
- Supplied with bottom SS 304 gland plate and enclosure mounting brackets
- Degree of protection: IP65 (continuous foam gasket)
- Colour: Stainless Steel - "brushed" finish

RGS304-30	IP65	S/Steel	SS 304 stainless steel enclosure	350	250	170	3 703.12
RGS304-40	IP65	S/Steel	SS 304 stainless steel enclosure	400	300	220	4 638.10
RGS304-50	IP65	S/Steel	SS 304 stainless steel enclosure	500	400	220	6 305.65
RGS304-65	IP65	S/Steel	SS 304 stainless steel enclosure	600	500	220	9 367.05
RGS304-70	IP65	S/Steel	SS 304 stainless steel enclosure	700	600	270	12 788.41
RGS304-80	IP65	S/Steel	SS 304 stainless steel enclosure	800	600	270	14 409.96
RGS304-93	IP65	S/Steel	SS 304 stainless steel enclosure	900	700	330	18 446.58
RGS304-103	IP65	S/Steel	SS 304 stainless steel enclosure	1000	800	330	22 586.71
RGS304-123	IP65	S/Steel	SS 304 stainless steel enclosure	1200	800	330	26 542.84

Internal door kit for all above enclosures (mild steel)

ID3CR-4	-	white	internal door kit for above enclosures	400	300	170	854.48
ID3CR-5	-	white	internal door kit for above enclosures	500	400	220	1 115.54
ID3CR-6	-	white	internal door kit for above enclosures	600	500	220	1 538.75
ID3CR-7	-	white	internal door kit for above enclosures	700	600	270	1 926.32
ID3CR-8	-	white	internal door kit for above enclosures	800	600	270	2 202.32
ID3CR-9	-	white	internal door kit for above enclosures	900	700	330	2 763.54
ID3CR-10	-	white	internal door kit for above enclosures	1000	800	330	3 240.81
ID3CR-12	-	white	internal door kit for above enclosures	1200	800	330	3 484.61



7T8100002303



7T5102304360



7F2082302055



7F0200002000



7H5102300025



7H5182300400

7T series - Snap action thermostatic bimetal sensor (used to control temperatures within enclosures)

Bimetal thermostats to control temperatures inside enclosures. Suitable for different applications, with close-on-rise (NO) or open-on rise (NC) contact for regulation of heating and ventilation equipment or to activate signalling devices.

- Small, compact size, 17.5 mm wide
- Enclosure PA66 self-extinguishing to UL 94V-0
- DIN rail (EN 60715) mountable
- IP20 protected screw terminals
- Applied standards EN 60730-1, UL approved UL873 and C22.2

type	temperature range	elec. contact	description	dimensions (mm)			price
				(H)	(W)	(D)	

7T series - Modular rail mount panel thermostats (same dimensions as 1 pole MCB)

7T8100002303	0...+60°C	1 x NO	rail mnt panel thermostat (blue dial)	86	17.5	48	415.17
7T8100002401	-20...+40°C	1 x NC	rail mnt panel thermostat (red dial)	86	17.5	48	415.17

7T series electronic hygrostat humidity control

Hygrostats automatically regulate humidity inside enclosures, triggering a heater or fan when a preset relative humidity is exceeded, prevents condensation on internal electric and electronic components

- Electronic multi-functional control of temperature and humidity (4 functions)
- LED status indication (contact ON)
- Humidity range: 10...90%

7T5102304360	+10...+60°C	1 x NO	DIN rail mount panel hygrostat	110...240 VAC/DC			972.94
---------------------	-------------	--------	--------------------------------	------------------	--	--	---------------

7F series - Filter Fans (IP54) (EN 60529)

New filter fan range from Finder ensures performance of internal components and instrumentation. Dedicated to maintaining a constant temperature in control panels and enclosures.

- Complete fan - with mounting frame, removable filter and metal finger guard
- Very low acoustic noise - minimal depth within enclosure
- Time-saving installation and maintenance - easily replaceable filter mat

type	voltage (V)	rated power	air flow m³/h		noise dB (A)	dimensions (mm²)			price
			free	with filter		size	frame	cutout	

Complete filter fan

7F2082301020	230 VAC	17 W	24	14	27	1	120	92	1 840.06
7F2082302055	230 VAC	28 W	55	40	42	2	155	125	1 869.96
7F2082303100	230 VAC	28 W	100	75	42	3	209	177	2 752.04

Exhaust filter without fan - used as outlet or inlet

The exhaust filter should match the size of the filter fan to achieve optimal ventilation within the cabinet

7F0200001000	outlet/inlet	-	-	-	exhaust filter only	1	120	92	244.96
7F0200002000	outlet/inlet	-	-	-	exhaust filter only	2	155	125	288.66
7F0200003000	outlet/inlet	-	-	-	exhaust filter only	3	209	177	668.18

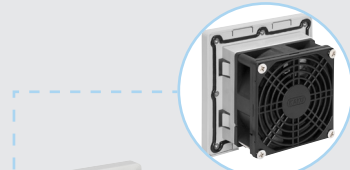
7H series - Panel heaters (anti-condensation)

For the thermal regulation of electrical cabinets. The heaters consist of a self-extinguishing PTC element in a touch safe, DIN rail mountable housing.

- Compact dimensions - DIN rail mounting - touch safe - self-regulating PTC resistance
- Screw terminal connection (250/400W heaters supplied with fast wiring screwless terminals)
- Complies with standards: IEC/EN 60335-1 and IEC 60004-1

type	voltage (V)	heating power	current (mA)	description	dimensions (mm)			price
					(H)	(W)	(D)	

7H5102300025	110...230V	25 W	130	rail mounting panel heater	102	61	64	1 316.80
7H5102300050	110...230V	50 W	200	rail mounting panel heater	117	61	64	1 817.06
7H5102300100	110...230V	100 W	450	rail mounting panel heater	167	61	64	2 502.48
7H5102300150	110...230V	150 W	700	rail mounting panel heater	242	61	64	3 108.55
7H5182300250	230 VAC	250W	1000	rail mounting panel heater	197	61	81	3 582.37
7H5182300400	230 VAC	400W	1700	rail mounting panel heater	272	61	81	3 910.13



FU98 series - Complete filter/fan units

Complete filter fan assembly with fan, mounting frame, removable filter and internal finger guard. Mounts through panel wall or door for simple installation as a ventilator device for electrical cabinets and panels.

- Temperature: -10°C...+85°C
- Permanent sealing gasket in polyurethane foam
- Shielded self lubricating ball bearing fans

type	fan type	voltage (V)	power (W)	air flow (m³/h)	noise (dB/A)	dimensions (mm²)			price
						size	frame	cutout	

FU98A series - Panel fan/filter units IP44

• Material: ABS self-extinguishing - UL94V-0, RoHS

AC filter/fans

FU-9803C1 P2A11	KA1238	110 VAC	21	106	49	3	149	122	710.73
FU-9804C1 P2A11	KA1725	110 VAC	38	255	57	4	204	175	1 253.54
FU-9805C1 P2A11	KA2208	110 VAC	60	634	67	5	255	223	3 054.50
FU-9801C1 P2A23	KA8025	230 VAC	20	21	30	1	109	83	645.18
FU-9802C1 P2A23	KA9225	230 VAC	20	35	35	2	121	95	656.68
FU-9803C1 P2A23	KA1238	230 VAC	21	99	49	3	149	122	782.03
FU-9804C1 P2A23	KA1725	230 VAC	30	213	56	4	204	175	1 378.90
FU-9805C1 P2A23	KA2208	230 VAC	49	592	67	5	255	223	3 360.41
FU-9806C1 P2A23	KA2509	230 VAC	50	788	66	6	332	292	4 587.50
FU-9803C1 P2A40	KA1238	400 VAC	21	99	49	3	149	122	753.28
FU-9804C1 P2A40	KA1725	400 VAC	30	213	56	4	204	175	1 296.10

DC filter/fans

FU-9801C1 P2D	DC8025	24 VDC	1.44	34	42	1	109	83	474.97
FU-9802C1 P2D	DC9225	24 VDC	1.92	51	44	2	121	95	431.27
FU-9803C1 P2D	DC1225	24 VDC	2.64	89	48	3	149	122	844.13

Larger sizes available on request

Exhaust filter - Without fan - used as a matching air outlet

Exhaust filter should match the size of the filter/fan to achieve optimal ventilation within the cabinet.

FU9801A P2	outlet	-	-	exhaust filter only	1	109	83	197.81
FU9802A P2	outlet	-	-	exhaust filter only	2	121	95	217.36
FU9803A P2	outlet	-	-	exhaust filter only	3	149	122	324.32
FU9804A P2	outlet	-	-	exhaust filter only	4	204	175	374.92
FU9805A P2	outlet	-	-	exhaust filter only	5	255	223	581.92
FU9806A P2	outlet	-	-	exhaust filter only	6	332	292	1 163.84

FU98B series - Filter/fan units with rain hood IP55

• Material: PC - (Polycarbonate) UV protected - self-extinguishing - UL94V-0, RoHS

AC filter/fans - (with rain hood)

FU-9801C2 P2A23	KA8025	230 VAC	20	21	30	1	109	83	900.48
FU-9802C2 P2A23	KA9225	230 VAC	20	35	35	2	121	95	1 028.14
FU-9803C2 P2A23	KA1238	230 VAC	21	99	49	3	149	122	1 117.84
FU-9804C2 P2A23	KA1725	230 VAC	30	213	56	4	204	175	1 712.41
FU-9805C2 P2A23	KA2208	230 VAC	49	592	67	5	255	223	3 998.68
FU-9806C2 P2A23	KA2509	230 VAC	50	788	66	6	332	292	5 742.13
FU-9803C2 P2A40	KA1238	400 VAC	21	99	49	3	149	122	1 058.04
FU-9804C2 P2A40	KA1725	400 VAC	30	213	56	4	204	175	1 598.56

DC filter/fans - (with rain hood)

FU-9801C2 P2D	DC8025	24 VDC	1.44	34	42	1	109	83	745.23
FU-9802C2 P2D	DC9225	24 VDC	1.92	51	44	2	121	95	769.38
FU-9803C2 P2D	DC1225	24 VDC	2.64	89	48	3	149	122	1 071.84

Larger sizes available on request

Exhaust filter with rain hood - without fan - used as an air outlet

Exhaust filter should match the size of the filter/fan to achieve optimal ventilation within the cabinet.

FU9801B P2	outlet	-	-	exhaust filter only	1	109	83	520.97
FU9802B P2	outlet	-	-	exhaust filter only	2	121	95	562.37
FU9803B P2	outlet	-	-	exhaust filter only	3	149	122	650.93
FU9804B P2	outlet	-	-	exhaust filter only	4	204	175	748.68
FU9805B P2	outlet	-	-	exhaust filter only	5	255	223	1 161.54
FU9806B P2	outlet	-	-	exhaust filter only	6	332	292	2 326.53



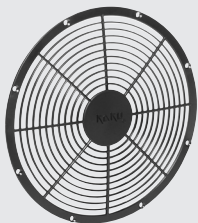
KA8025HA2B



FU9805A P2/P5-220



FU9805B P2/P5-220



FU-8825B



FG-80

KA series - Frame fans and accessories

- Temperature: -40°C...+60°C
- Shielded self lubricating ball bearing fans

type	voltage (V)	power (W)	air flow (m³/h)	noise (dB/A)	IP rating	dimensions (mm²)			price
						size	□	(D)	

AC frame fans only

KA8025HA2B	230 VAC	20	30	30	-	1	80	25	365.72
KA9225HA2B	230 VAC	20	51	35	-	2	92	25	409.42
KA1238HA2B	230 VAC	21	142	49	IP55	3	120	38	409.42
KA1725HA2B	230 VAC	30	304	56	IP55	4	172 x 150	51	932.68
KA2208HA2B 2P	230 VAC	49	845	67	IP55	5	∅ 222	60	2 534.68
KA2509HA2B 2P	230 VAC	50	1126	66	IP55	6	∅ 255	89	2 734.79
KA1238HA3B	400 VAC	21	142	49	IP55	3	120	38	405.97
KA1725HA3B	400 VAC	30	304	56	IP55	4	172 x 150	51	932.68
KA2206HA3B	400 VAC	40	722	63	IP55	5	∅ 222	60	1 914.81
KA2509HA3B 2P	400 VAC	50	1126	66	IP55	6	∅ 255	89	2 776.19

DC frame fans only

DC8025 24V	24 VDC	1.44	49	42	-	1	80	25	198.96
DC9225 24V	24 VDC	1.92	73	44	-	2	92	25	198.96
DC1225 24V	24 VDC	2.64	127	48	-	3	120	38	380.67
DC1725 24V	24 VDC	9	343	57	-	4	172 x 150	55	1 350.15

Panel mount filter units (to accommodate above fans) IP44

type	accepts fan type	with air duct	external material	IP rating	dimensions (mm²)			price	
					size	frame	cutout		
FU9801A P2	KA8025	-	ABS	-	IP44	1	109	83	197.81
FU9802A P2	KA9225	-	ABS	-	IP44	2	121	95	217.36
FU9803A P2	KA1238	-	ABS	-	IP44	3	149	122	324.32
FU9804A P2/P4-172	KA1725	P4-172	ABS	-	IP44	4	204	175	442.77
FU9805A P2/P5-220	KA2206	P5-220	ABS	-	IP44	5	255	223	744.08
FU9806A P2/P6-250	KA2509	P6-250	PC+UV	-	IP44	6	332	292	1 436.40

All metallic version (ADC12 aluminium alloy material)

FU9803AM	KA1238	-	metal	-	IP44	3	149	122	1 657.21
----------	--------	---	-------	---	------	---	-----	-----	----------

Panel mount filter units - With rain hood cover IP55

FU9801B P2	KA8025	-	PC+UV	-	IP55	1	109	83	520.97
FU9802B P2	KA9225	-	PC+UV	-	IP55	2	121	95	562.37
FU9803B P2	KA1238	-	PC+UV	-	IP55	3	149	122	650.93
FU9804B P2/P4-172	KA1725	P4-172	PC+UV	-	IP55	4	204	175	818.83
FU9805B P2/P5-220	KA2206	P5-220	PC+UV	-	IP55	5	255	223	1 323.70
FU9806B P2/P6-250	KA2509	P6-250	PC+UV	-	IP55	6	332	292	2 545.03

All metallic version (ADC12 aluminium alloy material)

FU9803BM	KA1238	-	metal	-	IP55	3	149	122	3 314.41
----------	--------	---	-------	---	------	---	-----	-----	----------

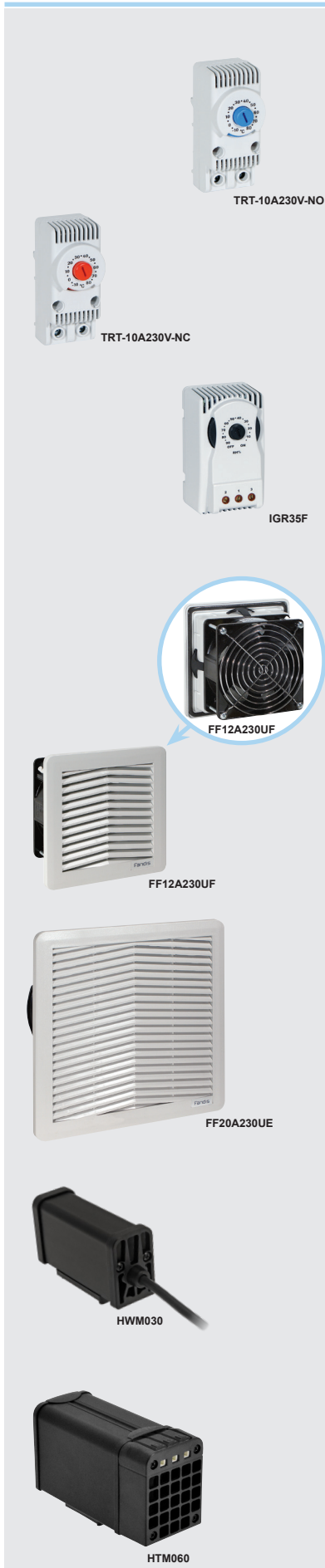
Finger guards (internal) for fans

type	for fan	colour	material	description	size	H x W		price
						H	W	
FU-8808B	KA8025	black	ABS	finger guard	1	80	80	16.79
FU-8809B	KA9225	black	ABS	finger guard	2	92	92	19.56
FU-8812B	KA1238	black	ABS	finger guard	3	120	120	21.63
FU-8817B	KA1725	black	ABS	finger guard	4	172	150	36.81
FU-8822B	KA2206	black	ABS	finger guard	5	220	∅	62.11
FU-8825B	KA2509	black	ABS	finger guard	6	250	∅	62.11
FG-80	KA8025	chrome	metal	finger guard	1	80	80	16.79
FG-92	KA9225	chrome	metal	finger guard	2	92	92	19.56
FG-120	KA1238	chrome	metal	finger guard	3	120	120	23.81
FG-172	KA1725	chrome	metal	finger guard	4	172	150	36.81
FG-220	KA2206	chrome	metal	finger guard	5	220	∅	62.11
FG-250	KA2509	chrome	metal	finger guard	6	250	∅	62.11

3-in-1 econo filter - Comprising frame, low density fabric filter and cover guard

FU-8808A	KA8025	black	ABS	3-in-1 air outlet	1	80	80	48.31
FU-8809A	KA9225	black	ABS	3-in-1 air outlet	2	92	92	51.76
FU-8812A	KA1238	black	ABS	3-in-1 air outlet	3	120	120	59.81
FU-8817A	KA1725	black	ABS	3-in-1 air outlet	4	172	150	111.56

Note: Filter mats available on request.



TRT series - Mechanical bimetal thermostats (used to control temperatures within enclosures)

Bimetal thermostats used to control temperatures inside enclosures. Suitable for different applications, available with closed-on-rise (NO) or open-on rise (NC) contact for regulation of heating and ventilation equipment or for switching signalling devices.

- Compact dimensions - (H) 68 x (W) 29 x (D) 45 mm
- Enclosure PA66 self-extinguishing to UL 94V-0
- DIN rail mountable
- IP20 protected screw terminals
- Applied standards EN 60730-1, UL approved UL873 and C22.2

type	temperature range	contact	description		price
Thermostats 1					
TRT-10A230V-NO	-10 - +80°C	1 x NO	DIN rail mount panel thermostat	(blue knob)	281.76
TRT-10A230V-NC	-10 - +80°C	1 x NC	DIN rail mount panel thermostat	(red knob)	279.46

IGR series - Mechanical hygostat

Mechanical hygrostats automatically regulate humidity inside enclosures, triggering a heater or fan when a preset relative humidity is exceeded. To prevent condensation on electric and electronic components the relative humidity is raised above the dew point.

IGR35F	10 - 90% RH	ch/over	DIN rail mounting panel hygostat		1 242.04
--------	-------------	---------	----------------------------------	--	----------

Panel ventilation 2

FF series - Complete fan-filter units (IP54)

Compact design, snap-on mounting, integrated sealing gasket preventing dust and water penetration. Ideal for all panel ventilation applications.

- Complete fan with mounting frame, removable filter and metal finger guard
- Screwless mounting (simply clips into panel cut-out)
- Plastic parts self extinguishing to UL 94V-0
- Permanent sealing gasket in polyurethane foam
- Shielded self lubricating ball bearing fans
- Filter replaceable from the front removable grill

FF series - Complete fan-filter units

type	voltage (V)	power (W)	air flow (m³/h)	noise (dB/A)	description		dimensions (mm²) frame cutout	price
FF08A230UN	230 VAC	10	10	33	complete fan filter		107 92	816.85
FF12A230UF	230 VAC	18	45	49	complete fan filter		150 124	872.74
FF15A230UF	230 VAC	32	230	50	complete fan filter		250 223	2 100.16
FF20A230UE	230 VAC	79	460	66	complete fan filter		325 291	3 729.56

Outlet filter grill/frame (without fan)

FF08U	separate panel mount ventilation outlet/filter unit		107	92	203.56
FF12U	separate panel mount ventilation outlet/filter unit		150	124	207.01
FF15U	separate panel mount ventilation outlet/filter unit		250	223	396.77
FF20U	separate panel mount ventilation outlet/filter unit		325	291	652.08

Panel heaters (anti-condensation) 3 15W - 400W

For the thermo regulation of electrical cabinets. The heaters consist of a self-extinguishing PTC element in a black anodized aluminium DIN rail mountable housing.

- Compact dimensions - DIN rail mounting
- Self-regulating PTC resistance
- Screw terminal connection (15/30W heaters supplied with 500 mm cable)
- Voltage range: 110...250 VAC
- Complies with standards: IEC/EN 60335-1 and IEC 60004-1

type	heating power	current mA	description		dimensions (mm) (H) (W) (D)	price
HWM015	15 W	65	DIN rail mount panel heater		78 28 49	839.42
HWM030	30 W	130	DIN rail mount panel heater		108 28 49	839.42
HTM060	60 W	260	DIN rail mount panel heater		138 62 85	1 174.76
HTM100	100 W	475	DIN rail mount panel heater		188 62 85	1 415.70
HTM150	150 W	770	DIN rail mount panel heater		238 62 85	1 702.49



TP19U230B54

TP series - Roof mount exhaust fan units 4

Roof exhaust fan units used to directly extract heat from the upper region of the cabinet facilitating effective internal air flow. Equipped with a high-head radial fan.

- Mounting via 8 x Ø4 mm screws (*mounts through 175 mm² cutout*)
- Plastic parts in PC/ABS alloy and aluminium self extinguishing to UL 94V-0
- Permanent sealing gasket in polyurethane foam
- Compact dimensions, height: total 94 mm / hood 62 mm
- Colour: RAL 7035 (*others colours available on request*)

type	voltage (V)	power (W)	air flow (m³/h)	noise (dB/A)	description	dimensions (mm)			price
						(H)	(W)	(D)	
Exhaust Fan (roof mount) TP19U230B	230 VAC	70	500	68	roof exhaust fan	324	324	94	3 378.10
Exhaust Fan (roof mount) TP19U230B54	230 VAC	70	420	68	roof exhaust fan	324	324	94	3 859.61

LED Lamp for switchboards 5

During maintenance and inspection on switchboards it is essential for to have a good level of lighting LEDs provides effective illumination within electrical cabinets at significantly low consumption. Switching via a mounted switch or version with a PIR sensor which detects motion within 120° radius with delayed auto off with no detected presence.

type	power	supply voltage	description	dimensions (mm)			price
				(H)	(W)	(D)	

Fandis FLL - Panel lamps

Termination is via "push-in" cage clamp terminals on both sides with an incorporated release button
Magnetic fastening for simple positioning on metallic surfaces (*with optional magnet set*)
Lamp rotates to six different positions on base (*max. to 40°*)

- LED light output: 315 Lm (*luminous flux*), 120°, daylight, colour temperature 7.100K
- Operating temp: -30 to +60°C
- Lifetime: 160.000 h at 25°C
- Certification: CE; UL E237844 (UL 508 and CSA C22.2 No. 14)

FLL-300565U-S	5 Watt	115...230 VAC	LED panel lamp with switch	32	356	48	1 474.35
FLL-300565U-IR	5 Watt	115...230 VAC	LED lamp with PIR sensor	32	356	48	1 758.41
FLL-2MA	magnet		magnet mounting kit for lamps (<i>2 magnets</i>)				139.16



FLL-300565U-IR

Systems and components for enclosures





SlimLine Pro - 8500 series - Cabinet cooling units

SlimLine Pro series cabinet cooling air conditioners feature an innovative one man mounting system permitting screwless installation with maintenance free operation due to the eco-friendly filter less construction. The compact, slim construction combined with modern design features provide excellent size to performance ratio to meet modern day requirements. Providing improved cooling performance ensuring total reliability in all industrial applications.

- Innovative mounting system - (*screwless, one man mounting*)
- Simplified panel cutout - (*ease mounting even further*)
- Integrated condensate evaporation
- Temperature range 10°C to 60°C
- Standard material: Powder coated mild steel housing RAL 7035 (*light grey*)
- Enhanced protection class IP 56
- Compliance to NEMA / UL type 3, 3R, 12, 4 und 4X
- Can be mounted external or recessed (*with only 35-50 mm protruding*) into the panel

type	cooling capacity	supply voltage	description	dimensions (mm)				price
				(H)	(W)	(D)	Ext.	
L35L35								

SlimLine Pro 8500 series

850600001	670W	230 VAC	SlimLine Pro panel air conditioner	600	250	135	(25)	36 088.13
850800001	825W	230 VAC	SlimLine Pro panel air conditioner	950	305	210	(35)	42 459.33
851200001	1.2kW	230 VAC	SlimLine Pro panel air conditioner	950	305	210	(35)	47 070.98
851500001	1.5kW	230 VAC	SlimLine Pro panel air conditioner	1350	395	210	(35)	59 042.85
852000001	2.0kW	230 VAC	SlimLine Pro panel air conditioner	1350	395	210	(35)	64 436.52
852500001	2.5kW	230 VAC	SlimLine Pro panel air conditioner	1350	395	210	(35)	74 637.34
854000001	4.0kW	230 VAC	SlimLine Pro panel air conditioner	1550	455	270	(50)	95 763.50

SlimLine series - Filter less technology air conditioners

SlimLine series air conditioners provide maximum power-to-size ratio compatible with market standards ensuring simple integration with cabinet systems. Designed to operate with minimum maintenance, due to eco-friendly filter less construction. The optimised wide-ribbed aluminium condenser provides improved cooling performance ensuring total reliability in all industrial applications.

Can be mounted externally or internally (*with only 25 mm protruding when recess mounted*)

- Compressor type: Rotary piston compressor
- Mounting: Internal / External
- Supply: 230V - 50/60Hz (*others on request*)

42660001	320 W	230 VAC	SlimLine panel air conditioner	520	270	110	(25)	30 268.95
42700001	600 W	230 VAC	SlimLine panel air conditioner	810	395	145	(25)	41 401.30
42710001	820 W	230 VAC	SlimLine panel air conditioner	980	395	145	(25)	43 954.38
42720001	1100 W	230 VAC	SlimLine panel air conditioner	1250	395	145	(25)	49 313.55
42740001	1500 W	230 VAC	SlimLine panel air conditioner	1550	395	145	(25)	56 719.78

ComPact series - Economical all-round systems

ComPact series air conditioners optimise high efficiencies with outstanding COP values throughout the range, the built-in controller displays temperature, operating status and can be simply adjusted. Surface treated condenser with high fin separation provide virtually maintenance free service.

- Operating temp. range: 20°C...55°C
- Compressor type: Reciprocating compressor
- Mounting: External mounting
- Colour: RAL 7035 (*other colours available on request*)

43040001	320W	230 VAC	ComPact panel air conditioner	500	280	200	-	24 817.78
43050001	550W	230 VAC	ComPact panel air conditioner	650	315	260	-	26 726.84
43080001	750W	230 VAC	ComPact panel air conditioner	650	315	260	-	29 555.93
43100001	1000W	230 VAC	ComPact panel air conditioner	650	315	260	-	35 237.11
43150001	1500W	230 VAC	ComPact panel air conditioner	980	395	260	-	41 056.29
43200001	2000W	230 VAC	ComPact panel air conditioner	980	395	260	-	47 991.01

SlimLine TOP series - Top mounted filter less air conditioners

- Compressor type: Rotary piston compressor
- Mounting: Roof mounting
- Supply: 230V - 50/60Hz

44820001	450 W	230 VAC	roof mount air conditioner	230	430	330	-	40 262.77
45550001	1100 W	230 VAC	roof mount air conditioner	400	600	400	-	51 613.62

Variable speed DC air conditioner

- Compressor type: Speed controlled rotary compressor
- Mounting: Internal / External

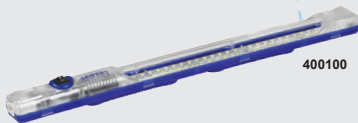
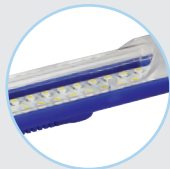
20250241	120 - 450W	24 VDC	SlimLine air conditioner	465	296	85		77 339.93
20250481	120 - 450W	48 VDC	SlimLine air conditioner	465	296	85		77 339.93



TG 3102-24V



1002303



400100

TG series - Thermoelectric cooling units IP66

For cooling enclosures or electronic components

Thermoelectric cooling units are an effective solution for the conditioning of enclosures or electronic components. Electric energy transferred heat without the use of hazardous gases or liquids. The core of the system are the thermoelectric modules (*Peltier modules*), permitting heat absorption from one side (*cold side*) and heat expulsion to the ambient from the other side.

- External or recessed mounting in almost any position (*except roof mounting*)
- Suitable for indoor and outdoor application, ingress protection rating of IP66
- Stainless steel AISI 304 (V2A)
- Maintenance free
- Easy installation

type	voltage (V)	cooling power	rated current	cutout dimensions (mm)	dimensions (mm)			price
					(H)	(W)	(D)	

SoliTherm Peltier - Panel cooling units

- Temperature range: -20°C...+65°C

TG 3102-24V	24 VDC	100W	4.8A	260 x 160 mm	304	200	138	21 413.68
TG 3200-24V	24 VDC	200W	9.0A	370 x 155	400	180	171	32 684.03

Drip trays (to collect condensate from the cold internal dissipater)

1003303	drip tray	stainless steel for above TG 3102-24V thermoelectric units	2 694.54
1002303	drip tray	stainless steel for above TG 3200-24V thermoelectric units	2 410.48

Seifert SL 4000 series - Panel lamps IP20

LED Lamp for switchboards

Maintenance/inspection of switchboards require a good level of lighting to clearly see components within the panel. LEDs provide effective illumination within electrical cabinets at significantly low consumption. Slimline design provides greater installation versatility and guarantee of safety. Switching is via a mounted ON/OFF switch or version with a PIR sensor which detects motion with delayed auto off.

- Operating voltage: 24...265 VAC/DC
- LED: 400 Lm, 120°, daylight, colour temperature 6500K
- Operating temp: -30...70°C
- Approvals: CE, cURus

type	power	description	dimensions (mm)			price
			(H)	(W)	(D)	
400100	4 Watt	LED panel lamp with on/off rocker switch	32	350	28	1 418.00
400000	4 Watt	LED panel lamp with infrared sensor	32	350	33	1 702.06

Plug-in connectors for above SL4000 panel lamps

91.921.3053.0	white	female connector plug for panel lamps	18	53	14	79.36
91.922.3053.0	white	male connector plug for panel lamps	18	53	14	73.61

Note: Termination via 2 pin latching plug (**supplied separately**) on both ends of the lamp. Mounting is via supplied mounting clips or incorporated magnets for simple positioning on metallic surfaces.

N - Safety



EM - Panel door limit switch 6A 240 VAC IP20

Used for the detection of panel doors and gates opening or closing as a safety measure to disconnect system if door is opened or to activate an internal panel light for illumination of the innards of the panel when the door is opened.

- Contact configuration: 1NO+1NC contact (NC contact with positive opening)
- Dimensions: (H) 59 x (W) 28 x (D) 24.4 mm (*including plunger*)
- Material: Fire retardant material used for mechanical & electrical safety

type	current Ith	actuator	description	price
MLASS3A5	6A	rounded metal plunger	panel door limit switch	<i>see page N-7 for pricing.</i>
HC122505	cover	terminal protection cover for above panel door limit switch		



MLASS3A5



SCAME

3P+N-F67-16A-6h-380-415V~
501,1686 CE MADE IN ITALY

 **SCAME**
electrical solutions

 **wieland**

 **REMA**[®]