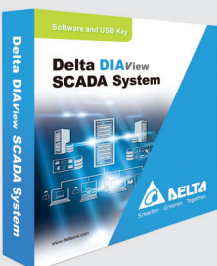
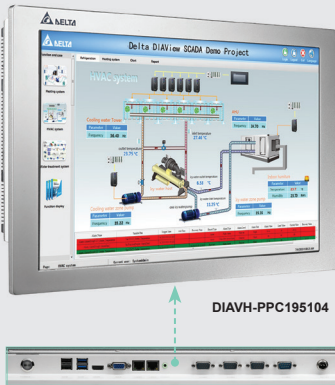


new



Industrial PCs

In response to the market demands for industrial information management, Delta presents the Industrial Panel PC (PPC) and Industrial box PC (BPC) which provides cost-effective and highly reliable panel computer solutions for industrial applications. It adopts a variety of specifications and supports operating systems such as Windows 7/8/10, Linux, and more.

- Applications:**
- Factory digitalization
 - Logistic applications: Transportation/stereoscopic warehouse
 - Inspection and monitoring of electronic equipment
 - Equipment monitoring systems

type	display size	hard drive SSD MSATA	(OS) system	CPU intel	dimensions (mm) (H) (W) (D)		
------	--------------	----------------------	-------------	-----------	--------------------------------	--	--

Industrial Panel PC (PPC)

The Industrial Panel PC (PPC), built with an aluminium case, is composed of a front panel and a rear panel with heat sink. It is slim and sealed with a fanless design, and is suitable for applications in the rubber machinery, solar photovoltaic, automotive control and other industrial fields.

- Audio: Input / output × 1
- Max capacity: 8GB(Celeron) 16GB Icore
- Serial COM: Port x 4 (RS-232 x 3, RS-422/485 x 1)
- Software: Win 10 Professional - where applicable / supports Linux
- Resolution: **10 & 15"** - 1024 x 768 pixels / **19"** - 1440 x 900 pixels
- Supports: Mini-PCIE bus for WiFi communication expansion and more
- Ports: USB 3.0 x 4 Ports/ 4GB RAM / Intel® I211 Gigabit Ethernet Controller × 2

Standard PPC

DIAVH-PPC10J103	10"	128GB	No Win	Celeron	58	198	258
DIAVH-PPC15J103	15"	128GB	No Win	Celeron	59	300	380

Advanced PPC

DIAVH-PPC153103A	15"	256GB	No Win	I3 (6 th GEN)	59	300	380
DIAVH-PPC195104	19"	512GB	Win 10	I5 (6 th GEN)	57	308	475

Industrial Box PC (BPC)

The DIAVH Industrial Box PC (BPC) is compact and robust with fanless design and aluminium case featuring cooling effects. Its rugged structure and excellent vibration resistance make it highly protective against pollution, dust, and electromagnetic interference when applied in industrial environments, such as machinery equipment, transportation, and infrastructure.

- Audio: Input / output × 1
- Max capacity: 4GB RAM (up to 16GB)
- Software: Win 7 32 bit pro / supports Linux
- Serial COM: Serial Ports x 6 (RS-232 x 5, RS-422/485 x 1)
- Ports: USB 3.0 x 6 Ports / Intel® I211 Gigabit Ethernet Controller x 2
- Supports: Supports Mini-PCIE bus for WiFi communication expansion
- Anti-Vibration, 5 - 19 Hz / 1.0 mm amplitude; 19 - 200 Hz / 1.0 g acceleration
- Antishock, 10g acceleration, 11ms duration

type	hard drive SSD MSATA	OS	CPU intel	dimensions (mm) (H) (W) (D)		
------	----------------------	----	-----------	--------------------------------	--	--

DIAVH-IPC005104	512GB SSD	Win Pro	I5 (6 th GEN)	211.5	200	67
------------------------	-----------	---------	--------------------------	-------	-----	----

DIAview SCADA system

The DIAView SCADA system can be widely applied in industries such as machinery, metallurgy, water treatment, HVAC, packaging, central heating control, environmental monitoring, textiles, energy management, transportation, smart buildings and others.

- Friendly graphical demonstration
- Strong and efficient alarm system
- Easy-to-learn VBScript language
- I/O points: 64, 128, 256, 512, 1000, 1500, 3000 and unlimited
- Licensing: via USB hardware key to enable all authorizations
- Stable industrial communication, seamless integration with Delta PLC & other products

type	license type	description	No. tags
------	--------------	-------------	----------

DIAV-010640000C	64 points	DIAview SCADA license for	64 tags
DIAV-011280000C	128 points	DIAview SCADA license for	128 tags
DIAV-012560000C	256 points	DIAview SCADA license for	256 tags
DIAV-015120000C	512 points	DIAview SCADA license for	512 tags
DIAV-0101K0000C	1000 points	DIAview SCADA license for	1000 tags
DIAV-011K50000C	1500 points	DIAview SCADA license for	1500 tags
DIAV-0103K0000C	3000 points	DIAview SCADA license for	3000 tags
DIAV-0199K0000C	unlimited	DIAview SCADA license for	unlimited