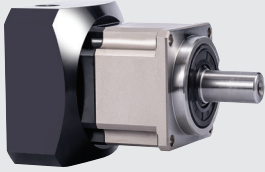


C₂

new



WAB...



WPFR...



ASD-CAPW...



ASD-CAEN...

Gearboxes for ECMA series servo motors

- Low noise, helical gears allows for smooth and quite gear meshing
- Planetary wheel with needle design increases the contact area to improve the rigidity and output torque
- Synthetic lubricating grease and sealed IP65 design requires no maintenance during the products lifetime
- Gears are carburized and quenched to HRC62 with low carbon steel surface for optimum wear and impact toughness

type	ECMA motor	ratio	rated torque	backlash arcmin	dimensions (mm)		
					PCD	flange	shaft Ø
Straight gearboxes (helical gears)							
WAB-060-005-K-P1	200 - 400W	5:1	60	≤3	70	60 x 60	16
WAB-060-007-K-P1	200 - 400W	7:1	50	≤3	70	60 x 60	16
WAB-060-010-K-P1	200 - 400W	10:1	40	≤3	70	60 x 60	16
WAB-090-003-K-P1	750W	3:1	130	≤3	100	90 x 90	22
WAB-090-007-K-P1	750W	7:1	140	≤3	100	90 x 90	22
WAB-115-003-K-P1	1.5 - 2kW	3:1	208	≤3	130	115 x 115	32
WAB-142-003-K-P1	3 - 4.5kW	3:1	342	≤3	165	142 x 142	40
Angle gearboxes (spur gears)							
WPFR-060-005-K-P2	200 - 400W	5:1	40	≤15	70	60 x 60	14
WPFR-060-007-K-P2	200 - 400W	7:1	20	≤15	70	60 x 60	14
WPFR-060-010-K-P2	200 - 400W	10:1	12	≤15	70	60 x 60	14
WPFR-090-003-K-P2	750W	3:1	40	≤15	100	92 x 92	20
WPFR-090-007-K-P2	750 W	7:1	40	≤15	100	92 x 92	20
WPFR-120-003-K-P2	1.5 - 2kW	3:1	125	≤15	130	120 x 120	35

Note: Other ratios, frame sizes and precision options available on request.

Servo drive and motor accessories

ASD-CN5C0050	50 pin solder plug	for series	ASD-A2
ASD-IF-SC5020	20 pin adaptor, push in term.	for series	ASD-A2
ASD-BM-50A	50 pin breakout board	for series	ASD-A2
UC-CMC003-01A	CANopen comms cable RJ45 (0.3m)	for series	ASD-A2
UC-CMC010-01A	CANopen comms cable RJ45 (1m)	for series	ASD-A2
TAP-CN03	Canopen distribution box	for series	ASD-A2
UC-PRG030-02A	USB type A - USB type B	for series	ASD-A2
ASD-CARS0003	9 pin D-SUB female - Firewire	for series	ASD-A2/B2
ASD-CNIE0B06	RS-485 Splitter 2x RJ45	for series	ASD-A2/B2
ASD-CNUS0A08	USB type A - Firewire	for series	ASD-B2
ASDBCND50044	D-SUB 44 Pin solder plug	for series	ASD-B2

ASDA and ECMA connecting cables

type	ECMA range	power	encoder	brake	for drive series	cable length
		cable	cable	motor		
ASDBCAPW0000	100 - 750W	•	–	–	ASD-A2	plug
ASD-ABEN0000	100 - 750W	–	•	•	ASD-A2	plug
ASD-ABEN0003	100 - 750W	–	•	•	ASD-A2	3m
ASD-ABPW0005*	100 - 750W	•	–	–	ASD-A2	5m
ASD-ABPW1105	100 - 750W	•	–	–	ASD-A2	5m
ASD-ABEN0005*	100 - 750W	–	•	•	ASD-A2	5m
ASD-CAPW1000	1kW	•	–	•	ASD-A2	plug
ASD-CAEN1000	1 - 15kW	–	•	•	ASD-A2	plug
ASD-CAPW1005*	1kW	•	–	–	ASD-A2	5m
ASD-CAPW1105	1kW	•	–	–	ASD-A2	5m
ASD-CAEN1005*	1 - 15kW	–	•	•	ASD-A2	5m
ASD-CAPW1205	2kW	•	–	–	ASD-A2	5m
ASD-CAPW1305	2kW	•	–	•	ASD-A2	5m
ASD-CAPW2205	3 - 5.5kW	•	–	–	ASD-A2	5m
ASD-CAPW3205	7.5kW	•	–	–	ASD-A2	5m
ASD-CAPW4000	11 - 15kW	•	–	•	ASD-A2	plug
ASD-CAPW4505	11kW	•	–	–	ASD-A2	5m
ASD-CAPW4605	15kW	•	–	–	ASD-A2	5m
ASDBCAPW0000	100 - 750W	•	–	–	ASD-B2	plug
ASDBCEN0000	100 - 750W	–	•	•	ASD-B2	plug
ASDBCAPW0205*	100 - 750W	•	–	–	ASD-B2	5m
ASDBCEN0005*	100 - 750W	–	•	•	ASD-B2	5m
ASD-CAPW1000	1 - 1.5kW	•	–	•	ASD-B2	plug
ASDBCEN1000	1 - 1.5kW	–	•	•	ASD-B2	plug
ASDBCAPW1205	1 - 1.5kW	•	–	–	ASD-B2	5m
ASDBCEN1005	1 - 1.5kW	–	•	•	ASD-B2	5m

* For 3m length cables, replacement (5) with 3