














CONTROL & SIGNALLING

D

Pushbuttons and selector switches		Lovato	D-1...8
Pilot lights		Lovato Sirena EM	D-3...5 D-17 D-26/28
Pushbutton stations		Lovato TER	D-6 D-11
Rotary cam switches		Lovato Baco	D-9 D-10
Pendant control stations		TER	D-11...12
Joystick controllers		TER	D-13...14
Slip ring collectors		TER	D-14
Wormgear / Rotary limit switches		TER	D-15...16
Signalling devices		Sirena	D-17...24
Signal towers/ Stack lights		Sirena Lovato	D-21...23 D-25
Sirens		Sirena	D-24
Panel signalling & pilot devices		EM	D-26...28
Panel mount accessories		EM	D-29



Scan to watch video

Platinum series Ø22 mm pushbuttons and selector switches

- Material resistant to oils, solvents and hydrocarbons
- Elegant style ergonomic design (*combining aesthetics with industrial durability*)
- IP66/IP67/IP69K degree of protection for use even in extreme temp. -25°C - +70°C

Actuators are supplied without **LPX AU120** contact block and support (to be ordered separately)

type	colour	symbol	description	action
------	--------	--------	-------------	--------

Pushbutton actuators

LPC B102	black	–	flush momentary pushbutton actuator	spring return
LPC B103	green	–	flush momentary pushbutton actuator	spring return
LPC B104	red	–	flush momentary pushbutton actuator	spring return
LPC B105	yellow	–	flush momentary pushbutton actuator	spring return
LPC B106	blue	–	flush momentary pushbutton actuator	spring return
LPC B202	black	–	extended head pushbutton actuator	spring return
LPC B203	green	–	extended head pushbutton actuator	spring return
LPC B204	red	–	extended head pushbutton actuator	spring return
LPC B205	yellow	–	extended head pushbutton actuator	spring return
LPC B206	blue	–	extended head pushbutton actuator	spring return

Pushbutton actuators (with symbols)

LPC B1104	red	○	flush momentary pushbutton actuator	spring return
LPC B1113	green	I	flush momentary pushbutton actuator	spring return
LPC B1134	red	STOP	flush momentary pushbutton actuator	spring return
LPC B1163	green	START	flush momentary pushbutton actuator	spring return
LPC B1142	black	←	flush momentary pushbutton actuator	spring return
LPC B1152	black	↑	flush momentary pushbutton actuator	spring return
LPC B1196	blue	RESET	flush momentary pushbutton actuator	spring return
LPC B2104	red	○	extended head pushbutton actuator	spring return

Alternate action pushbutton actuator (push on - push off)

Only use contact blocks **LXP C10A (NO)** and **LPX C01 (NC)** with push on - push off pushbuttons.

LPC Q102	black	–	flush alternate action p/button actuator	alternate
LPC Q103	green	–	flush alternate action p/button actuator	alternate
LPC Q104	red	–	flush alternate action p/button actuator	alternate
LPC Q105	yellow	–	flush alternate action p/button actuator	alternate
LPC Q106	blue	–	flush alternate action p/button actuator	alternate
LPC Q202	black	–	extended head alternate action actuator	alternate
LPC Q203	green	–	extended head alternate action actuator	alternate
LPC Q204	red	–	extended head alternate action actuator	alternate
LPC Q205	yellow	–	extended head alternate action actuator	alternate
LPC Q206	blue	–	extended head alternate action actuator	alternate

Mushroom head pushbutton actuators

LPC B6144	red	Ø40 mm	mushroom pushbutton actuator	spring return
LPC B6164	red	Ø60 mm	mushroom pushbutton actuator	spring return
LPC B6344	red	Ø40 mm	latching mushroom pushbutton actuator	twist release

Emergency stopping (ISO 13850 compliant)

LPC B6634	red	Ø30 mm	latching mushroom pushbutton actuator	twist release
LPC B6644	red	Ø40 mm	latching mushroom pushbutton actuator	twist release
LPC B6744	red	Ø40 mm	latching mushroom pushbutton actuator	pull release
LPC B6844	red	Ø40 mm	latching mushroom pushbutton actuator	key release

Multi pushbutton actuators

Double-touch pushbutton actuators

LPC B7113	grn/red	–	double touch pushbutton actuator (<i>flush</i>)	spring return
LPC B7191	blk/blk	↓↑	double touch pushbutton actuator (<i>flush</i>)	spring return
LPC B71S02	grn/grn	+ –	double touch pushbutton actuator (<i>flush</i>)	spring return
LPC B7223	grn/red	I-O	double touch actuator (<i>ext. red button</i>)	spring return
LPC BL7223	grn/red	I-O	double touch + indicator (<i>ext. red button</i>)	spring return

Triple-touch pushbutton actuators (red extended stop button)

LPC B7345	grn/red	I-STOP-II	triple-touch pushbutton actuator	spring return
LPC B7355	grn/red	↑-STOP-↓	triple-touch pushbutton actuator	spring return
LPC B7365	grn/red	←-STOP-→	triple-touch pushbutton actuator	spring return
LPC B7375	grn/red	↙-STOP-↘	triple-touch pushbutton actuator	spring return



LPC B103



LPC B204



LPC B2104



LPC B6144



LPC B6644



LPC B6844



LPC B7191



LPC B7223



LPC B7355



LPC S120



LPC S230



LPC S320



LPC R1196



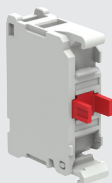
LPC ZS...



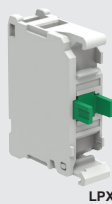
LPC D01



LPX AU120



LPX C01



LPX C10

Platinum series Ø22 mm pushbuttons and selector switches

- IP66 - IP67 - IP69K degree of protection for use in even in extreme temperatures -25° to +70°C
- Actuators supplied without **LPX AU120** contact block and support (*to be ordered separately*)

type	colour	positions		description	spring return
------	--------	-----------	--	-------------	---------------

Selector switch actuators

LPC S120	black	2 position	O - I	selector switch actuator	-
LPC S121	black	2 position	O - I	selector switch actuator	from Right
LPC S130	black	3 position	I - O - II	selector switch actuator	I - O - II
LPC S131	black	3 position	I - O - II	selector switch actuator	from L+R
LPC S132	black	3 position	I - O - II	selector switch actuator	from Left
LPC S133	black	3 position	I - O - II	selector switch actuator	from Right

Lever selector switch actuators

LPC S220	black	2 position	O - I	lever selector actuator	O - I
LPC S221	black	2 position	O - I	lever selector actuator	from Right
LPC S230	black	3 position	I - O - II	lever selector actuator	I - O - II
LPC S231	black	3 position	I - O - II	lever selector actuator	from L+R
LPC S232	black	3 position	I - O - II	lever selector actuator	from Left
LPC S233	black	3 position	I - O - II	lever selector actuator	from Right

Key selector switch actuators

type	colour	positions	key remove	description	spring return
------	--------	-----------	------------	-------------	---------------

LPC S320	black	2 pos (O-I)	Left	key switch actuator	-
LPC S321	black	2 pos (O-I)	L+R	key switch actuator	-
LPC S340	black	2 pos (O-I)	Left	key switch actuator	from Right
LPC S330	black	3 pos (I-O-II)	Centre	key switch actuator	-
LPC S331	black	3 pos (I-O-II)	L+C+R	key switch actuator	-
LPC S332	black	3 pos (I-O-II)	Left	key switch actuator	-
LPC S333	black	3 pos (I-O-II)	Right	key switch actuator	-
LPC S360	black	3 pos (I-O-II)	Centre	key switch actuator	from Right
LPC S370	black	3 pos (I-O-II)	Centre	key switch actuator	from L+R

Mechanical reset pushbuttons (*fine depth adjustment from face of button*)

LPC R1002	black	-		mechanical reset button (<i>adj. length</i>)	0-150 mm
LPC R1004	red	-		mechanical reset button (<i>adj. length</i>)	0-150 mm
LPC R1006	blue	-		mechanical reset button (<i>adj. length</i>)	0-150 mm
LPC R1196	blue	(RESET)		mechanical reset button (<i>adj. length</i>)	0-150 mm

Pulse-tone monoblock buzzer Ø22 mm *continuous or pulse tone (10 cm)*

LPC ZSB	black	18 - 30 VAC/DC	(IP40)	panel mount acoustic buzzer	90dB
LPC ZSM	black	185 - 265 VAC	(IP40)	panel mount acoustic buzzer	90dB
LPC ZSMIP	black	185 - 265 VAC	(IP65)	panel mount acoustic buzzer	80dB

USB and RJ45 communication interfaces Ø22 mm *IP65 (with cap closed)*

LPC D01	black	USB		panel mnt communication interface	A-A
LPC D03	black	USB		panel mnt communication interface	A-B
LPC D06	black	RJ45		panel mnt communication interface	Ethernet

Contact blocks and support for control devices

Contact block support max. of 9 contact blocks (3 rows of 3) - *actuator dependant*

LPX AU120 support contact block support / mounting adaptor for 3 contact blocks

Contact blocks *requires LPX AU120 (above) to mount onto actuators*

- Self cleaning, dual scrape/oscillating action contacts
- IEC rated insulation voltage: 690V - thermal current Ith: 10A
- Can be clipped onto the back of another contact block

LPX C10	1 x NO	standard	green	screw term. contact block for control devices
LPX C01	1 x NC	standard	red	screw term. contact block for control devices
LPX C10A	1 x NO	early make	green	screw term. contact block for control devices
LPX C01D	1 x NC	late break	red	screw term. contact block for control devices

- Push-in technology for rigid cables or with ferrules (*no screw driver required for insertion*) guaranteed retaining force over time even in presence of vibration and/or impact

LPX CS10	1 x NO	standard		push-in term. contact block for control devices
LPX CS01	1 x NC	standard		push-in term. contact block for control devices



LPL 3



LPC BL103



LPC BL204



LPC SL1215



LPC BL6644



LPX AU120

Platinum series illuminated Ø22 mm control devices

- Material resistant to oils, solvents and hydrocarbons
- Elegant style, ergonomic design (*combining aesthetics with industrial durability*)
- IP66 - IP67 - IP69K degree of protection for use in even in extreme temperatures -25° to +70°C
- Actuators are supplied without **LPX AU120** contact block support and LED modules (*to be ordered separately*)

type	colour	positions	description	action
------	--------	-----------	-------------	--------

Pilot light heads

LPL 3	green	illuminated	Ø22 mm pilot light head only	–
LPL 4	red	illuminated	Ø22 mm pilot light head only	–
LPL 5	yellow	illuminated	Ø22 mm pilot light head only	–
LPL 6	blue	illuminated	Ø22 mm pilot light head only	–
LPL 7	t/parent	illuminated	Ø22 mm pilot light head only	–

Flush illuminated pushbutton actuators

LPC BL103	green	illuminated	flush momentary pushbutton actuator	spring return
LPC BL104	red	illuminated	flush momentary pushbutton actuator	spring return
LPC BL105	yellow	illuminated	flush momentary pushbutton actuator	spring return
LPC BL106	blue	illuminated	flush momentary pushbutton actuator	spring return

Alternate action pushbutton actuators (*push on - push off*)

LPC QL103*	green	illuminated	flush alternate action p/button actuator	alternate
LPC QL104*	red	illuminated	flush alternate action p/button actuator	alternate
LPC QL105*	yellow	illuminated	flush alternate action p/button actuator	alternate
LPC QL106*	blue	illuminated	flush alternate action p/button actuator	alternate

Extended head illuminated pushbutton actuators

LPC BL203	green	illuminated	extended head pushbutton actuator	spring return
LPC BL204	red	illuminated	extended head pushbutton actuator	spring return
LPC BL205	yellow	illuminated	extended head pushbutton actuator	spring return
LPC BL206	blue	illuminated	extended head pushbutton actuator	spring return
LPC BL207	t/parent	illuminated	extended head pushbutton actuator	spring return

Alternate action pushbutton actuators (*push on - push off*)

LPC QL203*	green	illuminated	extended head alternate action actuator	alternate
LPC QL204*	red	illuminated	extended head alternate action actuator	alternate
LPC QL205*	yellow	illuminated	extended head alternate action actuator	alternate
LPC QL206*	blue	illuminated	extended head alternate action actuator	alternate
LPC QL207*	t/parent	illuminated	extended head alternate action actuator	alternate

* Only use contact blocks **LXP C10A (NO)** and **LXP C01 (NC)** with push on - push off pushbuttons.

Illuminated selector switch actuators

				spring return
LPC SL1203	green	2 position	illuminated selector switch actuator	O - I
LPC SL1204	red	2 position	illuminated selector switch actuator	O - I
LPC SL1205	yellow	2 position	illuminated selector switch actuator	O - I
LPC SL1206	blue	2 position	illuminated selector switch actuator	O - I
LPC SL1208	white	2 position	illuminated selector switch actuator	O - I
LPC SL1213	green	2 position	illuminated selector switch actuator	from Right
LPC SL1214	red	2 position	illuminated selector switch actuator	from Right
LPC SL1215	yellow	2 position	illuminated selector switch actuator	from Right
LPC SL1216	blue	2 position	illuminated selector switch actuator	from Right
LPC SL1218	white	2 position	illuminated selector switch actuator	from Right
LPC SL1303	green	3 position	illuminated selector switch actuator	I - O - II
LPC SL1304	red	3 position	illuminated selector switch actuator	I - O - II
LPC SL1305	yellow	3 position	illuminated selector switch actuator	I - O - II
LPC SL1306	blue	3 position	illuminated selector switch actuator	I - O - II
LPC SL1308	white	3 position	illuminated selector switch actuator	I - O - II
LPC SL1313	green	3 position	illuminated selector switch actuator	from L+R
LPC SL1314	red	3 position	illuminated selector switch actuator	from L+R
LPC SL1315	yellow	3 position	illuminated selector switch actuator	from L+R
LPC SL1316	blue	3 position	illuminated selector switch actuator	from L+R
LPC SL1318	white	3 position	illuminated selector switch actuator	from L+R

Illuminated mushroom head pushbutton actuators

LPC BL6144	red	illuminated	Ø40 mm mushroom head actuator	spring return
LPC BL6644	red	illuminated	Ø40 mm latching m/room head actuator	twist release

Support for contact blocks and LED modules - clips onto control devices

LPX AU120	support	contact	block support / mounting adaptor for 3 contact blocks	LED modules for above (see page D-4)
-----------	---------	---------	---	--------------------------------------

Platinum series Ø22 mm control device accessories

LED indicating modules (protected) clips onto LPX AU120 support

- Over voltage protection
- Protection against stray current in wiring
- Flickering phenomenon reduction
- Electrical life: 100.000 hours

type	colour	supply	description
LED modules (steady light) (screw type)			
LPX LPB3	green	12 - 30 VAC/DC	LED integrated steady lamp module
LPX LPB4	red	12 - 30 VAC/DC	LED integrated steady lamp module
LPX LPB5	yellow	12 - 30 VAC/DC	LED integrated steady lamp module
LPX LPB6	blue	12 - 30 VAC/DC	LED integrated steady lamp module
LPX LPB8	white	12 - 30 VAC/DC	LED integrated steady lamp module
LPX LPE*	*	85 - 140 VAC	LED integrated steady lamp module
LPX LPM3	green	185 - 265 VAC	LED integrated steady lamp module
LPX LPM4	red	185 - 265 VAC	LED integrated steady lamp module
LPX LPM5	yellow	185 - 265 VAC	LED integrated steady lamp module
LPX LPM6	blue	185 - 265 VAC	LED integrated steady lamp module
LPX LPM8	white	185 - 265 VAC	LED integrated steady lamp module

type	colour	supply	description
LED modules (steady light) (push-in type)			
LPX LPSB3	green	12 - 30 VAC/DC	LED integrated steady lamp module
LPX LPSB4	red	12 - 30 VAC/DC	LED integrated steady lamp module
LPX LPSB5	yellow	12 - 30 VAC/DC	LED integrated steady lamp module
LPX LPSB6	blue	12 - 30 VAC/DC	LED integrated steady lamp module
LPX LPSB8	white	12 - 30 VAC/DC	LED integrated steady lamp module
LPX LPSM3	green	185 - 265 VAC	LED integrated steady lamp module
LPX LPSM4	red	185 - 265 VAC	LED integrated steady lamp module
LPX LPSM5	yellow	185 - 265 VAC	LED integrated steady lamp module
LPX LPSM6	blue	185 - 265 VAC	LED integrated steady lamp module
LPX LPSM8	white	185 - 265 VAC	LED integrated steady lamp module

Note: Push-in technology for rigid cables or with ferrules (no screw driver required for insertion) guaranteed retaining force over time even in presence of vibration and/or impact.

type	colour	supply	description
LED modules (flashing light) (screw type)			
LPX LFB*	*	12 - 30 VAC/DC	LED integrated flashing lamp module
LPX LFE*	*	85 - 140 VAC	LED integrated flashing lamp module
LPX LFM*	*	185 - 265 VAC	LED integrated flashing lamp module

* Replace with: 3 (green) / 4 (red) / 5 (yellow) / 6 (blue) / 8 (white) - for colours

Monoblock LED pilot lights Ø22 mm mounting

- Electrical life: >30.000 hours
- Protection degree: IP66, IP67 and IP69K
- Compliant with standards: IEC/EN 60947-1, IEC/EN60947-5-1, UL508, CSA C22.2 no 14

type	colour	supply voltage	IP rating	description
LPM LB1	orange	24 VAC/DC	66/67/69K	monoblock LED pilot light
LPM LB3	green	24 VAC/DC	66/67/69K	monoblock LED pilot light
LPM LB4	red	24 VAC/DC	66/67/69K	monoblock LED pilot light
LPM LB5	yellow	24 VAC/DC	66/67/69K	monoblock LED pilot light
LPM LB6	blue	24 VAC/DC	66/67/69K	monoblock LED pilot light
LPM LB7	t/parent	24 VAC/DC	66/67/69K	monoblock LED pilot light
LPM LM1	orange	230 VAC	66/67/69K	monoblock LED pilot light
LPM LM3	green	230 VAC	66/67/69K	monoblock LED pilot light
LPM LM4	red	230 VAC	66/67/69K	monoblock LED pilot light
LPM LM5	yellow	230 VAC	66/67/69K	monoblock LED pilot light
LPM LM6	blue	230 VAC	66/67/69K	monoblock LED pilot light
LPM LM7	t/parent	230 VAC	66/67/69K	monoblock LED pilot light

Monoblock buzzer - continuous or pulse tone

LPC ZSA	black	9 - 15 VAC/DC	IP40	p/mount 90db/10 cm buzzer
LPC ZSB	black	18 - 30 VAC/DC	IP40	p/mount 90db/10 cm buzzer
LPC ZSM	black	185 - 265 VAC/DC	IP40	p/mount 90db/10 cm buzzer
LPC ZSAIP	black	9 - 15 VAC/DC	66/67/69K	p/mount 70db/10 cm buzzer
LPC ZSBIP	black	18 - 30 VAC/DC	66/67/69K	p/mount 70db/10 cm buzzer
LPC ZSMIP	black	185 - 265 VAC/DC	66/67/69K	p/mount 70db/10 cm buzzer



LPX LP...



LPX LF...



LPX LPSB...

new



LPX LPSM...



LPM LB3



LPM LB5



LPC ZSA



Accessories for Ø22 mm control devices

type	colour	description	
------	--------	-------------	--

Legend plates and labels for Ø22 mm actuators

For plastic series - in order to maintain the IP rating

LPX AU100	black	holder	legend holder for AU109 labels	12 mm (H)
LPX AU109	silver	engraveable	clip-in label for above holder	12 mm (H)
LPX AU109EN	silver	engraved	label (<i>provide required engraving</i>)	12 mm (H)
LPX AU105	black	holder	legend holder for AU108 labels	15 mm (H)
LPX AU108	silver	engraveable	clip-in label for above holder	15 mm (H)
LPX AU108EN	silver	engraved	label (<i>provide required engraving</i>)	15 mm (H)

Emergency labels (*to be mounted behind mushroom pushbuttons*)

LPX AU113	yellow	"emergency stop" plastic label/disc for pushbuttons	Ø90 mm
LPX AU115	yellow	"emergency stop" plastic label/disc for pushbuttons	Ø60 mm

Shrouds - to prevent inadvertent operation of pushbutton

LPX AU158	yellow	padlockable shroud for latching mushroom pushbutton
LPX AU159	yellow	half shroud to prevent inadvertent operation of pushbutton

Control device accessories

LPX A130	grey	Ø22 mm hole blanking plug (<i>threaded</i>)
LPX A140	black	action plug for using central position on actuators
LPX A150	black	spare rod (<i>150 mm</i>) for mechanical reset pushbuttons
LPX A170	silver (key No. 455)	spare (<i>key only</i>) replacement for key switches
LPX A170R*	silver	special (<i>key only</i>) for switches with different keys

* Add: 421E, 458A, 520E, 3131A, 3433E (*for different key requirement*)

LPX AU00	black	spare plastic threaded nut for actuator fixing plastic actuators
LPX AU01	silver	replacement ring (<i>steel</i>) with teeth to avoid turning when mounted
LM2T A161	black	reduction ring to mount Ø22 mm through Ø30 mm hole
LM2T A200	black	socket spanner for actuator fixing ring tightening

Rubber boots for flush pushbutton actuators

LPX AU132	black	boot	rubber protection boot for flush pushbutton actuators
LPX AU133	green	boot	rubber protection boot for flush pushbutton actuators
LPX AU134	red	boot	rubber protection boot for flush pushbutton actuators
LPX AU135	yellow	boot	rubber protection boot for flush pushbutton actuators
LPX AU136	blue	boot	rubber protection boot for flush pushbutton actuators
LPX AU137	t/parent	boot	rubber protection boot for flush pushbutton actuators
LPX AU157	t/parent	boot	rubber protection boot for double/triple p/button actuators

DIN rail mount adaptor for control devices

To mount Ø22 mm control devices on DIN rail fits into standard distribution boards (45 mm cut-out)

LPX DIN	grey	DIN rail mounting adaptor for Ø22 mm pushbuttons
---------	------	--



LPZ P1B502ZA



LPZ P2B801ZA



LPZ P3A8



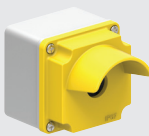
LPX CB01



LPX CB10



LPZ M1A5



LPZ M1A5P



LPZ M5A8



LPZ M4A8



LPZ M2A8



LPZ M6E8



Polycarbonate pushbutton control stations

IP66, IP67, IP69K

- New styling with incorporated anti-rotation facility for actuators
- M16 or M20/25 cable gland knock-outs on all sides and base
- Easy wiring with internal contact identification on cover and on base
- Contact blocks and lamp modules are base mounted with screw terminals facing forward

type	button colour	contact	cover colour	description	dimensions (mm) (H) (W) (D)		
------	---------------	---------	--------------	-------------	--------------------------------	--	--

Complete pushbutton stations

1 hole pushbutton stations

LPZ P1B801ZA	green	1 x NO	grey	flush pushbutton station	72	72	56
LPZ P1B802ZA	red	1 x NC	grey	extended pushbutton station	72	72	56
LPZ P1B501ZA	red	1 x NC	yellow	spring ret mushroom station	72	72	56
LPZ P1B502ZA	red	1 x NC	yellow	latch mushroom twist release	72	72	56

2 hole pushbutton stations

LPZ P2B801ZA	green	1 x NO	grey	flush pushbutton station	117	72	56
	red	1 x NC	grey	extended pushbutton station			

LPZ P2B802ZA*	green	1 x NO	grey	flush pushbutton	151	72	56
	red	1 x NC	grey	latch mushroom twist release			

*Taller housing (H) 151 mm to accommodate padlock shroud LPX AU158 (see page D-5)

3 hole pushbutton stations

LPZ P3B802ZA	green	1 x NO	grey	flush pushbutton	151	72	56
	red	1 x NC	grey	extended pushbutton			
	green	1 x NO	grey	flush pushbutton			

Empty enclosures (without actuators and contact blocks)

IP66, IP67, IP69K

type	holes	rows	cover	description	(H)	(W)	(D)
LPZ P1A5	1 hole	1	yellow	empty polycarb pushbutton station	72	72	56
LPZ P1A8	1 hole	1	grey	empty polycarb pushbutton station	72	72	56
LPZ P2A8	2 hole	1	grey	empty polycarb pushbutton station	117	72	56
LPZ P3A8	3 hole	1	grey	empty polycarb pushbutton station	151	72	56
LPZ P4A8	4 hole	1	grey	empty polycarb pushbutton station	186	72	56
LPZ P5A8	5 hole	1	grey	empty polycarb pushbutton station	220	72	56
LPZ P6A8	6 hole	1	grey	empty polycarb pushbutton station	256	72	56

Base mounting contact blocks and indicating modules for above stations

LPX CB10	green	1 x NO	base mount screw terminal contact block for above stations
LPX CB01	red	1 x NC	base mount screw terminal contact block for above stations

LPX LPBB*	* 12-30 VAC/DC	base mount LED integrated lamp module for above stations
LPX LPBM*	* 185-265 VAC	base mount LED integrated lamp module for above stations

* Replace with: 3 (green) / 4 (red) / 5 (yellow) / 6 (blue) / 8 (white) - for colours

Note: Base mounting contact blocks are not suitable for push on - push off actuators.

Metallic control stations (without actuators and contact blocks)

IP66, IP67

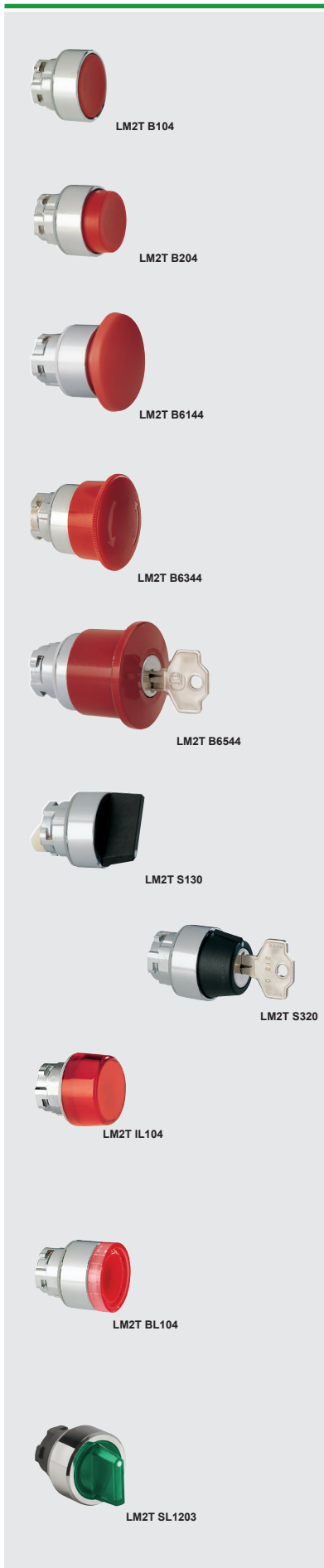
- Enclosures made of aluminium alloy suitable for pushbuttons, selector switches and pilot lights
- Cable entry Ø21 mm (for M20 or PG13.5 cable glands) - no cable entry for 8/12/16 way

LPZ M1A5	1 hole	1	yellow	industrial metal pushbutton station	80	80	73
LPZ M1A5P	1 hole	1	yellow	p/button station (with half shroud)	80	80	73
LPZ M1A8	1 hole	1	grey	industrial metal pushbutton station	80	80	73
LPZ M2A8	2 hole	1	grey	industrial metal pushbutton station	130	80	73
LPZ M3A8	3 hole	1	grey	industrial metal pushbutton station	170	80	73
LPZ M4A8	4 hole	1	grey	industrial metal pushbutton station	170	80	73
LPZ M5A8	5 hole	1	grey	industrial metal pushbutton station	230	80	73
LPZ M6A8	6 hole	1	grey	industrial metal pushbutton station	230	80	73
LPZ M8CA8	8 hole	2 x 4	grey	industrial metal pushbutton station	160	160	90
LPZ M12CA8	12 hole	3 x 4	grey	industrial metal pushbutton station	170	190	90
LPZ M16CA8	16 hole	4 x 4	grey	industrial metal pushbutton station	190	250	90

Empty metallic housings (without any holes)

IP66, IP67

LPZ M1E8	-	-	grey	empty aluminium alloy housing only	80	80	73
LPZ M2E8	-	-	grey	empty aluminium alloy housing only	130	80	73
LPZ M3E8	-	-	grey	empty aluminium alloy housing only	170	80	73
LPZ M5E8	-	-	grey	empty aluminium alloy housing only	160	160	90
LPZ M6E8	-	-	grey	empty aluminium alloy housing only	170	190	90
LPZ M7E8	-	-	grey	empty aluminium alloy housing only	190	250	90



Metallic series IP65 (contact block and support to be ordered separately)

type	colour	style	description		action
Pushbutton actuators					
LM2T B102	black	flush	momentary action pushbutton actuator		spring return
LM2T B103	green	flush	momentary action pushbutton actuator		spring return
LM2T B104	red	flush	momentary action pushbutton actuator		spring return
LM2T B105	yellow	flush	momentary action pushbutton actuator		spring return
LM2T B106	blue	flush	momentary action pushbutton actuator		spring return
LM2T B204	red	extended	momentary action pushbutton actuator		spring return
LM2T Q202*	black	extended	alternate action (<i>push on-push off</i>) actuator		alternate
LM2T Q203*	green	extended	alternate action (<i>push on-push off</i>) actuator		alternate
LM2T Q204*	red	extended	alternate action (<i>push on-push off</i>) actuator		alternate
LM2T Q205*	yellow	extended	alternate action (<i>push on-push off</i>) actuator		alternate
LM2T Q206*	blue	extended	alternate action (<i>push on-push off</i>) actuator		alternate
Mushroom head pushbutton actuators					
LM2T B6144	red	Ø40 mm	mushroom head pushbutton actuator		spring return
LM2T B6164	red	Ø60 mm	mushroom head pushbutton actuator		spring return
LM2T B6344	red	Ø40 mm	latching mushroom head p/button actuator		twist release
LM2T B6544	red	Ø40 mm	latching mushroom head p/button actuator		key release
Selector switch actuators					
					spring return
LM2T S120	black	2 position	O - I	selector switch actuator	-
LM2T S121	black	2 position	O - I	selector switch actuator	from R
LM2T S130	black	3 position	I - O - II	selector switch actuator	-
LM2T S131	black	3 position	I - O - II	selector switch actuator	from L+R
LM2T S133	black	3 position	I - O - II	selector switch actuator	from R
Key switch actuators					
			key release		spring return
LM2T S320	black	2 position	(O-I) Left	key switch actuator	-
LM2T S321	black	2 position	(O-I) L+R	key switch actuator	-
LM2T S340	black	2 position	(O-I) Left	key switch actuator	from Right
LM2T S330	black	3 position	(I-O-II) Centre	key switch actuator	-
LM2T S331	black	3 position	(I-O-II) L+C+R	key switch actuator	-
LM2T S370	black	3 position	(I-O-II) Centre	key switch actuator	from L+R
Illuminated control and signalling devices					
Pilot light head					
LM2T IL103	green	illuminated	pilot light head (<i>with diffuser</i>)		pilot light
LM2T IL104	red	illuminated	pilot light head (<i>with diffuser</i>)		pilot light
LM2T IL105	yellow	illuminated	pilot light head (<i>with diffuser</i>)		pilot light
LM2T IL106	blue	illuminated	pilot light head (<i>with diffuser</i>)		pilot light
LM2T IL107	t/parent	illuminated	pilot light head (<i>with diffuser</i>)		pilot light
Illuminated pushbuttons (<i>with side visibility</i>)					
LM2T BL103	green	extended	momentary action illuminated actuator		spring return
LM2T BL104	red	extended	momentary action illuminated actuator		spring return
LM2T BL105	yellow	extended	momentary action illuminated actuator		spring return
LM2T BL106	blue	extended	momentary action illuminated actuator		spring return
LM2T BL107	t/parent	extended	momentary action illuminated actuator		spring return
Illuminated alternate action pushbutton actuators (<i>push "ON" - push "OFF"</i>)					
LM2T QL203*	green	extended	alternate action illuminated actuator		alternate
LM2T QL204*	red	extended	alternate action illuminated actuator		alternate
LM2T QL205*	yellow	extended	alternate action illuminated actuator		alternate
LM2T QL206*	blue	extended	alternate action illuminated actuator		alternate
LM2T QL207*	t/parent	extended	alternate action illuminated actuator		alternate
Illuminated selector switch actuators					
LM2T SL1203	green	2 position	illuminated selector switch actuator		O - I
LM2T SL1204	red	2 position	illuminated selector switch actuator		O - I
LM2T SL1303	green	3 position	illuminated selector switch actuator		I - O - II

* Note: Only use contact block **LM2T C10A** or **LM2T C01**



LM2T AU120



LM2T C10



LM2T C01



LM2T LB...



LM2T AU113



LM2T J200



LM2T J400

Metallic series IP65 (contact block and support to be ordered separately)

type	colour	supply	description	for
------	--------	--------	-------------	-----

Contact elements and supports for metallic series control devices

Contact block support for metal series LM2T... only (can support up to 6 contact blocks)

LM2T AU120 – 3-way contact block support for metal series actuators LM2T...

Contact elements (screw terminal) - clip-on to LM2T AU120 support (above)

	contact				
LM2T C10	1 x NO	standard	green	contact block for control devices	LM2T...
LM2T C10A	1 x NO	early make	green	contact block for control devices	LM2T...
LM2T C01	1 x NC	standard	red	contact block for control devices	LM2T...
LM2T C01D	1 x NC	late break	red	contact block for control devices	LM2T...
LPX A140		action plug	black	using central pos. on actuators	LM2T...

Note: Only use **LM2T C10A** or **LM2T C01** for push on - push off actuators

LED integrated lamp holder (100.000 hour life)

LM2T LB3	green	12 - 30 VAC/DC	LED integrated steady lamp module	LM2T...
LM2T LB4	red	12 - 30 VAC/DC	LED integrated steady lamp module	LM2T...
LM2T LB5	yellow	12 - 30 VAC/DC	LED integrated steady lamp module	LM2T...
LM2T LB6	blue	12 - 30 VAC/DC	LED integrated steady lamp module	LM2T...
LM2T LB8	white	12 - 30 VAC/DC	LED integrated steady lamp module	LM2T...
LM2T LM3	green	185 - 265 VAC	LED integrated steady lamp module	LM2T...
LM2T LM4	red	185 - 265 VAC	LED integrated steady lamp module	LM2T...
LM2T LM5	yellow	185 - 265 VAC	LED integrated steady lamp module	LM2T...
LM2T LM6	blue	185 - 265 VAC	LED integrated steady lamp module	LM2T...
LM2T LM8	white	185 - 265 VAC	LED integrated steady lamp module	LM2T...

Legend plates and labels for Ø22 mm LM2T metallic actuators

For metallic series - in order to maintain the IP rating

LM2T AU100	black	holder	legend holder for LM2TAU206 labels	12 mm (H)
LM2T AU206	silver	engraveable	adhesive label insert for above holder	12 mm (H)
LM2T AU206EN	silver	engraved	label (provide required engraving)	12 mm (H)
34102/PS	black	holder	legend holder for LM2TAU108 labels	15 mm (H)
LM2T AU108	silver	engraveable	clip-in label insert for above holder	15 mm (H)
LM2T AU108EN	silver	engraved	label (provide required engraving)	15 mm (H)

Emergency labels (to be mounted behind mushroom pushbuttons)

LM2T AU113	yellow	"emergency stop" plastic label/disc for pushbuttons	Ø90 mm
LM2T AU115	yellow	"emergency stop" plastic label/disc for pushbuttons	Ø60 mm

Joystick controllers

type	contacts	direction	description	action
LM2T J200	2 NO	2	(up/down) joystick actuator	spring return
LM2T J201	2 NO	2	(up/down) joystick actuator	stay put
LM2T J400	4 NO	4	(up/down/left/right) joystick actuator	spring return
LM2T J401	4 NO	4	(up/down/left/right) joystick actuator	stay put

For above joystick controllers

LM2T AU101	black	2/4 direction	legend holder for joystick controllers	
LM2T AU206	silver	engraveable	adhesive label insert for above holder	12 mm (H)
LM2T AU206EN	silver	engraved	label (provide required engraving)	12 mm (H)



GX16...



GX32...U25



GX16 52U

new



GXM6

GX series - Rotary cam switches

type	poles	contact rating		description	action
		AC1 (A)	AC23A (kW at 400V)		
• 16A/20A switches (std. 48 x 48 mm), 32A/40A switches (std. 65 x 65 mm) front plate					
ON/OFF switches					
GX16 90U	1 pole	16 A	5.5 kW	on-off switch	(O-I)
GX16 91U	2 pole	16 A	5.5 kW	on-off switch	(O-I)
GX16 10U	3 pole	16 A	5.5 kW	on-off switch	(O-I)
GX16 92U	4 pole	16 A	5.5 kW	on-off switch	(O-I)
GX20 90U	1 pole	20 A	7.5 kW	on-off switch	(O-I)
GX20 91U	2 pole	20 A	7.5 kW	on-off switch	(O-I)
GX20 10U	3 pole	20 A	7.5 kW	on-off switch	(O-I)
GX20 92U	4 pole	20 A	7.5 kW	on-off switch	(O-I)
GX32 90U	1 pole	32 A	15 kW	on-off switch	(O-I)
GX32 91U	2 pole	32 A	15 kW	on-off switch	(O-I)
GX32 10U	3 pole	32 A	15 kW	on-off switch	(O-I)
GX32 92U	4 pole	32 A	15 kW	on-off switch	(O-I)
GX40 90U	1 pole	40 A	18.5 kW	on-off switch	(O-I)
GX40 91U	2 pole	40 A	18.5 kW	on-off switch	(O-I)
GX40 10U	3 pole	40 A	18.5 kW	on-off switch	(O-I)
GX40 92U	4 pole	40 A	18.5 kW	on-off switch	(O-I)
ON/OFF isolators with padlockable red/yellow operating handle					
GX16 10U25	3 pole	16A	5.5kW	main isolator	(O-I)
GX16 92U25	4 pole	16A	5.5kW	main isolator	(O-I)
GX32 10U25	3 pole	32A	15kW	main isolator	(O-I)
GX32 92U25	4 pole	32A	15kW	main isolator	(O-I)
Changeover switches with "OFF" position					
GX16 51U	1 pole	16 A	5.5 kW	changeover switch	(I-O-II)
GX16 52U	2 pole	16 A	5.5 kW	changeover switch	(I-O-II)
GX16 53U	3 pole	16 A	5.5 kW	changeover switch	(I-O-II)
GX16 75U	4 pole	16 A	5.5 kW	changeover switch	(I-O-II)
GX20 51U	1 pole	20 A	7.5 kW	changeover switch	(I-O-II)
GX20 52U	2 pole	20 A	7.5 kW	changeover switch	(I-O-II)
GX20 53U	3 pole	20 A	7.5 kW	changeover switch	(I-O-II)
GX20 75U	4 pole	20 A	7.5 kW	changeover switch	(I-O-II)
GX32 51U	1 pole	32 A	15 kW	changeover switch	(I-O-II)
GX32 52U	2 pole	32 A	15 kW	changeover switch	(I-O-II)
GX32 53U	3 pole	32 A	15 kW	changeover switch	(I-O-II)
GX32 75U	4 pole	32 A	15 kW	changeover switch	(I-O-II)
GX40 51U	1 pole	40 A	18.5 kW	changeover switch	(I-O-II)
GX40 52U	2 pole	40 A	18.5 kW	changeover switch	(I-O-II)
GX40 53U	3 pole	40 A	18.5 kW	changeover switch	(I-O-II)
GX40 75U	4 pole	40 A	18.5 kW	changeover switch	(I-O-II)
Changeover switches without "OFF" position					
GX16 54U	1 pole	16 A	5.5 kW	changeover switch	(I-II)
GX16 55U	2 pole	16 A	5.5 kW	changeover switch	(I-II)
GX16 56U	3 pole	16 A	5.5 kW	changeover switch	(I-II)
GX16 69U	4 pole	16 A	5.5 kW	changeover switch	(I-II)
GX20 54U	1 pole	20 A	7.5 kW	changeover switch	(I-II)
GX20 55U	2 pole	20 A	7.5 kW	changeover switch	(I-II)
GX20 56U	3 pole	20 A	7.5 kW	changeover switch	(I-II)
GX20 69U	4 pole	20 A	7.5 kW	changeover switch	(I-II)
GX32 54U	1 pole	32 A	15 kW	changeover switch	(I-II)
GX32 55U	2 pole	32 A	15 kW	changeover switch	(I-II)
GX32 56U	3 pole	32 A	15 kW	changeover switch	(I-II)
GX32 69U	4 pole	32 A	15 kW	changeover switch	(I-II)
Voltmeter selector switches					
GX16 67U	–	16 A		voltmeter selector switch	ph-ph + off
GX16 66U	–	16 A		voltmeter selector switch	ph-ph/ph-n + off
Ammeter selector switches					
GX16 97U	–	16 A		ammeter selector switch	direct reading
GX16 98U	–	16 A		ammeter selector switch	for 3 CT's
Accessories for GX series cam switches					
GXM5	48 x 60 mm			front plate with legend for GX switches	16/20A
GXM6	65 x 80 mm			front plate with legend for GX switches	32/40A



227603



227622



227636

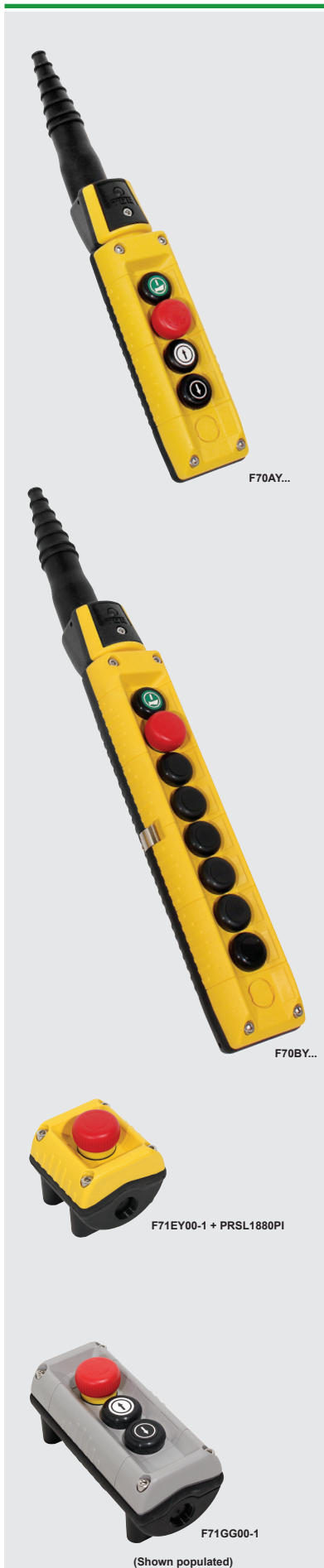


WE40

PR ONE series - Rotary cam switches

- 45° switching angle
- Forced opened contacts
- IP40 front protection, IP20 rear terminal (*finger protection*)
- Fulfills load break requirements up to 690V
- Operating temperature limits: -20°C to 70°C
- Front bezel: 48 mm □ - engraved aluminium plate with black handle
- Standards: IEC EN 60947-1, 60947-3, UL508, UL-CSA

type	contact rating AC-21 (AC-23 at 400V)		poles	description	action
ON-OFF switches					
227600	16A	7.5 kW	1 pole	on-off rotary cam switch	(O-I)
227601	16A	7.5 kW	2 pole	on-off rotary cam switch	(O-I)
227602	16A	7.5 kW	3 pole	on-off rotary cam switch	(O-I)
227603	25A	11 kW	1 pole	on-off rotary cam switch	(O-I)
227604	25A	11 kW	2 pole	on-off rotary cam switch	(O-I)
227605	25A	11 kW	3 pole	on-off rotary cam switch	(O-I)
227606	32A	11 kW	1 pole	on-off rotary cam switch	(O-I)
227608	32A	11 kW	3 pole	on-off rotary cam switch	(O-I)
Change-over switches (with "OFF" position)					
227609	16A	7.5 kW	1 pole	changeover rotary cam switch	(I-O-II)
227610	16A	7.5 kW	2 pole	changeover rotary cam switch	(I-O-II)
227611	16A	7.5 kW	3 pole	changeover rotary cam switch	(I-O-II)
227612	25A	11 kW	1 pole	changeover rotary cam switch	(I-O-II)
227613	25A	11 kW	2 pole	changeover rotary cam switch	(I-O-II)
227614	25A	11 kW	3 pole	changeover rotary cam switch	(I-O-II)
227615	32A	11 kW	1 pole	changeover rotary cam switch	(I-O-II)
227616	32A	11 kW	2 pole	changeover rotary cam switch	(I-O-II)
227617	32A	11 kW	3 pole	changeover rotary cam switch	(I-O-II)
2 to 5 way switches with (with "OFF" position)					
2-way switches with OFF					
227618	16A	7.5 kW	1 pole	2-contact rotary cam switch	(O-I-II)
227619	16A	7.5 kW	2 pole	4-contact rotary cam switch	(O-I-II)
227620	16A	7.5 kW	3 pole	6-contact rotary cam switch	(O-I-II)
227624	25A	11 kW	1 pole	2-contact rotary cam switch	(O-I-II)
227625	25A	11 kW	2 pole	4-contact rotary cam switch	(O-I-II)
227626	25A	11 kW	3 pole	6-contact rotary cam switch	(O-I-II)
227630	32A	11 kW	1 pole	2-contact rotary cam switch	(O-I-II)
227631	32A	11 kW	2 pole	4-contact rotary cam switch	(O-I-II)
227632	32A	11 kW	3 pole	6-contact rotary cam switch	(O-I-II)
3-way switches with OFF					
227621	16A	7.5 kW	1 pole	3-contact rotary cam switch	O-I-2-3
227627	25A	11 kW	1 pole	3-contact rotary cam switch	O-I-2-3
4-way switches with OFF					
227622	16A	7.5 kW	1 pole	4-contact rotary cam switch	O-I-2-3-4
5-way switches with OFF					
227623	16A	7.5 kW	1 pole	5-contact rotary cam switch	O-I-2-3-4-5
Binary code switches (Ideal for VSD panels up to 11 preset positions) (set point)					
N62338A	-	-	4 pole	binary cam switch	(0-3)
N13484A	-	-	4 pole	binary cam switch	(0-5)
NR56EQ10A	-	-	4 pole	binary cam switch	(0-7)
NR51UQ10A	-	-	4 pole	binary cam switch	(0-11)
Instrument switches					
Voltmeter switch, with neutral					
227636	16A	7.5 kW	1 pole	voltmeter selector switch (ph-ph/ph-N+off)	
Ammeter switch, 3 CTs with common point					
227637	16A	7.5 kW	1 pole	ammeter selector switch (for 3 CTs)	
Accessories for above cam switches					
WE40	□ 48 mm		aluminium	engraversable blank legend plate insert	
Q048	□ 48 mm		aluminium	engraversable duty label for legend	
IF9	-		aluminium	insert for above duty label	



MIKE series - Pendant control stations

MIKE pendant stations are designed for heavy duty applications. Rubber pushbuttons guarantee total protection from dust and liquid penetration, moulded two colour button discs offer permanent, clear symbols and text. The ergonomic design, compact dimensions with antislip grooves reduce fatigue improving ease of use under any working conditions. Wiring is improved by separating the actuators (*mounted on top cover*) from the contact blocks (*fixed to the base*) with the cable inlet.

- Weather resistant materials with guaranteed protection against penetration of water and dust
- Additional actuator with up to 3 contacts can be mounted to the pendant station (*front or bottom base*)
- Operational ambient temperature limits: -40°C - +80°C
- Protection degree: IP66 / IP67 / IP69K
- Mechanical life: 10x10⁶ operations
- Insulation category: Class II
- Conformity to standards: IEC/EN 60204-1, 60947-1, 60947-5-1/5, 60529, EN418, CSA-C22.2 No 14-13, UL 508

type	no. of ways	description	reset/ alarm 2NO	Mushroom E/stop 1NC	1 speed button 1NO	2 speed button 1NO+1NO
------	-------------	-------------	---------------------	------------------------	-----------------------	---------------------------

MIKE series single row pendant control station (IP66)

F70AY120200-2	4 way	pendant station	1	1	2	-
F70AY120002-2	4 way	pendant station	1	1	-	2
F70AY000400-1	4 way	pendant station	-	-	4	-
F70AY000202-5	4 way	pendant station	-	-	2	2
F70AY000004-1	4 way	pendant station	-	-	-	4
F70EY120400-1	6 way	pendant station	1	1	4	-
F70EY120004-1	6 way	pendant station	1	1	-	4
F70EY120202-2	6 way	pendant station	1	1	2	2
F70BY120600-2	8 way	pendant station	1	1	6	-
F70BY120006-2	8 way	pendant station	1	1	-	6
F70CY121000-2	12 way	pendant station	1	1	10	-
F70DY121200-2	14 way	pendant station	1	1	12	-

Extra charges on request, standard elements can be replaced by others (see below)

- 1/2 SPD double depression 2 speed button and contact instead of 1 speed
- 1/2 MSRM double depression 2 speed button and contact instead of mushroom + reset
- 1/1 MSRM single depression 1 speed button and contact instead of mushroom + reset

Accessories for MIKE pendants stations (above) (W) 84.5 x (D) 59.5 x (H) ↓ mm

F70AY00-1	4 way	black/yellow	empty pendant housing only	427
F70EY00-1	6 way	black/yellow	empty pendant housing only	487
F70BY00-1	8 way	black/yellow	empty pendant housing only	547
F70CY00-1	12 way	black/yellow	empty pendant housing only	667
F70DY00-1	14 way	black/yellow	empty pendant housing only	727

Also available in all black colour on request.

Victor series - Wall mounted control stations (empty housings)

Victor has been designed to facilitate wiring and maintenance. Contact blocks are installed in the base together with the cable inlet and are separated from the actuators installed on the cover, reducing time, cost of installation and maintenance down time.

- Protection degree: IP66/IP67/IP69K
- Operational ambient temp: -40°C - +80°C
- Insulation category: Class II
- Cable entry: cable clamp M20 x 1.5

type	holes	colour (top cover)	description	(W) 72.7 x (D) 61.9 x (H) ↓ mm
F71EY00-1	1 hole	yellow	empty surface mnt control station	73
F71EG00-1	1 hole	grey	empty surface mnt control station	73
F71FG00-1	2 hole	grey	empty surface mnt control station	122
F71GG00-1	3 hole	grey	empty surface mnt control station	152
F71HG00-1	4 hole	grey	empty surface mnt control station	182
F71IG00-1	6 hole	grey	empty surface mnt control station	242
F71JG00-1	8 hole	grey	empty surface mnt control station	302

Actuators - pushbuttons, selector switches on (page D-12) contact blocks (below)

Contact blocks for pendant and control stations (screw termination)

- Rated operational current 3A (AC15) / voltage 250V
- Thermal current: 10A
- NC contact blocks are of positive operating type

PRSL1800PI	1 NO	contact block	for above control stations
PRSL1801PI	1 NC	contact block	for above control stations
PRSL1820PI	LED	24/48 VAC/DC	LED indicating lamp element
PRSL1821PI	LED	110/230 VAC	LED indicating lamp element



type	colour return	positions remove	description	spring return	key remove
Actuators for MIKE and VICTOR pendant stations					
PRSL1811PI	black	-	pushbutton actuator (<i>no disc</i>)	1 speed	-
PRSL1810PI	black	-	pushbutton actuator (<i>no disc</i>)	2 speed	-
PRSL1880PI	red	-	latch mushroom actuator	twist rel	-
PRSL1890PI	red	-	latch mushroom actuator	key rel	-
PRSL1885ROC	red	-	impulse mushroom actuator	-	-
PRSL1840PI	red	-	pilot light head only	-	-
PRSL1841PI	green	-	pilot light head only	-	-
PRSL1842PI	yellow	-	pilot light head only	-	-
PRSL1846PI	blue	-	pilot light head only	-	-
PRSL1856BIC	blk/wht	2 (0-1)	selector switch actuator	-	-
PRSL1862BIC	blk/wht	2 (1-2)	selector switch actuator	-	-
PRSL1858BIC	blk/wht	3 (1-0-2)	selector switch actuator	-	-
PRSL1868PI	-	2 (0-1)	key switch actuator	-	0 pos
PRSL1870PI	-	3 (1-0-2)	key switch actuator	-	0 pos

Accessories for control stations		
PRSL1850PI	interlock	mechanical interlock between two pushbuttons for pendant stations
PRSL8512PI	spacer	pushbutton to contact block spacer (<i>required for single pushbuttons</i>)
PRSL8750PI	support	contact block support (<i>3 contacts</i>) for additional pushbutton
PRSL1830PI	cover	shallow protection cover for bottom mounted actuators
PRSL1831PI	cover	deep protection cover for bottom mounted actuators
PRTR1035PE	clip	stainless steel pendant case securing spring clip
PRSL0145PE	sleeve	spare rubber cable sleeve for Mike pendants Ø 14 - 26 mm
PRGA0012PE	hook	pendant hanging hook (<i>top or bottom mounting</i>)
PRET0215PE	label	label sheet with selection of pendant symbols
PRSL1845PI	black	blinking plug (<i>blind pushbutton</i>)

Colour discs with symbols for control station pushbuttons			
type	background colour	symbol	description
PRTA001MPI	green	start	symbol disc insert for control stations
PRTA002MPI	red	stop	symbol disc insert for control stations
PRTA003MPI	yellow	alarm	symbol disc insert for control stations
PRTA004MPI	green	start alarm	symbol disc insert for control stations
PRTA005MPI	white	arrow	symbol disc insert for control stations
PRTA006MPI	black	arrow	symbol disc insert for control stations
PRTA007MPI	white	arrow-fast	symbol disc insert for control stations
PRTA008MPI	black	arrow-fast	symbol disc insert for control stations
PRTA011MPI	white	arrow-2 spd	symbol disc insert for control stations
PRTA012MPI	black	arrow-2 spd	symbol disc insert for control stations
PRTA018MPI	black	spin left	symbol disc insert for control stations
PRTA019MPI	white	spin right	symbol disc insert for control stations
PRTA022MPI	black	spin left-fast	symbol disc insert for control stations
PRTA023MPI	white	spin right-fast	symbol disc insert for control stations
PRTA026MPI	black	spin left-2 spd	symbol disc insert for control stations
PRTA027MPI	white	spin right-2 spd	symbol disc insert for control stations
PRTA095MPI*	red	plain colour	symbol disc insert for control stations
* Replace the 5 with: 6-green / 7-yellow / 9-black			

Charlie pendant control stations (IP65) double row pistol grip pendant					
type	description	m/room 1NC	reset/ alarm 2NO	1 speed 1NO+1NO + common	2 speed 1NO+1NO 1NO+com
PF39020001	2 way pendant station	-	-	2	-
PF39020002	2 way pendant station	-	-	-	2
PF39030001	3 way pendant station	1	-	2	-
PF39030002	3 way pendant station	1	-	-	2

Spares and accessories for Charlie pendants		
PRSL1000PI	contact	1 x NO 1 NO single contact element
PRSL1001PI	contact	1 x NC 1 NC single contact element
PRSL1002PI	contact	1 speed 1 speed double interlocked contact element
PRSL1003PI	contact	2 speed 2 speed double interlocked contact element
PRSL1009PI	stop	E/stop mushroom (<i>latching - twist release</i>)

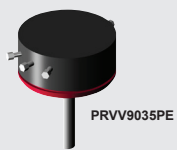
new



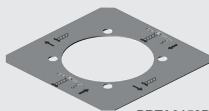
F661...



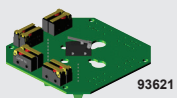
F662AL...



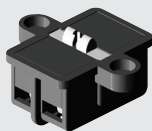
PRVV9035PE



PRTA0152PE



93621



PRSL0191PI

New **HERCULES** joystick controller, completely new design for applications in harsh environments. Attention to design, ergonomics, operation accuracy ensure reliability and extended mechanical life. Available with up to 5 speeds in each direction with cross or 360° movement.

- IP protection degree: IP65 (*enclosure dependant*)
- Ambient temperature: Operational -25°C/+70°C
- Mechanical life: 5 x 10⁶ operations
- Connections: Screw type terminals • Utilisation category: AC 15
- Conformity to standards: IEC/EN 60204-1, 60947-1, 60947-5-1, 61000-6-2/3

type	no. steps		movement			description
	↑ ↓	← →	360°	cross	mech. interlock	

Hercules - Version with micro switch-board (rated thermal current 8A)

- Standard version with switch board and mounted high reliability micro switches
- Knob type lever with **dead man safety** mechanically interlocked and 1CO contact
- Inductive loads: 1A 125 VAC, 0.5A 250 VAC, 1A 30 VDC
- Resistive loads: 3A 125 VAC, 2A 250 VAC, 3A 30 VDC

F661AC0110	1	0		x	x	industrial joystick controller
F661AL0111	1	1	x		x	industrial joystick controller
F661AC0220	2	0		x	x	industrial joystick controller
F661AL0222	2	2	x		x	industrial joystick controller
F661AC0330	3	0		x	x	industrial joystick controller
F661AL0331	3	1	x		x	industrial joystick controller
F661AL0332	3	2	x		x	industrial joystick controller
F661AL0333	3	3	x		x	industrial joystick controller
F661AC0440	4	0		x	x	industrial joystick controller
F661AL0441	4	1	x		x	industrial joystick controller
F661AL0442	4	2	x		x	industrial joystick controller
F661AL0443	4	3	x		x	industrial joystick controller
F661AL0444	4	4	x		x	industrial joystick controller
F661AC0550	5	0		x	x	industrial joystick controller
F661AC0551	5	1	x		x	industrial joystick controller
F661AC0552	5	2	x		x	industrial joystick controller
F661AL0553	5	3	x		x	industrial joystick controller
F661AL0555	5	5	x		x	industrial joystick controller

Hercules-CK - Version with independent switches (rated thermal current 10A)

- Knob type lever mechanically interlock and 2 x NC contacts
- Rated current: 3A 250 VAC

F662AC0220	2	0		x	x	industrial joystick controller
F662AL0333	3	3	x		x	industrial joystick controller
F662AL0444	4	4	x		x	industrial joystick controller
F662AL0551	5	1		x	x	industrial joystick controller
F662AL0555	5	5	x		x	industrial joystick controller

Accessories for Hercules joysticks (above)

PA66301	mount kit				for 1 potentiometer onto Hercules joystick controller
PA66302	mount kit				for 2 potentiometer onto Hercules joystick controller
PA66303	mount kit				for 1 potentiometer onto Hercules-CK joystick controller
PA66304	mount kit				for 2 potentiometer onto Hercules-CK joystick controller
PRVV9035PE	2.2	kΩ			Megatron potentiometer for joystick controller
PRVV9020PE	4.7	kΩ			Megatron potentiometer for joystick controller
PRVV9025PE	10	kΩ			Megatron potentiometer for joystick controller
PRTA0150PE	label	blank			label/legend plate for joystick controller
PRTA0151PE	label	"lifting-traverse"			label/legend plate for joystick controller
PRTA0152PE	label	"trolley-rotation"			label/legend plate for joystick controller

Spares for above Hercules joystick switches

93621	switch board	3 speed (8 switches)		for Hercules joystick controller
93625	switch board	5 speed (12 switches)		for Hercules joystick controller
PRSL4540PI	switch	2 x NC		for Hercules-CK joystick controller
PRSL4541PI	2 x switches	2 x NC		for Hercules-CK joystick controller
PRSL0191PI	switch	2 x NC		interlock for Hercules-CK joystick controller
PRGU6050PE	bellows			spare rubber bellows for Hercules joystick controller
PRSL9890PI	half guide			half cross guide for lever of joysticks (2 x required)

Stepless proportional joystick with built-in analog actuator (resolution: 10 bit)

- Supply voltage: 12 - 48 VAC/DC
- Proportional outputs: 2 x Current 4 - 20mA (or) 2 x Voltage 0 - 5 VDC
- Directional switches: 4 x directional switches

F661EC25555002	stepless				proportional output joystick controller
----------------	----------	--	--	--	---



PF34...



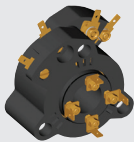
PRSL9873PI



PRTR0160PE



PF21270100



PF21270101



PF23...

Juliet - Small sized, compact joystick for control of industrial machinery. Controllers with different configurations are made up by using standard 3 or 5 step 4 direction units with lever guides which define final movement steps. Available with up to 5 speeds in each direction with cross or 360° movement.

- Ambient temperature: Operational -25°C to +70°C
- Mechanical life: 5x 10⁶ operations
- Utilisation category: AC 15
- Rated operational current: 2 A • Thermal current: 8A
- Rated operational voltage: 48 VAC
- Conformity to standards: EN 60204-1, 60947-1, 60947-5-1

type	no. steps		movement			description
	↕	↔	360°	cross	lever guide	

Juliet series - Joystick control switches IP65 (enclosure dependant)

PF34021004	1	0		x	9872PI	Juliet joystick controller
PF34021101	1	1	x		9871PI	Juliet joystick controller
PF34022004	2	0		x	9880PI	Juliet joystick controller
PF34022201	2	2	x		9876PI	Juliet joystick controller
PF34023004	3	0		x	9824PI	Juliet joystick controller
PF34023301	3	3	x		9826PI	Juliet joystick controller
PF34024004	4	0		x	9835PI	Juliet joystick controller
PF34023501	3	5	x		9842PI	Juliet joystick controller
PF34025501	5	5	x		9830PI	Juliet joystick controller

Replacement lever guides for other switching configurations

PRSL9873PI	2	1	lever guide	for Juliet joystick controllers
PRSL9838PI	3	1	lever guide	for Juliet joystick controllers
PRSL9841PI	3	2	lever guide	for Juliet joystick controllers
PRSL9844PI	4	1	lever guide	for Juliet joystick controllers
PRSL9845PI	4	3	lever guide	for Juliet joystick controllers
PRSL9849PI	4	4	lever guide	for Juliet joystick controllers
PRSL9839PI	5	1	lever guide	for Juliet joystick controllers
PRSL9828PI	5	2	lever guide	for Juliet joystick controllers
PRSL9825PI	5	4	lever guide	for Juliet joystick controllers

PRTR0160PE cross cross lever guide for Juliet joystick controllers

Spares for Juliet joystick controllers

93558	switch board	3 speed (8 switches)	for Juliet joystick controller
93547	switch board	5 speed (12 switches)	for Juliet joystick controller
PRSL0173PI	bellows	spare rubber bellows	for Juliet joystick controllers

Slip ring collectors Suitable for AC currents only

Slip ring collectors are sets of rings coupled with brushes designed to allow current to pass from a fixed to a rotating part. Used to supply crane motors and cable winders.

- Rated operational voltage: 400 V • Insulation voltage: 660 V
- Conformity to standards: EN 60204-1, EN60309-1, EN60529

type	current	No. of rings		description
		30A	10A	

10A series - Slip ring collectors 6.6 mm faston connections

PF21270100	10A	-	4	slip ring collector with driving slot
PF21270101	10A	-	4	slip ring collector without driving slot

30A series - Slip ring collectors (or combined with 10A auxiliary contacts)

The 30A slip ring collectors can be supplied with additional 10A auxiliary rings. Shock resistant thermoplastic protection preventing accidental contact of live parts.

PF2304B001	30A	4	-	30A line slip ring collector
PF2306B002	30A	6	-	30A line slip ring collector
PF2309B002	30A	9	-	30A line slip ring collector

Combined 30A and 10A auxiliary rings

PF2306B003	30A	4	2	combined 30/10A slip ring collector
PF2308B001	30A	4	4	combined 30/10A slip ring collector
PF2310B001	30A	4	6	combined 30/10A slip ring collector

Additional 30A rings (up to a max. of 20 rings) price per ring (on request only)
 Additional 10A rings (up to a max. of 40 rings) price per ring (on request only)

Larger sizes 50A - 300A - 500A available on request.



Rotary limit switches are used to control and measure movement of industrial machinery by reading the rotation angle and/or counting the number of revolutions of a shaft. They operate as an auxiliary controller for electric motors through a power interface. The switch shaft can be connected to a motor and after a preset number of revolutions the cams operate a switch.

Each cam can be set with a high accuracy due to precision cam adjusting screws.

- Utilisation category: AC 15
- Rated operational voltage: 250 V
- Operational temperature: -40°C/+80°C
- Rated current: 3A operational / 10A thermal
- Conformity to standards: EN 60204-1/35, 60947-1/5-1, 60529, CSA-C22.2 No 14-13, UL 508

type	ratio	no. micro's	description
Base series - Wormgear limit switches			
		1 x CO	<i>(H) 84.5 x (W) 70 x (D) 106 mm</i>

- Protection degree: IP42
- Mechanical life: 1x10⁶ operations
- Connections: Faston 6.3 mm

PFA9142A0015001	1:15	2	Base miniature wormgear limit switch
PFA9142A0025001	1:25	2	Base miniature wormgear limit switch
PFA9142A0050001	1:50	2	Base miniature wormgear limit switch
PFA9142A0075001	1:75	2	Base miniature wormgear limit switch
PFA9142A0103001	1:100	2	Base miniature wormgear limit switch
PFA9142A0158001	1:150	2	Base miniature wormgear limit switch

Fox / Oscar series - Wormgear limit switches			
		1NO + 1NC	

- Protection degree: IP66, IP67, IP69K
- Mechanical life: 10x10⁶ operations
- Connections: Screw-type terminals with self-raising clamps

Fox series - Wormgear limit switches			
			<i>(H) 117 x (W) 75 x (D) 141 mm</i>

PFB9067L0016010	1:15	2	Fox industrial wormgear limit switch
PFB9067L0027007	1:25	2	Fox industrial wormgear limit switch
PFB9067L0062033	1:50	2	Fox industrial wormgear limit switch
PFB9067L0103037	1:100	2	Fox industrial wormgear limit switch
PFB9067L0162007	1:150	2	Fox industrial wormgear limit switch
PFB9067L0222011	1:200	2	Fox industrial wormgear limit switch
PFB9067L0254019	1:250	2	Fox industrial wormgear limit switch

Cam set and switches can be replaced with a potentiometer or encoder (below) on Fox switches/

Oscar series - Wormgear limit switches			
			<i>(H) 134.5 x (W) 119 x (D) 146.5 mm</i>

Can be equipped with up to two cam sets (*up to 10 switches*) with potentiometers (*alone or on top of cam sets with up to 3 switches*) and Yankee absolute encoders (*on top of cam sets with up to 4 switches*)

PFC9067L0031032	1:25	2	Oscar industrial wormgear limit switch
PFC9067L0062004	1:50	2	Oscar industrial wormgear limit switch
PFC9067L0107014	1:100	2	Oscar industrial wormgear limit switch
PFC9067L0156004	1:150	2	Oscar industrial wormgear limit switch
PFC9067L0214004	1:200	2	Oscar industrial wormgear limit switch
PFC9067L0254004	1:250	2	Oscar industrial wormgear limit switch
PFC9067L0313023	1:300	2	Oscar industrial wormgear limit switch

Accessories for above Fox and Oscar switches

Standard cam set and switches			
FCL20001	cam set	2	std. cam set with switches for Fox/Oscar
FCL40003	cam set	4	std. cam set with switches for Fox/Oscar

Potentiometer			
PA020001	10	kΩ	potentiometer with support for Fox/Oscar

Incremental encoders			
PA030001	36	pulses/rev	4.5 - 30 VDC Encoder with support
PA030002	150	pulses/rev	4.5 - 30 VDC Encoder with support

Yankee Absolute encoders			
PA01AA01	current	4 - 20mA	12 - 48 VDC/AC Absolute Encoder
PA01AB01	voltage	0 - 10V	12 - 48 VDC/AC Absolute Encoder
PA01AC01	PWM	0 - 100%	12 - 48 VDC/AC Absolute Encoder

Mounting accessories for Base, Fox, Oscar limit switches

PRSL0356PI	flange	mounting flange + screws and pins for Base/Fox/Oscar	
PRSL0981PI	coupling	coupling with pin for Base/Fox/Oscar	
PRSL0920PI	coupling	female coupling with pin for Base/Fox/Oscar	
PRSL0919PI	coupling	male coupling with pin for Base/Fox/Oscar	

new



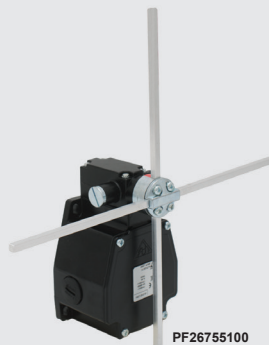
F201120001



F202210001



PF48...



PF26755100

Position limit switches

Cross position limit switches designed to control the movement of overhead travelling cranes, hoists and complex machine tools. Choice of materials and technical solutions adopted and heads with different types of rods and movements enable use in harsh operating conditions.

- Utilisation category: AC 15
- Rated operational voltage: 250V
- Insulation voltage: 500 VAC
- Conformity to Standards: EN 60421-1, EN 60947-1, EN60947-5-1, EN60529

type	actuators	positions	micro sw	description
------	-----------	-----------	----------	-------------

Arke series - Position limit switches IP65, IP66, IP67 Class II

- Particularly suitable for use in harsh operating conditions with extreme temperature resistance.
 - Cross rods with 4 maintained positions every 90° or single rod with 65° spring return movement.
 - Enclosure and head in thermoplastic material (*Nylon reinforced with fibreglass*)

- Thermal current: 10A
- Rated operational current: 6A
- Operating temperature: -40°C to +80°C
- Mechanical life: 5 x 10⁶ operations
- Cable entry: Bottom or side (L or R) (*supplied with M20 cable gland*)
- Supplied with: 2 x (6 x 8 mm) aluminium rods (200 mm)

• Positive opening NC contacts for safety functions

F201110001	X-rod	4 (<i>fixed</i>) 90°	2NC (<i>1 staggered</i>)	stop at 180°
F201120001	X-rod	4 (<i>fixed</i>) 90°	2NC (<i>1 staggered</i>)	free rotation
F201110002	X-rod	3 (<i>fixed</i>) 90°	1NO + 1NC	position limit switch
F202210001	rod-roller	spring ret 65°	1NO + 1NC	position limit switch

Tango series - Position limit switches IP65 Class II

3 Rods with 4 maintained positions every 60° with 1NC double break slow action switches

- Thermal current: 10A
- Rated operational current: 3A
- Operating temperature: -25°C to +70°C
- Mechanical life: 1 x 10⁶ operations
- Cable entry: Bottom (*supplied with M20 cable gland*)
- Supplied with: Three 6 x 6 mm aluminium rods (300 mm)

PF48020001	X-rod	4 (<i>fixed</i>) 60°	2NC	position limit switch
PF48030001	X-rod	4 (<i>fixed</i>) 60°	3NC	position limit switch
PF48040001	X-rod	4 (<i>fixed</i>) 60°	4NC	position limit switch

X-FSC series - Position limit switches IP65 Class II

Equipped with 2 x 1NO + 1NC snap action switches
 Enclosure and head in thermoplastic material (*Nylon reinforced with fibreglass*)

- Thermal current: 10A
- Rated operational current: 3A
- Operating temperature: -25°C to +70°C
- Mechanical life: 1 x 10⁶ operations

PF33710100	T-rod	3 (<i>fixed</i>) 90°	1NO+1NC	position limit switch
-------------------	-------	------------------------	---------	-----------------------

7551 series - Position limit switches IP65 Class I

Designed for the control of complex operating equipment. The choice of materials, technical solutions and ample dimensions make these switches ideal for use in strongly aggressive environments when exposed to severe operating conditions.
 Die-cast aluminium enclosure with Zama head to resist any violent impact

- Thermal current: 10A
- Rated operational current: 3A
- Operating temperature: -40°C to +70°C
- Mechanical life: 1 x 10⁶ operations

PF26755100	X-rod	4 (<i>fixed</i>) 90°	2 x 1NO+1NC	position limit switch
-------------------	-------	------------------------	-------------	-----------------------



P40 series - Panel mount Ø41 mm signalling devices - (mounts through Ø30 mm hole)

With multifunctional technology, permitting different selectable signalling levels via independent electric contacts.

- 4 bright LEDs, Ø41 mm domed lens 360° light diffusion with maximized frontal performance
- Mounts through Ø30 mm hole - screw terminals (*internal depth max. 37 mm*)

type	lens colour	dB @ 1m max	supply	description	dimensions (mm)	
					Ø	ext.

P40 S - Multifunctional LED signalling panel beacon (IP65)

3 alarm levels: Steady - flashing - strobe (*selectable via electrical contacts*)

91132	amber	-	12 - 24 VAC/DC	panel mnt signalling device	41	46
91133	red	-	12 - 24 VAC/DC	panel mnt signalling device	41	46
91134	green	-	12 - 24 VAC/DC	panel mnt signalling device	41	46
91152	amber	-	48 - 240 VAC	panel mnt signalling device	41	46
91153	red	-	48 - 240 VAC	panel mnt signalling device	41	46
91154	green	-	48 - 240 VAC	panel mnt signalling device	41	46

P40 A - Piezoelectric acoustic sounder - selectable continuous - intermittent sound

91177	grey	85dB	12 - 24 VAC/DC	panel mnt audible sounder	41	34
91179	grey	85dB	48 - 240 VAC	panel mnt audible sounder	41	34

P40 A LED - Combination sounder and signal beacon (IP65)

3 alarm levels : Flashing only / flashing + intermittent sound / steady light + continuous sound

91182	amber	85dB	12 - 24 VAC/DC	panel mnt sounder/beacon	41	34
91183	red	85dB	12 - 24 VAC/DC	panel mnt sounder/beacon	41	34
91202	amber	85dB	48 - 240 VAC	panel mnt sounder/beacon	41	34
91203	red	85dB	48 - 240 VAC	panel mnt sounder/beacon	41	34

OVOLUX LED - Multifunctional LED signalling beacon (IP66)

- 4 light effects: Steady - single - double - triple flash (*selectable via dip-switches*)
- Bright LEDs, Ø76 mm domed lens 360° light diffusion with maximized frontal performance
- "R" version panel mount - through 1/2" NPT (22 mm) hole with (*provided*) lock ring

38782	amber	-	12 - 24 VAC/DC	panel mount signalling device	76	69
38783	red	-	12 - 24 VAC/DC	panel mount signalling device	76	69
38784	green	-	12 - 24 VAC/DC	panel mount signalling device	76	69
38792	amber	-	90 - 240 VAC	panel mount signalling device	76	69
38793	red	-	90 - 240 VAC	panel mount signalling device	76	69
38794	green	-	90 - 240 VAC	panel mount signalling device	76	69

OVOLUX RGB - Multicolor steady light - LED beacon

- Multi-coloured: White, amber, red, yellow, green, magenta, blue (*7 colours in one beacon*)

30107	multi	-	12 - 24 VAC/DC	panel mount signalling device	76	69
30108	multi	-	90 - 240 VAC	panel mount signalling device	76	69

OVOLUX mounting accessories

27697	adaptor	for mounting Ovolux beacons onto a foot or wall mount base				
27762		surface mounting wall bracket for Ovolux (<i>requires 27697 adaptor</i>)				
27764		surface mount base with extended foot (100 mm) (<i>requires 27697 adaptor</i>)				

P50 series - Panel mount Ø50 mm LED signalling devices (IP68)

Multifunctional technology, permitting different selectable alarm levels via independent electric contacts. Illuminated dome (Ø50 mm) provides easy-to-see operator guidance and indication.

- Mounts through Ø22 mm standard pushbutton hole secured with (*provided*) locking ring
- 6 bright LEDs. Polycarbonate dome with 360° light-diffusion design
- M12 4 PIN connector (*See page K-27/28 for cable and connectors*)

P50 S - Multifunctional LED signalling panel beacon

- 7 different light effects (*steady, slow/fast flashing, double/triple flash, strobe, random flash*)

91362	amber	-	12 - 24 VAC/DC	panel mnt signalling device	50	26.5
91363	red	-	12 - 24 VAC/DC	panel mnt signalling device	50	26.5
91364	green	-	12 - 24 VAC/DC	panel mnt signalling device	50	26.5

P50 RGB - Multicolour LED panel beacon - Steady light with 7 different selectable colours

91378	multi	-	12 - 24 VAC/DC	multicoloured LED beacon	50	26.5
-------	-------	---	----------------	--------------------------	----	------

P50 A - Panel mount piezoelectric acoustic sounder

- 7 different types of alarm controllable via independent electric contacts.

91367	grey	88dB	12 - 24 VAC/DC	panel mnt audible sounder	50	27.5
-------	------	------	----------------	---------------------------	----	------

P50 A LED - Combination sounder and signal beacon

91382	amber	88dB	12 - 24 VAC/DC	panel mnt sounder/beacon	50	27.5
91383	red	88dB	12 - 24 VAC/DC	panel mnt sounder/beacon	50	27.5



38603



38654



38802



90063

LED luminous devices engineered for industrial applications and machinery

type	lens colour	dB @ 1m max	supply voltage	description	dimensions (mm)	
					Ø	ext.

MICROLAMP LED - Multifunctional LED signalling beacon (IP54)

- Multi-voltage: 12/24 VAC/DC (or) 90 - 240 VAC
- 2 light effects: Steady - flashing (*selectable via terminals*)
- Surface mount **M16** cable gland entry (*excluding gland*)

38602	amber	–	12 - 24 VAC/DC	surface mnt signalling device	86	90
38603	red	–	12 - 24 VAC/DC	surface mnt signalling device	86	90
38604	green	–	12 - 24 VAC/DC	surface mnt signalling device	86	90
38622	amber	–	90 - 240 VAC	surface mnt signalling device	86	90
38623	red	–	90 - 240 VAC	surface mnt signalling device	86	90
38624	green	–	90 - 240 VAC	surface mnt signalling device	86	90

MICROLAMP LED and ACOUSTIC - LED signalling beacon (IP30)

- 2 alarm levels: Continuous sound with steady light (or) intermittent sound with flashing light

38632	amber	72	12 - 24 VAC/DC	surface mnt signalling device	86	111
38633	red	72	12 - 24 VAC/DC	surface mnt signalling device	86	111
38634	green	72	12 - 24 VAC/DC	surface mnt signalling device	86	111
38652	amber	72	90 - 240 VAC	surface mnt signalling device	86	111
38653	red	72	90 - 240 VAC	surface mnt signalling device	86	111
38654	green	72	90 - 240 VAC	surface mnt signalling device	86	111

Other colours available on request.

OVOLUX LED - Multifunctional LED signalling beacon (IP65)

- Multi-voltage: 12/24 VAC/DC (or) 90 - 240 VAC
- 4 light effects: Steady - single flash - double flash - triple flash (*selectable via dip-switches*)
- "M" version surface mount **M16** cable gland entry (*gland supplied*)
- Bright LED with maximised performance (*CD_{max} 35*)

38802	amber	–	12 - 24 VAC/DC	panel mount signalling device	76	69
38803	red	–	12 - 24 VAC/DC	panel mount signalling device	76	69
38812	amber	–	90 - 240 VAC	panel mount signalling device	76	69
38813	red	–	90 - 240 VAC	panel mount signalling device	76	69

Other colours available on request.

ROTALLARM S LED - Multifunctional rotating beacon (IP65)

ROTALLARM LED features a powerful multi-voltage and multifunction SMD LED electronic circuit offering outstanding performances together with the highest life expectancy in today's market. The structure guarantees high impact and vibration resistance as well as a high IP grade

- 3 light effects - **Steady light**
Flashing
Rotating (*simulates traditional rotating beacon*)

- 32 x 5050 Bright LEDs for improved visibility
- PC/ABS base with self-extinguishing polycarbonate dome
- Base mount **M20** cable gland entry (*gland supplied*)

Rotallarm LED rotating beacons (H) 212 x Ø142 mm

90061	blue	–	12 - 24 VAC/DC	multifunctional LED beacon	142	212
90062	amber	–	12 - 24 VAC/DC	multifunctional LED beacon	142	212
90063	red	–	12 - 24 VAC/DC	multifunctional LED beacon	142	212
90064	green	–	12 - 24 VAC/DC	multifunctional LED beacon	142	212
90081	blue	–	90 - 240 VAC	multifunctional LED beacon	142	212
90082	amber	–	90 - 240 VAC	multifunctional LED beacon	142	212
90083	red	–	90 - 240 VAC	multifunctional LED beacon	142	212
90084	green	–	90 - 240 VAC	multifunctional LED beacon	142	212

72692 grey – wall mounting bracket for above Rotallarm beacon



MLINE - Multivoltage - Multifunction - Modular - Multichannel

MLINE is a unique flexible, modular concept permitting different audio and signalling devices to be combined with facilities to mount them in the most practical way.

Different Domes (*audio, visual or both*) can be mounted on any of six different **Bases** which determine the supply voltage of the unit - **12 - 24 VAC/DC or 120 - 240 VAC**

- **LED** technology - zero maintenance built-in LED guaranteeing up to 100.000 hours of productive life



Scan to watch video

DOMES - beacons or sounders or combinations of both - require a **Base** (*see overleaf*) to complete device

type	lens colour	dB @ 1m max	description	dimensions	
				Ø	H

XLFS - Low profile beacon multifunctional LED signalling (IP66, IP68K)

- 3 selectable light effects:**
- Steady light
 - Flashing (*single-flash*)
 - Strobe effect (*5 x flash*)

Directional - Fresnel lens - (for long distance signalisation)

90821	blue	-	multifunctional low profile LED beacon	92	42.5
90822	amber	-	multifunctional low profile LED beacon	92	42.5
90823	red	-	multifunctional low profile LED beacon	92	42.5
90824	green	-	multifunctional low profile LED beacon	92	42.5
90826	clear	-	multifunctional low profile LED beacon	92	42.5

Proximity - Opaline lens - (for close proximity signalisation)

90502	amber	-	multifunctional low profile LED beacon	92	42.5
90503	red	-	multifunctional low profile LED beacon	92	42.5
90504	green	-	multifunctional low profile LED beacon	92	42.5

FLRS - Tall beacon high optical performance LED signalling (IP66)

- 24 bright LEDs permit 3 selectable luminous effects

- 3 selectable light effects:**
- Steady light
 - Flashing (*triple flash strobe effect*)
 - Rotating light (*simulates traditional rotating beacon*)

90351	blue	-	multifunctional tall LED beacon	92	108
90352	amber	-	multifunctional tall LED beacon	92	108
90353	red	-	multifunctional tall LED beacon	92	108
90354	green	-	multifunctional tall LED beacon	92	108

SIR-E - Multi-functional electronic sounder (IP65)

- High acoustic performance - adjustable volume (75 - 105 dB)
- Multi-tone 64 different sounds available (*selectable via internal dip switches*)
- 2 separate functions: pre-alarm - alarm (*controllable via separate electric contacts*)

90360	grey	105 dB	multifunction sounder (<i>64 sounds</i>)	92	62
90358	red	105 dB	multifunction sounder (<i>64 sounds</i>)	92	62

SIR-E LED S - Combination beacon and sounder (IP65)

- 3 separate functions: alert - pre-alarm - alarm (*selectable via independent electric contacts*)
- Multi-tone 64 different sounds available (*selectable via internal dip switches*)

90362	amber	105 dB	beacon and sounder (<i>64 sounds</i>)	92	62
90363	red	105 dB	beacon and sounder (<i>64 sounds</i>)	92	62

SIR-E LED MAX - Combination beacon and power sounder

90563	red	115 dB	beacon and sounder (<i>64 sounds</i>)	92	88
-------	-----	--------	---	----	----

SIR-E LED JUNIOR - Econo combination beacon/sounder

- 2 lighting effects: Steady - flashing

90402	amber	100 dB	beacon and sounder (<i>16 sounds</i>)	92	62
90403	red	100 dB	beacon and sounder (<i>16 sounds</i>)	92	62
90404	green	100 dB	beacon and sounder (<i>16 sounds</i>)	92	62



MLINE - Multi-voltage - Multifunction - Modular - Multichannel

BASES - for **MLINE** beacons or sounders or combinations of both, provide a number of mounting options. on any of six different **BASES** which determine the supply voltage of the unit **12 - 24 VAC/DC** or **120 - 240 VAC**

type	base		supply voltage	description	dimensions (mm)	
	colour				Ø	height
SHALLOW compact low profile surface mount bottom cable entry						
90367	grey	LT	12 - 24 VAC/DC	shallow base for MLine domes	92	21
90343	red	LT	12 - 24 VAC/DC	shallow base for MLine domes	92	21
DEEP surface mount base with 2 x M20 side knockouts and compression glands						
90368	grey	LT	12 - 24 VAC/DC	deep base for MLine domes	92	46
90345	red	LT	12 - 24 VAC/DC	deep base for MLine domes	92	46
90369	grey	HT	120 - 240 VAC/DC	deep base for MLine domes	92	46
90827*	grey	HT	120 - 240 VAC/DC	deep base for MLine domes	92	46
WALL lateral wall mount base with 2 x M20 knockouts						
90370	grey	LT	12 - 24 VAC/DC	wall base for MLine domes	115	61
90347	red	LT	12 - 24 VAC/DC	wall base for MLine domes	115	61
90371	grey	HT	120 - 240 VAC/DC	wall base for MLine domes	115	61
90828*	grey	HT	120 - 240 VAC/DC	wall base for MLine domes	115	61
POLE pole mount base for 1" or 1/2" NPT threaded pole						
90610	grey	LT	12 - 24 VAC/DC	pole mnt base for MLine domes	92	66
90612	grey	HT	120 - 240 VAC/DC	pole mnt base for MLine domes	92	66
90623*	grey	HT	120 - 240 VAC/DC	pole mnt base for MLine domes	92	66
FLUSH flush mount base for applications requiring low visual, discrete aesthetics						
90375	white	LT	12 - 24 VAC/DC	flush base for MLine domes	146	71
90376	white	HT	120 - 240 VAC/DC	flush base for MLine domes	146	71
DOUBLE wall mount base accommodates 2 x warning and/or signalling devices						
90372	grey	LT	12 - 24 VAC/DC	double base for MLine domes	120	97
90373	red	LT	12 - 24 VAC/DC	double base for MLine domes	120	97
90512	grey	HT	120 - 240 VAC/DC	double base for MLine domes	120	97

* Junior economical base only permits one function to be selected

Stainless steel protection grids (heavy duty) for MLINE beacons and sounders

type	size	SHALLOW Base		DEEP Base	
		12 - 24 VAC/DC		12 - 24 VAC/DC ; 120 - 240 VAC/DC	
90557	size 0 for	XLF S		-	
90551	size 1 for	SIR-E / SIR-E LED		XLF S	
90552	size 2 for	SIR-E MAX/ SIR-E LED MAX		SIR-E / SIR-E LED	
90553	size 3 for	FLR / SLR		SIR-E MAX/ SIR-E LED MAX	
90554	size 4 for	-		FLR S / SLR S	



69786



69788



28241



28242



28246



36901



36900

TLINE LED series - Industrial traffic lights

TLINE traffic lights (*based on MLINE philosophy*) provide reliable signalling and versatile solutions for parking and access control. LED technology offers much longer product life and the self-extinguishing polycarbonate body guarantees high impact resistance suitable for indoor or outdoor applications.

- 3 luminous effects: steady light, flashing light, strobe effect (*controllable via separate contacts*)

type	body	supply	colours	description
------	------	--------	---------	-------------

TLINE LED series - Industrial traffic lights (IP66)

TLINE 2 XLF 2 light - traffic signal (green/red) (H) 231 x (W) 120 x (D) 133 mm

69786	grey	12 - 24 VAC/DC	red/green	2 way industrial LED traffic light
69787	grey	120 - 240 VAC/DC	red/green	2 way industrial LED traffic light

TLINE 3 XLF 3 light - traffic signal (green/amber/red) (H) 342 x (W) 120 x (D) 133 mm

69788	grey	12 - 24 VAC/DC	red/amber/green	3 way industrial LED traffic light
69789	grey	120 - 240 VAC/DC	red/amber/green	3 way industrial LED traffic light

Accessories for above traffic lights

69784	silver	wall bracket	swivel type wall mount bracket for TLINE traffic lights	
69785	1/2"	NPT adaptor	adaptor (<i>required for pole mounting of traffic light</i>)	
27765	grey	pole mount	base with stainless steel pole	(L) 424 mm
27766	grey	pole mount	base with stainless steel pole	(L) 1240 mm

E-LITE LED series - Economic steady light beacon Ø70 mm (IP66)

Basic economical signal light with LED steady light indication. Opaline dome is illuminated in the colour of internal LED's.

- Opaline (*no colour dome*)
- M12 - 4pin plug connection
- Mounting: 3 hole in-base (*excluding screws*)
- Integrated mounting base (*3 mounting holes 120°*)
- Integrated LED steady light modules (*other luminous effects via PLC*)

28241	grey	24 VDC	blue	econo LED steady signal light
28242	grey	24 VDC	amber	econo LED steady signal light
28243	grey	24 VDC	red	econo LED steady signal light
28244	grey	24 VDC	green	econo LED steady signal light
28246	grey	24 VDC	clear	econo LED steady signal light

Accessories for above E-LITE

type	gender	pins	term.	plug angle	nominal current	voltage AC/DC	description
120104-02-022	female	4	screw	straight	4A	250V	M12 connector
120104-02-024	female	4	screw	90°	4A	250V	M12 connector
				colour	cable length		
120104-06-053	female	4	black	straight	2 met.	250V.	M12 sensor cable
120104-06-061	female	4	black	straight	5 met.	250V	M12 sensor cable
120104-06-017	female	4	black	90°	2 met.	250V	M12 sensor cable
120104-06-010	female	4	black	90°	5 met.	250V	M12 sensor cable

For more connectors with cable see page K-27-28

EOS series - Modular pre-assembled stacklight Ø70 mm (IP66, IP69K)

Basic economical stacklight in versions with 2 or 3 steady light modules. Offers virtually zero maintenance thanks to built-in LED technology guaranteeing up to 100.000 hours of product life.

- Integrated LED steady light modules (*other luminous effects via PLC*)
- Opaline clear lens with coloured light source permits perfect light distribution over 360°

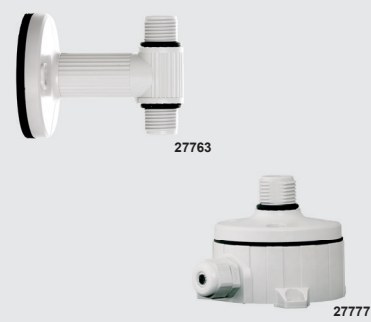
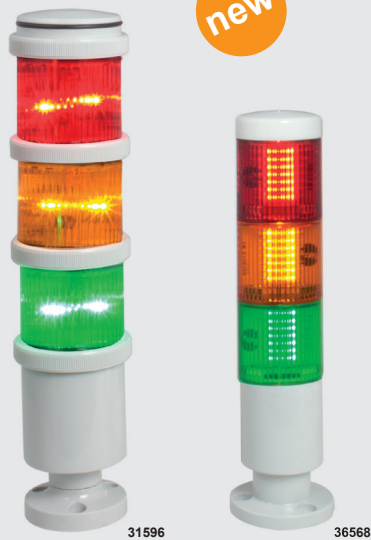
type	body	supply	colours	description
------	------	--------	---------	-------------

2 module stacklight (green/red) Ø70 x 208 mm

36901	grey	24 VDC	green/red	econo LED steady light stacklight
-------	------	--------	-----------	-----------------------------------

3 module stacklight (green/amber/red) Ø70 x 248 mm

36900	grey	24 VDC	green/amber/red	econo LED steady light stacklight
-------	------	--------	-----------------	-----------------------------------



Signal Towers / Stacklights (LED)

Up to 5 light modules or 4 light modules plus 1 x acoustic module can be combined with various colours permitting a number of signalling functions with multiple installation mounting options.

type	colour	dB @ 1m max	supply voltage	description
------	--------	-------------	----------------	-------------

TWS SMD LED series - Signal towers Ø70 mm (IP66)

- Low power consumption, high vibration resistance, 100.000 hour lifetime
- Multi-functionality, excellent optical definition, improved light output (12 LED'S)

TWS BASE - Wiring base + top cover for TWS towers (H) 48 mm

27700*	grey	-		wiring base + top cover for TWS towers
--------	------	---	--	--

* Essential for assembly of TWS tower

TWS LED MULTI - integrated LED light module (H) 59 mm

- 4 light functions (selectable by dip switch on each module)
steady - single flash - double flash - triple flash

36501	blue	-	24 VAC/DC	multi-functional LED light module
36502	amber	-	24 VAC/DC	multi-functional LED light module
36503	red	-	24 VAC/DC	multi-functional LED light module
36504	green	-	24 VAC/DC	multi-functional LED light module
36505	yellow	-	24 VAC/DC	multi-functional LED light module
36506	white	-	24 VAC/DC	multi-functional LED light module
36521	blue	-	240 VAC	multi-functional LED light module
36522	amber	-	240 VAC	multi-functional LED light module
36523	red	-	240 VAC	multi-functional LED light module
36524	green	-	240 VAC	multi-functional LED light module
36525	yellow	-	240 VAC	multi-functional LED light module
36526	white	-	240 VAC	multi-functional LED light module

Acoustic module for above TWS towers (IP54) (H) 104 mm

TWS PZO - Piezoelectric sounder (6 tones selectable via internal dip-switch)

27718	grey	85 dB	12 - 48 VAC/DC	acoustic module (6 sounds)
27719	grey	85 dB	110 - 240 VAC	acoustic module (6 sounds)

TWS MDA - magnetodynamic sounder (32 tones selectable via internal dip-switch)

27790	grey	105 dB	12 - 24 VAC/DC	acoustic module (32 sounds)
27793	grey	105 dB	240 VAC	acoustic module (32 sounds)

miniTWS LED series - Signal towers Ø50 mm IP66 (IP54 with sounder)

- Pre-assembled ready to install stacklights in 2 or 3 modules
- Low power consumption, high vibration resistance, 100.000 hour lifetime
- Multi-functionality two light effects: steady, flashing

Two light stacklight (green/red) (H) 221 mm

31594	grn/red	-	24 VAC/DC	LED signal tower complete
31595	grn/red	77 dB	24 VAC/DC	LED signal tower + acoustic sounder

Three light stacklight (green/amber/red) (H) 271 mm

31596	grn/amb/red	-	24 VAC/DC	LED signal tower complete
31597	grn/amb/red	77 dB	24 VAC/DC	LED signal tower + acoustic sounder

babyTWS LED series - Signal towers Ø36 mm IP65 (IP54 with sounder)

- Pre-assembled ready to install stacklights in 2 or 3 modules
- Low power consumption, high vibration resistance, 100.000 hour lifetime
- Multi-functionality, excellent optical definition

Two light stacklight (green/red) (H) 142 mm

36566	grn/red	-	24 VAC/DC	LED signal tower complete
36567	grn/red	72 dB	24 VAC/DC	LED signal tower + acoustic sounder

Three light stacklight (green/amber/red) (H) 176 mm

36568	grn/amb/red	-	24 VAC/DC	LED signal tower complete
36569	grn/amb/red	72 dB	24 VAC/DC	LED signal tower + acoustic sounder

Accessories for TWS, miniTWS and babyTWS towers

27760	mount			mounting foot for TWS (Ø88 mm)
27761	ext. post			100 mm extension stem for TWS towers
27762	bracket			wall mounting bracket for TWS towers
27763	double			wall mount bracket (double entry) for TWS towers
27777	-			mounting foot with junction box for TWS towers



ELYPS signal tower/stacklight system features modules which plug-in to each other to form specific functions, unique **oval shape (50 - 70 mm)** diameter variance depending on the viewing angle. Latest generation LED technology for highly effective indication with exceptional life. (+100.000 hours)

- Supply voltage 12/24 VDC or 120 – 240 VAC/DC (*determined by the wiring module*)
- IP65 protection (*suitable for indoor or outdoor use*)
- Light modules configurable for "steady" or various modes of "flashing"

Modular stacklights - made up from four groups of modules

- Mounting base - Wiring module - Light modules - Acoustic modules

type	colour	supply voltage	mode	description
------	--------	----------------	------	-------------

ELYPS WM Wiring modules *for all common wiring (determines supply voltage)*

- Permits connection of up to 7 modules - steady, flashing or sound
- Supply voltage of the system is determined by the Wiring module

LT	12 - 24 VDC	modules (<i>direct connected</i>)
HT	120 - 240 VAC/DC	modules (<i>with built-in 12/24V transformer</i>)

WM wiring module - *basic type without built-in flashing facility (includes top cover)*

32457	grey	LT	12 - 24 VAC/DC	steady	standard wiring module/base
32320	grey	HT	120 - 240 VAC	steady	standard wiring module/base

WM MULTI wiring module - *with built-in flashing facility (includes top cover)*

- Multi-functional flashing facility of each connected independent light module
- Configurable for "steady" or Single flash - Double flash - Triple flash - Strobe mode

32467	grey	LT	12 - 24 VAC/DC	flashing	multi LT wiring module/base
32326	grey	HT	120 - 240 VAC	flashing	multi LT wiring module/base

ELYPS Light modules *steady light or individual selectable flashing*

LM light module - economic, entry level LED light module with steady light

32331	blue	WM LT wiring module (24V ACDC only)	steady	plug-in steady light module
32332	amber		steady	plug-in steady light module
32333	red		steady	plug-in steady light module
32334	green		steady	plug-in steady light module
32335	yellow		steady	plug-in steady light module
32336	white		steady	plug-in steady light module

LM S - MULTI light modules - multifunctional 4 selectable light effects (*via dip-switches*)

- 2x FLASH - 3x FLASH - 5x FLASH - RANDOM (*uneven flashing pattern*)

32391	blue	according to selected wiring module	flashing	plug-in multi light module
32392	amber		flashing	plug-in multi light module
32393	red		flashing	plug-in multi light module
32394	green		flashing	plug-in multi light module
32395	yellow		flashing	plug-in multi light module
32396	white		flashing	plug-in multi light module

LM X - MULTI light modules - superbright multi-functional LED light module

- With superbright LED simulating traditional Xenon discharge lamps

32351	blue	according to selected wiring module	flashing	plug-in super brite light module
32352	amber		flashing	plug-in super brite light module
32353	red		flashing	plug-in super brite light module
32354	green		flashing	plug-in super brite light module
32355	yellow		flashing	plug-in super brite light module
32356	white		flashing	plug-in super brite light module

ELYPS Acoustic modules *to add acoustic signalisation to luminous sectors*

AM series Piezoelectric- 2 sound modes (*intermittent or continuous*)

32337	grey	acc. to wiring module	87 dB	plug-in acoustic module
-------	------	-----------------------	-------	-------------------------

AM S series Magnetodynamic - 16 different sounds modes - adjustable volume 60 - 90 dB

32347	grey	acc. to wiring module	90 dB	plug-in acoustic module
-------	------	-----------------------	-------	-------------------------

Mounting bases for signal towers

32357	grey	foot mounting base	for ELYPS signal towers
32377	grey	foot mount base with 10 cm ext.	for ELYPS signal towers
32367	grey	wall mounting base	for ELYPS signal towers
32387	grey	pole mounting base	for ELYPS signal towers



Industrial motor driven sirens

type	supply voltage	dB @ 1m	description	IP	run duration on	run duration off	dimensions (Ø) (H)
------	----------------	---------	-------------	----	-----------------	------------------	--------------------

MICRO W10 series - Motor driven sirens

Ideal choice for industrial applications, from general-purpose signalization to warning.

- Can be installed vertically or horizontally

42200	12 VDC	93	motor driven siren	IP42	(continuous)		84 80
42202	24 VDC	93	motor driven siren	IP42	(continuous)		84 80
42212	240 VAC	93	motor driven siren	IP42	(continuous)		90 129

CELERE series - Motor driven sirens

- Self-extinguishing PC body with high impact resistance
- Motor protection thermal circuit breaker installed on CELERE and superCELERE versions.
- Easy installation by means of the integrated fixing bracket - **M12** cable gland

mini-CELERE miniature electro-mechanical siren (300m)

42006	12 VDC	101	motor driven siren	IP43	(continuous)		91 115
42001	24 VAC/DC	101	motor driven siren	IP43	1 min. 10 min.		91 115
42005	240 VAC/DC	101	motor driven siren	IP43	1 min. 10 min.		91 115

CELERE mid sized electro-mechanical siren (500m)

42026	12 VDC	110	motor driven siren	IP43	(continuous)		118 167
42021	24 VAC/DC	110	motor driven siren	IP43	1 min. 10 min.		118 167
42025	240 VAC/DC	110	motor driven siren	IP43	1 min. 10 min.		118 167

super-CELERE large size electro-mechanical siren (1000m)

42046	12 VDC	114	motor driven siren	IP43	(continuous)		140 186
42047	24 VAC/DC	114	motor driven siren	IP43	(continuous)		140 186
42045	240 VAC/DC	114	motor driven siren	IP43	1 min. 10 min.		140 186

Electronic sirens

SE4/29 series - Modular base mount sirens

- Adjustable volume regulation and sound progression regulation
- 5 selectable sound tones
 - Continuous 1000 Hz
 - Bi-tone 600/700 Hz
 - Multi-tone 1000-1700 Hz
 - Modulated 1000-1700 Hz
 - Two-tone 440/560 Hz *for evacuation*

50415	12 - 24 VAC/DC	97	electronic siren	IP30	(selectable)		100 90
50418	240 VAC	97	electronic siren	IP30	(selectable)		100 90

SE12 series - Electronic sirens (hinged mounting bracket)

- Adjustable volume regulation and sound progression regulation
- 32 different tones (selectable via dip-switches) frequency ranges 300/2850 Hz

50424	12 - 24 VAC/DC	114	electronic siren	IP43	(selectable)		102 108
50427	240 VAC	113	electronic siren	IP43	(selectable)		130 108

SIR-TOUCH - Electronic siren super loud 120dB (IP68, IP69K)

- Unique touch programming
- 120 dB super load siren (6 programmable volume levels)
- 64 different programmable sounds
- **M12** plug-in termination
- Available with built-in LED light

SIR-TOUCH Siren only

90750	24 VDC	120	electronic siren	IP68	(selectable)		180 207
90751	85 - 265 VAC	120	electronic siren	IP68	(selectable)		180 207

SIR-TOUCH LED Siren and LED beacon (programmable for steady light, flashing light or off)

90752	24 VDC	120	electronic siren	IP68	(selectable)		180 207
90753	85 - 265 VAC	120	electronic siren	IP68	(selectable)		180 207

Accessories for SIR-TOUCH siren

90754	mount						swivel wall mount bracket for above siren
90755	mount		SE 12				swivel base mount bracket for above siren
120104-06-053	4 Pin female						M12 PUR cable for SIR-TOUCH termination 2 meter
120104-06-061	4 Pin female						M12 PUR cable for SIR-TOUCH termination 5 meter



Signal beacons Ø62 mm

Signal beacons are fundamental elements for visual and audible signalling of system status in manufacturing processes.

- IP30 with base
- IP54 without base
- Bases for various mounting solutions are supplied separately

type	colour	voltage	description
------	--------	---------	-------------

Steady light modules BA15d fitting, direct supply (lamp not included) Ø62 mm

LB6EL* * 24V AC/DC or 230VAC direct supply steady light module

Blinking or steady light modules BA15d fitting (lamp not supplied)

LB6GLB* * 12 - 48 VAC/DC blinking light module (no lamp)

LB6GLM* * 24 - 230 VAC blinking light module (no lamp)

* Replace with: 1= orange / 3= green / 4= red / 5= yellow / 6= blue / 8= white

Bases for above signal beacons

LB6BP03 horizontal surface mount base

LB6BP05 through hole mounting Ø22 mm with locknut

LB6BP07 for extended tube connection

Signal towers Ø70 mm (IP65)

Signal towers can be assembled by stacking up to seven modules of:

1. Up to 7 light modules (steady or blinking) less one, if a sound module is required
2. Add connection module for terminating
3. Add mounting accessories if required

- Light modules: steady light / blinking light
- Sound modules: continuous or pulsed sound

Steady light modules standard BA15d lamp filament or LED (not included)

LT7EL* * 12 - 260 VAC/DC steady light stackable module

Blinking light modules standard BA15d lamp filament or LED (not included)

LT7GLB* * 24 VAC/DC blinking light module (no lamp)

LT7GLM* * 230 VAC blinking light module (no lamp)

* Replace with: 1= orange / 3= green / 4= red / 5= yellow / 6= blue / 8= white

Sound modules (pulsed or continuous)

LT7S2B – 24 VAC/DC pulsed or continuous IP65

LT7S2M – 230 VAC pulsed or continuous IP65

Connection modules (complete with cover)

LT7CP01 black bottom entry connection module (for plastic tubes)

Accessories for beacons and signal towers (above)

LT7BP01 horizontal surface mount base with tube extension

LT7BP02 vertical wall mount base with tube extension

LT7TP0100 100 mm extension tube for base (stackable sections)

Super bright LED signal lamps BA15d (360° illumination) up to 25 000 hours

type	colour	voltage	description
LT7ALLB4	red	24 VAC/DC	BA15d LED lamp for towers
LT7ALLB3	green	24 VAC/DC	BA15d LED lamp for towers
LT7ALLB5	amber	24 VAC/DC	BA15d LED lamp for towers
LT7ALLB6	blue	24 VAC/DC	BA15d LED lamp for towers
LT7ALLB8	white	24 VAC/DC	BA15d LED lamp for towers
LT7ALLM4	red	230 VAC	BA15d LED lamp for towers
LT7ALLM3	green	230 VAC	BA15d LED lamp for towers
LT7ALLM5	amber	230 VAC	BA15d LED lamp for towers
LT7ALLM6	blue	230 VAC	BA15d LED lamp for towers
LT7ALLM8	white	230 VAC	BA15d LED lamp for towers



AD16-16DSR02



AD16-16DSY22



AD16-16DSG22



AD16-16MR22



AD22-22DSR01



AD22-22DSG02



AD22-22DSB38



AD22-22DRG11

LED pilot lights (multi-chip)

- Super bright multi-chip LED pilot lights (with diffuser/legend insert)
- Shock resistant, low power consumption $\leq 20\text{mA}$
- Long life ≥ 30.000 hrs

type	lens colour	voltage $\pm 20\%$	mounting hole \varnothing	description
Ø16 mm LED pilot lights (high brightness)				<i>Lens: Ø19 x 10 - Body: L 24 mm</i>
• (IP63) (IP20 terminal protection)				
AD16-16DSR02	red	24 VAC/DC	Ø16 mm	panel mount LED pilot light
AD16-16DSG02	green	24 VAC/DC	Ø16 mm	panel mount LED pilot light
AD16-16DSY02	yellow	24 VAC/DC	Ø16 mm	panel mount LED pilot light
AD16-16DSB02	blue	24 VAC/DC	Ø16 mm	panel mount LED pilot light
AD16-16DSW02	white	24 VAC/DC	Ø16 mm	panel mount LED pilot light
AD16-16DSR11	red	110 VAC/DC	Ø16 mm	panel mount LED pilot light
AD16-16DSG11	green	110 VAC/DC	Ø16 mm	panel mount LED pilot light
AD16-16DSY11	yellow	110 VAC/DC	Ø16 mm	panel mount LED pilot light
AD16-16DSB11	blue	110 VAC/DC	Ø16 mm	panel mount LED pilot light
AD16-16DSW11	white	110 VAC/DC	Ø16 mm	panel mount LED pilot light
AD16-16DSR22	red	220 VAC/DC	Ø16 mm	panel mount LED pilot light
AD16-16DSG22	green	220 VAC/DC	Ø16 mm	panel mount LED pilot light
AD16-16DSY22	yellow	220 VAC/DC	Ø16 mm	panel mount LED pilot light
AD16-16DSB22	blue	220 VAC/DC	Ø16 mm	panel mount LED pilot light
AD16-16DSW22	white	220 VAC/DC	Ø16 mm	panel mount LED pilot light

Self-flashing LED pilot light and electronic buzzer *Lens: Ø19 x 10 - Body: L 41.5 mm*

AD16-16MR02	red	24 VAC/DC	Ø16 mm	self-flash LED p/light + buzzer
AD16-16MR22	red	220 VAC	Ø16 mm	self-flash LED p/light + buzzer

Ø22 mm LED pilot lights (high brightness) - 4 LEDs *Lens: Ø29 x 13 mm - Body: L 39 mm*

- (IP63) (IP20 terminal protection)

AD22-22DSR01	red	12 VAC/DC	Ø22 mm	panel mount LED pilot light
AD22-22DSG01	green	12 VAC/DC	Ø22 mm	panel mount LED pilot light
AD22-22DSY01	yellow	12 VAC/DC	Ø22 mm	panel mount LED pilot light
AD22-22DSB01	blue	12 VAC/DC	Ø22 mm	panel mount LED pilot light
AD22-22DSW01	white	12 VAC/DC	Ø22 mm	panel mount LED pilot light
AD22-22DSR02	red	24 VAC/DC	Ø22 mm	panel mount LED pilot light
AD22-22DSG02	green	24 VAC/DC	Ø22 mm	panel mount LED pilot light
AD22-22DSY02	yellow	24 VAC/DC	Ø22 mm	panel mount LED pilot light
AD22-22DSB02	blue	24 VAC/DC	Ø22 mm	panel mount LED pilot light
AD22-22DSW02	white	24 VAC/DC	Ø22 mm	panel mount LED pilot light
AD22-22DSR11	red	110 VAC/DC	Ø22 mm	panel mount LED pilot light
AD22-22DSG11	green	110 VAC/DC	Ø22 mm	panel mount LED pilot light
AD22-22DSY11	yellow	110 VAC/DC	Ø22 mm	panel mount LED pilot light
AD22-22DSB11	blue	110 VAC/DC	Ø22 mm	panel mount LED pilot light
AD22-22DSW11	white	110 VAC/DC	Ø22 mm	panel mount LED pilot light
AD22-22DSR22	red	220 VAC/DC	Ø22 mm	panel mount LED pilot light
AD22-22DSG22	green	220 VAC/DC	Ø22 mm	panel mount LED pilot light
AD22-22DSY22	yellow	220 VAC/DC	Ø22 mm	panel mount LED pilot light
AD22-22DSB22	blue	220 VAC/DC	Ø22 mm	panel mount LED pilot light
AD22-22DSW22	white	220 VAC/DC	Ø22 mm	panel mount LED pilot light
AD22-22DSR38	red	380 VAC	Ø22 mm	panel mount LED pilot light
AD22-22DSG38	green	380 VAC	Ø22 mm	panel mount LED pilot light
AD22-22DSY38	yellow	380 VAC	Ø22 mm	panel mount LED pilot light
AD22-22DSB38	blue	380 VAC	Ø22 mm	panel mount LED pilot light
AD22-22DSW38	white	380 VAC	Ø22 mm	panel mount LED pilot light

Ø22 mm Dual colour LED pilot light (IP63) *Lens: Ø29 x 13 mm - Body: L 54 mm*

- Dual light - red or green LED indication on one pilot light (white lens)

AD22-22DRG02	red/grn	24 VAC/DC	Ø22 mm	panel mount LED pilot light
AD22-22DRG11	red/grn	110 VAC/DC	Ø22 mm	panel mount LED pilot light
AD22-22DRG22	red/grn	220 VAC	Ø22 mm	panel mount LED pilot light

Self-flashing LED pilot light *intermittent flashing (2 Hz)*

AD22-22SR02	red	24 VAC/DC	Ø22 mm	self-flashing LED pilot light
AD22-22SR22	red	220 VAC	Ø22 mm	self-flashing LED pilot light

new



AD22-22MK02



AD22-22MR02



AD22-22VMG



AD22-22VAM...



AD30-30DSG22



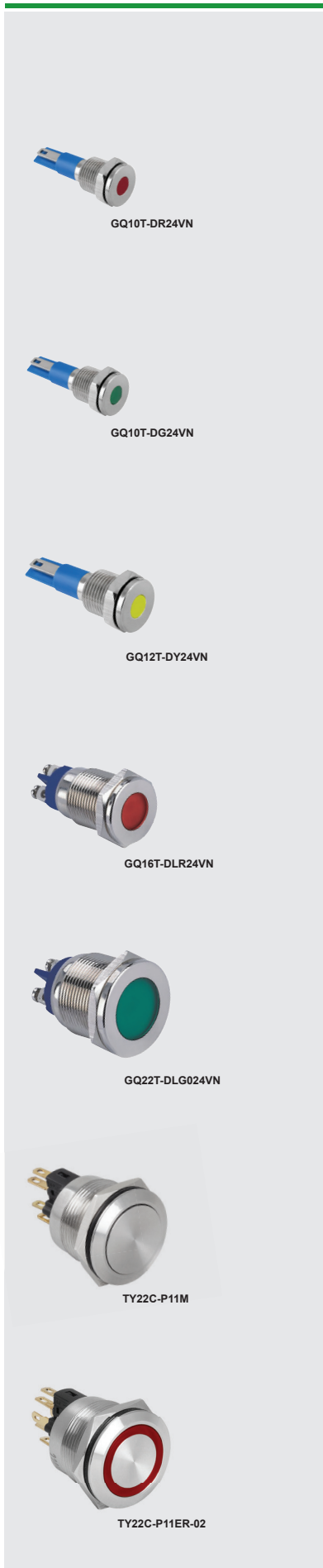
AD30-30MR02



RZ3A1A60S3

Panel mount control/indicating devices Ø22 mm

type	colour	voltage ± 20%	mounting hole Ø	description
Ø22 mm panel mount buzzer (IP40) Lens: Ø30 x 13 - Body: L 49 mm				
• Continuous sound buzzer (80dB 10 cm)				
AD22-22MK02	black	24 VAC/DC	Ø22 mm	panel mount buzzer
AD22-22MK22	black	220 VAC	Ø22 mm	panel mount buzzer
Combination buzzer/flashing LED pilot light				
• Intermittant sound and flashing pilot light				
AD22-22MR02	red	24 VAC/DC	Ø22 mm	self-flash LED p/light + buzzer
AD22-22MR22	red	220 VAC	Ø22 mm	self-flash LED p/light + buzzer
Ø22 mm panel mount volt/amp/Hz indicators (IP63) Lens: Ø30 x 15 mm - Body: L 31 mm				
AC voltmeter		20 - 500 VAC		
AD22-22VMR	red	20 - 500 VAC	Ø22 mm	voltmeter panel indicator light
AD22-22VMG	green	20 - 500 VAC	Ø22 mm	voltmeter panel indicator light
AD22-22VMY	yellow	20 - 500 VAC	Ø22 mm	voltmeter panel indicator light
AD22-22VMB	blue	20 - 500 VAC	Ø22 mm	voltmeter panel indicator light
AD22-22VMW	white	20 - 500 VAC	Ø22 mm	voltmeter panel indicator light
DC voltmeter		5 - 60 VDC		
AD22-22VBR	red	5 - 60 VDC	Ø22 mm	voltmeter panel indicator light
AD22-22VBG	green	5 - 60 VDC	Ø22 mm	voltmeter panel indicator light
AD22-22VBY	yellow	5 - 60 VDC	Ø22 mm	voltmeter panel indicator light
AD22-22VBB	blue	5 - 60 VDC	Ø22 mm	voltmeter panel indicator light
AD22-22VBW	white	5 - 60 VDC	Ø22 mm	voltmeter panel indicator light
AC ammeter		0 - 100A (with Current Transformer)		
AD22-22AM*	*	0 - 100A	Ø22 mm	ammeter panel indicator light
Combination AC volt/ammeter		20 - 500 VAC / 0 - 100A AC (with Current Transformer)		
AD22-22VAM*	*	20-500 / 0-100A	Ø22 mm	volt/ammeter panel indicator light
* Add: R (red) / G (green) / Y (yellow) / B (blue) W (white) - for colour				
Ø30 mm LED pilot lights (high brightness) (IP63) Lens: Ø36.2 x 15 - Body: L 40 mm				
AD30-30DSR02	red	24 VAC/DC	Ø30 mm	panel mount LED pilot light
AD30-30DSG02	green	24 VAC/DC	Ø30 mm	panel mount LED pilot light
AD30-30DSY02	yellow	24 VAC/DC	Ø30 mm	panel mount LED pilot light
AD30-30DSB02	blue	24 VAC/DC	Ø30 mm	panel mount LED pilot light
AD30-30DSW02	white	24 VAC/DC	Ø30 mm	panel mount LED pilot light
AD30-30DSR22	red	220 VAC/DC	Ø30 mm	panel mount LED pilot light
AD30-30DSG22	green	220 VAC/DC	Ø30 mm	panel mount LED pilot light
AD30-30DSY22	yellow	220 VAC/DC	Ø30 mm	panel mount LED pilot light
AD30-30DSB22	blue	220 VAC/DC	Ø30 mm	panel mount LED pilot light
AD30-30DSR38	red	380 VAC	Ø30 mm	panel mount LED pilot light
AD30-30DSG38	green	380 VAC	Ø30 mm	panel mount LED pilot light
AD30-30DSY38	yellow	380 VAC	Ø30 mm	panel mount LED pilot light
AD30-30DSB38	blue	380 VAC	Ø30 mm	panel mount LED pilot light
AD30-30DSW38	white	380 VAC	Ø30 mm	panel mount LED pilot light
Ø30 mm panel mount buzzer (IP40) Lens: Ø36.2 x 15 - Body: L 40 mm				
Combination buzzer/flashing LED pilot light				
• Intermittant sound and flashing				
AD30-30MR02	red	24 VAC/DC	Ø30 mm	self-flash LED p/light + buzzer
AD30-30MR22	red	220 VAC/DC	Ø30 mm	self-flash LED p/light + buzzer
Panel mount electronic timer Ø22 mm (IP65)				
Function:		On-Delay timer Range: 0 - 60 seconds		
Mounting:		Mounts through standard Ø22.5 mm pushbutton hole		
Supply Voltage:		24 VDC		
Switching current:		200 mA		
Indication:		Facia illuminates - green during timing / red - at time lapse		
Operating temp:		-5 - +55°C		
RZ3A1A60S3	0 - 60 sec	10 - 30 VDC	Ø22 mm	on-delay panel mount analog timer



Indicator lights (panel mounting)		IP67		
• Body material:	Nickel-plated brass	• Operating temp:	-25 - +55°C	
type	colour	voltage	mounting hole Ø	description
Metallic LED panel mount pilot lights - Ø10/12/16/22 mm				<i>Panel thickness: 1 – 6 mm</i>
Ø10 mm mounting hole		<i>solder / push-on terminal 2.8 x 0.5 mm</i>		depth 29.5 mm
GQ10T-DR24VN	red	24 VAC/DC	Ø10 mm	panel mount LED pilot light
GQ10T-DG24VN	green	24 VAC/DC	Ø10 mm	panel mount LED pilot light
GQ10T-DY24VN	yellow	24 VAC/DC	Ø10 mm	panel mount LED pilot light
GQ10T-DB24VN	blue	24 VAC/DC	Ø10 mm	panel mount LED pilot light
GQ10T-DW24VN	white	24 VAC/DC	Ø10 mm	panel mount LED pilot light
GQ10T-DR220VN	red	220 VAC/DC	Ø10 mm	panel mount LED pilot light
GQ10T-DG220VN	green	220 VAC/DC	Ø10 mm	panel mount LED pilot light
GQ10T-DY220VN	yellow	220 VAC/DC	Ø10 mm	panel mount LED pilot light
GQ10T-DB220VN	blue	220 VAC/DC	Ø10 mm	panel mount LED pilot light
GQ10T-DW220VN	white	220 VAC/DC	Ø10 mm	panel mount LED pilot light
Ø12 mm mounting hole		<i>solder / push-on terminal 2.8 x 0.5 mm</i>		depth 33.2 mm
GQ12T-DR24VN	red	24 VAC/DC	Ø12 mm	panel mount LED pilot light
GQ12T-DG24VN	green	24 VAC/DC	Ø12 mm	panel mount LED pilot light
GQ12T-DY24VN	yellow	24 VAC/DC	Ø12 mm	panel mount LED pilot light
GQ12T-DB24VN	blue	24 VAC/DC	Ø12 mm	panel mount LED pilot light
GQ12T-DW24VN	white	24 VAC/DC	Ø12 mm	panel mount LED pilot light
GQ12T-DR220VN	red	220 VAC/DC	Ø12 mm	panel mount LED pilot light
GQ12T-DG220VN	green	220 VAC/DC	Ø12 mm	panel mount LED pilot light
GQ12T-DY220VN	yellow	220 VAC/DC	Ø12 mm	panel mount LED pilot light
GQ12T-DB220VN	blue	220 VAC/DC	Ø12 mm	panel mount LED pilot light
GQ12T-DW220VN	white	220 VAC/DC	Ø12 mm	panel mount LED pilot light
Ø16 mm mounting hole		<i>screw terminal</i>		depth 34 mm
GQ16T-DLR24VN	red	24 VAC/DC	Ø16 mm	panel mount LED pilot light
GQ16T-DLG24VN	green	24 VAC/DC	Ø16 mm	panel mount LED pilot light
GQ16T-DLY24VN	yellow	24 VAC/DC	Ø16 mm	panel mount LED pilot light
GQ16T-DLB24VN	blue	24 VAC/DC	Ø16 mm	panel mount LED pilot light
GQ16T-DLW24VN	white	24 VAC/DC	Ø16 mm	panel mount LED pilot light
GQ16T-DLR220VN	red	220 VAC/DC	Ø16 mm	panel mount LED pilot light
GQ16T-DLG220VN	green	220 VAC/DC	Ø16 mm	panel mount LED pilot light
GQ16T-DLY220VN	yellow	220 VAC/DC	Ø16 mm	panel mount LED pilot light
GQ16T-DLB220VN	blue	220 VAC/DC	Ø16 mm	panel mount LED pilot light
GQ16T-DLW220VN	white	220 VAC/DC	Ø16 mm	panel mount LED pilot light
Ø22 mm mounting hole		<i>screw terminal</i>		lens: Ø25 x 2.5 mm - body: L 32 mm
GQ22T-DLR024VN	red	24 VAC/DC	Ø22 mm	panel mount LED pilot light
GQ22T-DLG024VN	green	24 VAC/DC	Ø22 mm	panel mount LED pilot light
GQ22T-DLY024VN	yellow	24 VAC/DC	Ø22 mm	panel mount LED pilot light
GQ22T-DLB024VN	blue	24 VAC/DC	Ø22 mm	panel mount LED pilot light
GQ22T-DLW024VN	white	24 VAC/DC	Ø22 mm	panel mount LED pilot light
GQ22T-DLR220VN	red	220 VAC/DC	Ø22 mm	panel mount LED pilot light
GQ22T-DLG220VN	green	220 VAC/DC	Ø22 mm	panel mount LED pilot light
GQ22T-DLY220VN	yellow	220 VAC/DC	Ø22 mm	panel mount LED pilot light
GQ22T-DLB220VN	blue	220 VAC/DC	Ø22 mm	panel mount LED pilot light
GQ22T-DLW220VN	white	220 VAC/DC	Ø22 mm	panel mount LED pilot light
Vandal-proof stainless steel pushbuttons (IP67)		5A 250 VAC		
Vandal proof stainless steel pushbuttons, aesthetically pleasing, mount Ø22 mm illuminated versions feature a LED ring type illumination with clear visibility for a distance.				
• Termination:	Solder terminals	• Illumination:	LED (ring indication)	
TY22C-P11M	silver momentary	Ø22 mm	1NO + 1NC pushbutton only	
TY22C-P11A	silver alternate	Ø22 mm	1NO + 1NC pushbutton only	
Illuminated pushbuttons (ring type LED)		(momentary action)		
TY22C-P11ER-02	red	24 VAC/DC	Ø22 mm 1NO + 1NC illuminated p/button	
TY22C-P11EG-02	green	24 VAC/DC	Ø22 mm 1NO + 1NC illuminated p/button	
TY22C-P11EY-02	yellow	24 VAC/DC	Ø22 mm 1NO + 1NC illuminated p/button	
TY22C-P11EB-02	blue	24 VAC/DC	Ø22 mm 1NO + 1NC illuminated p/button	
TY22C-P11EW-02	white	24 VAC/DC	Ø22 mm 1NO + 1NC illuminated p/button	
TY22C-P11ER-22	red	220 VAC	Ø22 mm 1NO + 1NC illuminated p/button	
TY22C-P11EG-22	green	220 VAC	Ø22 mm 1NO + 1NC illuminated p/button	
TY22C-P11EY-22	yellow	220 VAC	Ø22 mm 1NO + 1NC illuminated p/button	
TY22C-P11EB-22	blue	220 VAC	Ø22 mm 1NO + 1NC illuminated p/button	
TY22C-P11EW-22	white	220 VAC	Ø22 mm 1NO + 1NC illuminated p/button	



KN3C-1R021

new



KN3C-R1221



MTS-102



DS-12



AD22-POT05K



SB7-CA45R



SDL-012Y

Toggle switches

type	current lth	pos.	config	mount hole Ø	switch	description	
------	-------------	------	--------	--------------	--------	-------------	--

KN3C series - Standard toggle switches

- Rating: 20A 125 VAC / 15A 250 VAC
- Termination: 6.3 mm tab terminals
(accepts 6.3 mm std power toggle switch *m* push-on lugs)
- Mounting: **M12** x P1.0 mm threaded collar (mounts through Ø12.2 mm panel hole)
- Dielectric strength: 1500 VAC (1 minute)
- Legend: Supplied with ON/OFF legend plate

Single pole toggle switches

KN3C-R1021	15A	2 pos	on-off	12.7 mm	SPST	std power toggle switch	
KN3C-R1121	15A	2 pos	on-on	12.7 mm	SPDT	std power toggle switch	
KN3C-R1122	15A	3 pos	on-off-on	12.7 mm	SPDT	std power toggle switch	

Double pole toggle switches

KN3C-R1221	15A	2 pos	on-off	12.7 mm	DPST	std power toggle switch	
KN3C-R1321	15A	2 pos	on-on	12.7 mm	DPDT	std power toggle switch	
KN3C-R1322	15A	3 pos	on-off-on	12.7 mm	DPDT	std power toggle switch	

Accessories - for above toggle switches

WP-02	boot	rubber protection boot M12 for KN3C toggle switches					
-------	------	---	--	--	--	--	--

MTS series - Miniature toggle switches

- Rating: 6A 125 VAC / 3A 250 VAC
- Termination: Solder terminals (W) 2.05 mm
- Mounting: **M6** x 0.75 threaded collar (mounts through Ø6 mm panel hole)
- Dielectric strength: 1000 VAC (1 minute)
- Operating temp: -25 to +85°C

Single pole miniature toggle switches

MTS-102	3A	2 pos	on-on	6.5 mm	SPDT	miniature toggle switch	
MTS-102T	3A	2 pos	on-(on)	6.5 mm	SPDT	spring return from R	
MTS-103	3A	3 pos	on-off-on	6.5 mm	SPDT	centre off	
MTS-103D	3A	3 pos	(on)-off-(on)	6.5 mm	SPDT	spring return from L+R	
MTS-103T	3A	3 pos	on-off-(on)	6.5 mm	SPDT	spring return from R	

Double pole miniature toggle switches

MTS-202	3A	2 pos	on-on	6.5 mm	SPDT	miniature toggle switch	
MTS-203	3A	3 pos	on-off-on	6.5 mm	SPDT	centre off	

Miniature pushbutton switch - black button

DS-12	3A	2 pos	on-(on)	6.5 mm	SPDT	spring return (<i>blk</i> button)	
-------	----	-------	---------	--------	------	------------------------------------	--

Accessories - for above miniature switches

WP-01	boot	rubber protection boot for MTS miniature toggle switch					
-------	------	---	--	--	--	--	--

Panel mount potentiometer Ø22 mm (IP65)

Potentiometer - (1 turn)

AD22-POT01K	black	–	0 - 1kΩ	Ø22 mm	–	panel mnt potentiometer	
AD22-POT05K	black	–	0 - 5kΩ	Ø22 mm	–	panel mnt potentiometer	

Econo one-piece pushbuttons Ø22 mm (IP40)

type	colour	contact	mounting hole Ø	description	
------	--------	---------	-----------------	-------------	--

SB7-CA45R	red	1NO+1NC	Ø22 mm	one-piece flush pushbutton	
SB7-CA35G	green	1NO+1NC	Ø22 mm	one-piece flush pushbutton	
SB7-CA25B	black	1NO+1NC	Ø22 mm	one-piece flush pushbutton	
SB7-CD25B	black	1NO+1NC	Ø22 mm	two position selector switch	

Neon indicating pilot lights Ø10 mm (IP65) 6.3 mm push-on tab terminals

type	colour	voltage		mounting hole Ø	description
		230 VAC	230 VAC		
SDL-012R	red	230 VAC	230 VAC	Ø10 mm	panel mount neon indicator light
SDL-012G	green	230 VAC	230 VAC	Ø10 mm	panel mount neon indicator light
SDL-012Y	yellow	230 VAC	230 VAC	Ø10 mm	panel mount neon indicator light

For "push-on" female disconnect terminals for above **SDL / GQ** series (metallic pilot light- see page **D-28**) – see page **L-20**

