

new



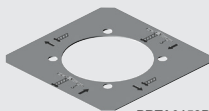
F661...



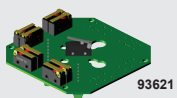
F662AL...



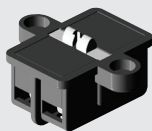
PRVV9035PE



PRTA0152PE



93621



PRSL0191PI

New **HERCULES** joystick controller, completely new design for applications in harsh environments. Attention to design, ergonomics, operation accuracy ensure reliability and extended mechanical life. Available with up to 5 speeds in each direction with cross or 360° movement.

- IP protection degree: IP65 (*enclosure dependant*)
- Ambient temperature: Operational -25°C/+70°C
- Mechanical life: 5 x 10⁶ operations
- Connections: Screw type terminals • Utilisation category: AC 15
- Conformity to standards: IEC/EN 60204-1, 60947-1, 60947-5-1, 61000-6-2/3

type	no. steps		movement			description
	↑ ↓	← →	360°	cross	mech. interlock	

Hercules - Version with micro switch-board (rated thermal current 8A)

- Standard version with switch board and mounted high reliability micro switches
- Knob type lever with **dead man safety** mechanically interlocked and 1CO contact
- Inductive loads: 1A 125 VAC, 0.5A 250 VAC, 1A 30 VDC
- Resistive loads: 3A 125 VAC, 2A 250 VAC, 3A 30 VDC

F661AC0110	1	0		x	x	industrial joystick controller
F661AL0111	1	1	x		x	industrial joystick controller
F661AC0220	2	0		x	x	industrial joystick controller
F661AL0222	2	2	x		x	industrial joystick controller
F661AC0330	3	0		x	x	industrial joystick controller
F661AL0331	3	1	x		x	industrial joystick controller
F661AL0332	3	2	x		x	industrial joystick controller
F661AL0333	3	3	x		x	industrial joystick controller
F661AC0440	4	0		x	x	industrial joystick controller
F661AL0441	4	1	x		x	industrial joystick controller
F661AL0442	4	2	x		x	industrial joystick controller
F661AL0443	4	3	x		x	industrial joystick controller
F661AL0444	4	4	x		x	industrial joystick controller
F661AC0550	5	0		x	x	industrial joystick controller
F661AC0551	5	1	x		x	industrial joystick controller
F661AC0552	5	2	x		x	industrial joystick controller
F661AL0553	5	3	x		x	industrial joystick controller
F661AL0555	5	5	x		x	industrial joystick controller

Hercules-CK - Version with independent switches (rated thermal current 10A)

- Knob type lever mechanically interlock and 2 x NC contacts
- Rated current: 3A 250 VAC

F662AC0220	2	0		x	x	industrial joystick controller
F662AL0333	3	3	x		x	industrial joystick controller
F662AL0444	4	4	x		x	industrial joystick controller
F662AL0551	5	1		x	x	industrial joystick controller
F662AL0555	5	5	x		x	industrial joystick controller

Accessories for Hercules joysticks (above)

PA66301	mount kit				for 1 potentiometer onto Hercules joystick controller
PA66302	mount kit				for 2 potentiometer onto Hercules joystick controller
PA66303	mount kit				for 1 potentiometer onto Hercules-CK joystick controller
PA66304	mount kit				for 2 potentiometer onto Hercules-CK joystick controller
PRVV9035PE	2.2	kΩ			Megatron potentiometer for joystick controller
PRVV9020PE	4.7	kΩ			Megatron potentiometer for joystick controller
PRVV9025PE	10	kΩ			Megatron potentiometer for joystick controller
PRTA0150PE	label	blank			label/legend plate for joystick controller
PRTA0151PE	label	"lifting-traverse"			label/legend plate for joystick controller
PRTA0152PE	label	"trolley-rotation"			label/legend plate for joystick controller

Spares for above Hercules joystick switches

93621	switch board	3 speed (8 switches)		for Hercules joystick controller
93625	switch board	5 speed (12 switches)		for Hercules joystick controller
PRSL4540PI	switch	2 x NC		for Hercules-CK joystick controller
PRSL4541PI	2 x switches	2 x NC		for Hercules-CK joystick controller
PRSL0191PI	switch	2 x NC		interlock for Hercules-CK joystick controller
PRGU6050PE	bellows			spare rubber bellows for Hercules joystick controller
PRSL9890PI	half guide			half cross guide for lever of joysticks (2 x required)

Stepless proportional joystick with built-in analog actuator (resolution: 10 bit)

- Supply voltage: 12 - 48 VAC/DC
- Proportional outputs: 2 x Current 4 - 20mA (or) 2 x Voltage 0 - 5 VDC
- Directional switches: 4 x directional switches

F661EC25555002	stepless				proportional output joystick controller
----------------	----------	--	--	--	---