

PLNU1AT25W



PLN131311

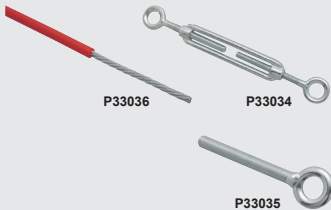


P2L131312



P33032

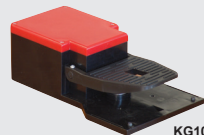
P33033



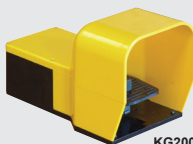
P33036

P33034

P33035



KG100S11



KG200S11



KR200S11

Rope-operated pull lever limit switches

- Heavy-duty metal body
- Supplied with cable gland (PG11)
- Protection degree: IP65

type	description	operating force (N)	contacts
------	-------------	---------------------	----------

PLNU series - Heavy-duty non-latching rope-operated limit switches

- Direct (*positive*) opening action - safety function according to IEC/EN 60947-5-1
- Thermal current: lth: 10A Ui: 400 VAC
- Dimensions: (H) 89 x (W) 84 x (D) 40.5 mm

PLNU1AT25W	rope operated limit switch	(<i>non-latching</i>)	25N	1NO + 1NC
------------	----------------------------	-------------------------	-----	-----------

P2LU series - Heavy-duty latching rope-operated limit switches

Latching (*hand reset*) limit switches EN 418 compliant

- Latching with push button "Reset" facility on switch
- Thermal current: lth: 6A Ui: 400 VAC
- Dimensions: (H) 175 x (W) 85 x (D) 47 mm

P2LU series (H) 175 x (W) 85 x (D) 47 mm

P2LU1SAT75AG	rope operated limit switch	(<i>latching/hand reset</i>)	7.5 kg	1NO + 1NC
P2LU1SAT15AG	rope operated limit switch	(<i>latching/hand reset</i>)	15 kg	1NO + 1NC

Heavy duty rope-operated limit switches with pre-tensioning facility

- Latching (*hand reset*) limit switches EN418 compliant
- 2 NC contacts (*when pre-tensioned*) 1 opens if rope breaks the other opens when rope is pulled
- Green indicator for correct pre-tensioning adjustment
- Large field of overlap for easier regulation of pre-tensioning
- Latching with push button "Reset" facility on switch
- Thermal current: lth: 6A Ui: 400 VAC

with pre tensioned rope

PLN series - 60N (H) 82 x (W) 104 x (D) 40.5 mm

PLN131311	rope operated limit switch	(<i>latching/hand reset</i>)	60N - 6kg	1NO + 1NO
-----------	----------------------------	--------------------------------	-----------	-----------

P2L series - 120N (H) 161 x (W) 100 x (D) 48.5 mm

P2L131312	rope operated limit switch	(<i>latching/hand reset</i>)	120N - 12kg	1NO + 1NO
-----------	----------------------------	--------------------------------	-------------	-----------

Accessories for rope-operated switches

P33032	adjustable rope terminal clamp Ø 5 mm
P33033	rope eye of Ø 5 mm (<i>cable end thimble</i>)
P33034	turn buckle M6 x 60 for rope tensioning
P33035	threaded eye bolt M8 guide for rope
P33036	steel rope 0.5 mm PVC sheathed (<i>red insulated</i>) (100met)

Industrial foot switches thermoplastic and metallic (IP54)

- Self-extinguishing double insulation polymer thermoplastic
- Cable entry: M20 x 1.5

KG series - Thermoplastic foot switches

- Self-extinguishing double insulation thermoplastic

KG100S11	open-type industrial foot switch	thermoplastic	1NO + 1NC
KG200S11	closed-type industrial foot switch	thermoplastic	1NO + 1NC

KR series - Metallic foot switches

- Aluminium zinc alloy body

KR100S11	open-type industrial foot switch	diecast	1NO + 1NC
KR200S11	closed-type industrial foot switch	diecast	1NO + 1NC

Additional charges

KGX01	kit for adding a second contact block to foot switches	-
KGX02	contact block mounting bracket	-
KX B S11	additional contact block for above foot switches	1NO + 1NC