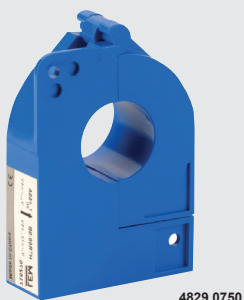




new



DC voltage measurement modules

DIRIS Digiware U-31/32dc module measures DC voltage for the entire system. It measures up to 180 VDC with a direct connection and is therefore compatible with typical nominal voltages (24 VDC, 48 VDC..)

- Voltage measurement accuracy: Class 0.5
- 1 single voltage measurement point for the entire system
- Voltage adaptors makes the system compatible with all voltage levels up to 1650 VDC
- RJ45 bus allows you measurement of voltage as well as supply power to all connected devices

type	range	voltage	description	module width
U-31dc Metering module				
4829 0150	19...60 VDC		modular voltage measurement metering module	18 mm
U-32dc Metering module				
4829 0151	38...180 VDC		modular voltage measurement metering module	18 mm
DC voltage adaptor				
4829 0153	200..600 VDC		U500DC modular voltage adaptor metering module	53 mm
4829 0154	400..1200 VDC		U1000DC modular voltage adaptor metering module	53 mm
4829 0155	1200..1650 VDC		U1500DC modular voltage adaptor metering module	53 mm

DC measurement modules

Allocates the load to be measured or to monitor independent current inputs. Measurement of up to 3 DC circuit per Idc modules.

- Metering: \pm kWh
- Accuracy of current measurement: Class 0.5
- Multi-measurement: Idc, Udc, Iripple, Irms
- Quick RJ45 connection between modules and RJ12-Molex to current sensors

type	description	current Inputs	module width
I-30dc metering modules			
4829 0156	I-30dc modular current measurement metering module	3	18 mm
I-35dc metering and analysis module			
4829 0157	I-35dc modular current measurement analysis module	3	18 mm

DC current sensors

The DC current sensors measure the DC load currents of an electrical installation and transmit information to the Idc measurement modules via an RJ12 to Molex cable on the sensor side. The range comprises solid-core and split-core sensors (*Open-loop Hall effect*) ranging from 50 to 5000A in various sizes allowing them to be used in new or existing electrical installations.

- Automatic detection of sensor type and current rating
- Up to 3 different DC sensors can be connected to the same Idc module
- Accuracy of current measurement <1%
- Plug and play RJ12 molex cables (*for ease of wiring - preventing wiring errors*) see page E-13

type	frame size	nominal current (A)	description	pitch (mm)	hole size (mm)
DC solid-core current sensors (frame size 1)					
4829 0700	1	50A	DC solid-core current sensor	18	■ 10.4 x 20.4
4829 0701	1	100A	DC solid-core current sensor	25	■ 10.4 x 20.4
4829 0702	1	200A	DC solid-core current sensor	35	■ 10.4 x 20.4
4829 0703	1	300A	DC solid-core current sensor	45	■ 10.4 x 20.4
<i>Up to 5000A available on special request.</i>					
DC split-core current sensors (frame size 1)					
4829 0750	1	50A	DC split-core current sensor	0	Ø 21
4829 0751	1	100A	DC split-core current sensor	0	Ø 21
4829 0752	1	200A	DC split-core current sensor	0	Ø 21
<i>Up to 2000A available on special request.</i>					