










PLUGS & SOCKETS

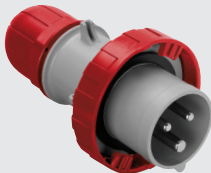
Industrial plugs and sockets		Scame	I-1...5
Industrial switched sockets		Scame	I-6...7
Distribution boards		Scame	I-8...9
Industrial plug adaptors		Scame	I-9
Weatherproof switches and sockets		Scame	I-10
Weatherproof plugs and sockets		Wieland	I-11
Installation connectors		Wieland	I-12
Multi pole connectors		Wieland	I-13...15
Flat blade connectors		Rema	I-16...17



213.163...



213.633...



218.163...



218.1636...



313.324...



318.324...

Optima series 16A - 32A - 63A - 125A

- Insulation voltage: 690 VAC
- Standards: IEC 60309-2
- Material: Thermoplastic (*halogen free*)
- Impact resistance: IK08 (*1.7kg with a striking energy of 2J*)
- Operating temperature: -25 – +40°C (*max operating temperature +60°C*)
- Cable inlet: External cable stay with tulip clamping IP67 gland

Voltage Coding

■ 100 to 130V*
■ 200 to 250V
■ 380 to 480V
■ 480 to 525V

* On request

type	rated current	(h) pos.	pin configuration	IP protection 44/54 66/7/9	description	cable outlet
------	---------------	----------	-------------------	------------------------------	-------------	--------------

Male plugs (straight cable exit) 16 - 125A

213.1633	16A	6h	■ 2P+E (3pin)	●	male ind. plug	straight
213.1636	16A	6h	■ 3P+E (4pin)	●	male ind. plug	straight
213.1637	16A	6h	■ 3P+N+E (5pin)	●	male ind. plug	straight
213.3233	32A	6h	■ 2P+E (3pin)	●	male ind. plug	straight
213.3236	32A	6h	■ 3P+E (4pin)	●	male ind. plug	straight
213.3237	32A	6h	■ 3P+N+E (5pin)	●	male ind. plug	straight
213.6333	63A	6h	■ 2P+E (3pin)	●	male ind. plug	straight
213.6336	63A	6h	■ 3P+E (4pin)	●	male ind. plug	straight
213.6337	63A	6h	■ 3P+N+E (5pin)	●	male ind. plug	straight
218.1633	16A	6h	■ 2P+E (3pin)	●	male ind. plug	straight
218.1636	16A	6h	■ 3P+E (4pin)	●	male ind. plug	straight
218.16366	16A	7h	■ 3P+E (4pin)	●	male ind. plug	straight
218.1637	16A	6h	■ 3P+N+E (5pin)	●	male ind. plug	straight
218.16376	16A	7h	■ 3P+N+E (5pin)	●	male ind. plug	straight
218.3233	32A	6h	■ 2P+E (3pin)	●	male ind. plug	straight
218.3236	32A	6h	■ 3P+E (4pin)	●	male ind. plug	straight
218.32364*	32A	3h	■ 3P+E (4pin)	●	male ind. plug	straight
218.32366	32A	7h	■ 3P+E (4pin)	●	male ind. plug	straight
218.3237	32A	6h	■ 3P+N+E (5pin)	●	male ind. plug	straight
218.32376	32A	7h	■ 3P+N+E (5pin)	●	male ind. plug	straight
218.6333	63A	6h	■ 2P+E (3pin)	●	male ind. plug	straight
218.6336	63A	6h	■ 3P+E (4pin)	●	male ind. plug	straight
218.63366	63A	7h	■ 3P+E (4pin)	●	male ind. plug	straight
218.6337	63A	6h	■ 3P+N+E (5pin)	●	male ind. plug	straight
218.63376	63A	7h	■ 3P+N+E (5pin)	●	male ind. plug	straight
218.12533	125A	6h	■ 2P+E (3pin)	●	male ind. plug	straight
218.12536	125A	6h	■ 3P+E (4pin)	●	male ind. plug	straight
218.125366	125A	7h	■ 3P+E (4pin)	●	male ind. plug	straight
218.12537	125A	6h	■ 3P+N+E (5pin)	●	male ind. plug	straight
218.125376	125A	7h	■ 3P+N+E (5pin)	●	male ind. plug	straight

Connectors/couplers (female in-line socket)

313.1643	16A	6h	■ 2P+E (3pin)	●	female connector	straight
313.1646	16A	6h	■ 3P+E (4pin)	●	female connector	straight
313.1647	16A	6h	■ 3P+N+E (5pin)	●	female connector	straight
313.3243	32A	6h	■ 2P+E (3pin)	●	female connector	straight
313.3246	32A	6h	■ 3P+E (4pin)	●	female connector	straight
313.3247	32A	6h	■ 3P+N+E (5pin)	●	female connector	straight
313.6343	63A	6h	■ 2P+E (3pin)	●	female connector	straight
313.6346	63A	6h	■ 3P+E (4pin)	●	female connector	straight
313.6347	63A	6h	■ 3P+N+E (5pin)	●	female connector	straight
318.1643	16A	6h	■ 2P+E (3pin)	●	female connector	straight
318.1646	16A	6h	■ 3P+E (4pin)	●	female connector	straight
318.16466	16A	7h	■ 3P+E (4pin)	●	female connector	straight
318.1647	16A	6h	■ 3P+N+E (5pin)	●	female connector	straight
318.16476	16A	7h	■ 3P+N+E (5pin)	●	female connector	straight
318.3243	32A	6h	■ 2P+E (3pin)	●	female connector	straight
318.3246	32A	6h	■ 3P+E (4pin)	●	female connector	straight
318.32464*	32A	3h	■ 3P+E (4pin)	●	female connector	straight
318.32466	32A	7h	■ 3P+E (4pin)	●	female connector	straight
318.3247	32A	6h	■ 3P+N+E (5pin)	●	female connector	straight
318.32476	32A	7h	■ 3P+N+E (5pin)	●	female connector	straight
318.6343	63A	6h	■ 2P+E (3pin)	●	female connector	straight
318.6346	63A	6h	■ 3P+E (4pin)	●	female connector	straight
318.63466	63A	7h	■ 3P+E (4pin)	●	female connector	straight
318.6347	63A	6h	■ 3P+N+E (5pin)	●	female connector	straight
318.63476	63A	7h	■ 3P+N+E (5pin)	●	female connector	straight

Continued overleaf....

* Refrigerated container (Reefer plugs)



243.639...



248.329...



240.639...T



570.90164

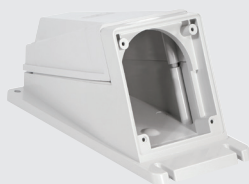
type	rated current	(h) pos.	pin configuration	IP protection 44/54 66/7/9	description	flange size
continued... Connectors/couplers (female in-line socket)						
318.12543	125A	6h	2P+E (3pin)	●	female connector	straight
318.12546	125A	6h	3P+E (4pin)	●	female connector	straight
318.125466	125A	7h	3P+E (4pin)	●	female connector	straight
318.12547	125A	6h	3P+N+E (5pin)	●	female connector	straight
318.125476	125A	7h	3P+N+E (5pin)	●	female connector	straight
Optima series - Appliance inlets (male pins - accept female connector)						
Flush mount appliance inlet (straight inlet)						
243.1693	16A	6h	2P+E (3pin)	●	flush mnt appliance inlet	75 x 75
243.1696	16A	6h	3P+E (4pin)	●	flush mnt appliance inlet	75 x 75
243.1697	16A	6h	3P+N+E (5pin)	●	flush mnt appliance inlet	75 x 75
243.3293	32A	6h	2P+E (3pin)	●	flush mnt appliance inlet	75 x 75
243.3296	32A	6h	3P+E (4pin)	●	flush mnt appliance inlet	75 x 75
243.3297	32A	6h	3P+N+E (5pin)	●	flush mnt appliance inlet	75 x 75
243.6393	63A	6h	2P+E (3pin)	●	flush mnt appliance inlet	100 x 110
243.6396	63A	6h	3P+E (4pin)	●	flush mnt appliance inlet	100 x 110
243.6397	63A	6h	3P+N+E (5pin)	●	flush mnt appliance inlet	100 x 110
248.1693	16A	6h	2P+E (3pin)	●	flush mnt appliance inlet	75 x 75
248.1696	16A	6h	3P+E (4pin)	●	flush mnt appliance inlet	75 x 75
248.16966	16A	7h	3P+E (4pin)	●	flush mnt appliance inlet	75 x 75
248.1697	16A	6h	3P+N+E (5pin)	●	flush mnt appliance inlet	75 x 75
248.16976	16A	7h	3P+N+E (5pin)	●	flush mnt appliance inlet	75 x 75
248.3293	32A	6h	2P+E (3pin)	●	flush mnt appliance inlet	75 x 75
248.3296	32A	6h	3P+E (4pin)	●	flush mnt appliance inlet	75 x 75
248.32966	32A	7h	3P+E (4pin)	●	flush mnt appliance inlet	75 x 75
248.3297	32A	6h	3P+N+E (5pin)	●	flush mnt appliance inlet	75 x 75
248.32976	32A	7h	3P+N+E (5pin)	●	flush mnt appliance inlet	75 x 75
248.6393	63A	6h	2P+E (3pin)	●	flush mnt appliance inlet	100 x 110
248.6396	63A	6h	3P+E (4pin)	●	flush mnt appliance inlet	100 x 110
248.63966	63A	7h	3P+E (4pin)	●	flush mnt appliance inlet	100 x 110
248.6397	63A	6h	3P+N+E (5pin)	●	flush mnt appliance inlet	100 x 110
248.63976	63A	7h	3P+N+E (5pin)	●	flush mnt appliance inlet	100 x 110
248.12593	125A	6h	2P+E (3pin)	●	flush mnt appliance inlet	114 x 114
248.12596	125A	6h	3P+E (4pin)	●	flush mnt appliance inlet	114 x 114
248.125966	125A	7h	3P+E (4pin)	●	flush mnt appliance inlet	114 x 114
248.12597	125A	6h	3P+N+E (5pin)	●	flush mnt appliance inlet	114 x 114
248.125976	125A	7h	3P+N+E (5pin)	●	flush mnt appliance inlet	114 x 114
Surface mount appliance inlet (angled inlet) cable entry						
240.1693	16A	6h	2P+E (3pin)	●	surf mnt appliance inlet	M25
240.1696	16A	6h	3P+E (4pin)	●	surf mnt appliance inlet	M25
240.1697	16A	6h	3P+N+E (5pin)	●	surf mnt appliance inlet	M25
240.3293	32A	6h	2P+E (3pin)	●	surf mnt appliance inlet	M32
240.3296	32A	6h	3P+E (4pin)	●	surf mnt appliance inlet	M32
240.3297	32A	6h	3P+N+E (5pin)	●	surf mnt appliance inlet	M32
240.6393T	63A	6h	2P+E (3pin)	●	surf mnt appliance inlet	M40
240.6396T	63A	6h	3P+E (4pin)	●	surf mnt appliance inlet	M40
240.6397T	63A	6h	3P+N+E (5pin)	●	surf mnt appliance inlet	M40
245.1693	16A	6h	2P+E (3pin)	●	surf mnt appliance inlet	M25
245.1696	16A	6h	3P+E (4pin)	●	surf mnt appliance inlet	M25
245.1697	16A	6h	3P+N+E (5pin)	●	surf mnt appliance inlet	M25
245.3293	32A	6h	2P+E (3pin)	●	surf mnt appliance inlet	M32
245.3296	32A	6h	3P+E (4pin)	●	surf mnt appliance inlet	M32
245.3297	32A	6h	3P+N+E (5pin)	●	surf mnt appliance inlet	M32
245.6393T	63A	6h	2P+E (3pin)	●	surf mnt appliance inlet	M40
245.6396T	63A	6h	3P+E (4pin)	●	surf mnt appliance inlet	M40
245.6397T	63A	6h	3P+N+E (5pin)	●	surf mnt appliance inlet	M40
245.12597T	125A	6h	3P+N+E (5pin)	●	surf mnt appliance inlet	M63
Protection caps for plugs and appliance inlets IP66/IP67/IP69						
570.90163	16A	-	2P+E	●	covers for plugs and inlets	
570.90164	16A	-	3P+E	●	covers for plugs and inlets	
570.90165	16A	-	3P+N+E	●	covers for plugs and inlets	
570.90324	32A	-	2/3P+E	●	covers for plugs and inlets	
570.90325	32A	-	3P+N+E	●	covers for plugs and inlets	
570.9063	63A	-	all configurations	●	covers for plugs and inlets	
570.9125	125A	-	all configurations	●	covers for plugs and inlets	



413.166...



418.636...



570.M0125



423.166...



428.166...

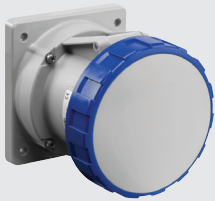
Optima series - Panel mount sockets 16A - 32A - 63A - 125A

- Insulation voltage: 690 VAC
- Operating temperature: -25 – +40°C (max operating temperature +60°C)
- Material: Thermoplastic (halogen free) / Impact resistance IK08

type	rated current	(h) pos.	pin configuration	IP protection 44/54 67/8/9	description	flange size
Flush mount angled socket outlet (18°) 16A - 125A Standards: IEC 60309-2						
413.1663	16A	6h	2P+E (3pin)	●	angled socket	70 x 87
413.1666	16A	6h	3P+E (4pin)	●	angled socket	70 x 87
413.1667	16A	6h	3P+N+E (5pin)	●	angled socket	70 x 87
413.3263	32A	6h	2P+E (3pin)	●	angled socket	84 x 106
413.3266	32A	6h	3P+E (4pin)	●	angled socket	84 x 106
413.3267	32A	6h	3P+N+E (5pin)	●	angled socket	84 x 106
413.6363	63A	6h	2P+E (3pin)	●	angled socket	100 x 110
413.6366	63A	6h	3P+E (4pin)	●	angled socket	100 x 110
413.6367	63A	6h	3P+N+E (5pin)	●	angled socket	100 x 110
418.1663	16A	6h	2P+E (3pin)	●	angled socket	70 x 87
418.1666	16A	6h	3P+E (4pin)	●	angled socket	70 x 87
418.16666	16A	7h	3P+E (4pin)	●	angled socket	70 x 87
418.1667	16A	6h	3P+N+E (5pin)	●	angled socket	70 x 87
418.16676	16A	7h	3P+N+E (5pin)	●	angled socket	70 x 87
418.3263	32A	6h	2P+E (3pin)	●	angled socket	84 x 106
418.3266	32A	6h	3P+E (4pin)	●	angled socket	84 x 106
418.32664*	32A	3h	3P+E (4pin)	●	angled socket	84 x 106
418.32666	32A	7h	3P+E (4pin)	●	angled socket	84 x 106
418.3267	32A	6h	3P+N+E (5pin)	●	angled socket	84 x 106
418.32676	32A	7h	3P+N+E (5pin)	●	angled socket	84 x 106
418.6363	63A	6h	2P+E (3pin)	●	angled socket	100 x 110
418.6366	63A	6h	3P+E (4pin)	●	angled socket	100 x 110
418.63666	63A	7h	3P+E (4pin)	●	angled socket	100 x 110
418.6367	63A	6h	3P+N+E (5pin)	●	angled socket	100 x 110
418.63676	63A	7h	3P+N+E (5pin)	●	angled socket	100 x 110
418.12563	125A	6h	2P+E (3pin)	●	angled socket	114 x 114
418.12566	125A	6h	3P+E (4pin)	●	angled socket	114 x 114
418.125666	125A	7h	3P+E (4pin)	●	angled socket	114 x 114
418.12567	125A	6h	3P+N+E (5pin)	●	angled socket	114 x 114
418.125676	125A	7h	3P+N+E (5pin)	●	angled socket	114 x 114
Micro-switch - for plug inserted indication of above angled outlet sockets only						
654.0391	16/32A		1x NO		micro-switch for above angled sockets	-
654.0392	16/32A		1x NC		micro-switch for above angled sockets	-
654.0393	63/125A		1x NO		micro-switch for above angled sockets	-
654.0394	63/125A		1x NC		micro-switch for above angled sockets	-
Housings to surface mount (above) angled sockets						
570.0116	16A		angled housing	●	for p/mnt sockets	70 x 87
570.0016	16A		straight housing	●	for p/mnt sockets	70 x 87
570.0132	32A		angled housing	●	for p/mnt sockets	84 x 106
570.0032	32A		straight housing	●	for p/mnt sockets	84 x 106
570.M0163	63A		angled housing	●	for p/mnt sockets	100 x 110
570.M0125	125A		angled housing	●	for p/mnt sockets	114 x 114
Flush mount straight socket outlet 16A - 125A Standards: IEC 60309-2						
423.1663	16A	6h	2P+E (3pin)	●	straight socket	75 x 75
423.1663/R	16A	6h	2P+E (3pin)	●	straight socket	62 x 62
423.1666	16A	6h	3P+E (4pin)	●	straight socket	75 x 75
423.1666/R	16A	6h	3P+E (4pin)	●	straight socket	62 x 62
423.1667	16A	6h	3P+N+E (5pin)	●	straight socket	75 x 75
423.3263	32A	6h	2P+E (3pin)	●	straight socket	75 x 75
423.3266	32A	6h	3P+E (4pin)	●	straight socket	75 x 75
423.3267	32A	6h	3P+N+E (5pin)	●	straight socket	75 x 75
423.6363	63A	6h	2P+E (3pin)	●	straight socket	100 x 110
423.6366	63A	6h	3P+E (4pin)	●	straight socket	100 x 110
423.6367	63A	6h	3P+N+E (5pin)	●	straight socket	100 x 110
428.1663	16A	6h	2P+E (3pin)	●	straight socket	75 x 75
428.1666	16A	6h	3P+E (4pin)	●	straight socket	75 x 75
428.1667	16A	6h	3P+N+E (5pin)	●	straight socket	75 x 75
428.3263	32A	6h	2P+E (3pin)	●	straight socket	75 x 75
428.3266	32A	6h	3P+E (4pin)	●	straight socket	75 x 75
428.32664*	32A	3h	3P+E (4pin)	●	straight socket	75 x 75
428.3267	32A	6h	3P+N+E (5pin)	●	straight socket	75 x 75

Continued overleaf....

* Refrigerated container (Reefer plugs)



428.636...



513.325...



518.635...T



518.325...T

type	rated current	(h) pos.	pin configuration	IP protection		description	flange size
				44/54	67/8/9		

continued... Flush mount socket outlet - straight

428.6363	63A	6h	2P+E (3pin)	●		straight socket	100 x 110
428.6366	63A	6h	3P+E (4pin)	●		straight socket	100 x 110
428.6367	63A	6h	3P+N+E (5pin)	●		straight socket	100 x 110
428.12563	125A	6h	2P+E (3pin)	●		straight socket	114 x 114
428.12566	125A	6h	3P+E (4pin)	●		straight socket	114 x 114
428.12567	125A	6h	3P+N+E (5pin)	●		straight socket	114 x 114

OPTIMA series - Surface-mount socket outlets

- Insulation voltage: 690 VAC
- Operating temperature: -25 – +40°C (max operating temperature +60°C)
- Material: Thermoplastic (halogen free)
- Impact resistance: IK08 (1.7kg with a striking energy of 2J)

type	rated current	(h) pos.	pin configuration	IP protection		description	cable entry
				44/54	67/8/9		

BASE version - IP44 compact, economical, slimline socket outlets (angled)

513.1653	16A	6h	2P+E (3pin)	●		surface mnt socket	M20/25
513.1656	16A	6h	3P+E (4pin)	●		surface mnt socket	M20/25
513.1657	16A	6h	3P+N+E (5pin)	●		surface mnt socket	M20/25
513.3253	32A	6h	2P+E (3pin)	●		surface mnt socket	M32
513.3256	32A	6h	3P+E (4pin)	●		surface mnt socket	M32
513.3257	32A	6h	3P+N+E (5pin)	●		surface mnt socket	M32

TOP version - IP44 and IP67 (angled)

- Compact, flexible, safe - removable socket section for ease of wiring
- Reversible base (1 or 2 cable outlets top or bottom entry)

513.1653T	16A	6h	2P+E (3pin)	●		surface mnt socket	M20/25
513.1656T	16A	6h	3P+E (4pin)	●		surface mnt socket	M20/25
513.1657T	16A	6h	3P+N+E (5pin)	●		surface mnt socket	M20/25
513.3253T	32A	6h	2P+E (3pin)	●		surface mnt socket	M32
513.3256T	32A	6h	3P+E (4pin)	●		surface mnt socket	M32
513.3257T	32A	6h	3P+N+E (5pin)	●		surface mnt socket	M32
513.6353T	63A	6h	2P+E (3pin)	●		surface mnt socket	M40
513.6356T	63A	6h	3P+E (4pin)	●		surface mnt socket	M40
513.6357T	63A	6h	3P+E (4pin)	●		surface mnt socket	M40
518.1653T	16A	6h	2P+E (3pin)	●		surface mnt socket	M20/25
518.1656T	16A	6h	3P+E (4pin)	●		surface mnt socket	M20/25
518.1657T	16A	6h	3P+N+E (5pin)	●		surface mnt socket	M20/25
518.3253T	32A	6h	2P+E (3pin)	●		surface mnt socket	M32
518.3256T	32A	6h	3P+E (4pin)	●		surface mnt socket	M32
518.32564T*	32A	3h	3P+E (4pin)	●		surface mnt socket	M32
518.3257T	32A	6h	3P+N+E (5pin)	●		surface mnt socket	M32
518.6353T	63A	6h	2P+E (3pin)	●		surface mnt socket	M40
518.6356T	63A	6h	3P+E (4pin)	●		surface mnt socket	M40
518.6357T	63A	6h	3P+N+E (5pin)	●		surface mnt socket	M40
518.12553T	125A	6h	2P+E (3pin)	●		surface mnt socket	M63
518.12556T	125A	6h	3P+E (4pin)	●		surface mnt socket	M63
518.12557T	125A	6h	3P+N+E (5pin)	●		surface mnt socket	M63

Surface mount switch sockets (no mechanical interlocked)

513.1653TS	16A	6h	2P+E (3pin)	●		surface mnt socket	M25
513.1656TS	16A	6h	3P+E (4pin)	●		surface mnt socket	M25
513.1657TS	16A	6h	3P+N+E (5pin)	●		surface mnt socket	M25
513.3253TS	32A	6h	2P+E (3pin)	●		surface mnt socket	M32
513.3256TS	32A	6h	3P+E (4pin)	●		surface mnt socket	M32
513.3257TS	32A	6h	3P+N+E (5pin)	●		surface mnt socket	M32
518.1653TS	16A	6h	2P+E (3pin)	●		surface mnt socket	M25
518.1656TS	16A	6h	3P+E (4pin)	●		surface mnt socket	M25
518.1657TS	16A	6h	3P+N+E (5pin)	●		surface mnt socket	M25
518.3253TS	32A	6h	2P+E (3pin)	●		surface mnt socket	M32
518.3256TS	32A	6h	3P+E (4pin)	●		surface mnt socket	M32
518.3257TS	32A	6h	3P+N+E (5pin)	●		surface mnt socket	M32

* Refrigerated container (Reefer plugs)



221.163...



247.169...



422.166...



452.166...

Eureka series 16A/32A - 90° inlets

- Insulation voltage: 690 VAC
- Protection degree: IP44 and IP67
- Operating temperature: -25 – +40°C (max operating temperature +60°C)
- Material: Thermoplastic
- Impact resistance: IK07 (0.5kg with a striking energy of 2J)
- Standards: IEC 6039-1 / EN 60309-3

type	rated current	(h) pos.	pin configuration	IP protection		description	flange size
				44/54	66/7/9		
Male plugs (90° cable inlet) 16A - 32A							
221.1633	16A	6h	2P+E (3pin)	●		90° ind male plug	sleeve
221.1636	16A	6h	3P+E (4pin)	●		90° ind male plug	sleeve
221.1637	16A	6h	3P+N+E (5pin)	●		90° ind male plug	sleeve
221.3233	32A	6h	2P+E (3pin)	●		90° ind male plug	sleeve
221.3236	32A	6h	3P+E (4pin)	●		90° ind male plug	sleeve
221.3237	32A	6h	3P+N+E (5pin)	●		90° ind male plug	sleeve
226.1633	16A	6h	2P+E (3pin)		●	90° ind male plug	gland
226.1636	16A	6h	3P+E (4pin)		●	90° ind male plug	gland
226.1637	16A	6h	3P+N+E (5pin)		●	90° ind male plug	gland
226.3233	32A	6h	2P+E (3pin)		●	90° ind male plug	gland
226.3236	32A	6h	P+E (4pin)		●	90° ind male plug	gland
226.3237	32A	6h	3P+N+E (5pin)		●	90° ind male plug	gland
Appliance inlets (90° inlet) 16A - 32A							
242.1693	16A	6h	2P+E (3pin)	●		90° appliance inlet	70 x 87
242.1696	16A	6h	3P+E (4pin)	●		90° appliance inlet	70 x 87
242.1697	16A	6h	3P+N+E (5pin)	●		90° appliance inlet	70 x 87
242.3293	32A	6h	2P+E (3pin)	●		90° appliance inlet	70 x 87
242.3296	32A	6h	3P+E (4pin)	●		90° appliance inlet	70 x 87
242.3297	32A	6h	3P+N+E (5pin)	●		90° appliance inlet	70 x 87
247.1693	16A	6h	2P+E (3pin)		●	90° appliance inlet	70 x 87
247.1696	16A	6h	3P+E (4pin)		●	90° appliance inlet	70 x 87
247.1697	16A	6h	3P+N+E (5pin)		●	90° appliance inlet	70 x 87
247.3293	32A	6h	2P+E (3pin)		●	90° appliance inlet	70 x 87
247.3296	32A	6h	3P+E (4pin)		●	90° appliance inlet	70 x 87
247.3297	32A	6h	3P+N+E (5pin)		●	90° appliance inlet	70 x 87
Sockets (90° outlet) 16A - 32A							
452.1663	16A	6h	2P+E (3pin)	●		90° female socket	70 x 87
452.1666	16A	6h	3P+E (4pin)	●		90° female socket	70 x 87
452.1667	16A	6h	3P+N+E (5pin)	●		90° female socket	70 x 87
452.3263	32A	6h	2P+E (3pin)	●		90° female socket	70 x 87
452.3266	32A	6h	3P+E (4pin)	●		90° female socket	70 x 87
452.3267	32A	6h	3P+N+E (5pin)	●		90° female socket	70 x 87
457.1663	16A	6h	2P+E (3pin)		●	90° female socket	70 x 87
457.1666	16A	6h	3P+E (4pin)		●	90° female socket	70 x 87
457.1667	16A	6h	3P+N+E (5pin)		●	90° female socket	70 x 87
457.3263	32A	6h	2P+E (3pin)		●	90° female socket	70 x 87
457.3266	32A	6h	3P+E (4pin)		●	90° female socket	70 x 87
457.3267	32A	6h	3P+N+E (5pin)		●	90° female socket	70 x 87
Container plugs and sockets 32A (IP67)							
• Refrigeration container (Reefer plugs and sockets)							
• Earth pin (3h) position							
218.32364	32A	3h	3P+E (4pin)			container straight male plug	
318.32464	32A	3h	3P+E (4pin)			container straight connector	
428.32664	32A	3h	3P+E (4pin)			p/mnt straight socket	75 x 75
418.32664	32A	3h	3P+E (4pin)			p/mnt angled socket	84 x 106
518.32564T	32A	3h	3P+E (4pin)			TOP surface mnt socket outlet	
505.32864	32A	3h	3P+E (4pin)			Omnia surf switch/socket outlet	
561.32864	32A	3h	3P+E (4pin)			Advance surf switch/socket outlet	



500.168...



505.328...



561.328...



561.328...

Industrial switched sockets (interlocked)

IEC 60309-1/-2

- Protection degree: IP44 and IP67 (non ageing elastomer seals)
- Operating temp: -25 – +40°C (max operating temperature +60°C)
- Material: Thermoplastic (RAL 7035)
- Mechanical interlock: Only operates with plug inserted - cannot be removed with switch "ON"

type	rated current	(h) pos.	pin configuration	IP protection 44/54 67/8/9	description
------	---------------	----------	-------------------	------------------------------	-------------

OMNIA series - Switched sockets (I-O) (interlocked)

- Surface mounting: (flush mountable with surface box removed)
- Impact resistance: IK08 (1.7kg with a striking energy of 2J)

OMNIA Series 16A - 32A

(H)125 x (W)136 x (D)85 mm

500.1683	16A	6h	2P+E (3pin)	●	surface switch socket outlet
500.1686	16A	6h	3P+E (4pin)	●	surface switch socket outlet
500.1687	16A	6h	3P+N+E (5pin)	●	surface switch socket outlet
500.3283	32A	6h	2P+E (3pin)	●	surface switch socket outlet
500.3286	32A	6h	3P+E (4pin)	●	surface switch socket outlet
500.3287	32A	6h	3P+N+E (5pin)	●	surface switch socket outlet
505.1683	16A	6h	2P+E (3pin)	●	surface switch socket outlet
505.1686	16A	6h	3P+E (4pin)	●	surface switch socket outlet
505.1687	16A	6h	3P+N+E (5pin)	●	surface switch socket outlet
505.3283	32A	6h	2P+E (3pin)	●	surface switch socket outlet
505.3286	32A	6h	3P+E (4pin)	●	surface switch socket outlet
505.32864*	32A	3h	3P+E (4pin)	●	surface switch socket outlet
505.3287	32A	6h	3P+N+E (5pin)	●	surface switch socket outlet

OMNIA Series 63A (rectangular shape)

(H)275 x (W)136 x (D)186 mm

505.6383	63A	6h	2P+E (3pin)	●	surface switch socket outlet
505.6386	63A	6h	3P+E (4pin)	●	surface switch socket outlet
505.6387	63A	6h	3P+N+E (5pin)	●	surface switch socket outlet

Accessories for above Omnia series switched sockets

572.0310	base	surface base housing for 125 x 136 mm 16/32A switch sockets
654.0120	blank	plain blank cover for above surface box 5720310
572.0120	6 way	6 module consumer insert and cover for box 5720310
409.0428	cover	IP56 Omnia cover accepts Evolution domestic sockets
572.0200	wall box	flush mounting wall box for Omnia 16/32A switch socket outlets
572.0220	frame	flush frame (IP55) for above flush mounting box 5720200

Advance 2 series - Industrial switch sockets (I-O) (interlocked)

- Impact resistance: IK07 (500g with a striking energy of 2J)

16A/32A - compact version

(H)240 x (W)106 x (D)129 mm

560.1683	16A	6h	2P+E (3pin)	●	surface switch socket outlet
560.1686	16A	6h	3P+E (4pin)	●	surface switch socket outlet
560.1687	16A	6h	3P+N+E (5pin)	●	surface switch socket outlet
560.3283	32A	6h	2P+E (3pin)	●	surface switch socket outlet
560.3286	32A	6h	3P+E (4pin)	●	surface switch socket outlet
560.3287	32A	6h	3P+N+E (5pin)	●	surface switch socket outlet
561.1683	16A	6h	2P+E (3pin)	●	surface switch socket outlet
561.1686	16A	6h	3P+E (4pin)	●	surface switch socket outlet
561.16866	16A	7h	3P+E (4pin)	●	surface switch socket outlet
561.1687	16A	6h	3P+N+E (5pin)	●	surface switch socket outlet
561.16876	16A	7h	3P+N+E (5pin)	●	surface switch socket outlet
561.3283	32A	6h	2P+E (3pin)	●	surface switch socket outlet
561.3286	32A	6h	3P+E (4pin)	●	surface switch socket outlet
561.32864*	32A	3h	3P+E (4pin)	●	surface switch socket outlet
561.32866	32A	7h	3P+E (4pin)	●	surface switch socket outlet
561.3287	32A	6h	3P+N+E (5pin)	●	surface switch socket outlet
561.32876	32A	7h	3P+N+E (5pin)	●	surface switch socket outlet

63A - large version

(H)390 x (W)136 x (D)166-207 mm

561.6383	63A	6h	2P+E (3pin)	●	surface switch socket outlet
561.6386	63A	6h	3P+E (4pin)	●	surface switch socket outlet
561.63866	63A	7h	3P+E (4pin)	●	surface switch socket outlet
561.6387	63A	6h	3P+N+E (5pin)	●	surface switch socket outlet
561.63876	63A	7h	3P+N+E (5pin)	●	surface switch socket outlet

125A - large version

(H)460 x (W)212 x (D)217 mm

548.12586	125A	6h	3P+E (4pin)	●	surface switch socket outlet
548.12587	125A	6h	3P+N+E (5pin)	●	surface switch socket outlet

* Refrigerated container (Reefer plugs)



568.168...



LED indication



503.638...

type	rated current	(h) pos.	pin configuration	IP protection	description
With interlocked switch and 6 way distribution board 16 - 32 - 63A					
• DIN rail facility for 6 x modular devices - MCB's, earth leakage, contactors					
16/32A - switched socket					(H)410 x (W)136 x (D)163 mm
568.1683	16A	6h ■	2P+E (3pin)	●	surface switch socket outlet
568.1686	16A	6h ■	3P+E (4pin)	●	surface switch socket outlet
568.1687	16A	6h ■	3P+N+E (5pin)	●	surface switch socket outlet
					(H)420 x (W)136 x (D)176 mm
568.3283	32A	6h ■	2P+E (3pin)	●	surface switch socket outlet
568.3286	32A	6h ■	3P+E (4pin)	●	surface switch socket outlet
568.3287	32A	6h ■	3P+N+E (5pin)	●	surface switch socket outlet
63A - switched socket					(H)438 x (W)136 (D)182 mm
568.6383	63A	6h ■	2P+E (3pin)	●	surface switch socket outlet
568.6386	63A	6h ■	3P+E (4pin)	●	surface switch socket outlet
568.6387	63A	6h ■	3P+N+E (5pin)	●	surface switch socket outlet
Advance-GRP "extra heavy duty" interlocked switch socket outlet 16 - 125A (O-II)					
• Material: Thermosetting (halogen free) RAL 7037					
• Self-extinguishing: GW test: 960°C - UL94 V0					
• Impact resistance: IK10 (5kg with a striking energy of 20J)					
• Ex classification: Atex code Ex II 2D					
• LED indication: Correct supply and all phases present					
16A/32A - extra heavy-duty					(H)260 x (W)130 x (D)170-185 mm
503.1683	16A	6h ■	2P+E (3pin)	●	heavy duty switch socket outlet
503.1686	16A	6h ■	3P+E (4pin)	●	heavy duty switch socket outlet
503.1687	16A	6h ■	3P+N+E (5pin)	●	heavy duty switch socket outlet
503.3283	32A	6h ■	2P+E (3pin)	●	heavy duty switch socket outlet
503.3286	32A	6h ■	3P+E (4pin)	●	heavy duty switch socket outlet
503.3287	32A	6h ■	3P+N+E (5pin)	●	heavy duty switch socket outlet
63A - extra heavy-duty					(H)380 x (W)170 x (D)225 mm
503.6386	63A	6h ■	3P+E (4pin)	●	heavy duty switch socket outlet
503.6387	63A	6h ■	3P+N+E (5pin)	●	heavy duty switch socket outlet
125A - extra heavy-duty					(H)575 x (W)280 x (D)253 mm
503.12586-01	125A	6h ■	3P+E (4pin)	●	heavy duty switch socket outlet
503.12587-01	125A	6h ■	3P+N+E (5pin)	●	heavy duty switch socket outlet



672.2012.1102



672.4032.1102



672.4316



672.1200



654.0420



654.0410

Domino series - Distribution boards (IP66)

- Protection degree: IP66
- Max. operating temperature: 60°C
- Material: Thermoplastic (RAL 7035)
- Standards: EN 62208 / EN 60670-24 / EN 61439-3
- Impact resistance: IK07 (500g with a striking energy of 2J)

type	no. DIN modules	description	dimensions (mm)		
			(H)	(W)	(D)

Domino series - Distribution boards

- Reversible hinged door (*hinged from left or right side*)
- Adjustable DIN rail depth (*can accept rail mounted MCCB's*)
- Knock-outs on all sides (*can be coupled to other enclosures using coupler glands*)
- Facility to accept earth and neutral terminals

672.2002	2	IP66 consumer unit / distribution board	135	76	102
672.2004	4	IP66 consumer unit / distribution board	190	112	106
672.2008	8	IP66 consumer unit / distribution board	190	184	106
672.2012.1102	12 (1 x 12)	IP66 consumer unit / distribution board	250	256	140
672.4024.1102	24 (2 x 12)	IP66 consumer unit / distribution board	400	256	140
672.2016.1102	16 (1 x 16)	IP66 consumer unit / distribution board	250	328	140
672.4032.1102	32 (2 x 16)	IP66 consumer unit / distribution board	400	328	140
672.5048.1102	48 (3 x 16)	IP66 consumer unit / distribution board	550	328	140

.1102 (*supplied with mounted earth and neutral terminals*)

Boards with additional blank component section (for mounting non modular devices)

672.3100	12 (1 x 12)	with blank section (H) 150 x (D) 115 mm	400	256	140
672.4116	16 (1 x 16)	with blank section (H) 150 x (D) 115 mm	400	328	140
672.5116	16 (1 x 16)	with blank section (H) 300 x (D) 115 mm	550	328	140

Boards with section to accommodate industrial sockets

type	no. DIN modules	sockets No.	flange size (mm)	dimensions (mm)		
				(H)	(W)	(D)
672.2300	8 (1 x 8)	board + 2 x 16A sockets	70 x 87	340	184	106
672.3300*	12 (1 x 12)	board + 2 x 16A sockets	70 x 87	400	256	140
672.3302	12 (1 x 12)	board + 1 x 63A sockets	100 x 110	400	256	140
672.4316*	16 (1 x 16)	board + 3 x 16A sockets	70 x 87	400	328	140
672.5616*	16 (1 x 16)	board + 6 x 16A sockets	70 x 87	550	328	140

To accommodate Omnia interlocked switch sockets

672.3200	12 (1 x 12)	board + 1 x 16/32A sw/socket	136 x 125	400	256	140
672.4216	16 (1 x 16)	board + 2 x 16/32A sw/socket	136 x 125	400	328	140
672.5316	16 (1 x 16)	2 x 16/32A + 1 x 63A sw/socket	136 x 125	550	328	140
672.5416	16 (1 x 16)	board + 4 x 16/32A sw/socket	136 x 125	550	328	140

Empty enclosures for Domino series boards

type	for boards	description	flange	(H)	(W)	(D)
------	------------	-------------	--------	-----	-----	-----

- Enclosures can be attached to boards (*or one another*) using coupler glands (*below*)

672.1101	12 way enclosure	with blank cover	—	150	256	115
672.1301*	12 way enclosure	2 x 16A sockets	70x87	150	256	115

* *With suitable adaption, can accommodate 32A socket (84x106 mm flange)*

672.1100	16 way enclosure	with blank cover	—	150	328	115
672.1300*	16 way enclosure	3 x 16A sockets	70x87	150	328	115
672.1200	16 way enclosure	2 x 16/32A sw/socket	136x125	150	328	115

Accessories for Domino boards

654.0365	4 way	5 way insulated terminal block for boards				(IP20)
654.0363	8 way	10 way insulated terminal block for boards				(IP20)
654.0360	12 - 48 way	additional 10 way insulated terminal block				(IP20)
654.0358	DIN rail mountable insulated terminal block		vertical	5x10 + 5x16 mm ²		
654.0359	DIN rail mountable insulated terminal block		horizontal	5x10 + 5x16 mm ³		
654.0400	4 module	blanking strip for boards		(sectionable ½ and 1 module)		
654.0410	1 module	rail mount dummy module		(assists heat dissipation)		
654.0420	½ module	rail mount dummy module		(assists heat dissipation)		

Coupler glands IP66 (to join two enclosures together)

805.3335	coupler gland PG21 for joining 12/24 way enclosures together	(ea)
805.3337	coupler gland PG36 for joining 16/32 way enclosures together	(ea)



(Excluding sockets & MCBs) MBOX2



(Excluding sockets & MCBs) MBOX3



(Excluding sockets & MCBs) MBOX5



610.3760



610.3700



606.3005-062

MBOX series - Distribution assemblies (IP66) (EN 60670-1 / EN 61439-3 / EN 61439-4)

MBOX panels are made of engineering resin with high mechanical sturdiness suitable for outdoor installations with high impact resistance and excellent dimensional stability at high temperatures. Numerous combinations of sockets ensure reliability to meet common installation requirements for construction sites, equipped areas, camping sites, harbours and outdoor areas in general.

- Incorporated fold-out carrying handle
- Wall, trestle, turret or pole mountable (*with additional accessories*)
- Incorporated emergency disconnect pushbutton RAL 7035
- Incorporated distribution board to accommodate modular devices MCBs, earth leakages

type	no. DIN modules	mountable accessories to be ordered separately	dimensions (mm)		
			(H)	(W)	(D)

MBOX series - Distribution assemblies

MBOX2 distribution assemblies (no front door)

- Supplied with 16 mm² 5 pole terminal box

656.0924-000	16 (2 x 8)	4 x 16/32A	Omnia industrial switch sockets	365	332	290
656.0926-000	16 (2 x 8)	6 x 16/32A	Optima industrial socket outlets	365	332	290

MBOX3 distribution assemblies (supplied with door for socket compartment)

- Supplied with door for socket compartment
- Incorporates extremely low consumption LED light connected to a daylight sensor (*for improved visibility at night or in areas with poor light*)

657.0936-000	39 (3 x 13)	6 x 16/32A	Omnia industrial switch sockets	520	465	380
657.0938-000	39 (3 x 13)	9 x 16/32A	Optima industrial socket outlets	520	465	380

MBOX5 distribution assemblies (supplied with door for socket compartment)

- Supplied with door for socket compartment
- Internal frame to accept 4 x Omnia switch sockets with facilities to mount an additional 8 surface
- Supplied with incoming terminal blocks (5 x 16 mm² + 5 x 35 mm²)
- Incorporates extremely low consumption LED light connected to a daylight sensor (*for improved visibility at night or in areas with poor light*)

658.0950-000	52 (4 x 13)	12 x 16/32A	Omnia industrial switch sockets	670	775	400
--------------	-------------	-------------	---------------------------------	-----	-----	-----

Accessories for MBOX distribution assemblies for enclosure

654.0051	cable support kit (<i>to wind feeder cable on rear of enclosure</i>)			MBOX2
654.0024	wall mounting bracket for enclosures			MBOX2/3/5
655.46090	pole mounting bracket for enclosures			MBOX2
655.32090	pole mounting bracket for enclosures			MBOX3/5
657.0121	trestle metal support trestle for enclosures			MBOX3/5

Adapto series adaptors (*from industrial IEC309 to multi and domestic sockets*)

type	from ind. socket		to sockets	description
610.3700	16A	2P+E	2 x 16A	Italian socket
610.3720	16A	2P+E	1 x 16A	German (Schuko)
610.3760	16A	2P+E	1 x 16A	South African socket
600.1623	16A	2P+E	2 x 16A 2P+E	multi-way adaptor
600.1626	16A	3P+E	2 x 16A 3P+E	multi-way adaptor
600.1629	16A	3P+N+E	1 x 2P+E/1x 3P+E	multi-way adaptor
606.3005-062	16A	2P+E	3 x 16A 2P+E	appliance inlets
606.3005-063	16A	2P+E	3 x 16A 3P+E	appliance inlets

Covers to accommodate domestic sockets

- Replaces standard industrial sockets and Omnia switch sockets with domestic sockets

type	IP rating	description	ind socket flange
570.6428	IP66	cover with South African 16A domestic socket	70 x 87
409.0428	IP56	Omnia cover with S A 16A domestic socket	125 x 136
570.5052	IP66	cover accepts Evolution domestic sockets	70 x 87
654.0122	IP66	Omnia cover accepts Evolution domestic sockets	125 x 136

* See page I-6 for available clip-in domestic socket modules for above covers



136.5121-303



136.5122-303



136.5123-303



136.5123-414



101.6303.G



101.6414.G



137.5012



137.5022



137.6111

Unibox series - Surface mounting IP55

- Housing: Thermoplastic (RAL 7035) (grey)
- Impact resistance: IK06 (500g with a striking energy of 1J)
- Max. temperature: +60°C
- Standards: EN 60670-1

type	amps	poles	description	dimensions (mm)		
				(H)	(W)	(D)

Unibox series - Surface mounting (IP55)

1 gang surface mount switches

136.5121-303	16A	1P	1-way surface mount switch	82	68	66
136.5121-302	20A	2P	1-way surface mount switch	82	68	66
136.5121-323	16A	1P	2-way surface mount switch	82	68	66
136.5121-333	16A	1P	bell-push (momentary action)	82	68	66

2 gang surface mount switches

136.5122-303	16A	2P	2 x 1-pole surface mount switch	82	68	66
136.5122-414	15A	2P+E	2-pole + earth socket only	82	68	66

3 gang surface mount switches

136.5123-303	16A	3P	3 x 1-pole surface mount switch	82	98	66
--------------	-----	----	---------------------------------	----	----	----

Surface mount switch socket

136.5123-414	15A	2P+E	switch socket outlet	82	98	66
--------------	-----	------	----------------------	----	----	----

Accessories for Unibox series

136.5121	1 gang	surface mount empty housing only (IP55)	82	68	66
136.5122	2 gang	surface mount empty housing only (IP55)	82	68	66
136.5123	3 gang	surface mount empty housing only (IP55)	82	98	66
136.001	-	external mount brackets for surface boxes			(10 pcs)
570.5052*	2 gang	panel mount housing for switches or sockets	82	68	-
570.6001*	2 gang	panel mnt housing (IP66 with plug inserted)	107	84	-
136.5023	3 gang	flush mnt housing for switches or sockets	82	98	-
875.4303	3 gang	wall box for flush mount empty housing	82	98	-

* Fits into housing for industrial sockets with 70 x 87 mm flange

Evolution series - Switches and sockets for above boxes

101.6303.G	16 A	1-pole	on/off switch for housings	(1 module)
101.6311.G	16 A	2-pole	changeover switch (I-O-II)	(1 module)
101.6403.G	16A	2P+E	Italian socket for housings	(1 module)
101.6414.G	15A	2P+E	SA socket for housings	(2 module)
101.6407.G	16A	2P+E	German socket for housings	(2 module)

DIN rail mount support for Evolution switches and sockets

654.0091	support	rail mnt support for above switches/sockets	(1 module)
654.0092	support	rail mnt support for above switches/sockets	(2 module)

Protecta series - Switches and sockets (IP66)

- Housing: Thermoplastic (halogen free) RAL 7035 (grey)
- Mounting: Surface mount (can be flush mounted)
- Max temperature: +60°C
- Glow wire test: 850°C / IK07

1 gang surface mount switches

137.5012	20A	1P	surface mount switch	95	95	-
137.5462	20A	2P	surface mount switch	95	95	-
137.5212	20A	1P	2 way surface mnt switch	95	95	-
137.5311P	10A	1P	bell-push(momentary action)	95	95	-

2 gang surface mount switches

137.5022	20A	2P	surface mount switch	95	95	-
----------	-----	----	----------------------	----	----	---

Switch socket outlet

137.6111	15A	2P+E	2 p + earth switch socket outlet	115	115	-
----------	-----	------	----------------------------------	-----	-----	---

Accessories for above Protecta switches

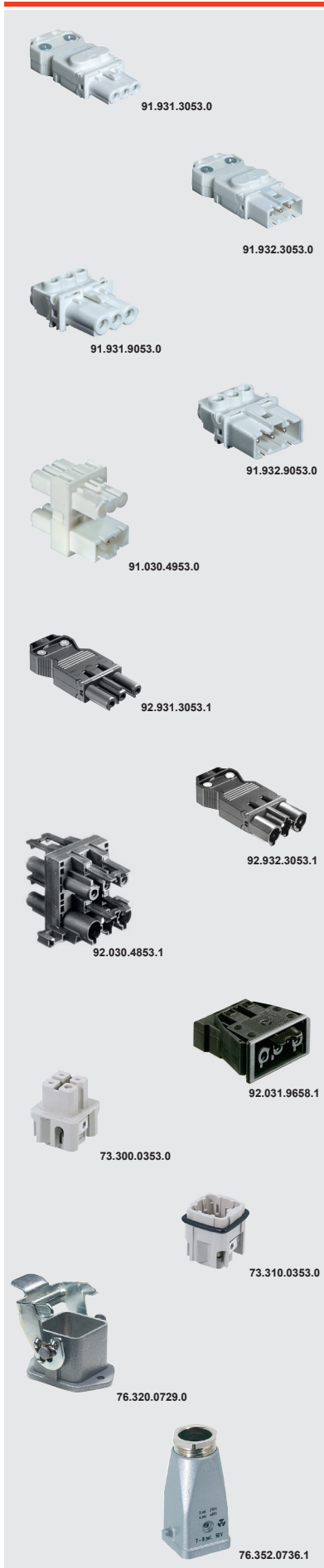
137.101	surface	surface mount back box for above switches	95	95	-
137.141	pole	pole mount back box for above switches	95	95	-
137.002	cover	IP66 cover accepts 2 x evolution (modules)	-	-	-
137.121	flush	flush mount frame kit for above switches	95	95	-
137.123	flush	flush mount frame kit for above sockets	115	115	-



RST connectors are an ideal solution to providing pluggable connections to products able to withstand severe conditions, the connectors easily replace conventional cable glands providing a flexible, pluggable solution.

- Rapid mounting through ease of handling
- UV-resistant (*Polymide - Halogen free*)
- Cross-sections up to 6 mm²
- Protection degree: IP65, IP66, IP67, IP68, IP69K
- Colour: Black

type	current (A)	No. poles	for cable (Ø mm)	wire (mm ²)	description	panel hole Ø
RST MINI Twistlock technology 250V						
RST 16i3	16A	3 pole				
46.031.4553.1	16A	3 pole	5 - 9.5	.25 - 1.5	in-line female connector	-
46.032.4553.1	16A	3 pole	5 - 9.5	.25 - 1.5	in-line male connector	-
46.031.5053.1	16A	3 pole	-	.25 - 1.5	panel mnt female connector	M16
46.032.5053.1	16A	3 pole	-	.25 - 1.5	panel mount male connector	M16
46.030.1253.1	16A	3 pole	-	-	1in / 2out distribution block	-
Z6.561.7253.1	16A	3 pole	protection cover for above 3 pole female connectors		-	-
Z6.561.6953.1	16A	3 pole	protection cover for above 3 pole male connectors		-	-
RST 16i5	16A	5 pole				
46.051.4553.1	16A	5 pole	5 - 9.5	.25 - 1.5	in-line female connector	-
46.052.4553.1	16A	5 pole	5 - 9.5	.25 - 1.5	in-line male connector	-
46.051.5053.1	16A	5 pole	-	.25 - 2.5	panel mnt female connector	M20
46.052.5053.1	16A	5 pole	-	.25 - 2.5	panel mount male connector	M20
46.050.1253.1	16A	5 pole	-	-	1in / 2out distribution block	-
06.562.5853.1	16A	3/5 pole	mounting base for above 3/5 pole distribution blocks		-	-
Z6.561.7153.1	16A	5 pole	protection cover for above 5 pole female connectors		-	-
Z6.561.6853.1	16A	5 pole	protection cover for above 5 pole male connectors		-	-
RST 20i3 20A 3 pole 250V						
96.031.4053.1	20A	3 pole	6 - 10	.75 - 6.0	in-line female connector	-
96.031.4153.1	20A	3 pole	10 - 14	.75 - 6.0	in-line female connector	-
96.032.4053.1	20A	3 pole	6 - 10	.75 - 6.0	in-line male connector	-
96.032.4153.1	20A	3 pole	10 - 14	.75 - 6.0	in-line male connector	-
96.031.5053.1	20A	3 pole	-	.75 - 6.0	panel mnt female connector	M25
96.032.5053.1	20A	3 pole	-	.75 - 6.0	panel mount male connector	M25
RST 20i5	20A	5 pole				
96.051.4153.1	20A	5 pole	10 - 14	.75 - 4.0	in-line female connector	-
96.052.4153.1	20A	5 pole	10 - 14	.75 - 4.0	in-line male connector	-
96.051.4353.1	20A	5 pole	10 - 14	.75 - 1.5	female splitter connector	-
96.051.5053.1	20A	5 pole	-	.75 - 4.0	panel mnt female connector	M25
96.052.5053.1	20A	5 pole	-	.75 - 4.0	panel mount male connector	M25
96.031.4253.1	20A	3/5 pole	6 - 10	.75 - 2.5	female splitter connector	-
96.031.4353.1	20A	3/5 pole	10 - 14	.75 - 2.5	female splitter connector	-
01.006.1553.1	20A	3/5 pole	mounting plate for 20A 3/5 pole splitter connectors		-	-
RST 25i3 32A (using 6 mm² cable) PV applications						
96.031.4554.3	32A	3 pole	10 - 14	.75 - 6.0	in-line female connector	-
96.032.4554.3	32A	3 pole	10 - 14	.75 - 6.0	in-line male connector	-
96.031.5054.3	32A	3 pole	-	.75 - 6.0	panel mnt female connector	M25
96.032.5054.3	32A	3 pole	-	.75 - 6.0	panel mount male connector	M25
RST 50i5 50A 5 pole power series						
97.051.4053.1	50A	5 pole	15 - 25	4.0 - 16.0	in-line female connector	M32
97.052.4053.1	50A	5 pole	15 - 25	4.0 - 16.0	in-line male connector	M32
97.051.5553.1	50A	5 pole	-	4.0 - 16.0	panel mnt female connector	M32
97.052.5553.1	50A	5 pole	-	4.0 - 16.0	panel mount male connector	M32
Accessories for RST20/25/50 connectors						
05.564.8653.1	20/32A	-	manual disconnect tool (<i>easy release button</i>)		-	-
05.568.8853.1	20/32A	-	spacer ring (<i>manually actuated</i>) for M25 connectors		M25	-
99.416.6205.2	20/32A	3 pole	protection cover for 20/32A 3 pole female connector		-	-
99.414.6205.2	20/32A	3 pole	protection cover for 20/32A 3 pole male connector		-	-
99.532.0000.7	20/32A	5 pole	protection cover for 20/32A 5 pole female connector		-	-
99.530.0000.7	20/32A	5 pole	protection cover for 20/32A 5 pole male connector		-	-
Z5.567.5653.0	50A	cover	protection cover for 50A male or female connectors		-	-



GST multipole connectors

Rated voltage: 250V Rated current: 16A
 Protection degree: IP20 Colour: White (black available on request)

• Quick, easy and reliable connection technology with Integrated locking device

type	current (A)	No. poles	for cable (Ø mm)	wire (mm ²)	description	panel hole Ø
------	-------------	-----------	------------------	-------------------------	-------------	--------------

GST 15i3 (Gesis mini) connectors 16A/250V

In-line connectors (with strain relief)		screw connection			
91.921.3053.0	16A	2 pole	5.5 - 8.5	0.5 - 1.5	female in-line connector
91.922.3053.0	16A	2 pole	5.5 - 8.5	0.5 - 1.5	male in-line connector
91.931.3053.0	16A	3 pole	5.5 - 8.5	0.5 - 1.5	female in-line connector
91.932.3053.0	16A	3 pole	5.5 - 8.5	0.5 - 1.5	male in-line connector
91.931.9053.0	16A	3 pole	–	0.5 - 1.5	flush female p/mnt connector
91.931.9153.0	16A	3 pole	–	0.5 - 1.6	protruding female p/mnt conn.
91.932.9053.0	16A	3 pole	–	0.5 - 1.5	flush male p/mnt connector
91.932.9153.0	16A	3 pole	–	0.5 - 1.6	protruding male p/mnt conn.

GST 18i3 (Gesis) connectors 16A/250V

In-line connectors (with strain relief)		screw connection			
92.931.3053.0	16A	3 pole	6.5 - 10.5	0.75 - 2.5	female in-line connector
92.932.3053.0	16A	3 pole	6.5 - 10.5	0.75 - 2.5	male in-line connector

Panel mounting (snap-in) spring-loaded screwless connection

92.031.9658.0	16A	3 pole	–	0.75 - 2.5	female panel mount connector
92.032.9658.0	16A	3 pole	–	0.75 - 2.5	male panel mount connector

Accessories for GST connectors

91.030.6053.0	16A	3 pole			1 in / 2 out distribution unit for GST15i connectors
91.030.4953.0	16A	3 pole			1 in / 3 out distribution unit for GST15i connectors
91.030.5853.0	16A	3 pole			U-type intermediate coupling for GST 15i connectors
91.030.5953.0	16A	3 pole			in-line intermediate coupling for GST 15i connectors
92.030.4853.0	16A	3 pole			1 in / 3 out distribution unit for GST18i connectors
92.030.5958.0	16A	3 pole			in-line intermediate coupling for GST 18i connectors
05.587.3156.0	lock	–			locking device for in-line connectors
05.561.3653.0	cover	–			protection cover for GST18i female connectors

Revos MINI - industrial multipole connectors

Protection degree: IP 65 (when used with appropriate cable gland)

type	current (A)	No. poles	rated voltage	connect type	cable inlet	description
------	-------------	-----------	---------------	--------------	-------------	-------------

• Set is made up with - contact inserts (male and female) - base - hood

Revos MINI 10A/400V

Contact inserts		Screw connection - (cables 0.5 - 2.5 mm ²)				
73.310.0353.0	10A	3p + ⊥	400 V	screw	–	male insert - screw terminal
73.310.0453.0	10A	4p + ⊥	400 V	screw	–	male insert - screw terminal
73.300.0353.0	10A	3p + ⊥	400 V	screw	–	female insert - screw terminal
73.300.0453.0	10A	4p + ⊥	400 V	screw	–	female insert - screw terminal

Crimp connection - (crimp contacts to be ordered separately)

73.710.0753.0	10A	7p + ⊥	250 V	crimp	–	male insert - for crimp pins
73.710.0853.0	10A	8 pole	50 V	crimp	–	male insert - for crimp pins
05.544.1029.0	10A	–	250 V	crimp	.75 - 1.5 mm ²	male crimp contact pins
73.700.0753.0	10A	7p + ⊥	250 V	crimp	–	female insert - for crimp pins
73.700.0853.0	10A	8 pole	50 V	crimp	–	female insert - for crimp pins
02.124.1029.0	10A	–	250 V	crimp	.75 - 1.5 mm ²	female crimp contact pins

Bases

		with locking lever for hood connection				
76.320.0729.0	metal	3/4/7/8		open	straight	base for contact inserts
76.321.0729.0	metal	3/4/7/8		open	90°	angled base for cont. inserts
76.320.0753.0	plastic	3/4/7/8		open	straight	base for contact inserts
76.321.0753.0	plastic	3/4/7/8		open	90°	angled base for cont. inserts

Hoods

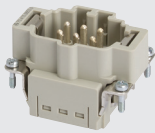
		with threaded collar to accept M20 cable glands				
76.352.0736.1	metal	3/4/7/8		M20	straight	hood for contact inserts
76.350.0736.1	metal	3/4/7/8		M20	90°	angled hood for cont. inserts
76.352.0760.1	plastic	3/4/7/8		M20	straight	hood for contact inserts
76.350.0760.1	plastic	3/4/7/8		M20	90°	angled hood for cont. inserts



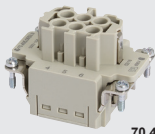
70.310.1040.0



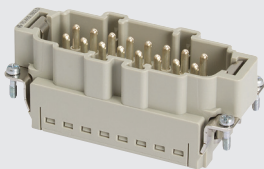
70.300.1040.0



70.415.0653.0



70.405.0653.0



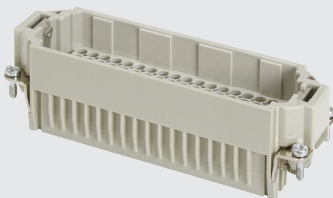
70.415.1653.0



70.405.1653.0



73.810.2453.0



73.810.0853.0

Revos BASIC - Industrial multipole connectors

Heavy duty connectors for use in tough environment conditions. Used in the automotive industry, packaging, instrumentation, control and automation equipment. They permit simple, time-saving installation of machinery and equipment, providing effective protection against mechanical impact, water and dust entry.

- Rated voltage: 690V
- Rated current: 10/16A
- Protection degree: *Supplied without gland (IP65 when used with appropriate cable gland)*

type	current (A)	No. poles	rated voltage	connect type	cable inlet	size	description
------	-------------	-----------	---------------	--------------	-------------	------	-------------

Contact inserts Fit into all revos bases and hoods to make up a complete connector.

Revos BASIC Standard contact inserts with screw termination - 6/10/16/24/32/48 pole + earth

- Connector set is made up with - contact inserts (*male and female*) - base - hood

Screw terminal (<i>with wire protection</i>)	<i>(for cables 0.5 - 2.5 mm²)</i>						
70.310.0640.0	16A	6p+ $\frac{1}{2}$	690V	screw	-	6	male insert - screw term.
70.310.1040.0	16A	10p+ $\frac{1}{2}$	690V	screw	-	10	male insert - screw term.
70.310.1640.0	16A	16p+ $\frac{1}{2}$	690V	screw	-	16	male insert - screw term.
70.310.2440.0	16A	24p+ $\frac{1}{2}$	690V	screw	-	24	male insert - screw term.
70.310.3253.0	16A	32p+ $\frac{1}{2}$	690V	screw	-	32	male insert - screw term.
70.310.4840.0	16A	48p+ $\frac{1}{2}$	690V	screw	-	48	male insert - screw term.
70.300.0640.0	16A	6p+ $\frac{1}{2}$	690V	screw	-	6	female insert - screw term.
70.300.1040.0	16A	10p+ $\frac{1}{2}$	690V	screw	-	10	female insert - screw term.
70.300.1640.0	16A	16p+ $\frac{1}{2}$	690V	screw	-	16	female insert - screw term.
70.300.2440.0	16A	24p+ $\frac{1}{2}$	690V	screw	-	24	female insert - screw term.
70.300.3253.0	16A	32p+ $\frac{1}{2}$	690V	screw	-	32	female insert - screw term.
70.300.4840.0	16A	48p+ $\frac{1}{2}$	690V	screw	-	48	female insert - screw term.

Push-in termination contact inserts

New push-in technology allows flexible conductors with ferrules to be simply and quickly connected without the use of tools. Simply push-in the wire conductor for a high contact quality, reliable, gas-tight, vibration proof connection.

- Extremely quick connection time - (*cables are simply withdrawn by pressing a release button*)

70.415.0653.0	16A	6p+ $\frac{1}{2}$	690V	push-in	-	6	male insert - push-in term.
70.415.1053.0	16A	10p+ $\frac{1}{2}$	690V	push-in	-	10	male insert - push-in term.
70.415.1653.0	16A	16p+ $\frac{1}{2}$	690V	push-in	-	16	male insert - push-in term.
70.415.2453.0	16A	24p+ $\frac{1}{2}$	690V	push-in	-	24	male insert - push-in term.
70.405.0653.0	16A	6p+ $\frac{1}{2}$	690V	push-in	-	6	female insert - push-in term.
70.405.1053.0	16A	10p+ $\frac{1}{2}$	690V	push-in	-	10	female insert - push-in term.
70.405.1653.0	16A	16p+ $\frac{1}{2}$	690V	push-in	-	16	female insert - push-in term.
70.405.2453.0	16A	24p+ $\frac{1}{2}$	690V	push-in	-	24	female insert - push-in term.

Revos DD High density contact inserts for crimp contacts - 24/42/72/108 poles

High contact density in the most compact housing. Connection is made with proven turned crimp contacts.

- Crimp connection - (*crimp contact pins to be ordered separately - see below*)
- Connector set is made up with - contact inserts and crimp contact pins (*male and female*) - base - hood

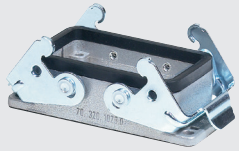
73.810.2453.0	10A	24p+ $\frac{1}{2}$	250V	crimp	-	6	male insert - for crimp pins
73.810.4253.0	10A	42p+ $\frac{1}{2}$	250V	crimp	-	10	male insert - for crimp pins
73.810.7253.0	10A	72p+ $\frac{1}{2}$	250V	crimp	-	16	male insert - for crimp pins
73.810.0853.0	10A	108p+ $\frac{1}{2}$	250V	crimp	-	24	male insert - for crimp pins
73.800.2453.0	10A	24p+ $\frac{1}{2}$	250V	crimp	-	6	female insert - for crimp pins
73.800.4253.0	10A	42p+ $\frac{1}{2}$	250V	crimp	-	10	female insert - for crimp pins
73.800.7253.0	10A	72p+ $\frac{1}{2}$	250V	crimp	-	16	female insert - for crimp pins
73.800.0853.0	10A	108p+ $\frac{1}{2}$	250V	crimp	-	24	female insert - for crimp pins

Crimp contacts for Revos DD contact inserts (*cables 0.75 - 1 mm²*)

05.544.4329.8	10A	-	250 V	0.75 - 1 mm ²	male crimp contact pins
02.125.4329.8	10A	-	250 V	0.75 - 1 mm ²	female crimp contact pins
05.544.4429.8	10A	-	250 V	1.5 mm ²	male crimp contact pins
02.125.4429.8	10A	-	250 V	1.5 mm ²	female crimp contact pins

Accessories for contact inserts

95.101.0800.0	tool	-	-	crimp	-	crimping tool for crimp contact pins
05.502.2100.0	die	-	-	crimp	-	die set for crimping contact pins
05.502.3100.0	pos.	-	-	crimp	-	contact pin positioner for crimping tool
05.502.0710.0	tool	-	-	-	-	extraction tool for removing crimp contact pins from contact inserts



70.320.1028.0



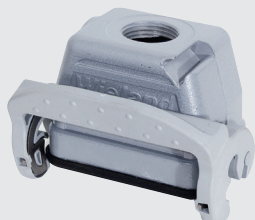
70.331.1035.1



70.350.1035.1
(excluding gland)



70.352.1035.1
(excluding gland)



70.372.0635.1

continued... Revos BASIC

- Set is made up with - contact inserts (*male and female*) - base - hood

type	locking lever	gland entry	cable inlet	size	description
Bases (housings)					<i>(diecast aluminium)</i>
Panel mount (open bottom base - no cover)					
Single locking lever					
70.320.0628.0	single	open	straight	6	bulkhead mounting base
71.320.1028.0	single	open	straight	10	bulkhead mounting base
71.320.1628.0	single	open	straight	16	bulkhead mounting base
71.320.2428.0	single	open	straight	24	bulkhead mounting base
70.320.4828.0	single	open	straight	48	bulkhead mounting base
Double locking lever					
70.320.1028.0	double	open	straight	10	bulkhead mounting base
70.320.1628.0	double	open	straight	16	bulkhead mounting base
70.320.2428.0	double	open	straight	24	bulkhead mounting base
70.320.3228.0	double	open	straight	32	bulkhead mounting base
Surface mount (closed bottom base)			metric threaded side cable gland entry		
Single locking lever					
70.331.0635.1	single	M20	side	6	side entry surface mount base
71.331.1035.1	single	M20	side	10	side entry surface mount base
71.331.1635.1	single	M25	side	16	side entry surface mount base
71.331.2435.1	single	M25	side	24	side entry surface mount base
70.344.4835.1	single	M40	side	48	side entry surface mount base
Double locking lever					
70.331.1035.1	double	M20	side	10	side entry surface mount base
70.331.1635.1	double	M25	side	16	side entry surface mount base
70.331.2435.1	double	M25	side	24	side entry surface mount base
Hoods (with studs to receive locking lever on bases)					<i>(diecast aluminium)</i>
Lateral cable entry (side entry)			metric threaded cable gland entry		
Single locking lever					
70.350.0635.1	single	M20	side	6	lateral cable gland entry hood
71.350.1035.1	single	M20	side	10	lateral cable gland entry hood
71.350.1635.1	single	M25	side	16	lateral cable gland entry hood
71.350.2435.1	single	M25	side	24	lateral cable gland entry hood
70.350.4835.1	single	M32	side	48	lateral cable gland entry hood
Double locking lever					
70.350.1035.1	double	M20	side	10	lateral cable gland entry hood
70.350.1635.1	double	M25	side	16	lateral cable gland entry hood
70.350.2435.1	double	M25	side	24	lateral cable gland entry hood
70.350.3235.1	double	M32	side	32	lateral cable gland entry hood
Top cable entry			metric threaded cable gland entry		
Single locking lever					
70.352.0635.1	single	M20	top	6	top cable gland entry hood
71.352.1035.1	single	M20	top	10	top cable gland entry hood
71.352.1635.1	single	M25	top	16	top cable gland entry hood
71.352.2435.1	single	M25	top	24	top cable gland entry hood
70.352.4835.1	single	M32	top	48	top cable gland entry hood
Double locking lever					
70.352.1035.1	double	M20	top	10	top cable gland entry hood
70.352.1635.1	double	M25	top	16	top cable gland entry hood
70.352.2435.1	double	M25	top	24	top cable gland entry hood
70.352.3235.1	double	M32	top	32	top cable gland entry hood
With locking levers (for in-line cable-to-cable connection)					
70.372.0635.1	single	M20	top	6	locking levers for cable to cable
71.372.1035.1	single	M20	top	10	locking levers for cable to cable
71.372.1635.1	single	M25	top	16	locking levers for cable to cable
71.372.2435.1	single	M25	top	24	locking levers for cable to cable



07.417.6753.0



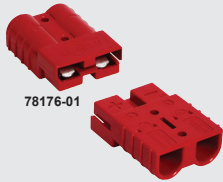
07.409.7356.0



Z7.428.1453.0

Protective covers for Revos housings

type	size	locking lever	for	gasket	description
Covers without locking levers for bases					
07.417.6753.0	mini	single	male	no	protection cover for bases
07.409.7056.0	6	single	base	no	protection cover for bases
07.428.5553.0	10	single	base	no	protection cover for bases
07.428.5653.0	16	single	base	no	protection cover for bases
07.428.5753.0	24	single	base	no	protection cover for bases
07.409.7156.0	10	double	base	no	protection cover for bases
07.409.7256.0	16	double	base	no	protection cover for bases
07.409.7356.0	24	double	base	no	protection cover for bases
Z7.419.6228.0	32	double	base	no	protection cover for bases
Covers with locking levers for hoods					
07.417.6853.0	mini	single	female	yes	protection cover for hoods
Z7.428.1153.0	6	single	hood	yes	protection cover for hoods
Z7.428.5553.0	10	single	hood	yes	protection cover for hoods
Z7.428.5653.0	16	single	hood	yes	protection cover for hoods
Z7.428.5753.0	24	single	hood	yes	protection cover for hoods
Z7.428.1253.0	10	double	hood	yes	protection cover for hoods
Z7.428.1353.0	16	double	hood	yes	protection cover for hoods
Z7.428.1453.0	24	double	hood	yes	protection cover for hoods
Z7.419.6128.0	32	double	hood	yes	protection cover for hoods



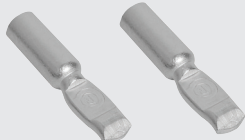
78176-01



78220-01



78299-00

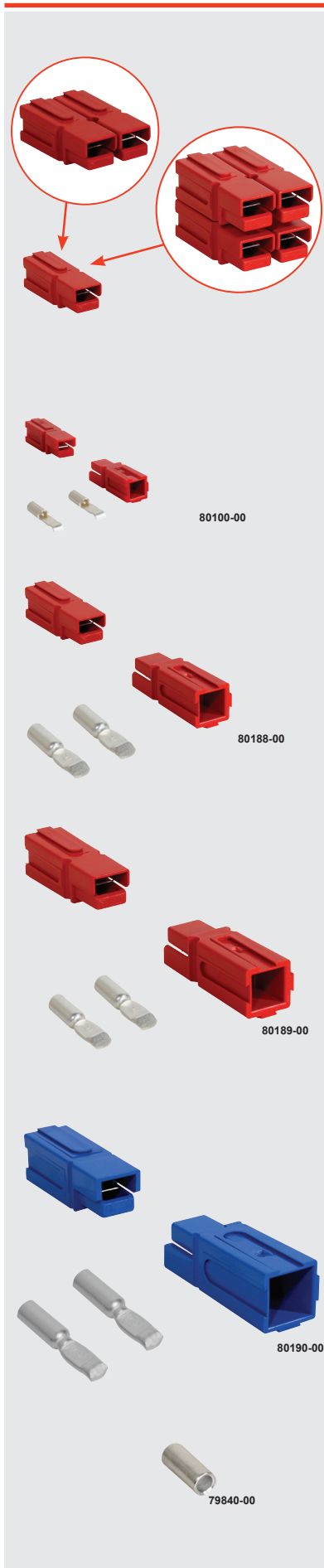


REMA® flat blade contact connectors offer a cost effective, quick-disconnect DC power connector solution. Available in different colours used to differentiate the voltage types, ensuring compatibility of properly configured mating connectors according to their respective voltage.

- Housing constructed of glass fibre reinforced material for extreme durability and resistance to battery acid
- Genderless housing design (*same unit reversed plugs into opposite*)
- REMA® engineered contacts made of high grade electrolyte copper, silver plated for corrosion protection
- Different contacts with sizes epitomised for metric and AWG cable dimensions
- CE and UL 1977 certified component meets or exceeds EN 1175-1 industry standards
- In compliance with machinery directive 2006/42 EG and therefore with "CE" marking
- Accepts REMA® strain relief clamps and handles for easy intuitive assembly

type	current (A)	colour	cable connection		description
			AWG	eq. mm ²	
SR 50 50A connector (H) 48 x (W) 36.5 x (D) 15.9 mm					
78176-01	50A	red	AWG 8	10 mm ²	heavy duty 2 pole connector
78184-00	50A	red	AWG 6	16 mm ²	heavy duty 2 pole connector
78180-02	50A	grey	AWG 8	10 mm ²	heavy duty 2 pole connector
78180-00	50A	grey	AWG 6	16 mm ²	heavy duty 2 pole connector
78181-05	50A	black	AWG 8	10 mm ²	heavy duty 2 pole connector
78181-00	50A	black	AWG 6	16 mm ²	heavy duty 2 pole connector
SR 175 175A connector (H) 79.4 x (W) 55.6 x (D) 25.4 mm					
78230-00	175A	yellow	AWG 4	25 mm ²	heavy duty 2 pole connector
78231-00	175A	yellow	AWG 2	35 mm ²	heavy duty 2 pole connector
78232-00	175A	yellow	AWG 0	50 mm ²	heavy duty 2 pole connector
78234-00	175A	red	AWG 4	25 mm ²	heavy duty 2 pole connector
78235-00	175A	red	AWG 2	35 mm ²	heavy duty 2 pole connector
78236-00	175A	red	AWG 0	50 mm ²	heavy duty 2 pole connector
78220-01	175A	grey	AWG 4	25 mm ²	heavy duty 2 pole connector
78220-02	175A	grey	AWG 2	35 mm ²	heavy duty 2 pole connector
78220-00	175A	grey	AWG 0	50 mm ²	heavy duty 2 pole connector
78224-01	175A	blue	AWG 4	25 mm ²	heavy duty 2 pole connector
78224-02	175A	blue	AWG 2	35 mm ²	heavy duty 2 pole connector
78224-00	175A	blue	AWG 0	50 mm ²	heavy duty 2 pole connector
Accessories for SR 175 (above)					
78290-00	-	grey	-	-	handle for SR 175 connectors
78291-00	-	red	-	-	handle for SR 175 connectors
78010-00	-	grey	-	-	cable clamp for SR 175
SR 350 350A Connector (H) 108 x (W) 69.8 x (D) 33.3 mm					
78311-00	350A	yellow	AWG 0	50 mm ²	heavy duty 2 pole connector
78312-00	350A	yellow	AWG 00	70 mm ²	heavy duty 2 pole connector
78313-00	350A	yellow	AWG 000	95 mm ²	heavy duty 2 pole connector
78307-00	350A	red	AWG 0	50 mm ²	heavy duty 2 pole connector
78308-00	350A	red	AWG 00	70 mm ²	heavy duty 2 pole connector
78309-00	350A	red	AWG 000	95 mm ²	heavy duty 2 pole connector
78299-00	350A	grey	AWG 0	50 mm ²	heavy duty 2 pole connector
78300-00	350A	grey	AWG 00	70 mm ²	heavy duty 2 pole connector
78301-00	350A	grey	AWG 000	95 mm ²	heavy duty 2 pole connector
78303-00	350A	blue	AWG 0	50 mm ²	heavy duty 2 pole connector
78304-00	350A	blue	AWG 00	70 mm ²	heavy duty 2 pole connector
78304-01	350A	blue	AWG 000	95 mm ²	heavy duty 2 pole connector
Accessories for SR350 (above)					
78297-00	-	grey	-	-	handle for SR 350 connectors
78298-00	-	red	-	-	handle for SR 350 connectors
78011-00	-	grey	-	-	cable clamp for SR 350
Reduction bushings			from	to	
79840-00	reduction bushing		AWG 6	6 mm ²	cable reducing bushing
79844-00	reduction bushing		AWG 2	16 mm ²	cable reducing bushing
79846-00	reduction bushing		AWG 0	25 mm ²	cable reducing bushing
79847-00	reduction bushing		AWG 0	35 mm ²	cable reducing bushing

Recommended colour voltage coding:
 Yellow: 12V - red: 24V - grey: 36V - blue: 48V



REMA® flat blade contact connectors offer a cost effective, quick-disconnect power connector solution. Available in different colours used to differentiate the voltage types, ensuring compatibility of properly configured mating connectors according to their respective voltage.

- Interlocking facility permitting multi-pole connections (2P, 3P, 4P..) in a flat horizontal or square format
- Constructed of glass fibre reinforced material for extreme durability and resistance to battery acid
- Genderless housing design (*same unit reversed plugs into opposite*)
- REMA® engineered contacts made of high grade electrolyte copper, silver plated for corrosion protection
- Different contacts with sizes optimised for metric and AWG cable dimensions
- CE and UL 1977 certified component meets or exceeds EN 1175-1 industry standards
- In compliance with machinery directive 2006/42 EG and therefore with "CE" marking

type	current (A)	colour	cable connection		description	pack qty
			AWG	eq. mm ²		
MC30 (H) 41.3 x (W) 7.9 x (D) 7.9 mm						
80100-00	30A	red	AWG 12	2.5/4 mm ²	single pole connector	100
80100-02	30A	black	AWG 12	2.5/4 mm ²	single pole connector	100
80100-01	30A	white	AWG 12	2.5/4 mm ²	single pole connector	100
80100-03	30A	green	AWG 12	2.5/4 mm ²	single pole connector	100
80100-04	30A	blue	AWG 12	2.5/4 mm ²	single pole connector	100
MC75 (H) 81.4 x (W) 15.9 x (D) 15.9 mm						
80188-00	75A	red	AWG 6	16 mm ²	single pole connector	50
80188-02	75A	black	AWG 6	16 mm ²	single pole connector	50
80188-04	75A	white	AWG 6	16 mm ²	single pole connector	50
80188-06	75A	green	AWG 6	16 mm ²	single pole connector	50
80188-08	75A	blue	AWG 6	16 mm ²	single pole connector	50
MC120 (H) 117.5 x (W) 22.2 x (D) 22.2 mm						
80189-00	120A	red	AWG 2	35 mm ²	single pole connector	25
80189-01	120A	black	AWG 2	35 mm ²	single pole connector	25
80189-02	120A	white	AWG 2	35 mm ²	single pole connector	25
80189-03	120A	green	AWG 2	35 mm ²	single pole connector	25
80191-00	120A	blue	AWG 2	35 mm ²	single pole connector	25
MC180 (H) 139.7 x (W) 28.6 x (D) 28.6 mm						
80190-01	180A	red	AWG 0	50 mm ²	single pole connector	25
80190-02	180A	black	AWG 0	50 mm ²	single pole connector	25
80190-03	180A	white	AWG 0	50 mm ²	single pole connector	25
80190-04	180A	green	AWG 0	50 mm ²	single pole connector	25
80190-00	180A	blue	AWG 0	50 mm ²	single pole connector	25
Reduction bushings						
			from	to		
79840-00	reduction bushing		AWG 6	6 mm ²	cable reducing bushing	ea
79844-00	reduction bushing		AWG 2	16 mm ²	cable reducing bushing	ea
79846-00	reduction bushing		AWG 0	25 mm ²	cable reducing bushing	ea
79847-00	reduction bushing		AWG 0	35 mm ²	cable reducing bushing	ea

Recommended colour voltage coding:
 Red: 24V - blue: 48V - green: 72V

