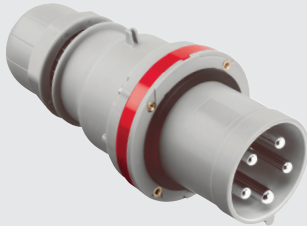
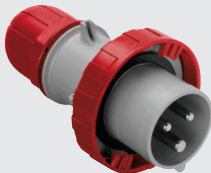




213.163...



213.633...



218.163...



218.1636...



313.324...



318.324...

**Optima series 16A - 32A - 63A - 125A**

- Insulation voltage: 690 VAC
- Standards: IEC 60309-2
- Material: Thermoplastic (*halogen free*)
- Impact resistance: IK08 (*1.7kg with a striking energy of 2J*)
- Operating temperature: -25 – +40°C (*max operating temperature +60°C*)
- Cable inlet: External cable stay with tulip clamping IP67 gland

**Voltage Coding**

■ 100 to 130V*
■ 200 to 250V
■ 380 to 480V
■ 480 to 525V

\* On request

type	rated current	(h) pos.	pin configuration	IP protection 44/54   66/7/9	description	cable outlet
------	---------------	----------	-------------------	------------------------------	-------------	--------------

**Male plugs (straight cable exit) 16 - 125A**

213.1633	16A	6h	■ 2P+E (3pin)	●	male ind. plug	straight
213.1636	16A	6h	■ 3P+E (4pin)	●	male ind. plug	straight
213.1637	16A	6h	■ 3P+N+E (5pin)	●	male ind. plug	straight
213.3233	32A	6h	■ 2P+E (3pin)	●	male ind. plug	straight
213.3236	32A	6h	■ 3P+E (4pin)	●	male ind. plug	straight
213.3237	32A	6h	■ 3P+N+E (5pin)	●	male ind. plug	straight
213.6333	63A	6h	■ 2P+E (3pin)	●	male ind. plug	straight
213.6336	63A	6h	■ 3P+E (4pin)	●	male ind. plug	straight
213.6337	63A	6h	■ 3P+N+E (5pin)	●	male ind. plug	straight
218.1633	16A	6h	■ 2P+E (3pin)	●	male ind. plug	straight
218.1636	16A	6h	■ 3P+E (4pin)	●	male ind. plug	straight
218.16366	16A	7h	■ 3P+E (4pin)	●	male ind. plug	straight
218.1637	16A	6h	■ 3P+N+E (5pin)	●	male ind. plug	straight
218.16376	16A	7h	■ 3P+N+E (5pin)	●	male ind. plug	straight
218.3233	32A	6h	■ 2P+E (3pin)	●	male ind. plug	straight
218.3236	32A	6h	■ 3P+E (4pin)	●	male ind. plug	straight
218.32364*	32A	3h	■ 3P+E (4pin)	●	male ind. plug	straight
218.32366	32A	7h	■ 3P+E (4pin)	●	male ind. plug	straight
218.3237	32A	6h	■ 3P+N+E (5pin)	●	male ind. plug	straight
218.32376	32A	7h	■ 3P+N+E (5pin)	●	male ind. plug	straight
218.6333	63A	6h	■ 2P+E (3pin)	●	male ind. plug	straight
218.6336	63A	6h	■ 3P+E (4pin)	●	male ind. plug	straight
218.63366	63A	7h	■ 3P+E (4pin)	●	male ind. plug	straight
218.6337	63A	6h	■ 3P+N+E (5pin)	●	male ind. plug	straight
218.63376	63A	7h	■ 3P+N+E (5pin)	●	male ind. plug	straight
218.12533	125A	6h	■ 2P+E (3pin)	●	male ind. plug	straight
218.12536	125A	6h	■ 3P+E (4pin)	●	male ind. plug	straight
218.125366	125A	7h	■ 3P+E (4pin)	●	male ind. plug	straight
218.12537	125A	6h	■ 3P+N+E (5pin)	●	male ind. plug	straight
218.125376	125A	7h	■ 3P+N+E (5pin)	●	male ind. plug	straight

**Connectors/couplers (female in-line socket)**

313.1643	16A	6h	■ 2P+E (3pin)	●	female connector	straight
313.1646	16A	6h	■ 3P+E (4pin)	●	female connector	straight
313.1647	16A	6h	■ 3P+N+E (5pin)	●	female connector	straight
313.3243	32A	6h	■ 2P+E (3pin)	●	female connector	straight
313.3246	32A	6h	■ 3P+E (4pin)	●	female connector	straight
313.3247	32A	6h	■ 3P+N+E (5pin)	●	female connector	straight
313.6343	63A	6h	■ 2P+E (3pin)	●	female connector	straight
313.6346	63A	6h	■ 3P+E (4pin)	●	female connector	straight
313.6347	63A	6h	■ 3P+N+E (5pin)	●	female connector	straight
318.1643	16A	6h	■ 2P+E (3pin)	●	female connector	straight
318.1646	16A	6h	■ 3P+E (4pin)	●	female connector	straight
318.16466	16A	7h	■ 3P+E (4pin)	●	female connector	straight
318.1647	16A	6h	■ 3P+N+E (5pin)	●	female connector	straight
318.16476	16A	7h	■ 3P+N+E (5pin)	●	female connector	straight
318.3243	32A	6h	■ 2P+E (3pin)	●	female connector	straight
318.3246	32A	6h	■ 3P+E (4pin)	●	female connector	straight
318.32464*	32A	3h	■ 3P+E (4pin)	●	female connector	straight
318.32466	32A	7h	■ 3P+E (4pin)	●	female connector	straight
318.3247	32A	6h	■ 3P+N+E (5pin)	●	female connector	straight
318.32476	32A	7h	■ 3P+N+E (5pin)	●	female connector	straight
318.6343	63A	6h	■ 2P+E (3pin)	●	female connector	straight
318.6346	63A	6h	■ 3P+E (4pin)	●	female connector	straight
318.63466	63A	7h	■ 3P+E (4pin)	●	female connector	straight
318.6347	63A	6h	■ 3P+N+E (5pin)	●	female connector	straight
318.63476	63A	7h	■ 3P+N+E (5pin)	●	female connector	straight

Continued overleaf....

\* Refrigerated container (Reefer plugs)