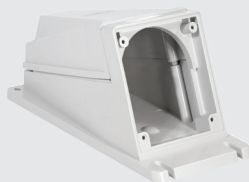




413.166...



418.636...



570.M0125



423.166...



428.166...

**Optima series - Panel mount sockets 16A - 32A - 63A - 125A**

- Insulation voltage: 690 VAC
- Operating temperature: -25 – +40°C (max operating temperature +60°C)
- Material: Thermoplastic (halogen free) / Impact resistance IK08

type	rated current	(h) pos.	pin configuration	IP protection 44/54   67/8/9	description	flange size
<b>Flush mount angled socket outlet (18°) 16A - 125A Standards: IEC 60309-2</b>						
413.1663	16A	6h	2P+E (3pin)	●	angled socket	70 x 87
413.1666	16A	6h	3P+E (4pin)	●	angled socket	70 x 87
413.1667	16A	6h	3P+N+E (5pin)	●	angled socket	70 x 87
413.3263	32A	6h	2P+E (3pin)	●	angled socket	84 x 106
413.3266	32A	6h	3P+E (4pin)	●	angled socket	84 x 106
413.3267	32A	6h	3P+N+E (5pin)	●	angled socket	84 x 106
413.6363	63A	6h	2P+E (3pin)	●	angled socket	100 x 110
413.6366	63A	6h	3P+E (4pin)	●	angled socket	100 x 110
413.6367	63A	6h	3P+N+E (5pin)	●	angled socket	100 x 110
418.1663	16A	6h	2P+E (3pin)	●	angled socket	70 x 87
418.1666	16A	6h	3P+E (4pin)	●	angled socket	70 x 87
418.16666	16A	7h	3P+E (4pin)	●	angled socket	70 x 87
418.1667	16A	6h	3P+N+E (5pin)	●	angled socket	70 x 87
418.16676	16A	7h	3P+N+E (5pin)	●	angled socket	70 x 87
418.3263	32A	6h	2P+E (3pin)	●	angled socket	84 x 106
418.3266	32A	6h	3P+E (4pin)	●	angled socket	84 x 106
418.32664*	32A	3h	3P+E (4pin)	●	angled socket	84 x 106
418.32666	32A	7h	3P+E (4pin)	●	angled socket	84 x 106
418.3267	32A	6h	3P+N+E (5pin)	●	angled socket	84 x 106
418.32676	32A	7h	3P+N+E (5pin)	●	angled socket	84 x 106
418.6363	63A	6h	2P+E (3pin)	●	angled socket	100 x 110
418.6366	63A	6h	3P+E (4pin)	●	angled socket	100 x 110
418.63666	63A	7h	3P+E (4pin)	●	angled socket	100 x 110
418.6367	63A	6h	3P+N+E (5pin)	●	angled socket	100 x 110
418.63676	63A	7h	3P+N+E (5pin)	●	angled socket	100 x 110
418.12563	125A	6h	2P+E (3pin)	●	angled socket	114 x 114
418.12566	125A	6h	3P+E (4pin)	●	angled socket	114 x 114
418.125666	125A	7h	3P+E (4pin)	●	angled socket	114 x 114
418.12567	125A	6h	3P+N+E (5pin)	●	angled socket	114 x 114
418.125676	125A	7h	3P+N+E (5pin)	●	angled socket	114 x 114
<b>Micro-switch - for plug inserted indication of above angled outlet sockets only</b>						
654.0391	16/32A		1x NO		micro-switch for above angled sockets	-
654.0392	16/32A		1x NC		micro-switch for above angled sockets	-
654.0393	63/125A		1x NO		micro-switch for above angled sockets	-
654.0394	63/125A		1x NC		micro-switch for above angled sockets	-
<b>Housings to surface mount (above) angled sockets</b>						
570.0116	16A		angled housing	●	for p/mnt sockets	70 x 87
570.0016	16A		straight housing	●	for p/mnt sockets	70 x 87
570.0132	32A		angled housing	●	for p/mnt sockets	84 x 106
570.0032	32A		straight housing	●	for p/mnt sockets	84 x 106
570.M0163	63A		angled housing	●	for p/mnt sockets	100 x 110
570.M0125	125A		angled housing	●	for p/mnt sockets	114 x 114
<b>Flush mount straight socket outlet 16A - 125A Standards: IEC 60309-2</b>						
423.1663	16A	6h	2P+E (3pin)	●	straight socket	75 x 75
423.1663/R	16A	6h	2P+E (3pin)	●	straight socket	62 x 62
423.1666	16A	6h	3P+E (4pin)	●	straight socket	75 x 75
423.1666/R	16A	6h	3P+E (4pin)	●	straight socket	62 x 62
423.1667	16A	6h	3P+N+E (5pin)	●	straight socket	75 x 75
423.3263	32A	6h	2P+E (3pin)	●	straight socket	75 x 75
423.3266	32A	6h	3P+E (4pin)	●	straight socket	75 x 75
423.3267	32A	6h	3P+N+E (5pin)	●	straight socket	75 x 75
423.6363	63A	6h	2P+E (3pin)	●	straight socket	100 x 110
423.6366	63A	6h	3P+E (4pin)	●	straight socket	100 x 110
423.6367	63A	6h	3P+N+E (5pin)	●	straight socket	100 x 110
428.1663	16A	6h	2P+E (3pin)	●	straight socket	75 x 75
428.1666	16A	6h	3P+E (4pin)	●	straight socket	75 x 75
428.1667	16A	6h	3P+N+E (5pin)	●	straight socket	75 x 75
428.3263	32A	6h	2P+E (3pin)	●	straight socket	75 x 75
428.3266	32A	6h	3P+E (4pin)	●	straight socket	75 x 75
428.32664*	32A	3h	3P+E (4pin)	●	straight socket	75 x 75
428.3267	32A	6h	3P+N+E (5pin)	●	straight socket	75 x 75

Continued overleaf....

\* Refrigerated container (Reefer plugs)