



CD241J



CD464J



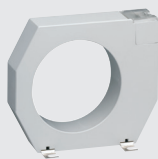
HR500



HR520



HR700



HR743

**Residual current devices (RCDs) without overload protection**

Compact device provides earth leakage protection (against electrical shocks by direct or indirect contact) to open automatically in the event of an earth fault between phase and earth and/or neutral and earth. Hager earth leakage devices are protected against nuisance tripping caused by transient leakage currents.

**Field fittable accessories** (see page B-7)

- shunt trip device
  - undervoltage release
- } Requires CZ001 interface auxiliary

**Nominal voltage:** (2 pole) 240V 50Hz  
(4 pole) 400V 50Hz  
**Mechanical life:** 40.000 operations

type	overload rating (A)	sensitivity (mA)	poles	description	width in 17.5 mm
------	---------------------	------------------	-------	-------------	------------------

**Earth leakage units (RCDs) (Type AC)**

**30mA sensitivity**

CD226J	25A	30 mA	2 pole	earth leakage device	2
CD241J	40A	30 mA	2 pole	earth leakage device	2
CD264J	63A	30 mA	2 pole	earth leakage device	2
CD285Z	100A	30 mA	2 pole	earth leakage device	2
CD464J	63A	30 mA	4 pole	earth leakage device	4
CD485Z	100A	30 mA	4 pole	earth leakage device	4

**100/300mA sensitivity (selective type)**

CE264J	63A	100 mA	2 pole	earth leakage device	2
CF264J	63A	300 mA	2 pole	earth leakage device	2
CF285Z	100A	300 mA	2 pole	earth leakage device	4
CF464J	63A	300 mA	4 pole	earth leakage device	4
CF485Z	100A	300 mA	4 pole	earth leakage device	4

**Auxiliaries for RCDs**

CZ001	1NO + 1NC		auxiliary + alarm contact for above RCDs		2
-------	-----------	--	--	--	---

**Industrial electronic earth leakage relay (with separate torroid)**

- Incorporating "test" and "reset" buttons and LED indication

**Fixed sensitivity, instantaneous trip**

HR500	230V	30 mA	4 pole	entry level e/leakage relay	1
HR502	230V	300 mA	4 pole	entry level e/leakage relay	1

**Adjustable sensitivity and trip delay**

- Selectable In threshold: 0.03/0.1/0.3/0.4/0.5/1/3/10A (30mA - 10A)
- Selectable trip delay: 0/0.1/0.3/0.4/0.5/1/3sec (0-3sec)

HR510	230V	selectable	4 pole	earth leakage relay	3
HR520	as above with fault current indication and 50% pre-alarm output				3

**Separate torroid sensors for electronic earth leakages**

type	hole	diameter Ø (mm)		description	mount
------	------	-----------------	--	-------------	-------

HR700	round	30 mm	-	standard torroidal t/former	DIN rail
HR742	round	70 mm	-	standard torroidal t/former	chassis
HR743	round	105 mm	-	standard torroidal t/former	chassis
HR745	round	210 mm	-	standard torroidal t/former	chassis
HR830	rectangular	70 x 175	-	standard torroidal t/former	chassis