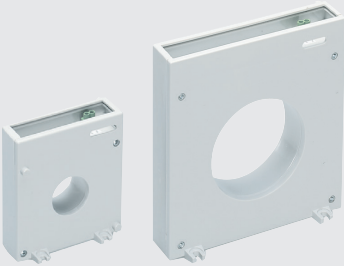




R4D 415



RT...



RC80 415

Industrial electronic earth leakage relays

- LED indication (Green – Power "ON") (Red – TRIP)
- Front "TEST" and "RESET" buttons
- Configurable automatic or manual reset
- Configurable tripping set-point ($I_{\Delta n}$): 0.025 - 0.25A / 0.25 - 2.5A / 2.5 - 25A
- Configurable tripping time delay (t): 0.02 - 0.5s / 0.2 - 5s
- Reference standards: IEC/EN 60947-2

type	supply voltage	relays	description
------	----------------	--------	-------------

Panel mount earth leakage relays - (96 x 96 mm)

Require toroidal current transformers (*listed below*)

R1D 1 operational threshold

R1D 415 110 - 240 - 415V 1 earth leakage 1 operational threshold

R2D 2 operational thresholds (*configurable for 2 tripping or 1 + alarm*)

R2D 415 110 - 240 - 415V 2 earth leakage 2 operational threshold

R4D 2 operational thresholds (*configurable for 2 tripping or 1 + alarm*)

- Flag indicator "trip memory"
- Digital fault current measurement and display with configurable tripping value

R4D 415 110 - 240 - 415V 2 earth leakage 2 operational threshold

Toroidal current transformers for above earth leakage relays

type	supply voltage	hole size	description
------	----------------	-----------	-------------

RT60	toroid	60 mm	toroidal transformer for above relays
RT80	toroid	80 mm	toroidal transformer for above relays
RT110	toroid	110 mm	toroidal transformer for above relays
RT210	toroid	210 mm	toroidal transformer for above relays
RTA110	toroid	110 mm	split-core toroidal transformers
RTA210	toroid	210 mm	split-core toroidal transformers

Earth leakage relay incorporating toroidal transformer

RC60 48	24 - 48 VAC/DC	60 mm	earth leakage and toroidal combinations
RC60 415	110 - 240 - 415V	60 mm	earth leakage and toroidal combinations
RC80 415	110 - 240 - 415V	80 mm	earth leakage and toroidal combinations
RC110 415	110-240-415V	110 mm	earth leakage and toroidal combinations