



10102369



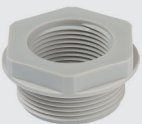
10060802



10101862



10063573



10063582



10063664

**Venting** (pressure equalization for sealed enclosures) *Polyamide*

Vent plugs/glands incorporate an internal membrane, designed to release pressure in enclosures caused by differing internal temperatures to the outside ambient, without compromising the IP rating of the enclosure.

- Waterproof and dustproof level: IP68, IP69K
- UV resistant: Type A, ISO 4892-2, UL-file QCRV2.E179850
- Long service life in extreme environments
- Reduces fogging and internal condensation, improves heat emission efficiency in sealed enclosures

type	model	thread Ø	colour	description	compress area (mm)	dimensions (mm) (TL) (L) (SW)		
------	-------	-------------	--------	-------------	-----------------------	----------------------------------	--	--

**VentPLUG** (stopper and pressure equalisation element in one)

<b>10102369</b>	EVPS 12	M12	■ grey	vent plug	–	17.4	9	16
-----------------	---------	-----	--------	-----------	---	------	---	----

**VentGLAND** (compression gland and pressure equalisation element in one)

<b>10060974</b>	ESVG 20	M20	■ grey	vent gland	6 - 13	41-50	10	24
<b>10100666</b>	ESVG 25	M25	■ grey	vent gland	9 - 17	45-54	10	29
<b>10100801</b>	ESVG 32	M32	■ grey	vent gland	13 - 21	49-58	12	36
<b>10060802</b>	ESVG 20	M20	■ black	vent gland	6 - 13	41-50	10	24
<b>10100667</b>	ESVG 25	M25	■ black	vent gland	9 - 17	45-54	10	29
<b>10100802</b>	ESVG 32	M32	■ black	vent gland	13 - 21	49-58	12	36

**CLIXX - Membrane cable entry with strain relief**

- Reliable sealing: IP66 and IP67 to EN 60 529 weather proof, UV resistant
- Space-saving: Flat design, minimal space requirement
- Easiest assembly: External mounting from one side only - no thread, no tools, no locknuts
- Incorporated: Strain relief to EN 50 262 Type A
- Time-saving: Simple one-hand-only assembly reduces installation time by 80%
- For wall thickness: 0.8 - 3.5 mm
- Economically priced: Can also be used as a sealing plug
- Material: Polypropylene / Thermoplastic elastomere -40°C to 65°C

<b>10101861</b>	CLIXX 16	M16	4 - 10	membrane cable entry with strain relief	<b>0</b>
<b>10101359</b>	CLIXX 20	M20	6 - 13	membrane cable entry with strain relief	<b>0</b>
<b>10101862</b>	CLIXX 25	M25	9 - 17	membrane cable entry with strain relief	<b>0</b>

**Adaptors (Plastic)**

- Temperature range: -40°C to 100°C
- Material: Polyamide, reinforced glass fibre

type	model	from male	to female	description	TL (mm)
------	-------	--------------	--------------	-------------	---------

**Enlargement adaptors**

**metric - metric**

<b>10063570</b>	KEM 12/16	M12	M16	enlarge adaptor	27
<b>10063571</b>	KEM 16/20	M16	M20	enlarge adaptor	27
<b>10063572</b>	KEM 20/25	M20	M25	enlarge adaptor	27
<b>10063573</b>	KEM 25/32	M25	M32	enlarge adaptor	28
<b>10063574</b>	KEM 32/40	M32	M40	enlarge adaptor	30
<b>10063575</b>	KEM 40/50	M40	M50	enlarge adaptor	30

**Reduction adaptors**

**metric - metric**

<b>10063577</b>	KRM 16/12	M16	M12	reduction adaptor	16
<b>10063579</b>	KRM 20/16	M20	M16	reduction adaptor	17
<b>10063582</b>	KRM 25/20	M25	M20	reduction adaptor	17
<b>10063584</b>	KRM 32/20	M32	M20	reduction adaptor	19
<b>10063585</b>	KRM 32/25	M32	M25	reduction adaptor	19
<b>10063588</b>	KRM 40/32	M40	M32	reduction adaptor	19
<b>10063591</b>	KRM 50/40	M50	M40	reduction adaptor	21

**PG - metric adaptors**

<b>10063650</b>	APM 7/12	PG 7	M12	metric - PG adaptor	27
<b>10063653</b>	APM 9/16	PG 9	M16	metric - PG adaptor	27
<b>10063655</b>	APM 11/16	PG 11	M16	metric - PG adaptor	27
<b>10063659</b>	APM 13.5/20	PG 13.5	M20	metric - PG adaptor	28
<b>10063661</b>	APM 16/20	PG 16	M20	metric - PG adaptor	28
<b>10063662</b>	APM 16/25	PG 16	M25	metric - PG adaptor	28
<b>10063664</b>	APM 21/25	PG 21	M25	metric - PG adaptor	30
<b>10063667</b>	APM 29/32	PG 29	M32	metric - PG adaptor	19
<b>10063670</b>	APM 36/40	PG 36	M40	metric - PG adaptor	21
<b>10063673</b>	APM 42/40	PG 42	M40	metric - PG adaptor	21