

Wiska **SPRINT** cable glands provide ultimate protection from environmental conditions

Suitable for extreme outdoor installations. -40 - +100°C

- Protection: **IP68** to EN 60520 / **IP69K** to DIN 40 050-T9
- UV resistant: Type A, ISO 4892-2, UL-file QCRV2.E179850
- Flame protection: Glow wire test 750° acc.to EN60695-2-11
- Self-locking cap nut thread offering vibration protection
- Increased wall thickness for greater stability
- Smooth internal channel preventing cable jam on insertion
- Claw shape provides large sealing area and excellent adaptation to irregular cable profiles
- Material: Gland - Polyamide  
 Gasket - EPDM (*highly resistant to chemicals, environment and ultraviolet*)

**Metric cable glands** *grey (or) black*

type	thread diameter	compress area (mm)	description	dimensions (mm)		
				(TL)	(L)	(SW)

**ESKV light grey RAL 7035** • Locknut to be ordered separately

<b>10066410</b>	M12 X 1.5	3 - 7	compression gland ( <i>grey</i> )	29 - 43	9	16
<b>10066411</b>	M16 X 1.5	4.5 - 10	compression gland ( <i>grey</i> )	31 - 37	9	20
<b>10066412</b>	M20 X 1.5	6 - 13	compression gland ( <i>grey</i> )	36 - 45	10	24
<b>10066413</b>	M25 X 1.5	9 - 17	compression gland ( <i>grey</i> )	38 - 47	10	29
<b>10066414</b>	M32 X 1.5	13 - 21	compression gland ( <i>grey</i> )	42 - 51	12	36
<b>10066415</b>	M40 X 1.5	16 - 28	compression gland ( <i>grey</i> )	52 - 65	12	46
<b>10066416</b>	M50 X 1.5	21 - 35	compression gland ( <i>grey</i> )	59 - 72	14	55
<b>10066417</b>	M63 X 1.5	34 - 48	compression gland ( <i>grey</i> )	64 - 78	15	68

**EMUG locknuts for above** Material: *Light grey Polyamide/glassfibre reinforced*

<b>10060770</b>	M12 x 1.5	-	gland locknut ( <i>grey</i> )	-	-	18
<b>10060771</b>	M16 x 1.5	-	gland locknut ( <i>grey</i> )	-	-	22
<b>10060772</b>	M20 x 1.5	-	gland locknut ( <i>grey</i> )	-	-	27
<b>10060773</b>	M25 x 1.5	-	gland locknut ( <i>grey</i> )	-	-	32
<b>10060774</b>	M32 x 1.5	-	gland locknut ( <i>grey</i> )	-	-	40
<b>10060775</b>	M40 x 1.5	-	gland locknut ( <i>grey</i> )	-	-	50
<b>10060776</b>	M50 x 1.5	-	gland locknut ( <i>grey</i> )	-	-	60
<b>10060777</b>	M63 x 1.5	-	gland locknut ( <i>grey</i> )	-	-	75

**ESKV black RAL 9005** • Locknut to be ordered separately

<b>10066120</b>	M12 x 1.5	3 - 7	compression gland ( <i>black</i> )	29 - 43	9	16
<b>10066121</b>	M16 x 1.5	4.5 - 10	compression gland ( <i>black</i> )	31 - 37	9	20
<b>10066122</b>	M20 x 1.5	6 - 13	compression gland ( <i>black</i> )	36 - 45	10	24
<b>10066123</b>	M25 x 1.5	9 - 17	compression gland ( <i>black</i> )	38 - 47	10	29
<b>10066124</b>	M32 x 1.5	13 - 21	compression gland ( <i>black</i> )	42 - 51	12	36
<b>10066125</b>	M40 x 1.5	16 - 28	compression gland ( <i>black</i> )	52 - 65	12	46
<b>10066126</b>	M50 x 1.5	21 - 35	compression gland ( <i>black</i> )	59 - 72	14	55
<b>10066127</b>	M63 x 1.5	34 - 48	compression gland ( <i>black</i> )	64 - 78	15	68

**EMUG locknuts for above** Material: *Black polyamide/glassfibre reinforced*

<b>10061780</b>	M12 x 1.5	-	gland locknut ( <i>black</i> )	-	-	18
<b>10061781</b>	M16 x 1.5	-	gland locknut ( <i>black</i> )	-	-	22
<b>10061782</b>	M20 x 1.5	-	gland locknut ( <i>black</i> )	-	-	27
<b>10061783</b>	M25 x 1.5	-	gland locknut ( <i>black</i> )	-	-	32
<b>10061784</b>	M32 x 1.5	-	gland locknut ( <i>black</i> )	-	-	40
<b>10061785</b>	M40 x 1.5	-	gland locknut ( <i>black</i> )	-	-	50
<b>10061786</b>	M50 x 1.5	-	gland locknut ( <i>black</i> )	-	-	60
<b>10061787</b>	M63 x 1.5	-	gland locknut ( <i>black</i> )	-	-	75

**EMSKV Metal cable glands** • Locknut to be ordered separately

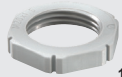
• Material:		Cable gland: Nickle-plated brass		polyamide		
<b>10065000</b>	M12 x 1.5	3 - 7	metal compression gland	23 - 30	5	16
<b>10065001</b>	M16 x 1.5	4.5 - 10	metal compression gland	26 - 34	5	20
<b>10065002</b>	M20 x 1.5	6 - 13	metal compression gland	29 - 37	6	24
<b>10065003</b>	M25 x 1.5	9 - 17	metal compression gland	33 - 42	7	29
<b>10065004</b>	M32 x 1.5	13 - 21	metal compression gland	36 - 44	8	36
<b>10065005</b>	M40 x 1.5	16 - 28	metal compression gland	44 - 55	8	46
<b>10065006</b>	M50 x 1.5	21 - 35	metal compression gland	51 - 62	9	55
<b>10065007</b>	M63 x 1.5	34 - 48	metal compression gland	56 - 67	10	68

**EMMU locknuts for above** Material: *Nickle-plated brass*

<b>10063141</b>	M12 x 1.5	-	metal gland locknut	-	-	15
<b>10063142</b>	M16 x 1.5	-	metal gland locknut	-	-	19
<b>10063143</b>	M20 x 1.5	-	metal gland locknut	-	-	24
<b>10063144</b>	M25 x 1.5	-	metal gland locknut	-	-	30
<b>10063145</b>	M32 x 1.5	-	metal gland locknut	-	-	36
<b>10063146</b>	M40 x 1.5	-	metal gland locknut	-	-	46
<b>10063147</b>	M50 x 1.5	-	metal gland locknut	-	-	60
<b>10063148</b>	M63 x 1.5	-	metal gland locknut	-	-	70



10066413



10060773



10066123



10061783



10065003



10063144