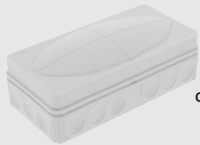
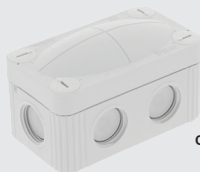


new



COMBI 116



COMBI 206



COMBI 308



COMBI 407



10062...



10064...

Junction boxes (IP66/67)

Wiska COMBI junction boxes provide ultimate protection from environmental conditions in a compact, very attractive format, suitable for extreme outdoor installations.

- **Weather proof - ultraviolet resistant - shatterproof - impact resistant - flame retardant - halogen free**
- **Mounting:** Holes located outside the sealing area but within the lid
- **Material:** Polypropylene, reinforced glass fiber, sealing: thermoplastic elastomer
- **Colour:** RAL 7035 (light grey) or RAL 9005 (black)

type	cable entry		thread Ø	colour	description	dimensions (mm)		
	sides	rear				(H)	(W)	(D)

Push-on lid/cover IP66 Push-on lid/cover - for easy access to internal wiring

- Cable entry: Elastic self-sealing puncture-membranes for cable entry on sides and in the base

type	cable entry sides	cable entry rear	thread Ø	colour	description	(H)	(W)	(D)
COMBI 108			IP66		<i>(push-on lid/cover)</i>			
10060522	10	2	–	■ grey	weatherproof junction box	76	76	51
COMBI 116			IP66		<i>(push-on lid/cover)</i>			
10109563	18	4	–	■ grey	weatherproof junction box	152	76	51

Screw-on lid/cover IP66 - IP67 (when used with cable gland)

- Captive rust free quick release (1/4 turn) lid screws of plastic
- Patented combination of: a) - Integrated thread for Metric cable gland entry without locknuts
 b) - Elastic self-sealing puncture-membrane for cable entry on the sides

type	cable entry sides	cable entry rear	thread	colour	description	(H)	(W)	(D)
COMBI 206			IP66/67		<i>(captive - quick release lid screws)</i>			
10109569	6	2	M20	■ grey	weatherproof junction box	85	49	51
COMBI 308			IP66/67		<i>(captive - quick release lid screws)</i>			
10060400	8	–	M20	■ grey	weatherproof junction box	85	85	51
10060581	8	–	M20	■ black	weatherproof junction box	85	85	51
COMBI 407			IP66/67		<i>1 x M20 cable entry can be knocked-out for M25 entry</i>			
10105595	7	2	M20	■ grey	weatherproof junction box	95	95	60
10105601	7	2	M20	■ black	weatherproof junction box	95	95	60
COMBI 607			IP66/67		<i>M20 cable entries can also be knocked-out for M25 entries</i>			
10060531	7	3	M25	■ grey	weatherproof junction box	110	110	66
10060648	7	3	M25	■ black	weatherproof junction box	110	110	66
COMBI 1210			IP66/67		<i>(captive - quick release lid screws)</i>			
10101459	10	4	M20	■ grey	weatherproof junction box	160	140	81
10101460	10	4	M20	■ black	weatherproof junction box	160	140	81

Accessories for above junction boxes

10109800	ZER 4-12	strain relief ring for securing cable internally	(10 pcs)
22001132	SP-HKT 11/5	5 pole internal mounting terminal for COMBI 108/116/206/308/407	
22000407	SP-HKT607	5 pole internal mounting terminal for COMBI COMBI 607	
10108836		external mounting feet for COMBI 308/407/607/1210	

SPRINT cable glands

SPRINT cable glands can be further enhanced to be applied for diverse applications by the introduction of various special inserts for blind, reduced cable diameters, multiple cable sealing.

type	model	for gland	compress area (mm)	description	TL (mm)
------	-------	-----------	--------------------	-------------	---------

Reduction sealing inserts for reduced cable diameters with existing gland

10062183	RDE 12	M12	1 - 3	gland reduction sealing inserts	–
10062184	RDE 16	M16	2 - 6	gland reduction sealing inserts	–
10062185	RDE 20	M20	4 - 8	gland reduction sealing inserts	–
10060768	RDE 25	M25	7 - 12	gland reduction sealing inserts	–
10062186	RDE 32	M32	9 - 14	gland reduction sealing inserts	–
10062187	RDE 40	M40	12 - 20	gland reduction sealing inserts	–

Blind plugs for glands for seal tight of unused cable inlets or multiple sealing inserts

10064000	BS 2	2 mm		gland blind plugs	12
10064002	BS 4	4 mm		gland blind plugs	12
10064004	BS 6	6 mm		gland blind plugs	16
10064005	BS 7	7 mm		gland blind plugs	16
10064008	BS 10	10 mm		gland blind plugs	16
10064010	BS 13	13 mm		gland blind plugs	22
10064012	BS 17	17 mm		gland blind plugs	22
10064014	BS 21	21 mm		gland blind plugs	22