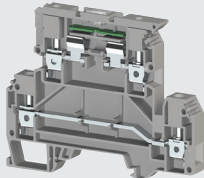
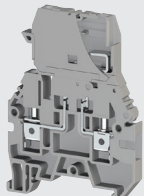


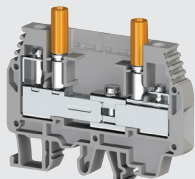
355619



355229



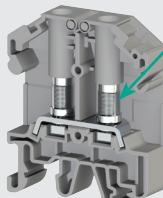
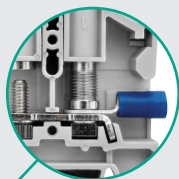
355109



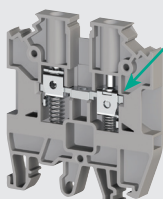
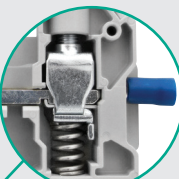
375692



476302



308009



304500

**AVK series - Screw clamp terminals**

type	wire size (mm <sup>2</sup> )	amperage EN60947-7-1	terminal width	description	
------	------------------------------	----------------------	----------------	-------------	--

**Fuse terminals (ASK) - for 5 x 20 mm fuses**

**Low profile fused terminal - for 5 x 20 mm fuses**

351109	6 mm	6.3A	8 mm	low profile fused terminal	–
351229	6 mm	6.3A	8 mm	fused term. LED indication	24V DC
351619	6 mm	6.3A	8 mm	fused term. LED indication	220V AC
450049	end plate	–	1.5 mm	for above 351 ... fused terminals	

**Fused terminal with pluggable fuse section (supports spare fuse)**

355109*	4 mm	10A	6.2 mm	plug-in fuse terminal	–
355229*	4 mm	10A	6.2 mm	fused term. LED indication	24V DC
355619*	4 mm	10A	6.2 mm	fused term. LED indication	220V AC
450059	end plate	–	1.5 mm	for above 355 ... fused terminals	

**Two tier 1 x fused and 1 x through terminal (AVK) (supports spare fuse)**

353309*	4 mm	6.3A	8 mm	two tier (one fused)	
353329*	4 mm	6.3A	8 mm	fused term. LED indication	24V DC
450209	end plate	–	1.5 mm	for above 353 ... fused terminals	

\* 353/355--- terminals accept plug-in bridge pieces (2/3/4/10 way) (see page L-8)

**Special application terminals**

**WGO test / disconnect terminals**

Used to perform required tests without disconnecting the system. Usually installed on secondary side of current transformers, permitting observation of testing equipment safe exchange of meters by bridging secondary side of transformer during exchange

375690	6 mm	41A	8 mm	terminal without test socket	
375691	6 mm	41A	8 mm	terminal with test socket	
375692	6 mm	41A	8 mm	terminal with double test socket	
476302	2 pole			sliding bridge/cross connector	for above test terminals
476303	3 pole			sliding bridge/cross connector	for above test terminals
476304	4 pole			sliding bridge/cross connector	for above test terminals
450229	end plate	–		for above test terminals	375690/1/2

**2PB6/NM - Terminal block with screw bolt connection (accommodates ring lugs)**

Standard through terminal with threaded stud termination, incorporating a hinged section nut to accommodate a ring lug, provides a secure, safe connection preventing cable from disconnection in the event of loosened screw.

- Universal screw bolt - ring lug connection system (M4)
- Hinged terminal cover for easy access for ring lugs

**PB6/NM - Terminal with stud connection to accept ring lugs**

308009	0.5...6	41A		11 mm bolt connection terminal block	
451019	end plate	–		for above bolt connection terminal	308009

**AVK Y series - Spring supported screw connection terminal block**

Special application terminal with spring supported screw connection for use with hook blade terminals the spring provides a secure, safe connection, simultaneously preventing hook blade lug from exiting the terminal even in the event of a loosened connection.

304500	0.2...6	32A	6 mm	spring assisted terminal block	
304510	0.5...10	41A	8 mm	spring assisted terminal block	
304520	0.5...16	57A	10 mm	spring assisted terminal block	
450300	end plate	–		for above spring assisted terminal	304500/10
450260	end plate	–		for above spring assisted terminal	304520

Terminal accessories, see page L-8

DIN mounting rail, see page L-13