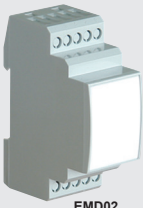
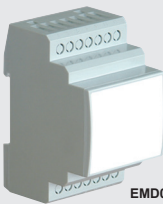




EX11 + EX08



EMD02



EMD03

11 pin - Plug-in black plastic housings (for electronic components)

type	dimensions	description
------	------------	-------------

11 pin - Plug-in black plastic housings (for electronic components)

EX01		metal retaining clip for plug-in devices
EX02		panel mount adaptor
EX11	(H) 80 x (W) 35 x (D) 79	11 pin empty housing complete (black) 31.20
EX08	front label	blank adhesive label for front of housing
EX06B	black knob	potentiometer knob for above housing
EX06G	grey knob	potentiometer knob for above housing

Modular housings (grey) 6.3 mm terminal centre spacing

• Lines up with standard DIN MCBs and modular devices (2 or 3 modules wide)

EMD02	(H) 92 x (W) 35.5 x (D) 64	2 module complete housing Din rail mount
EMD03	(H) 92 x (W) 53.3 x (D) 64	3 module complete housing Din rail mount
EMX02	front label	blank adhesive front label for EMD02 (2 modular) housing
EMX03	front label	blank adhesive front label for EMD03 (3 modular) housing
EMX04	adj. knob	screw adjustable knob for internal potentiometer